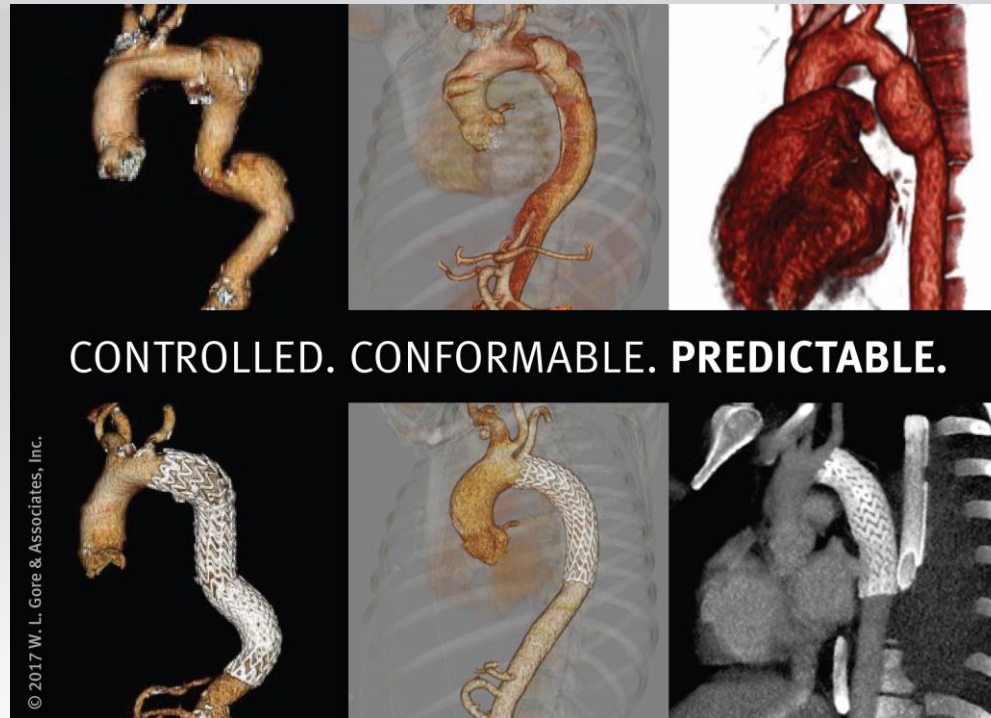


# Introducing the GORE® TAG® Conformable Thoracic Stent Graft with ACTIVE CONTROL System



K. Oikonomou  
Department of Vascular Surgery  
Regensburg University

Products listed may not be available in all markets.

GORE®, TAG®, and designs are trademarks of W. L. Gore & Associates. © 2017 W. L. Gore & Associates, Inc.



# Disclosures

- W.L. Gore & Associates
  - Sponsored Presentation

Products listed may not be available in all markets.

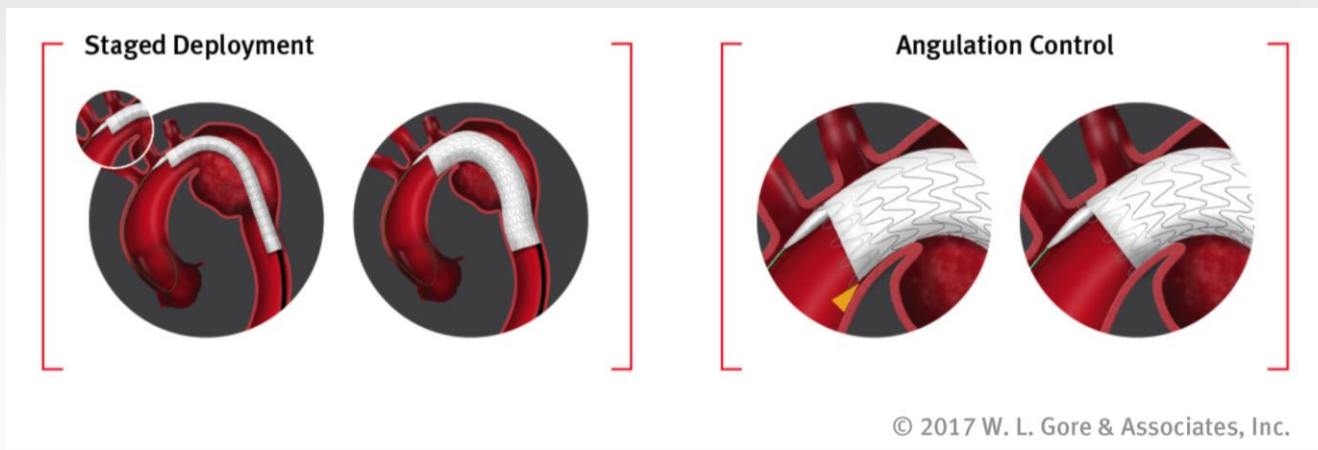
GORE®, TAG®, and designs are trademarks of W. L. Gore & Associates. © 2017 W. L. Gore & Associates, Inc.



# Where *Conformability* Meets Control

## GORE® TAG® Conformable Thoracic Stent Graft with ACTIVE CONTROL System

- Conformability of the Conformable GORE® TAG® Device with an enhanced deployment system
- Improved deployment accuracy and control



Products listed may not be available in all markets.

GORE®, TAG®, and designs are trademarks of W. L. Gore & Associates. © 2017 W. L. Gore & Associates, Inc.



# GORE® ACTIVE CONTROL System

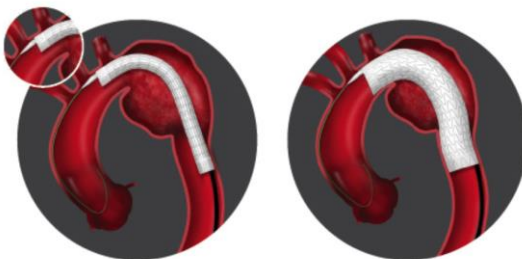
## Active positioning of the stent graft for optimal seal

Staged deployment enables adjustment of placement, angulation,

Continuous blood flow

- Ensures hemodynamic stability
- Opportunity to visualize and refine
  - C-arm parallax correction
  - Device placement

Staged Deployment

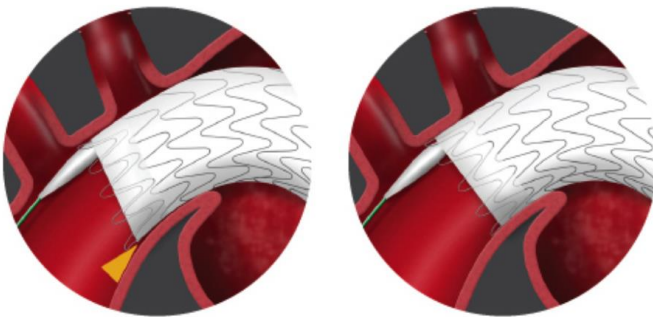


# Optional steps to optimize positioning

## Optional angulation control available during intermediate and / or full diameter stages

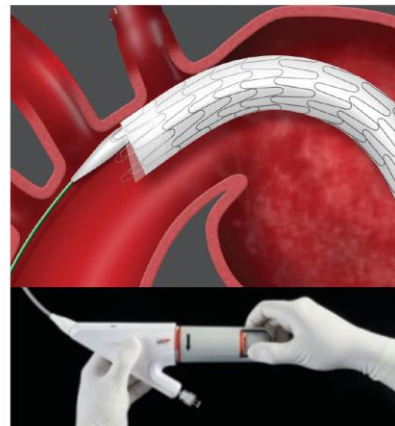
- Refines orthogonal placement of the proximal end of the device
- Improve apposition
- Seal along inner aortic curve

Angulation Control



© 2017 W. L. Gore & Associates, Inc.

Angulation control at intermediate diameter



Angulation control at full diameter



© 2017 W. L. Gore & Associates, Inc.



Products listed may not be available in all markets.

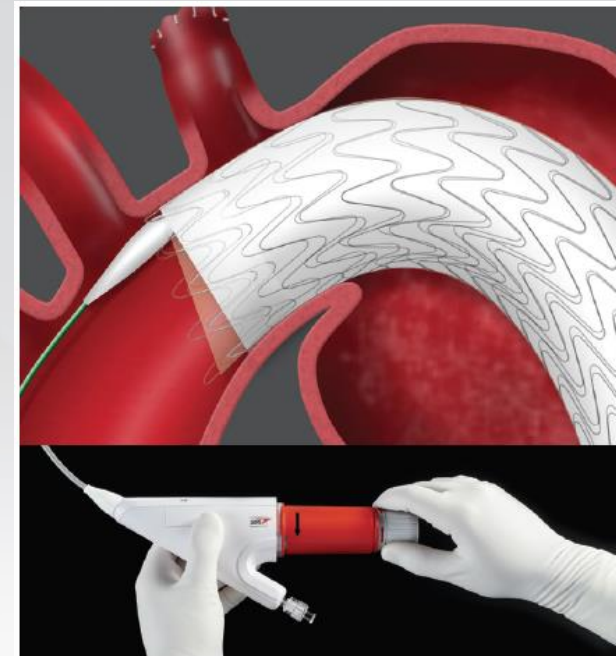
GORE®, TAG®, and designs are trademarks of W. L. Gore & Associates. © 2017 W. L. Gore & Associates, Inc.

CONFORMABLE  
THORACIC STENT GRAFT

# Device Design Impacts Clinical Outcomes

## Angulation Control mechanism designed to enhance innate conformability

- Single sinusoidal stent wire design provides exceptional flexibility
- Improved deployment
- The device adapts to natural anatomy (not vice versa)



Angulation control at full diameter

© 2017 W. L. Gore & Associates, Inc.

# Product Animation



Products listed may not be available in all markets.  
GORE®, TAG®, and designs are trademarks of W. L. Gore & Associates. © 2017 W. L. Gore & Associates, Inc.



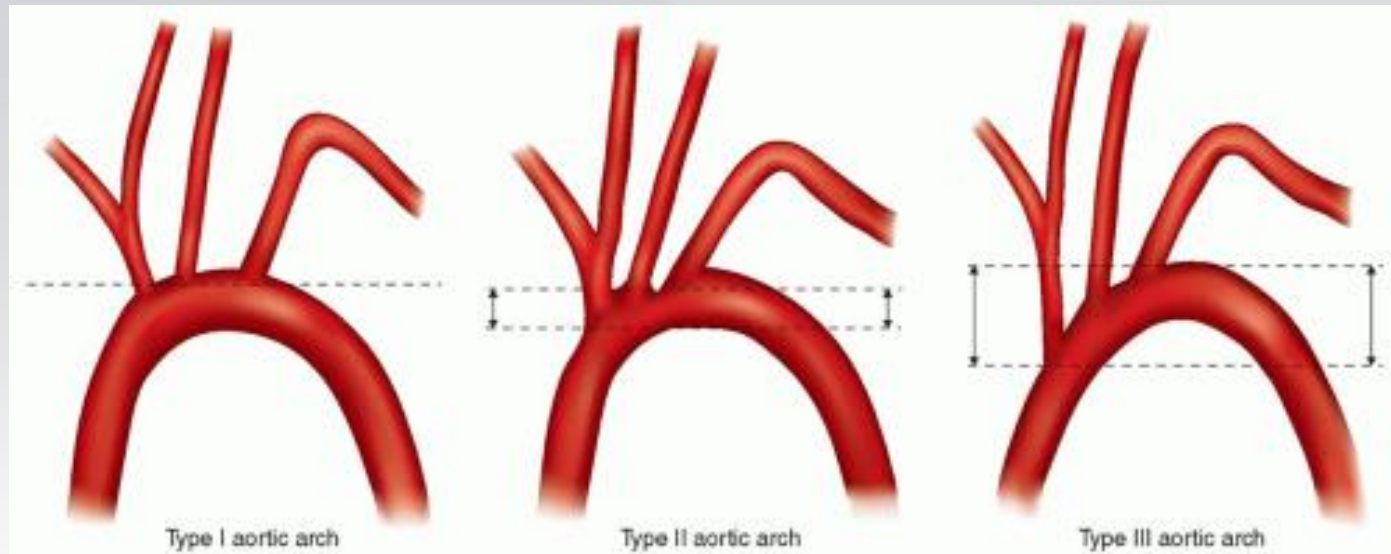
# Clinical Experience in Regensburg

## 11/2017 – 05/2018

- 23 Patients
  - 10 Complicated Type B dissections (malperfusion, progression, pleural effusion, refractory hypertension/pain)
  - 2 Ruptured Type B dissections
  - 4 Thoracic aneurysms
  - 1 Traumatic dissection
  - 1 Arch aneurysm (adjunct to NEXUS arch device)
  - 3 Type A dissections (simultaneous with ascending repair)
  - 2 Infrarenal PAUs

# Clinical Experience in Regensburg 11/2017 – 05/2018

- 21 Patients with proximal landing in aortic arch



N=3

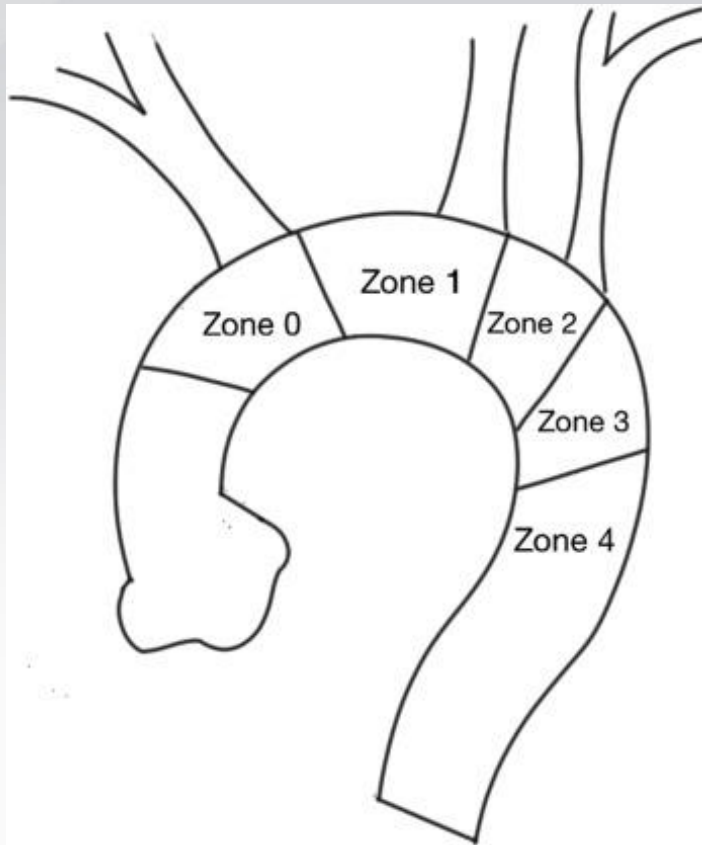
N=12

N=6

Bovine arch in 8 Pt

# Clinical Experience in Regensburg 11/2017 – 05/2018

- 21 Patients with proximal landing in aortic arch



Landing Zone	1	N=8
	2	N=5
	3	N=7

Landing in arch graft n=1

Products listed may not be available in all markets.

GORE®, TAG®, and designs are trademarks of W. L. Gore & Associates. © 2017 W. L. Gore & Associates, Inc.



# Clinical Experience in Regensburg 11/2017 – 05/2018

- 18 Cut down (16 unilateral); 2 Percutaneous
- Angulation control 15/23 Pt
- Technical success 100%
- Device movement during deployment (>5mm) in one patient with *antegrade* deployment (outside IFU)

# Clinical Experience in Regensburg 11/2017 – 05/2018

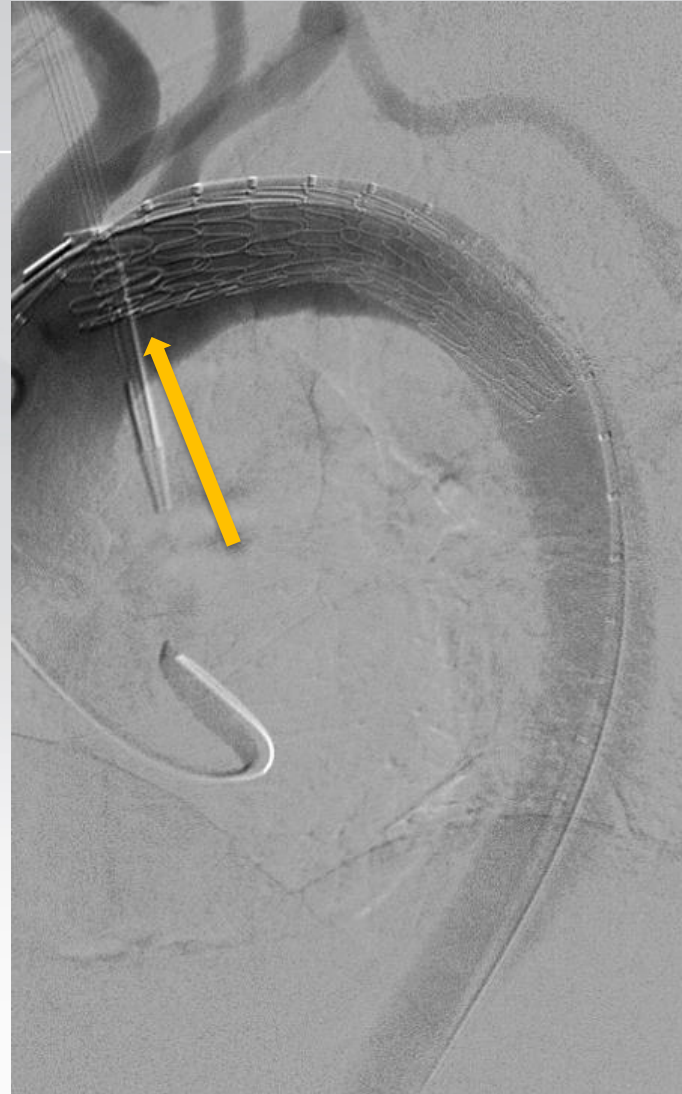
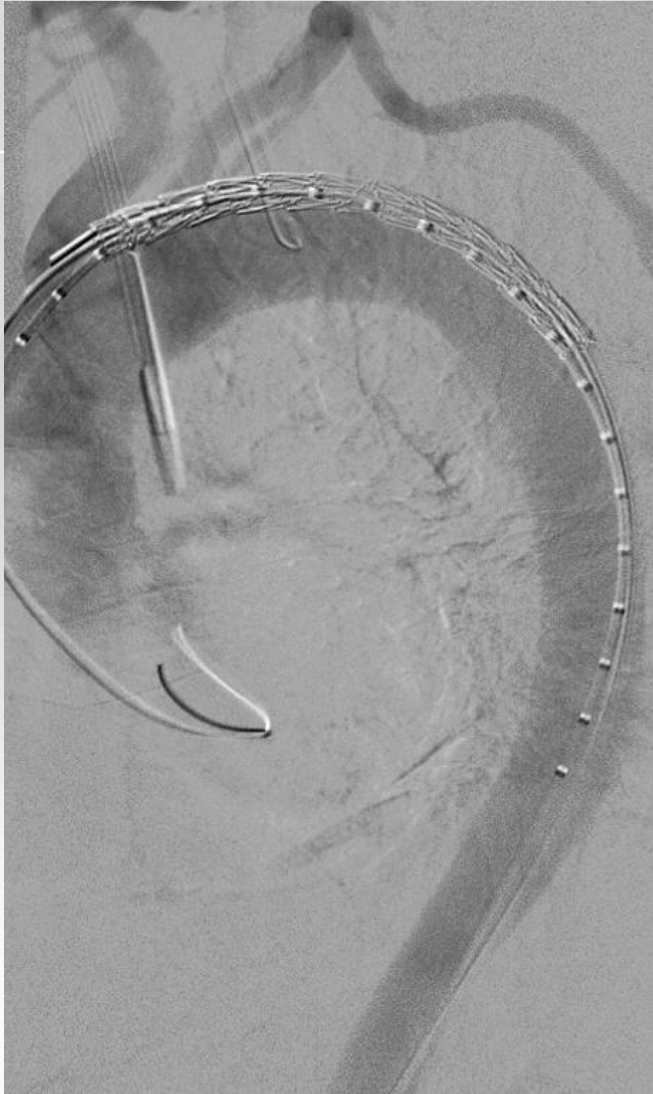
- Mortality 1/23 (ruptured Type B dissection-reanimation cerebral hypoxia)
- No Migrations
- 2 Distal extensions during FU in Type B dissections

# Type B Dissection with pleural effusion



# Partial Deployment

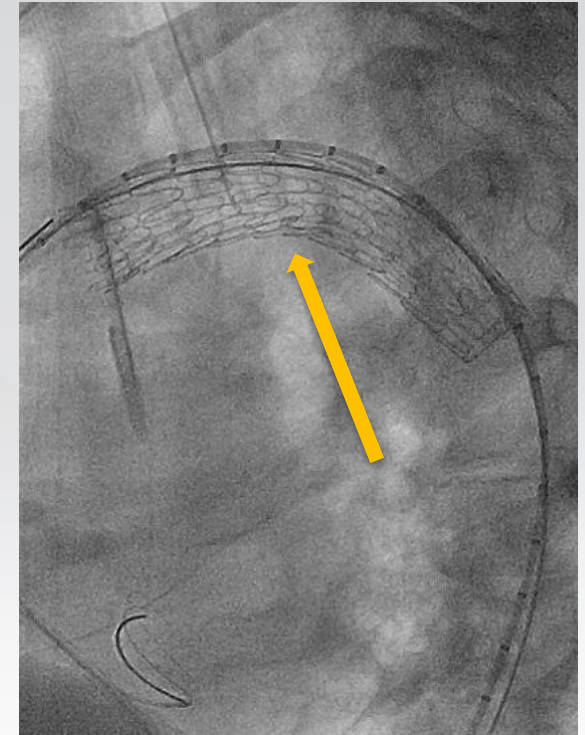
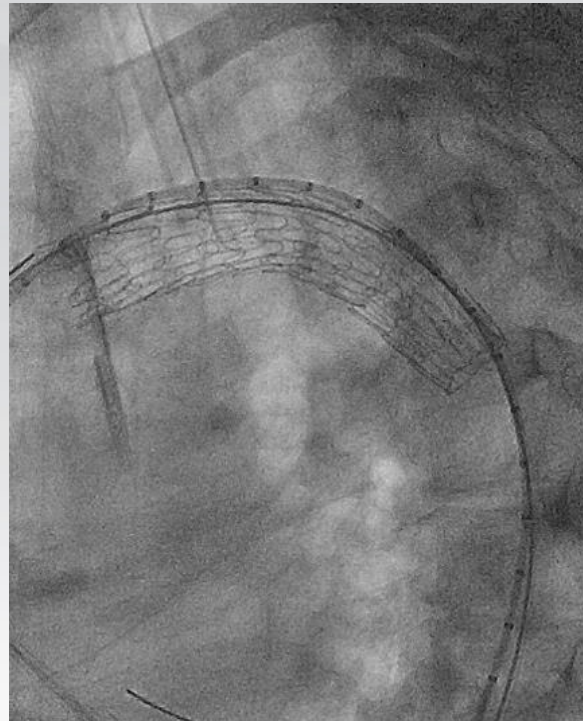
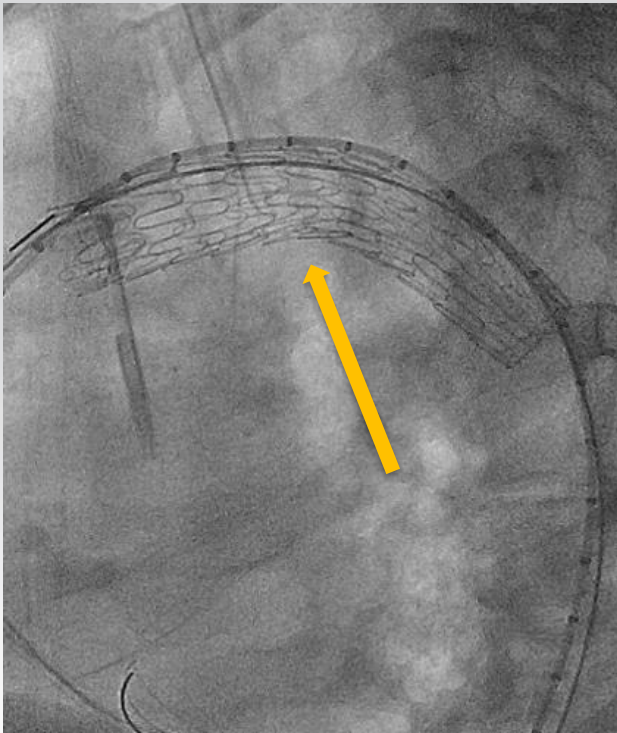
Pt 1



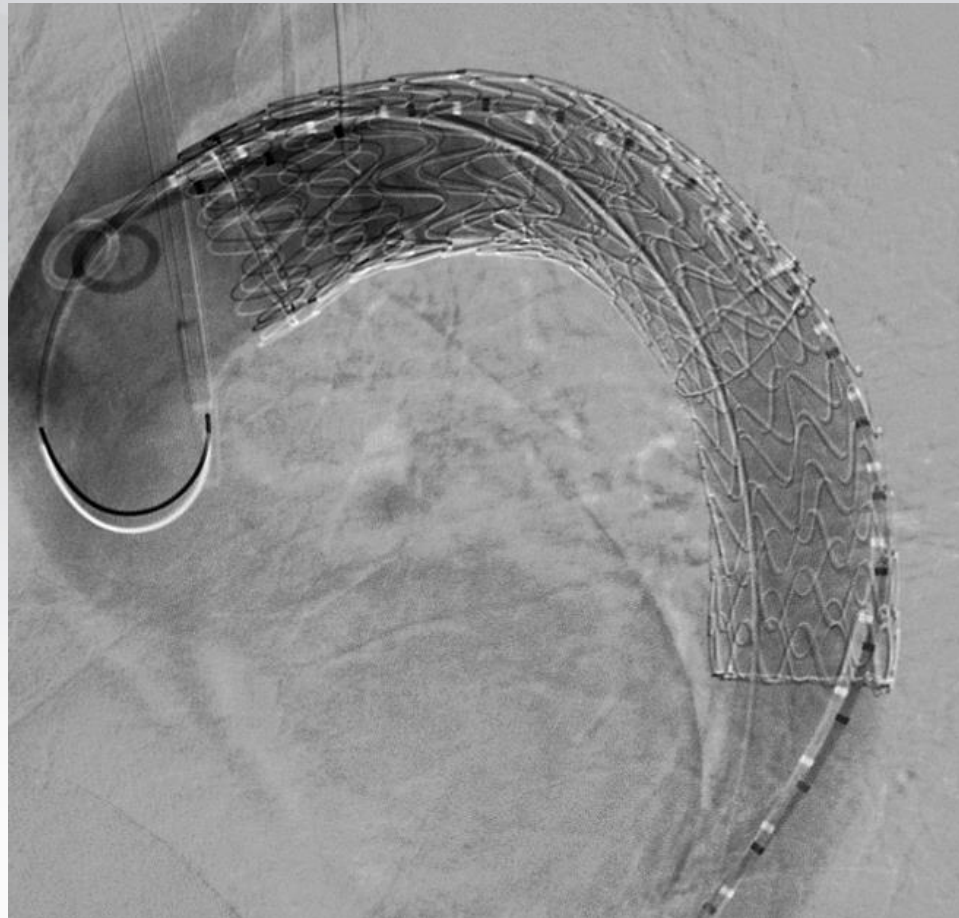
Products listed may not be available in all markets.  
GORE®, TAG®, and designs are trademarks of W. L. Gore & Associates. © 2017 W. L. Gore & Associates, Inc.



# Use of Active Control



# Completion Angiography



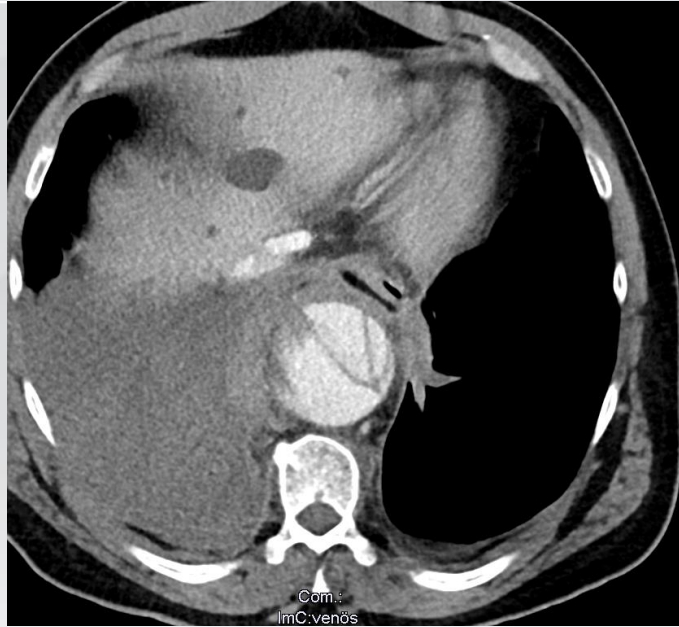
Products listed may not be available in all markets.  
GORE®, TAG®, and designs are trademarks of W. L. Gore & Associates. © 2017 W. L. Gore & Associates, Inc.



# Ruptured Type B Dissection

Pt 2

Compromised TL



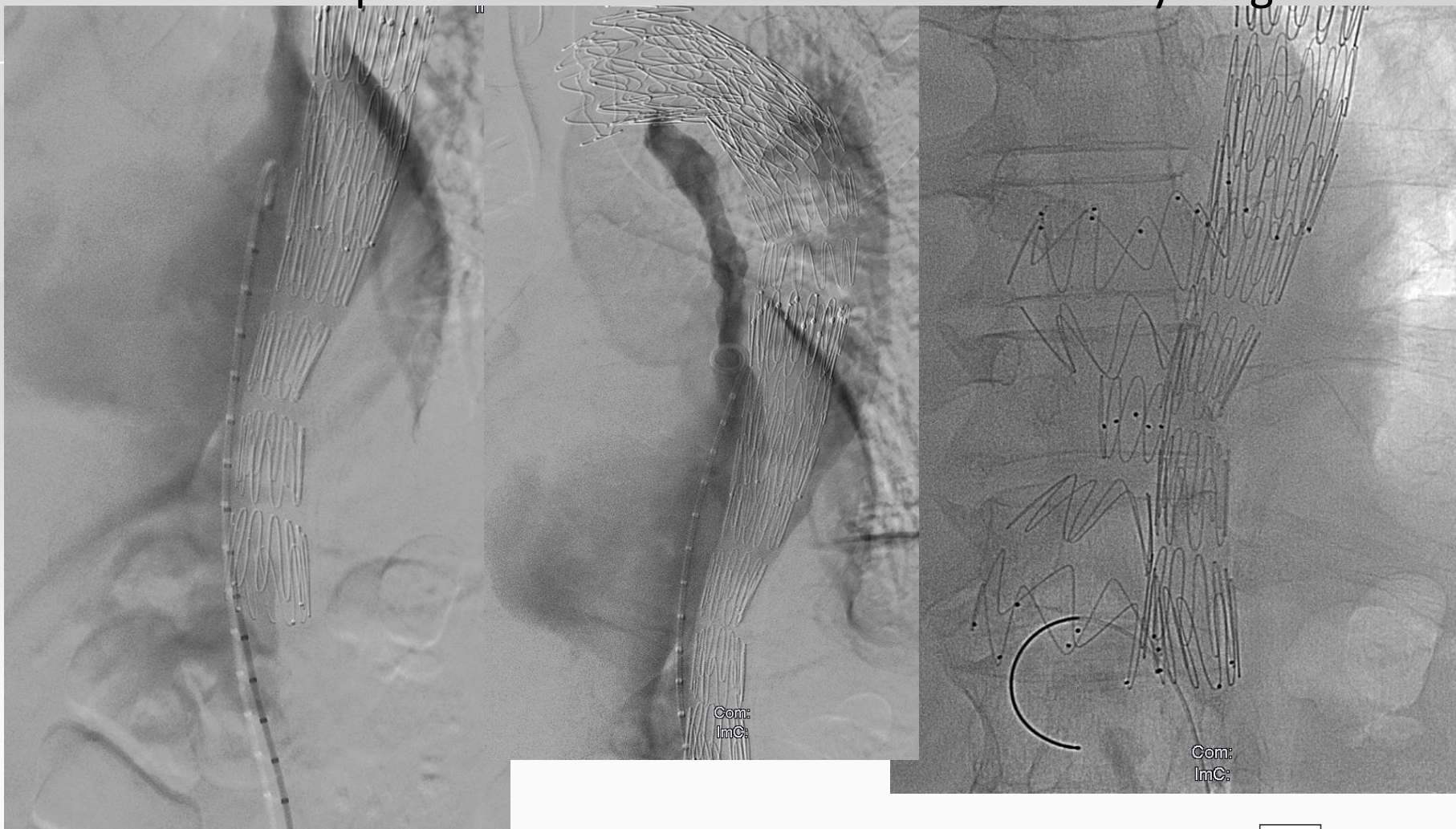
# Ruptured Type B Dissection



Products listed may not be available in all markets.  
GORE®, TAG®, and designs are trademarks of W. L. Gore & Associates. © 2017 W. L. Gore & Associates, Inc.



# Completion with distal extension and Candy Plug



# False Lumen patent but no extravasation



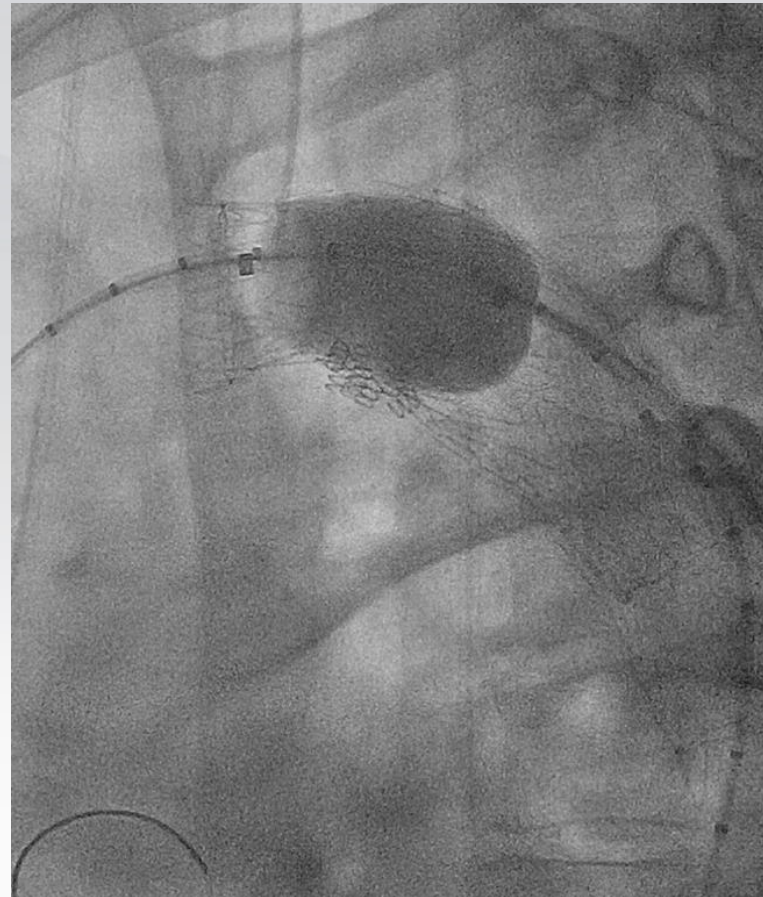


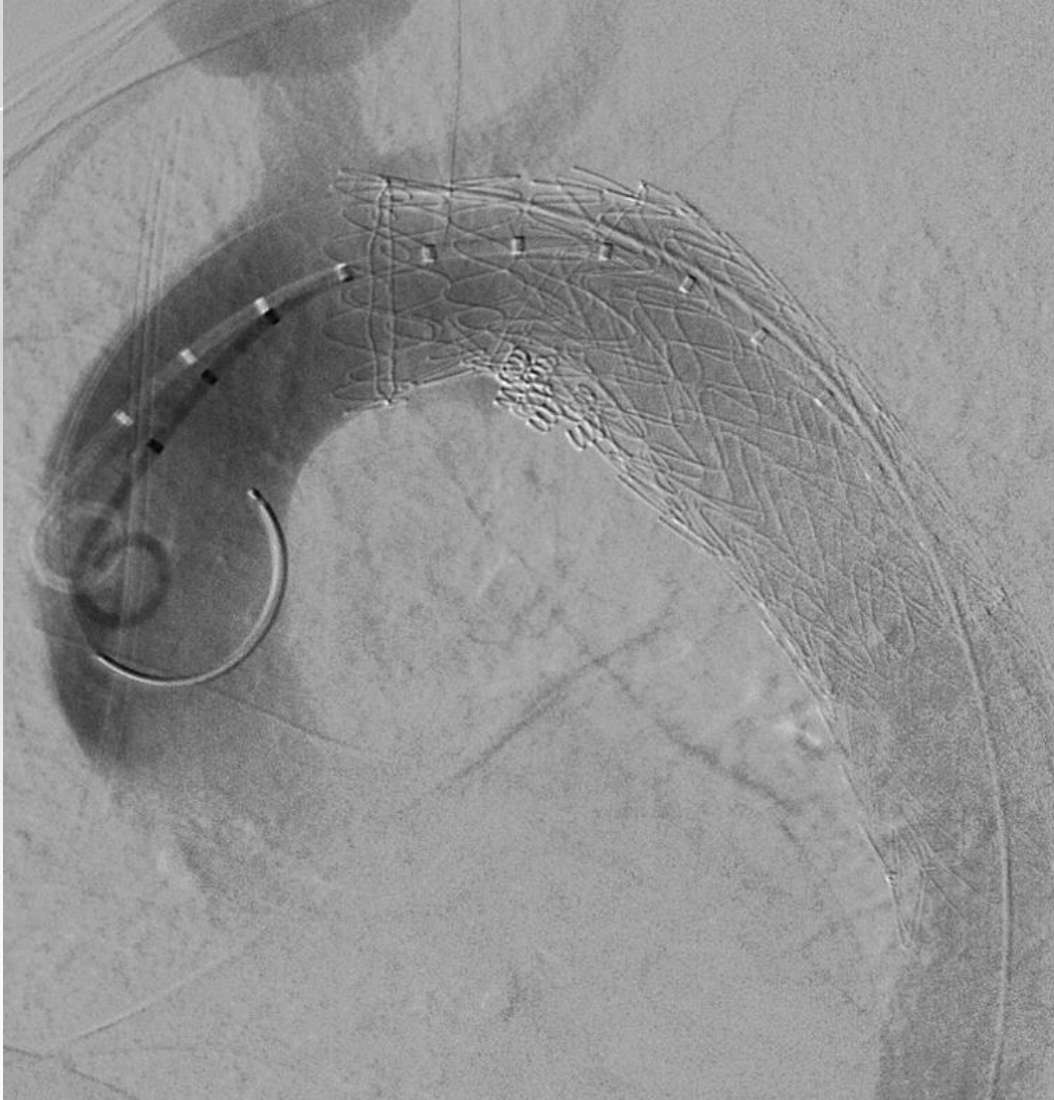
Partial graft collapse after previous TEVAR with pressure difference and claudication

## Use of angulation control



Proximal edge of graft  
perpendicular to the aortic axis





Products listed may not be available in all markets.  
GORE®, TAG®, and designs are trademarks of W. L. Gore & Associates. © 2017 W. L. Gore & Associates, Inc.



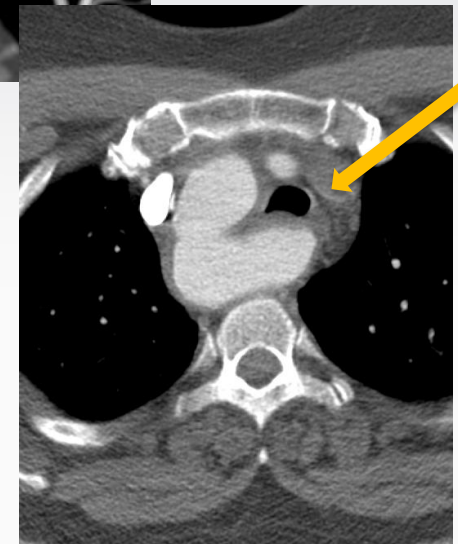
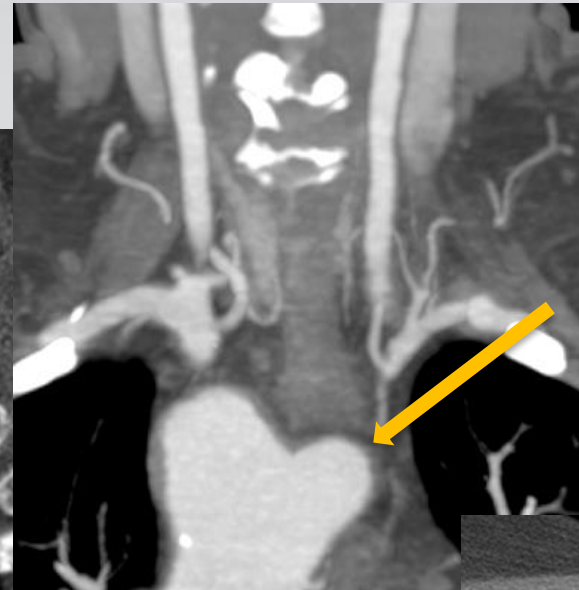


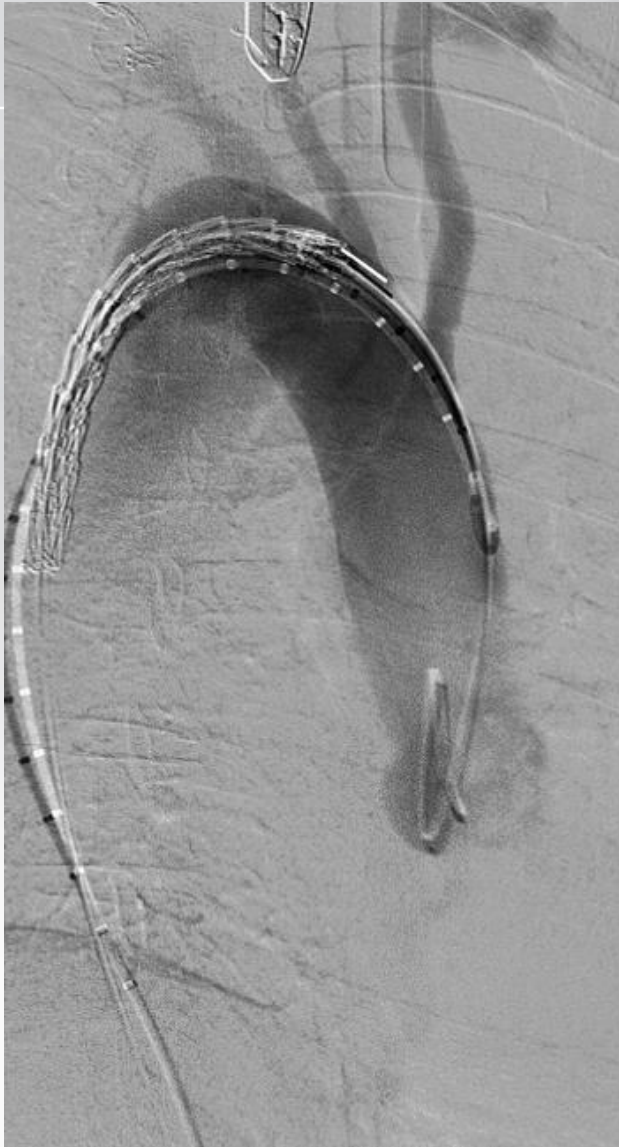
Products listed may not be available in all markets.  
GORE®, TAG®, and designs are trademarks of W. L. Gore & Associates. © 2017 W. L. Gore & Associates, Inc.



**Pt 4**

# Type III Arch with extreme angulation (Aorta descending to the right)

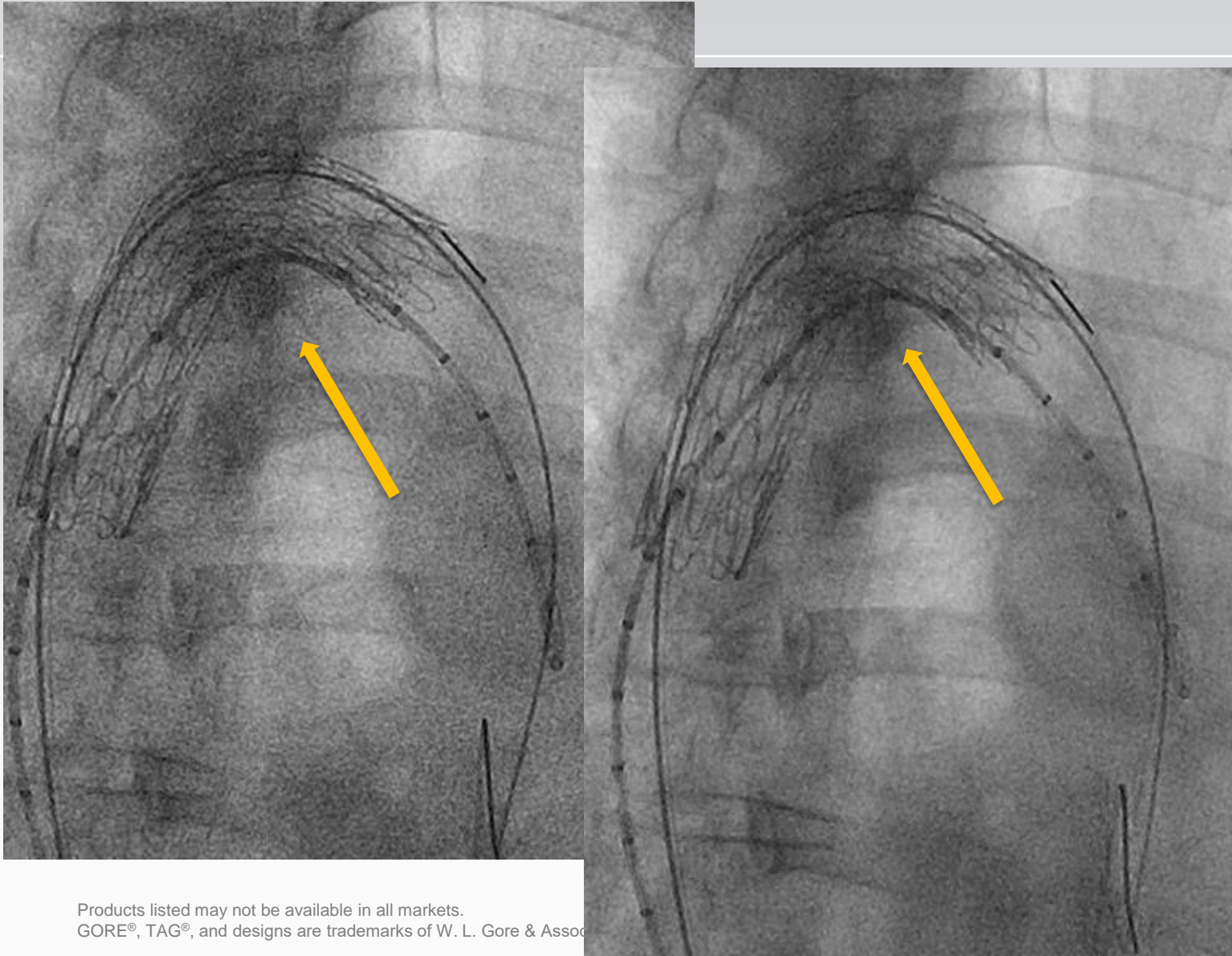




Products listed may not be available in all markets.  
GORE®, TAG®, and designs are trademarks of W. L. Gore & Associates. © 2017 W. L. Gore & Associates, Inc.



# Angulation Control



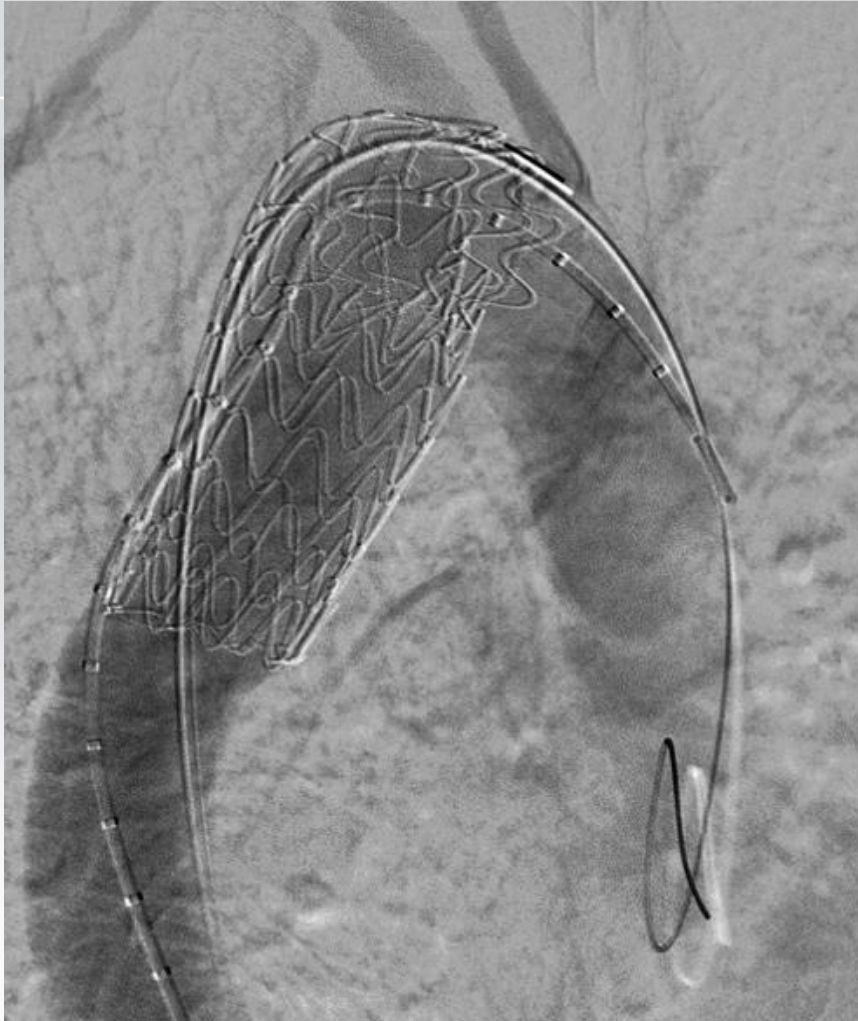
Products listed may not be available in all markets.  
GORE®, TAG®, and designs are trademarks of W. L. Gore & Assoc.

# Retraction and full deployment



Products listed may not be available in all markets.  
GORE®, TAG®, and designs are trademarks of W. L. Gore & Associates. © 2017 W. L. Gore & Associates, Inc.





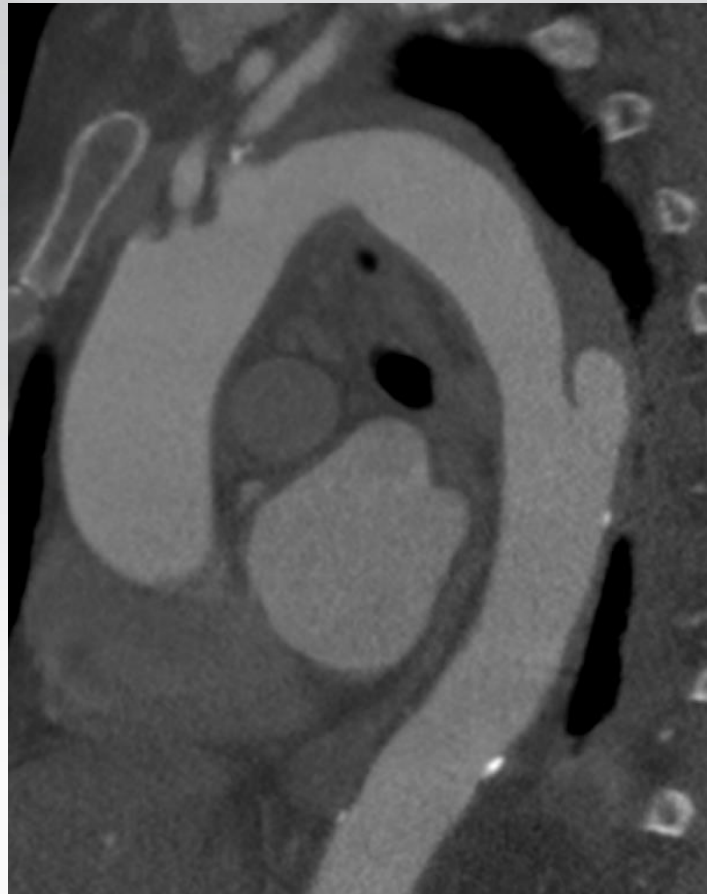
Products listed may not be available in all markets.  
GORE®, TAG®, and designs are trademarks of W. L. Gore & Associates. © 2017 W. L. Gore & Associates, Inc.



Good apposition even in extreme kinking



# IMH in Pt with Type III Arch



Pt 5

80	48
<small>kV</small>	<small>mA</small>
LAO	53°
	0°
Größe	+5
<small>cm</small>	
SID	111
<small>cm</small>	
FD	42
<small>cm</small>	
Exp	2
<small>1/s</small>	
Fluo	Niedrig
Zeit	06:19
K	4.99
	<small>mSv/s</small>
DAP	18538
	<small>mSvcm<sup>2</sup></small>
K	82
	<small>mGy</small>
	14:41

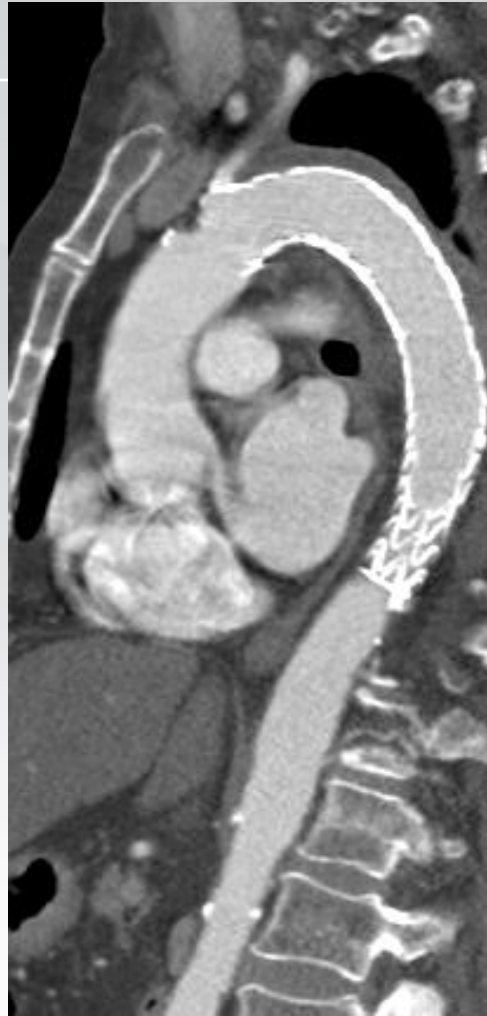
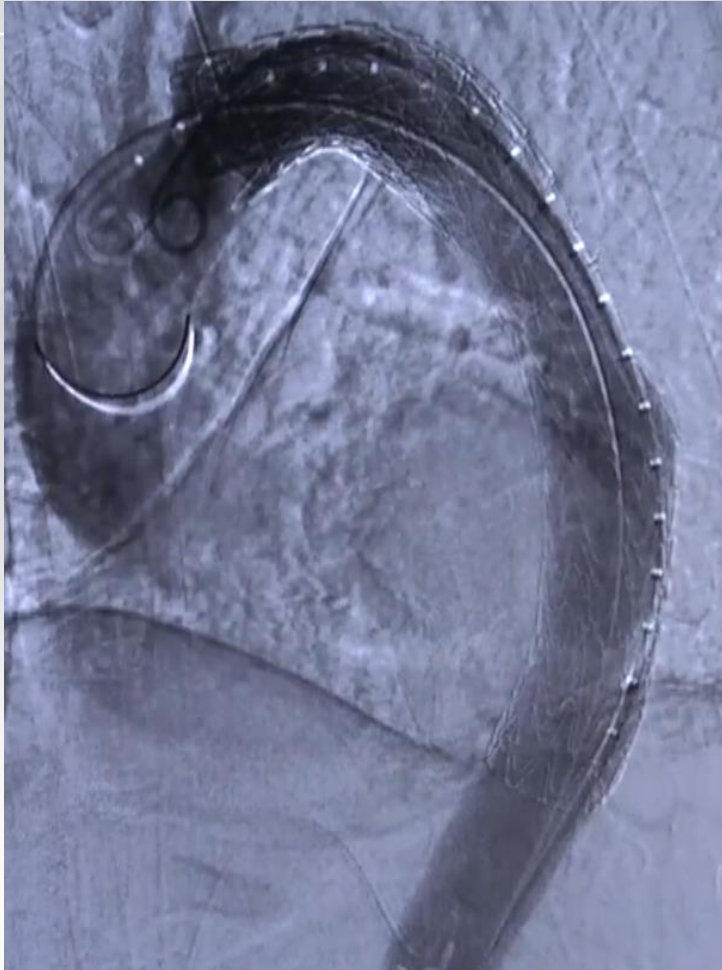


Products listed may not be available in all markets.  
GORE®, TAG®, and designs are trademarks of W. L. Gore & Associates. © 2017 W. L. Gore & Associates, Inc.



Optimal landing partially over LSA and apposition to the aortic wall

Pt 5



# Clinical Benefits

- Highly conformable
- No significant bare stent length
- Approved for aneurysms, isolated lesions and type B dissections
- Unsheathed device - Multiple devices (and Angio) with one sheath
- Staged Deployment – no rapid pacing necessary
- Angulation control
- There is time to optimize parallax, position, angulation
- *Good for beginners and pros...*

Products listed may not be available in all markets.

GORE®, TAG®, and designs are trademarks of W. L. Gore & Associates. © 2017 W. L. Gore & Associates, Inc.



# *Thank you for your attention*



**W. L. GORE & ASSOCIATES, INC.**  
Flagstaff, AZ 86004

+65.67332882 (Asia Pacific)  
00800.6334.4673 (Europe)  
800.437.8181 (United States)  
928.779.2771 (United States)

**[goremedical.com](http://goremedical.com)**



Products listed may not be available in all markets.

GORE®, TAG®, and designs are trademarks of W. L. Gore & Associates.  
© 2017 W. L. Gore & Associates, Inc. AW1460-EN1 SEPTEMBER 2017