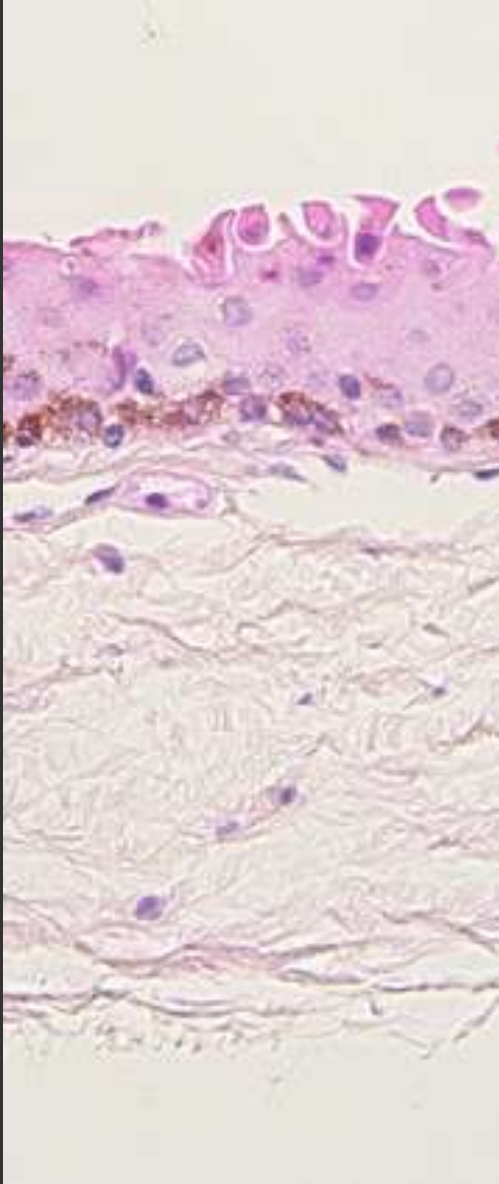


Management of the most frequent benign and malignant conjunctival tumors and pseudo-tumors



47th Panhellenic Ophthalmological Congress, Thessaloniki, 28.5-1.6 2014

Leonidas Zografos, MD, Lausanne



Conjunctival epithelium

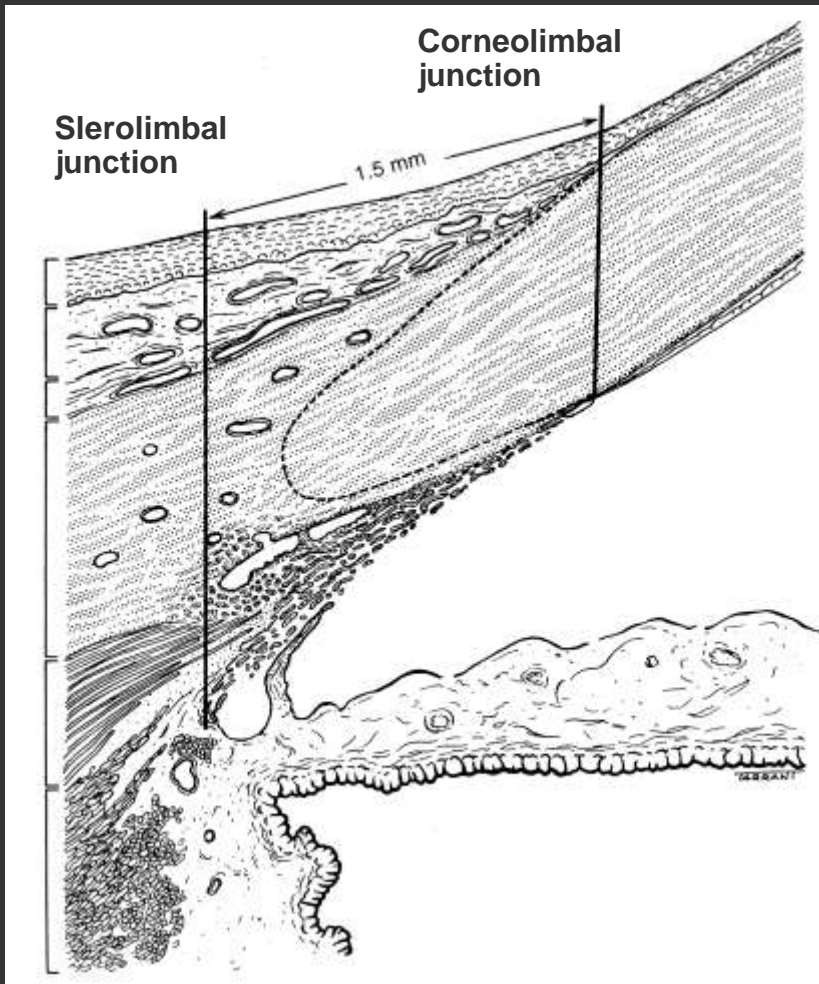
- Pigmented tumors
- Epithelial tumors and pseudotumors

Basal membrane

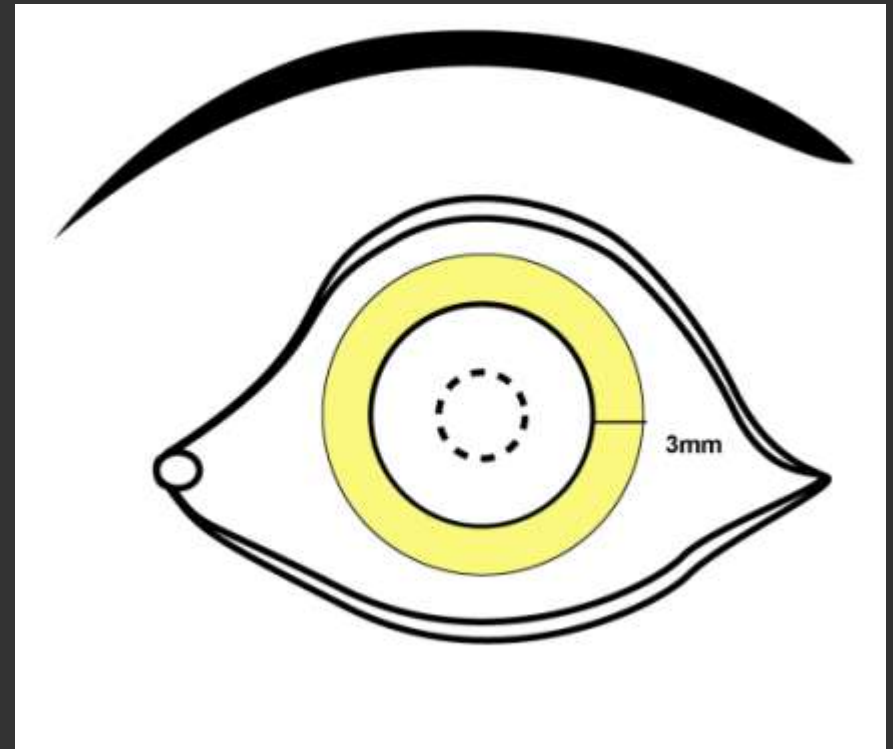
Substantial propria

- Vascular tumors
- Fibrous, neural, xanthomatous and myxomatous tumors
- Lymphoid and metastatic tumors

Anatomy of the sclerocorneal limbus



Wolff's anatomy of the eye and orbit A. 1997



Bulbar conjunctiva

- Limbal conjunctiva
- Scleral conjunctiva

Epithelial Tumors and Tumor – Like Lesions

Surface Epithelia

Benign Lesions

- Squamous cell papilloma
- Keratotic plaque
- Pseudocarcinomatous hyperplasia
- Keratoacanthoma
- Cysts

Precancerous Lesion

- Actinic keratosis
- Xeroderma pigmentosum
- Carcinoma in situ

Malignant Lesion

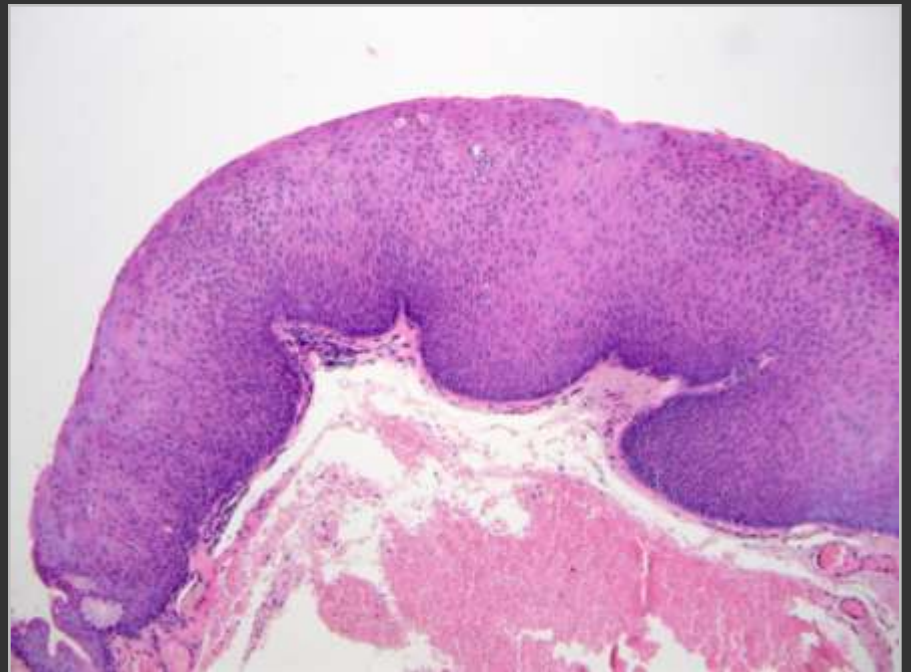
- Squamous cell carcinoma
- Spindle cell carcinoma
- Mucoepidermoid carcinoma

Adnexal Tumors

- Oncocytoma
- Pleomorphic adenoma
- Sweat gland carcinoma
- Sebaceous carcinoma

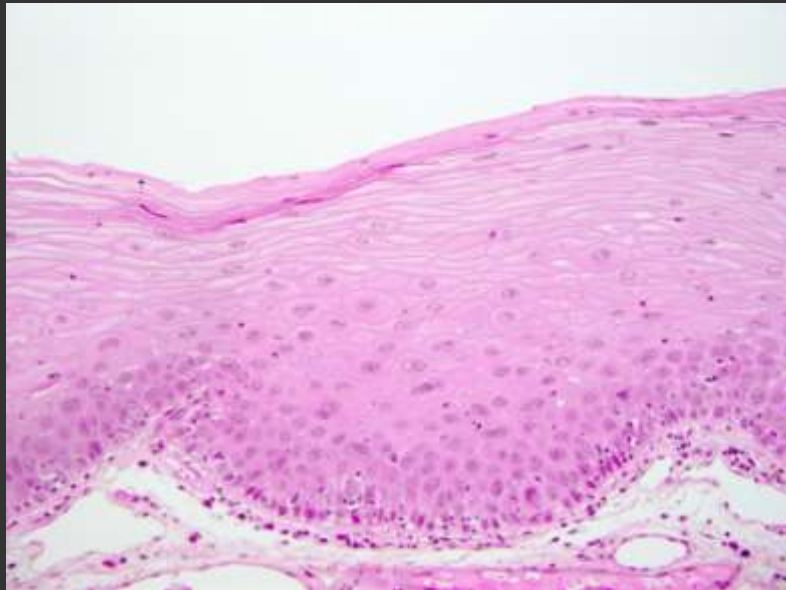
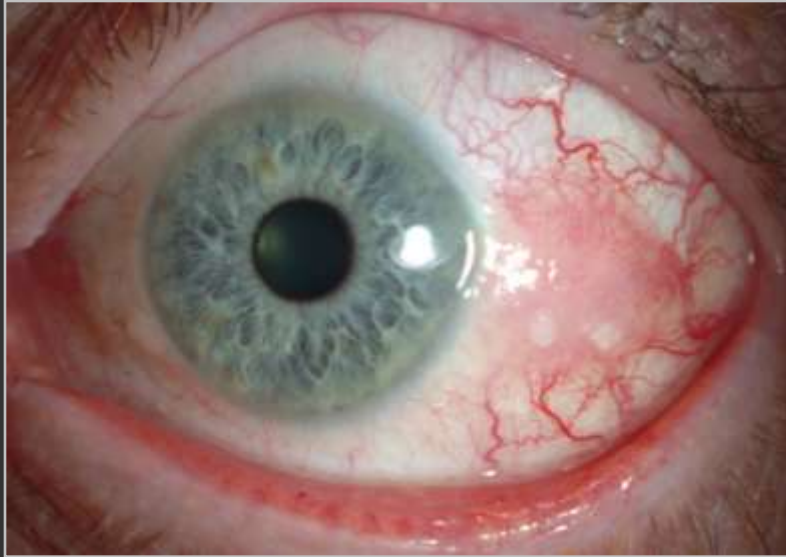
Precancerous and malignant epithelial tumor of the conjunctiva

- Actinic keratosis
- Benign dysplasia
- Xeroderma pigmentosum
- Carcinoma in situ
- Squamous cell carcinoma
- Mucoepidermoid ca.

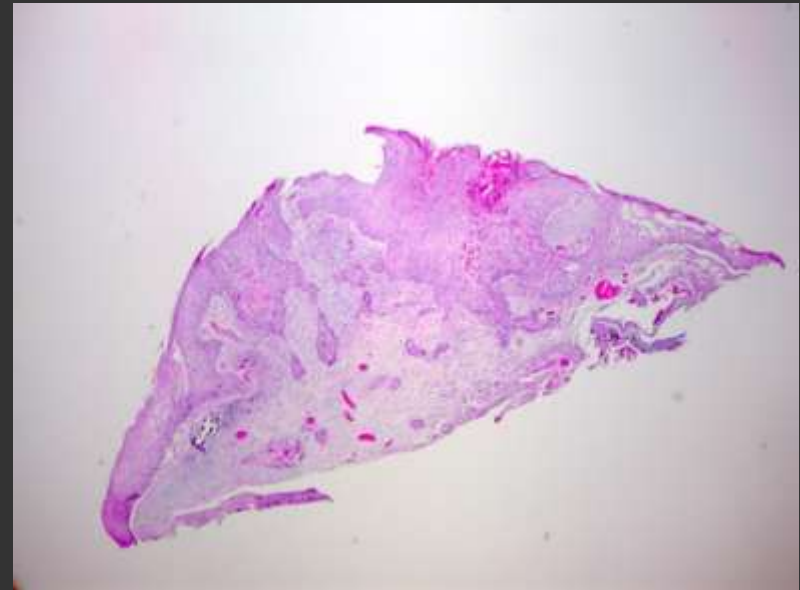


HE 126x

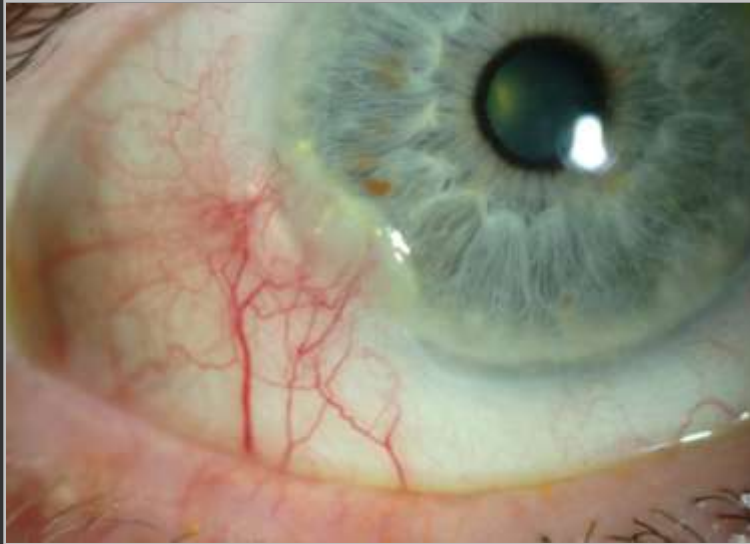
Carcinoma in situ



Squamous cell carcinoma



SIN / Squamous cell carcinoma



Gelatinous



Papilliform



Nodular



Diffuse

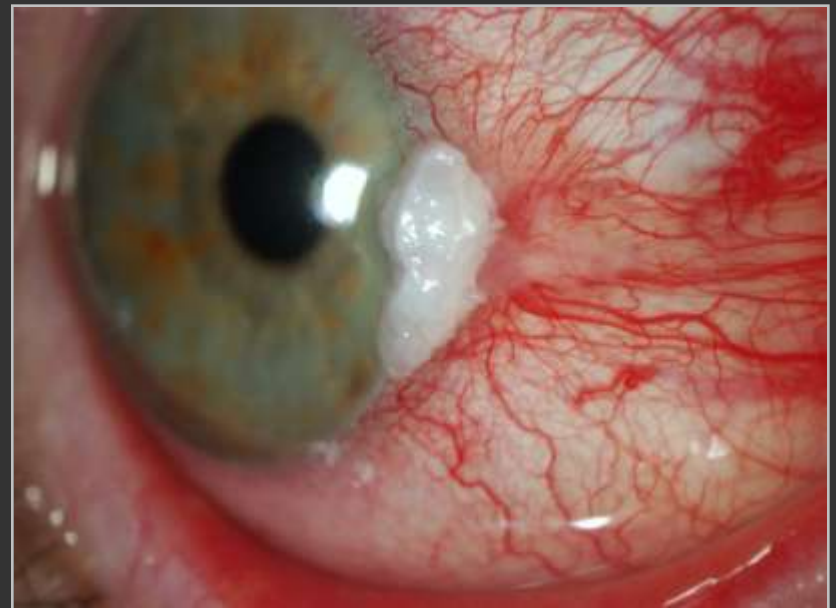
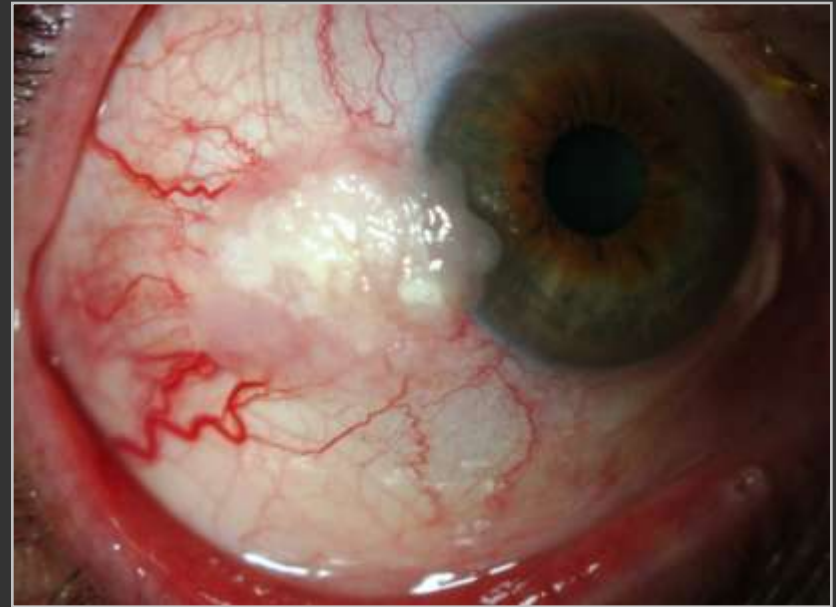
SIN / Squamous cell carcinoma

Leucoplakia

Absent

Limited

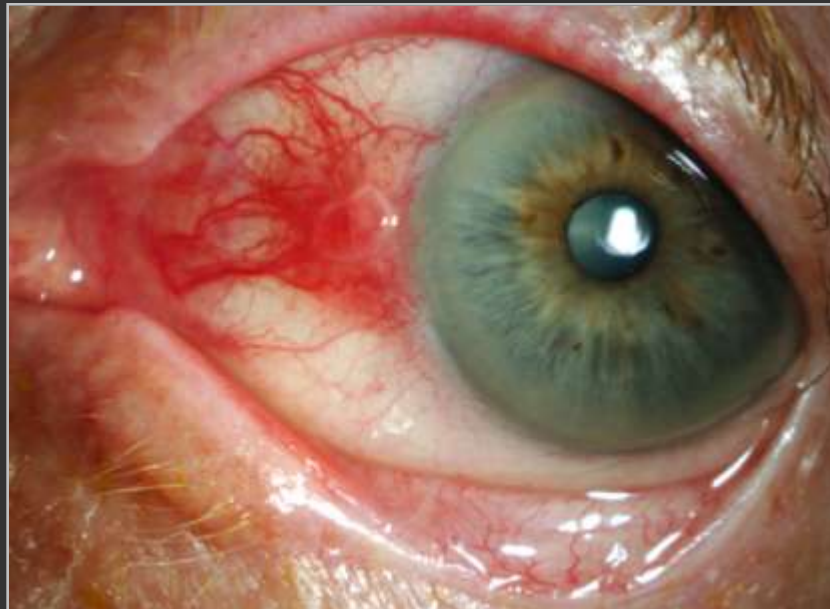
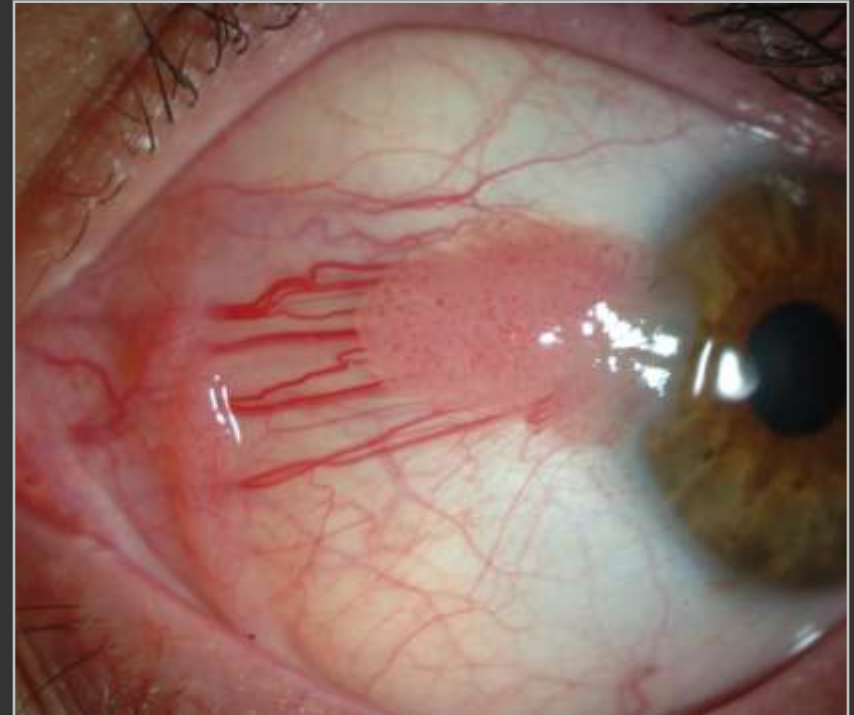
Extensive **p - n.s.**



SIN / Squamous cell carcinoma



Vascularisation



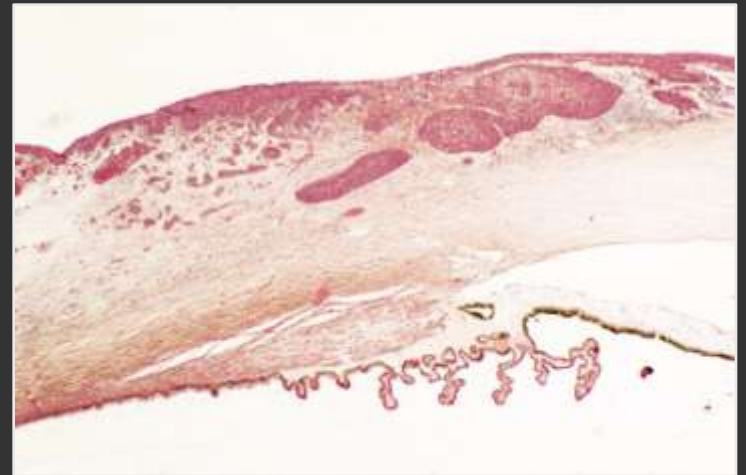
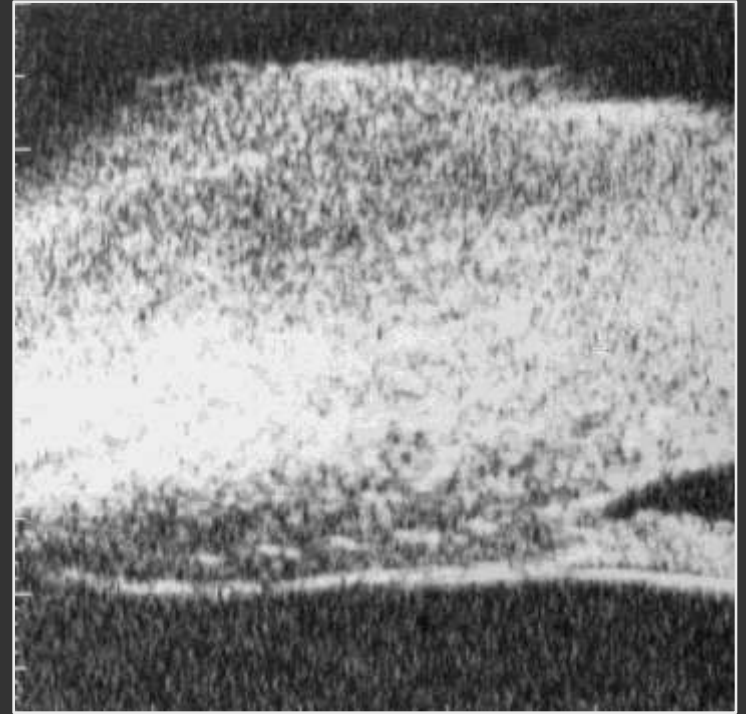
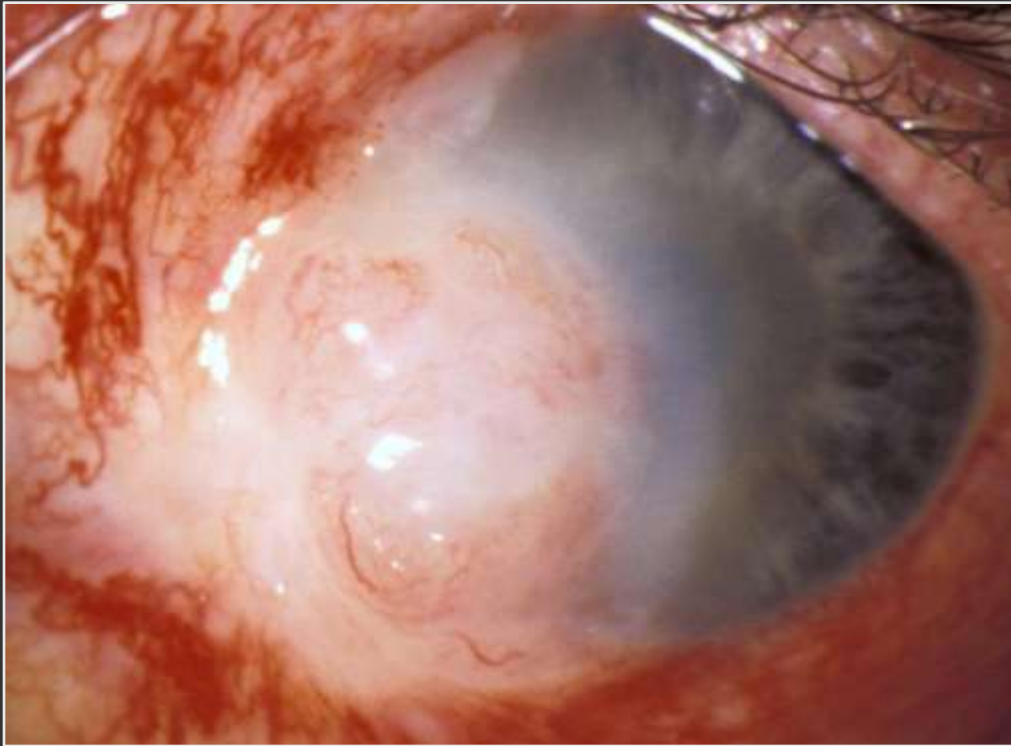
Conjunctival

Episcleral

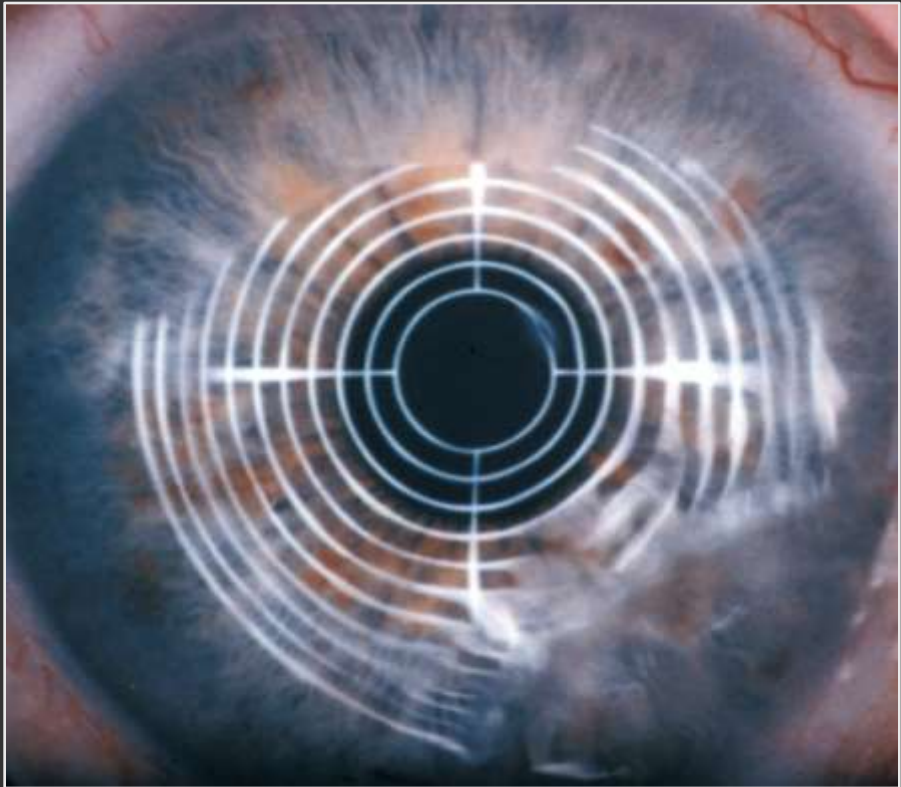
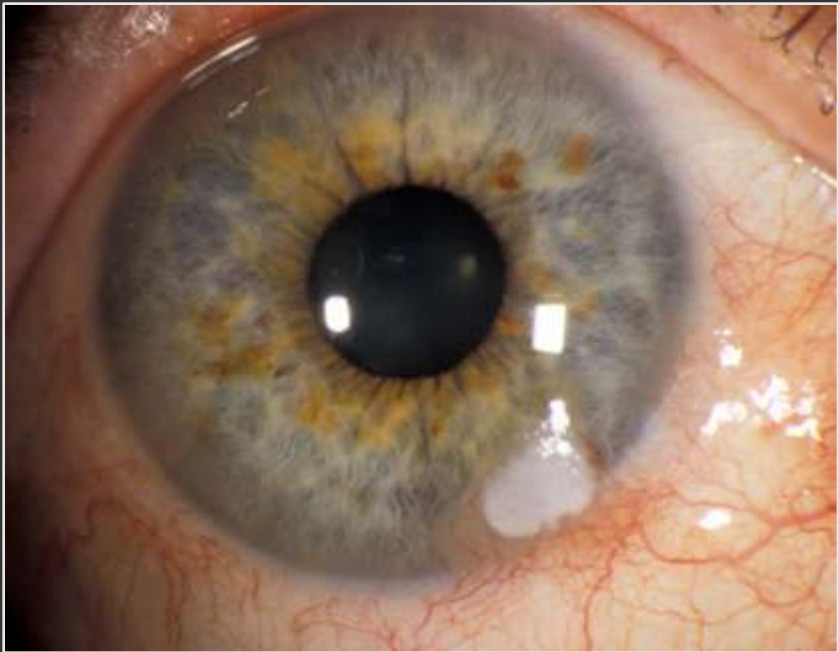
Mixte

p = 0.02

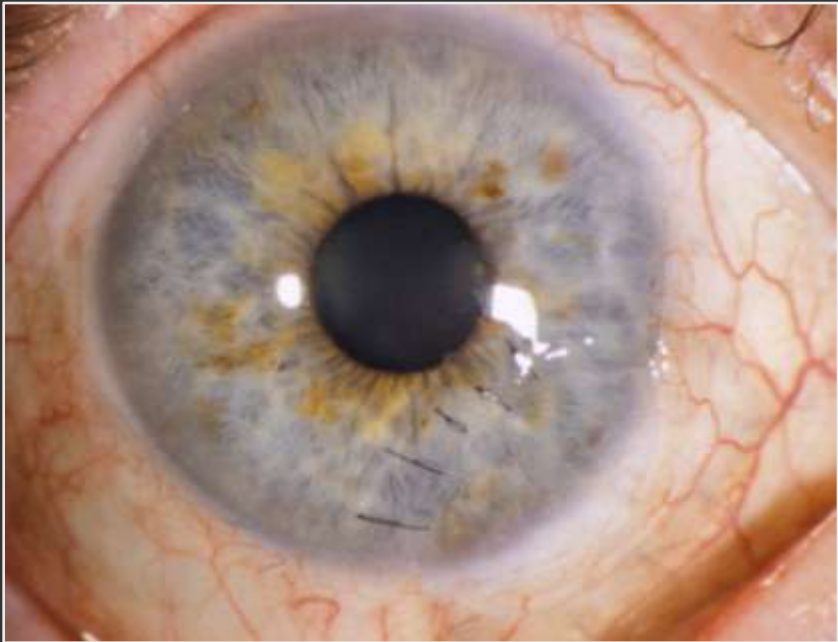
Squamous cell carcinoma



Squamous cell carcinoma



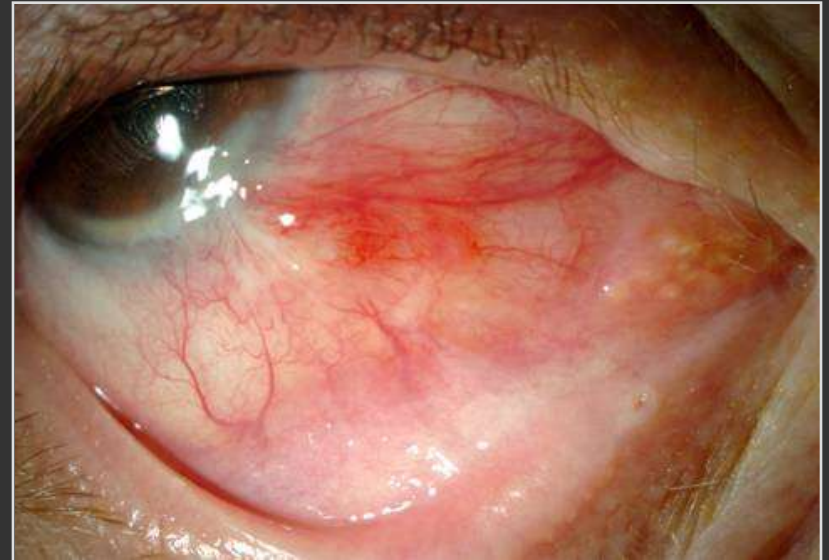
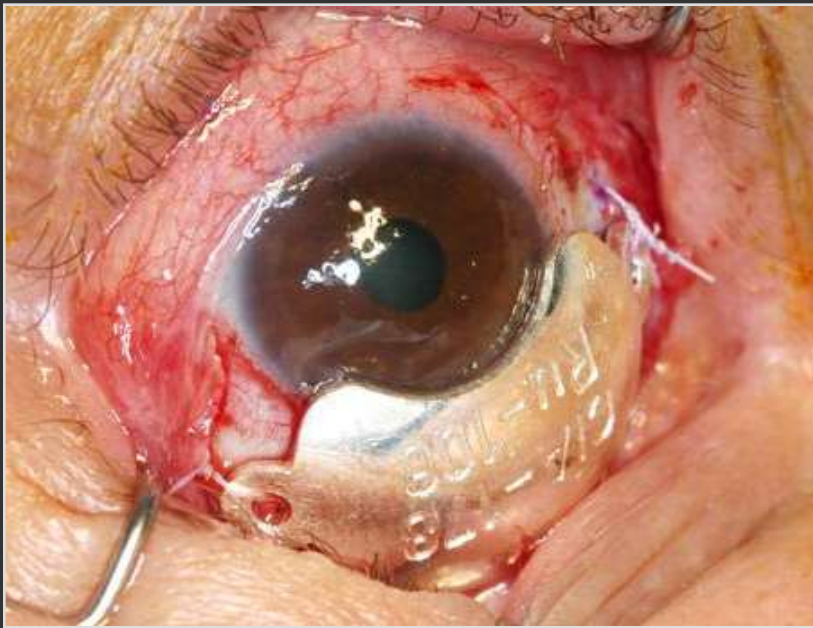
Lamellar corneal graft



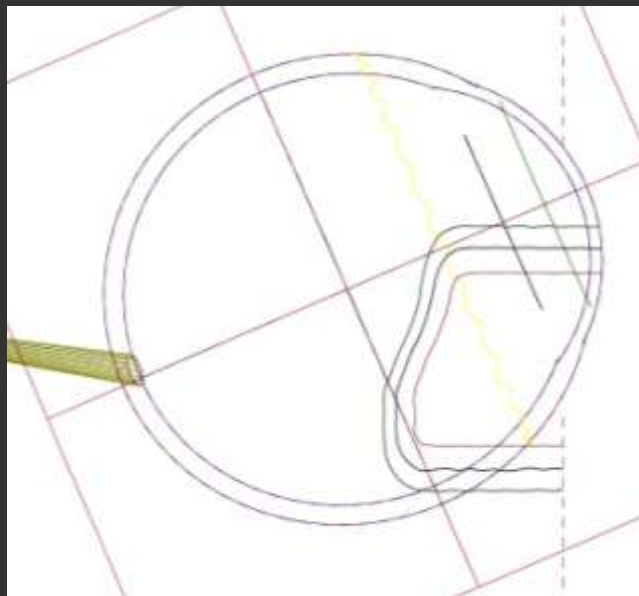
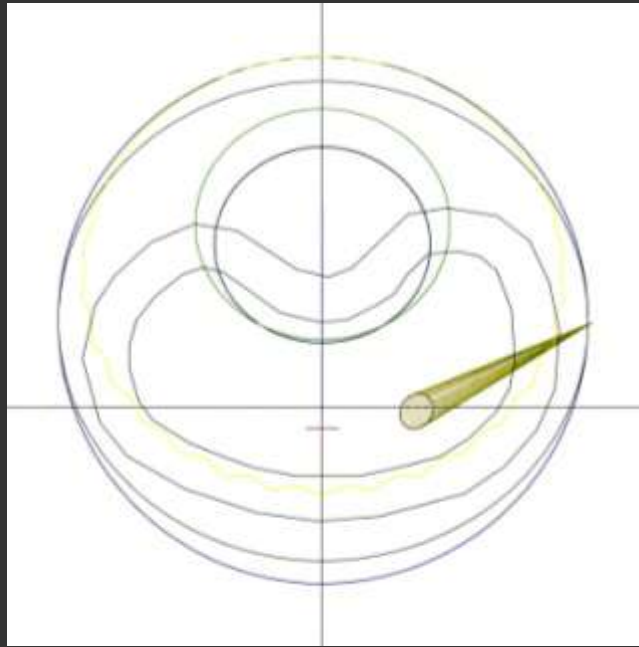
Squamous cell carcinoma

Surgical excision

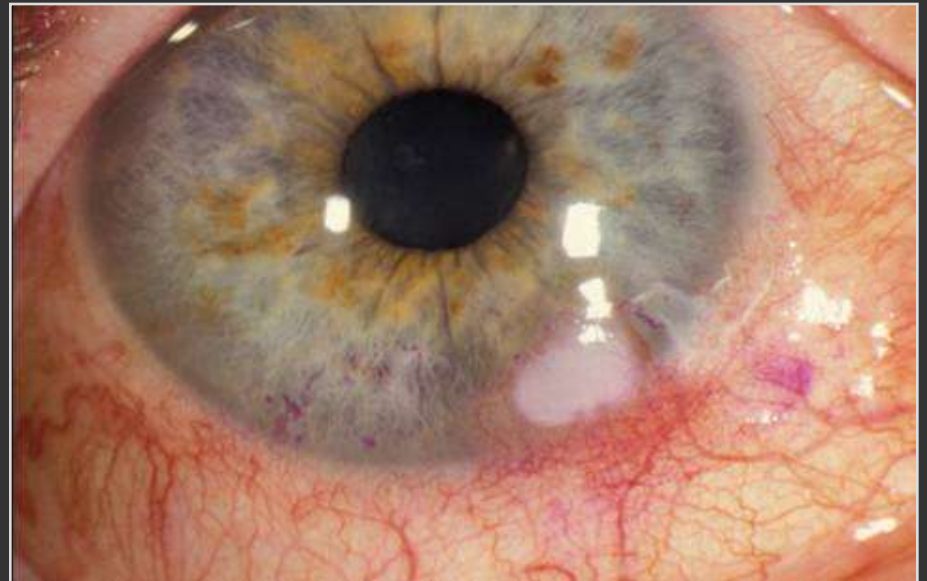
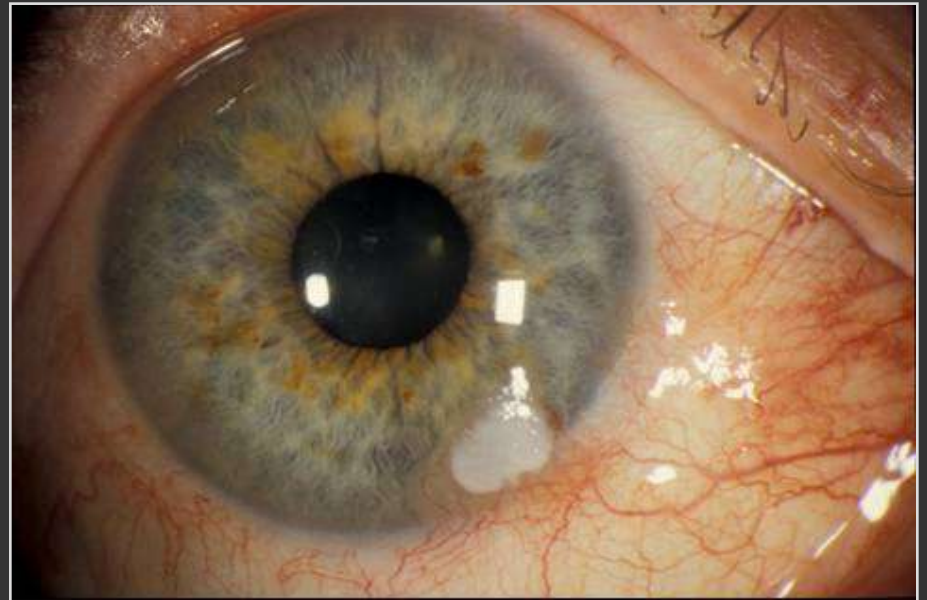
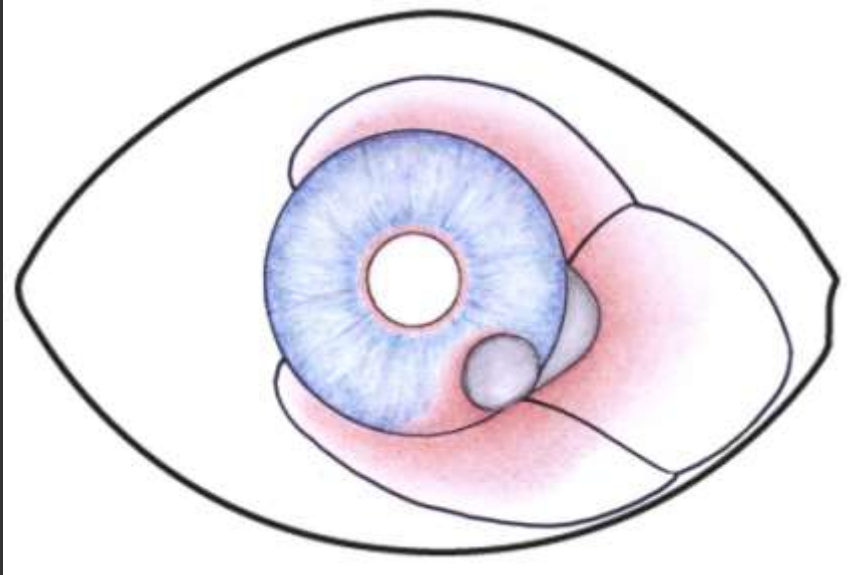
$^{106}\text{Ru}/^{106}\text{Rh}$ Brachytherapy



Proton beam irradiation

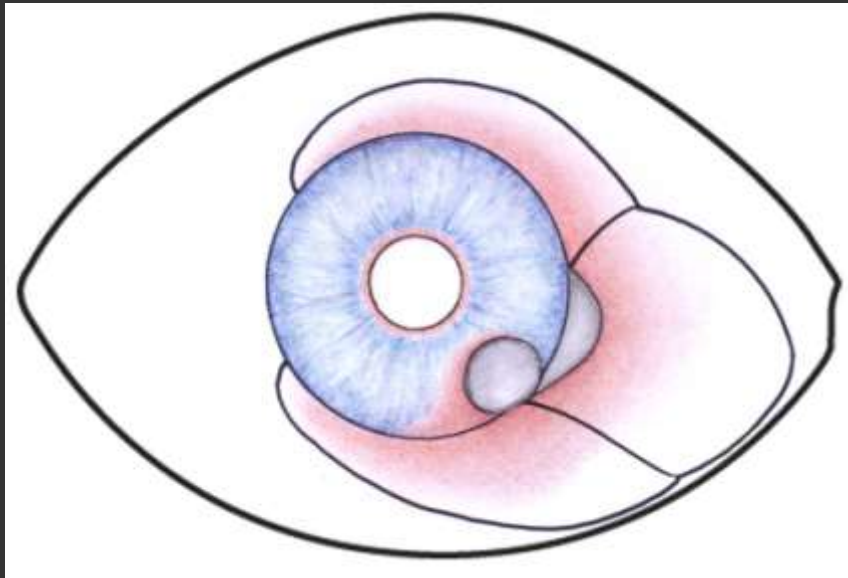


SIN / Squamous cell carcinoma

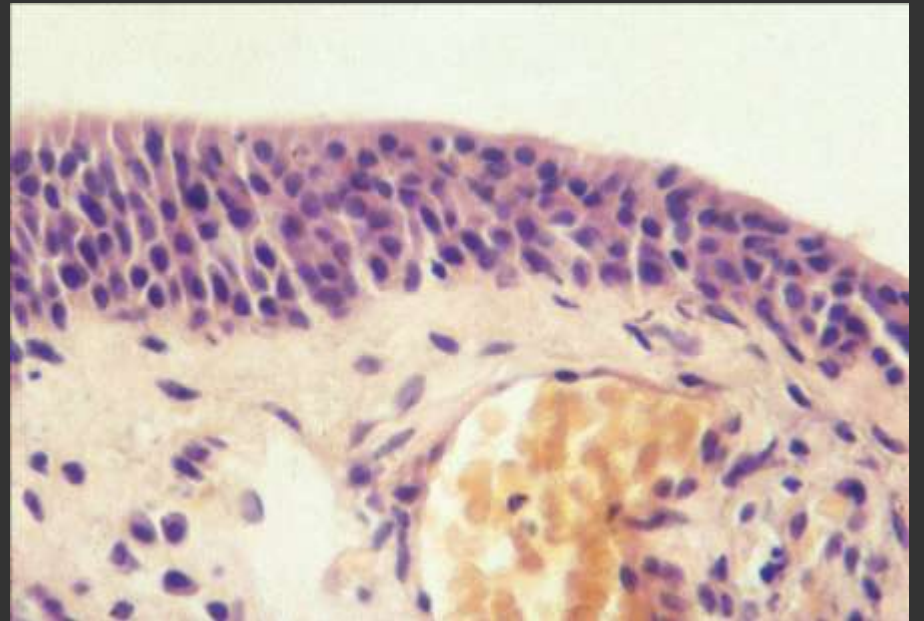
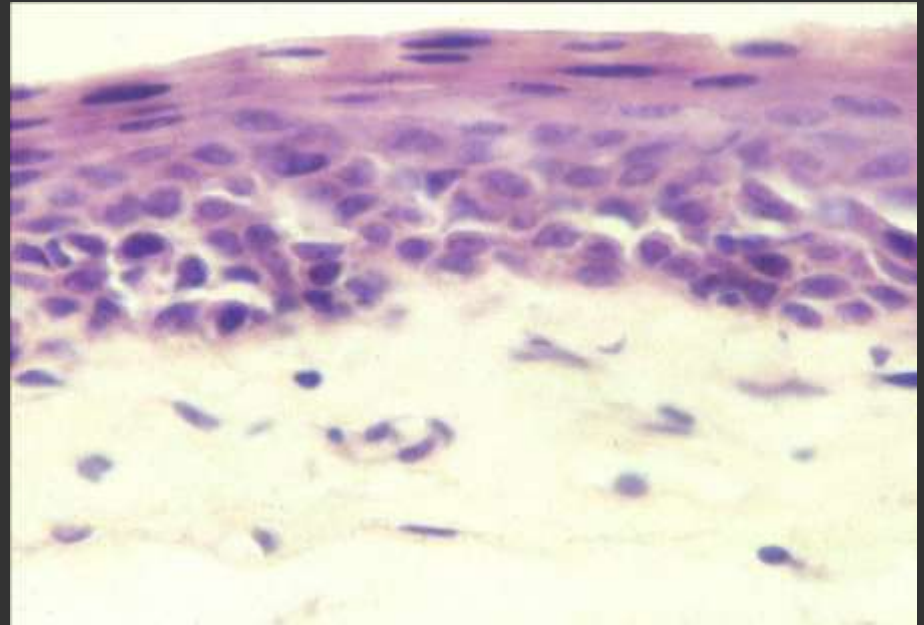


Rose Bengal

**SIN /
Squamous cell
carcinoma**



**Conjunctival
micro-invasion**



Topical chemotherapy

2 weeks Mitomycine 0.04% 4x

2 weeks Col. Steroide 3x/j.

2 weeks Mitomycine 0.04% 4x

2 weeks Col. Steroide 3x/j.

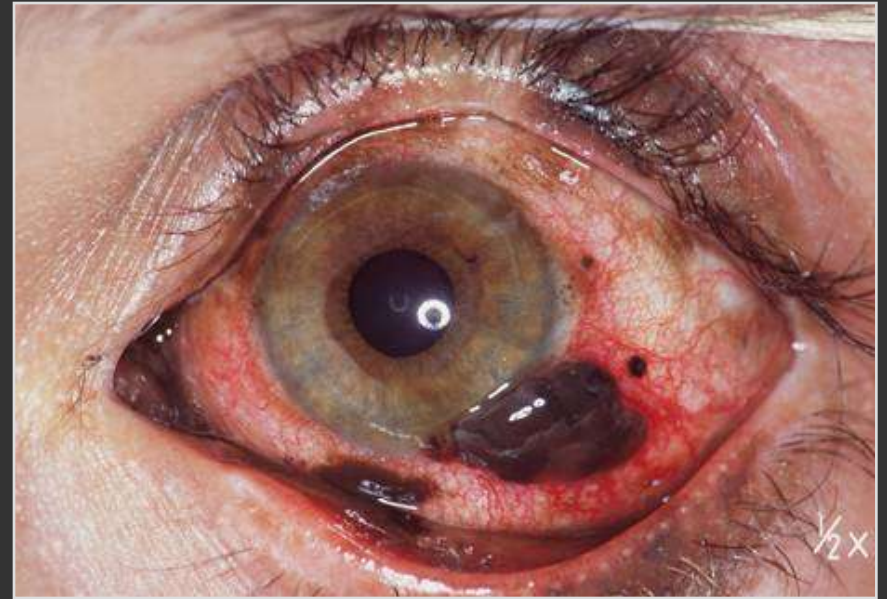


Pigmented tumors of the conjunctiva

Melanosis

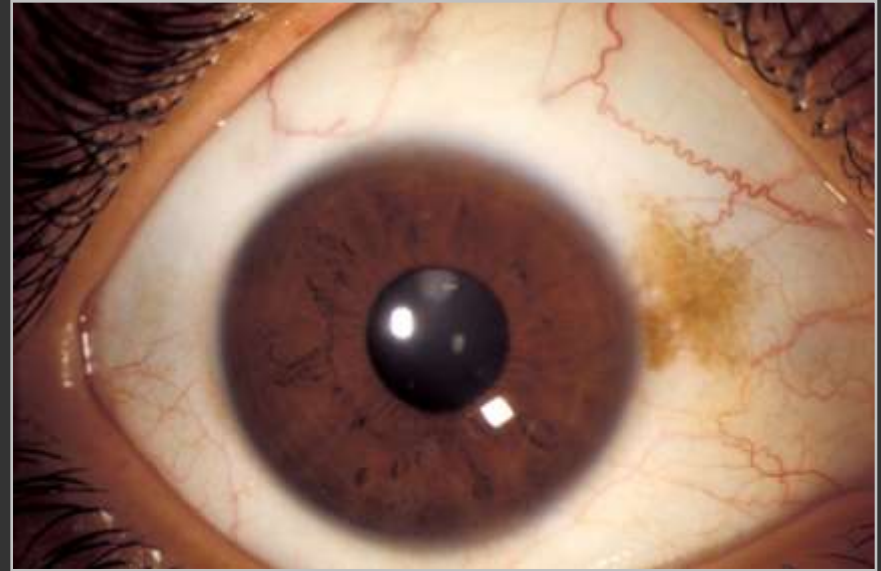
Nevi

Melanomas



Congenital melanosis

Epithelial :
Freckle

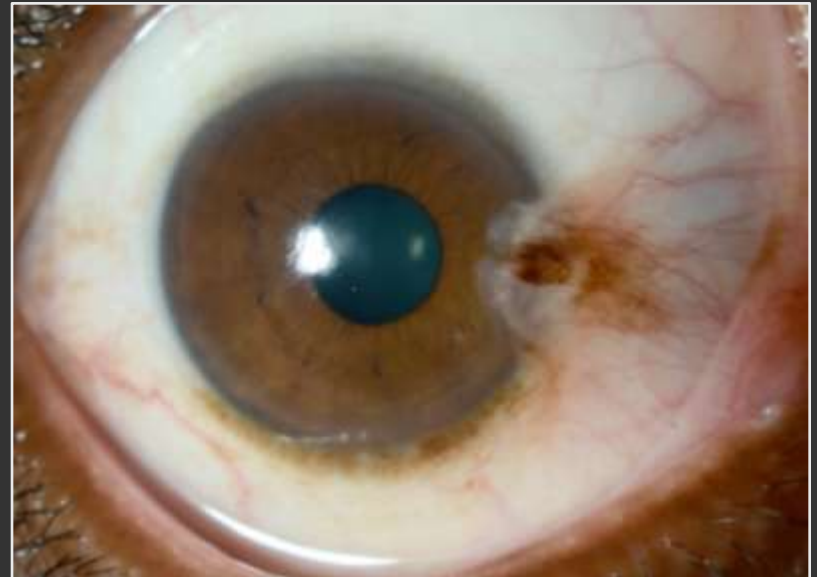
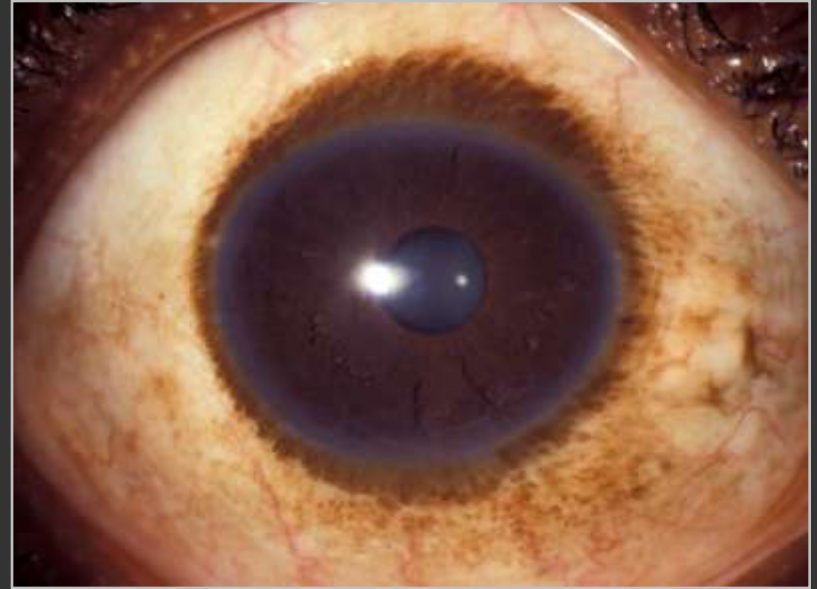


Sub-epithelial :
Scleral / Episcleral
Ocular Melanocytosis



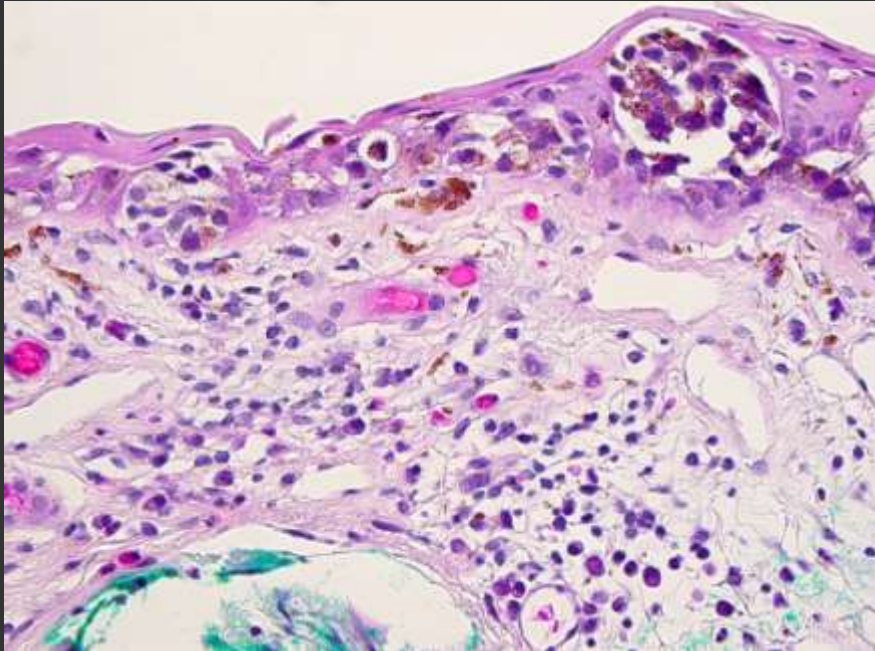
Acquired Melanosis

- **Bilateral**
Racial melanosis
Metabolic
- **Unilateral**
Secondary
Primary



PAM

Primary Acquired Melanosis

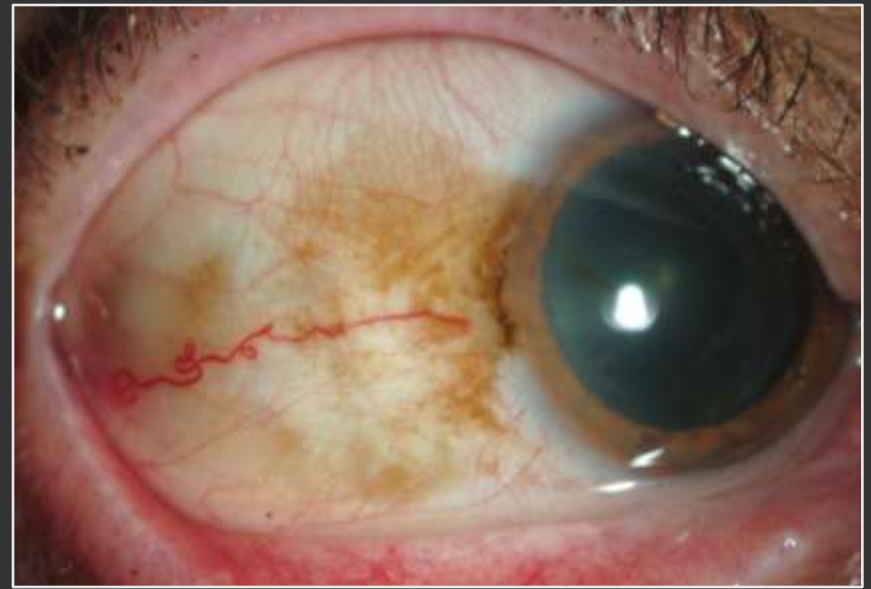


Middle age patients

Abnormal melanocytes near the basal layer of the epithelium

Atypia +/-

Evolution into melanoma

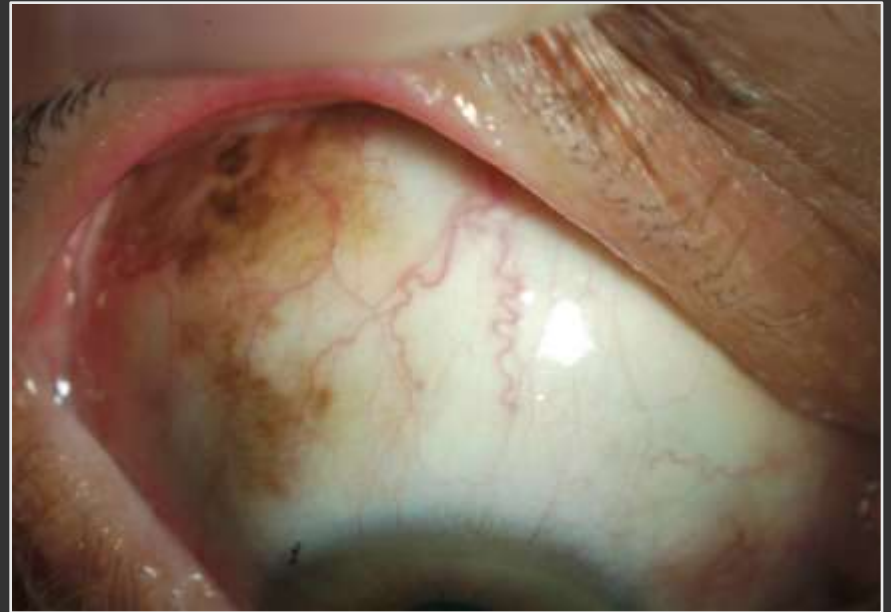


Sectorial



Wide-spread

PAM-Management
Periodic observation
Surgical excision
Topical chemotherapy



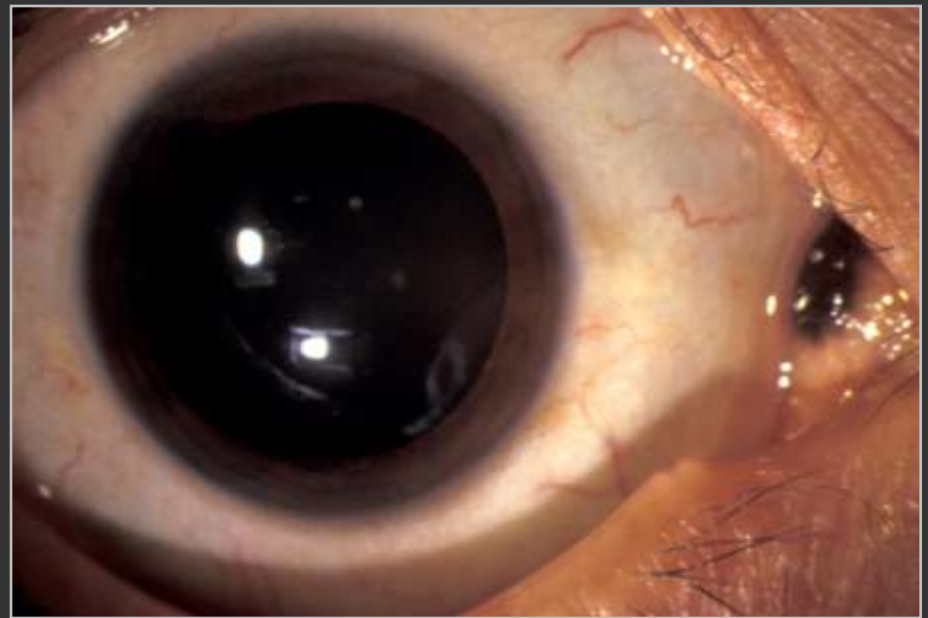
Nevi

Phase of growth

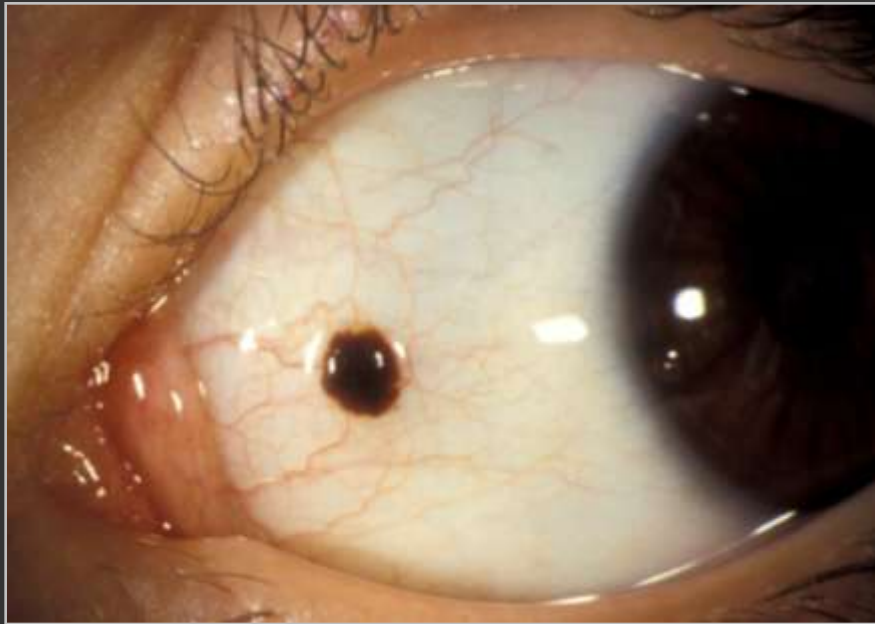
Phase of maturation and
self-arrest

Stationary phase

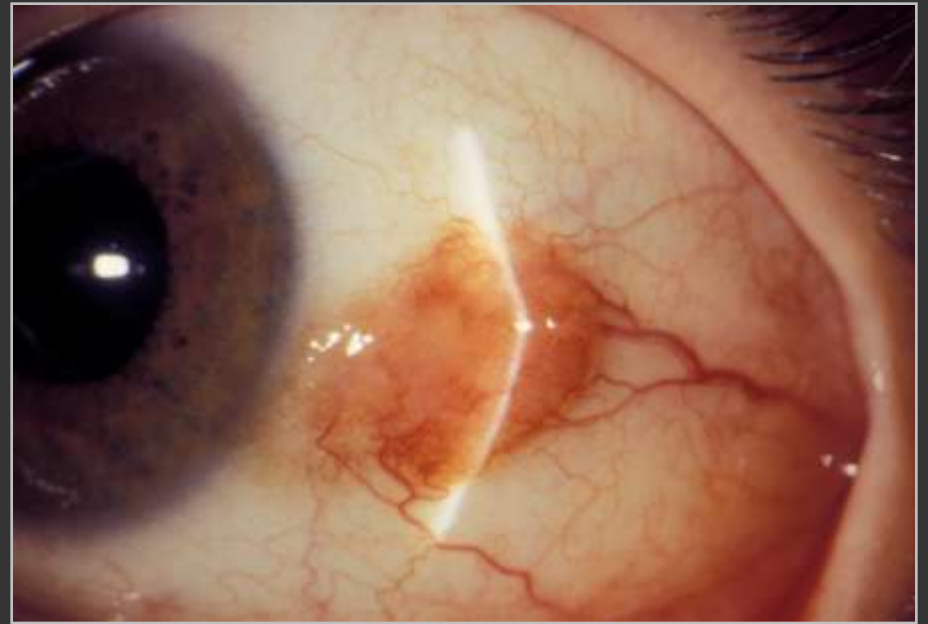
Malignant change is $< 1\%$



Nevus of the semilunar fold

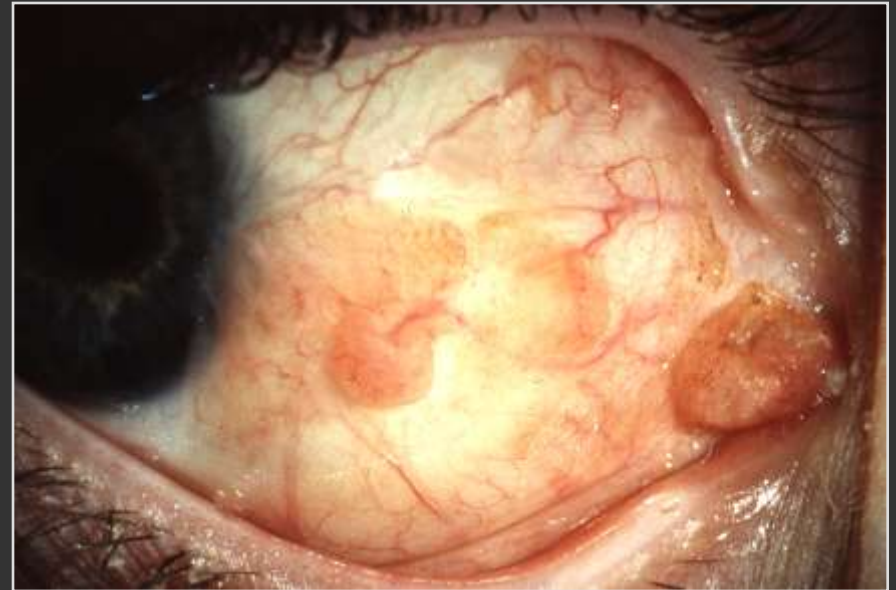
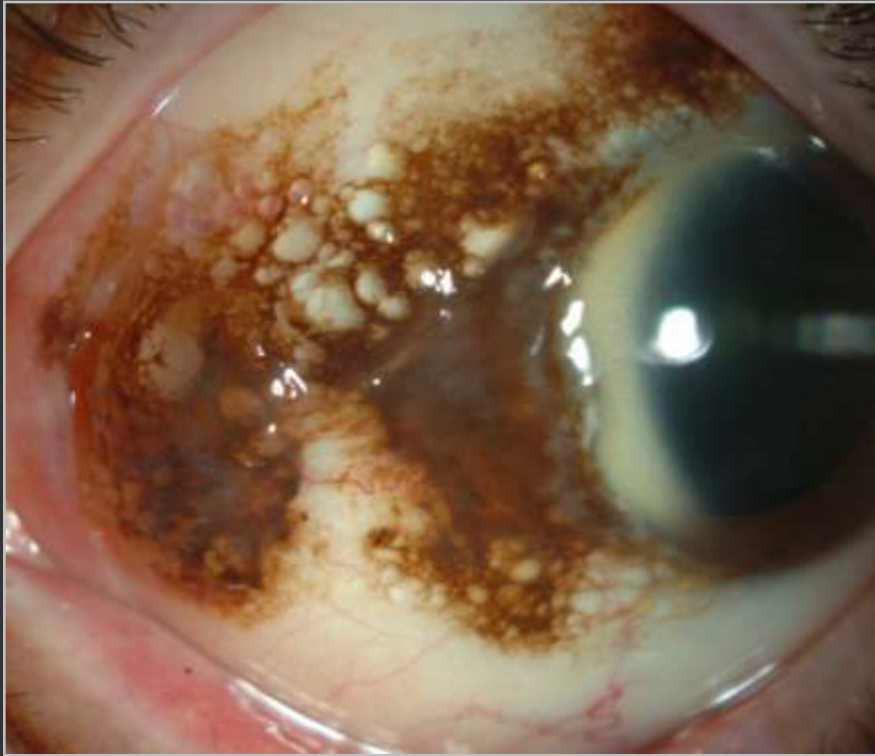


Nevus of the bulbar conjunctiva

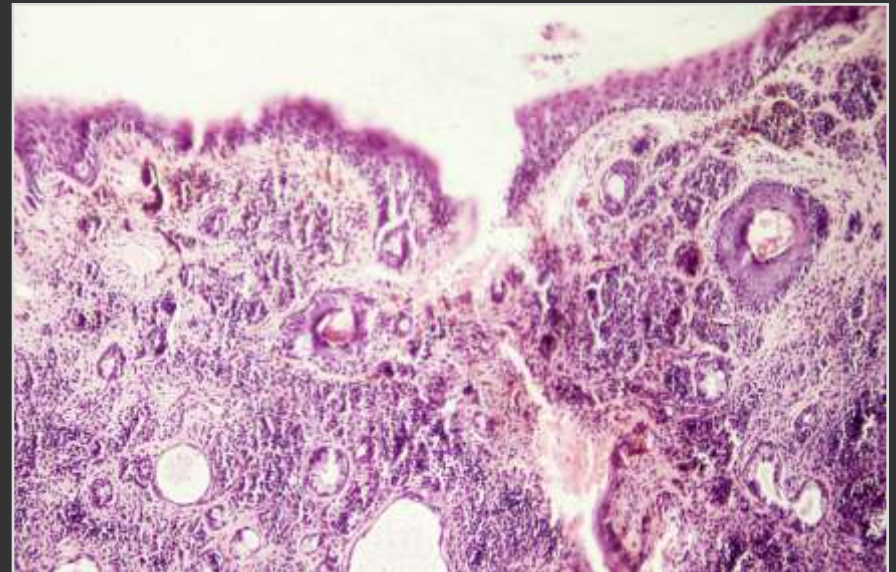


Nevus of the limbus

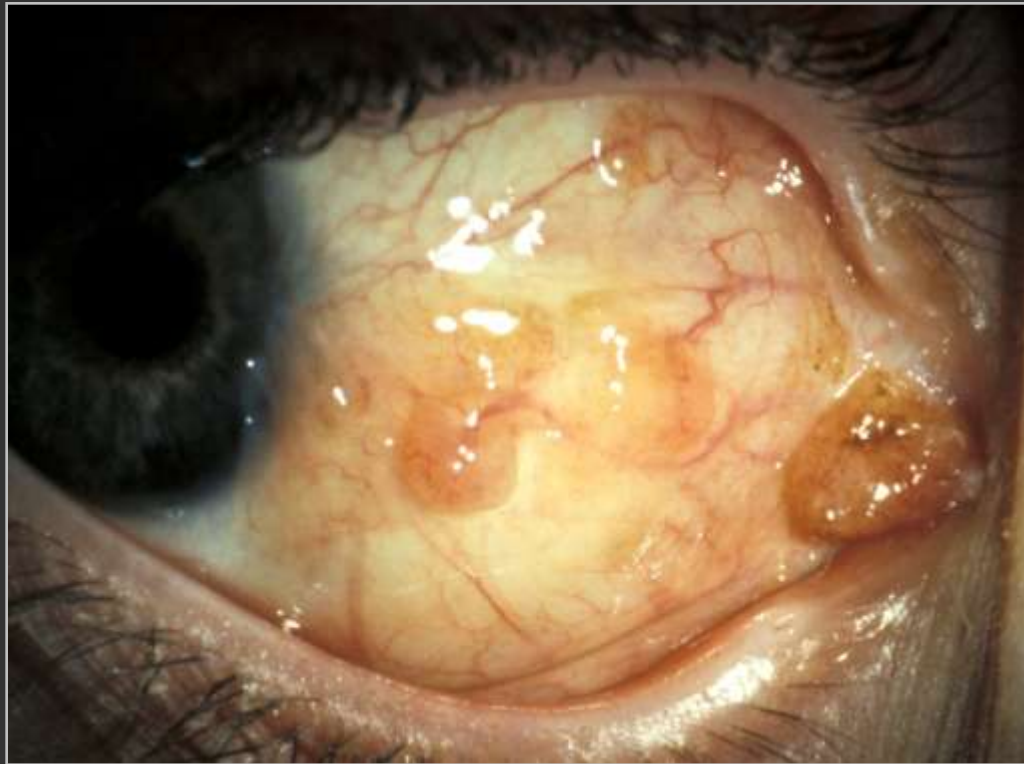
Congenital nevi



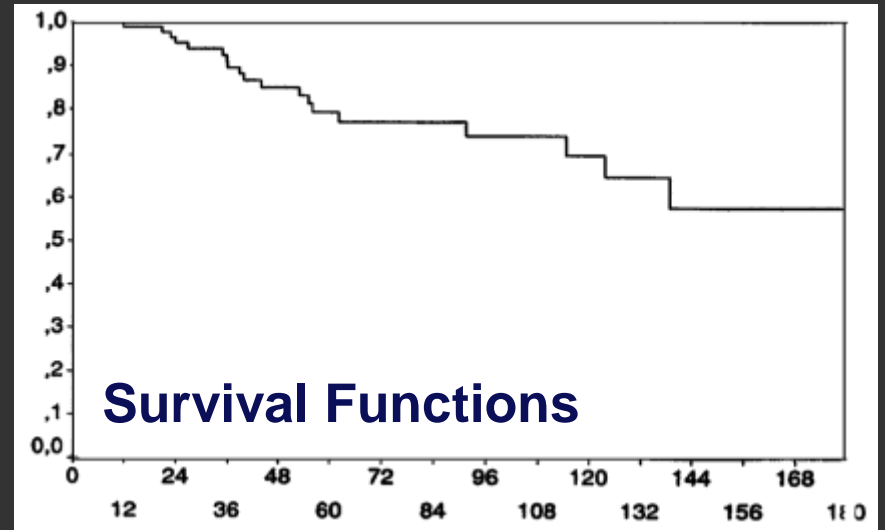
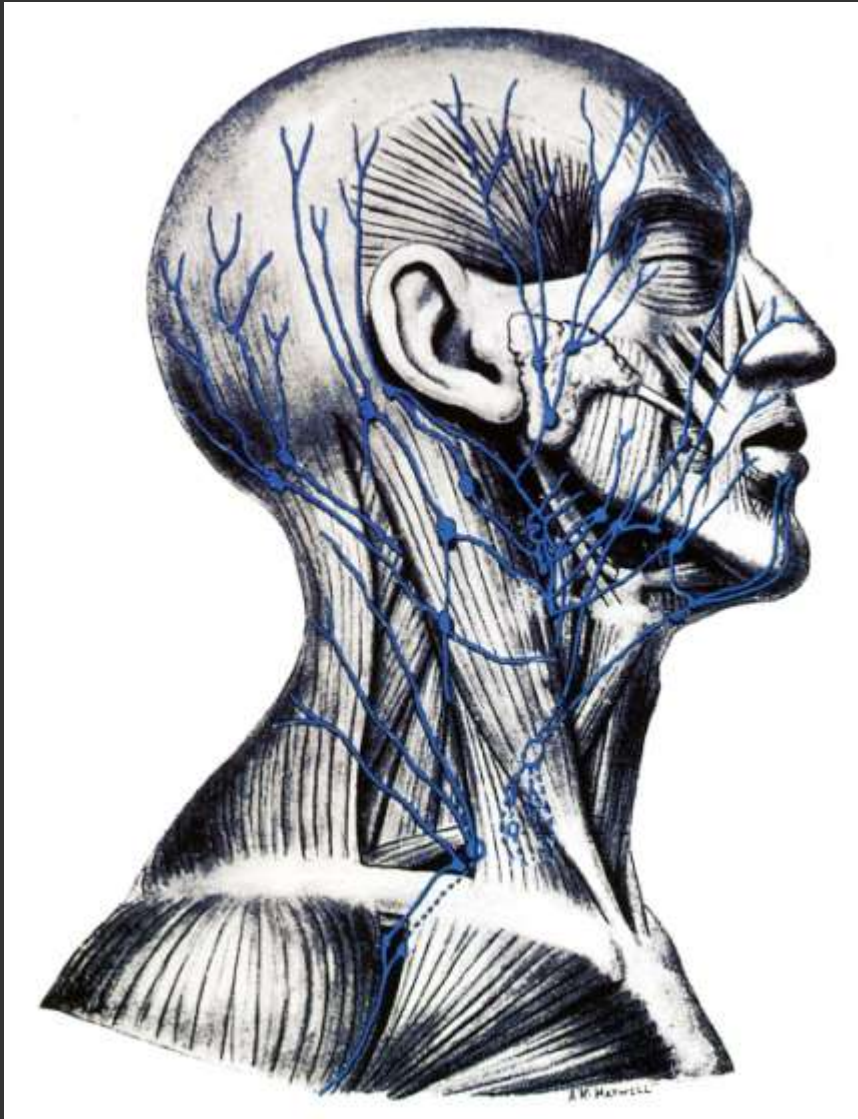
Compound or Sub-epithelial



Congenital nevi

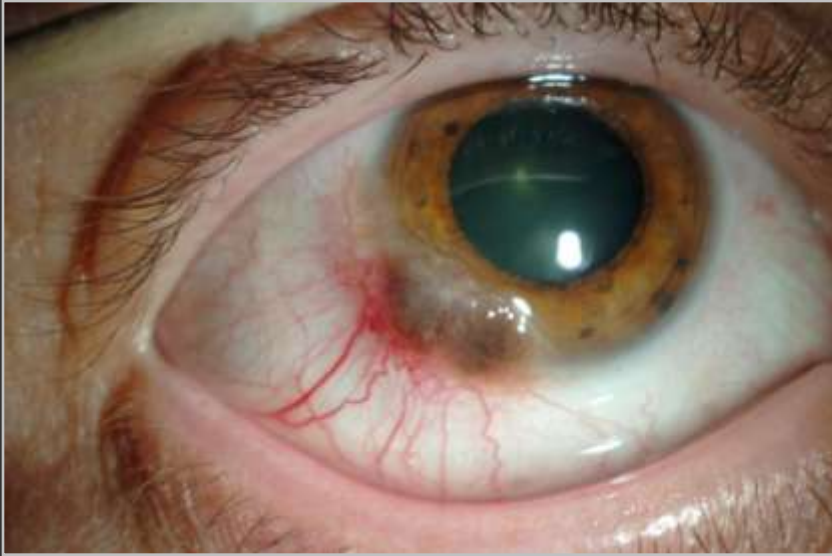


Conjunctival Melanoma

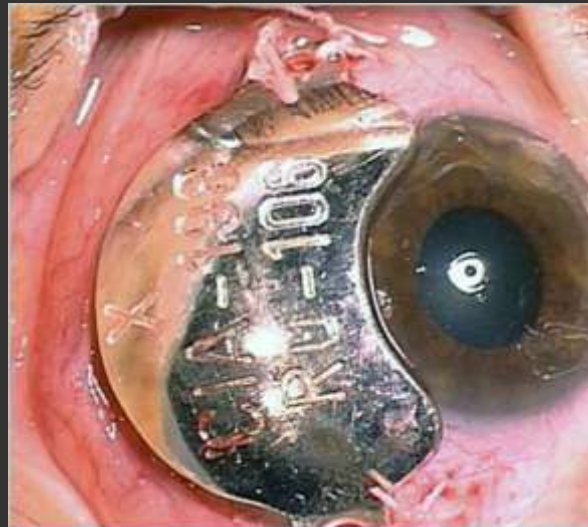
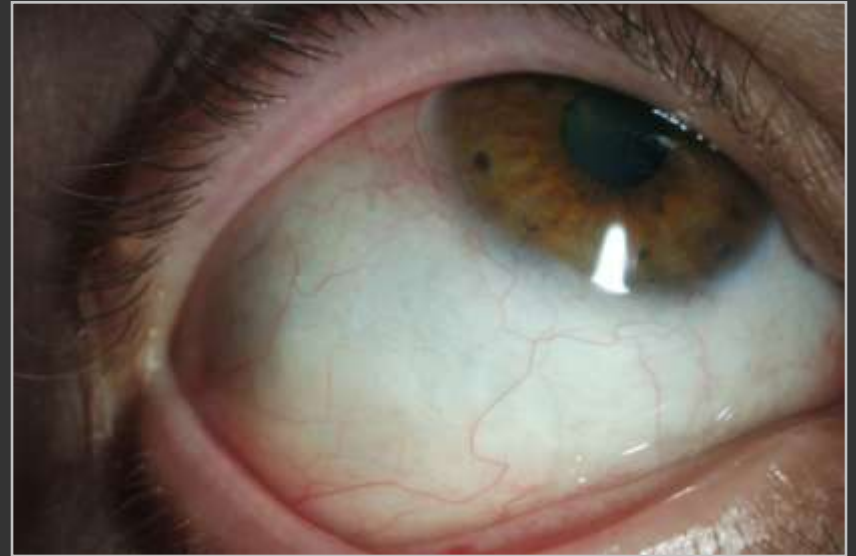


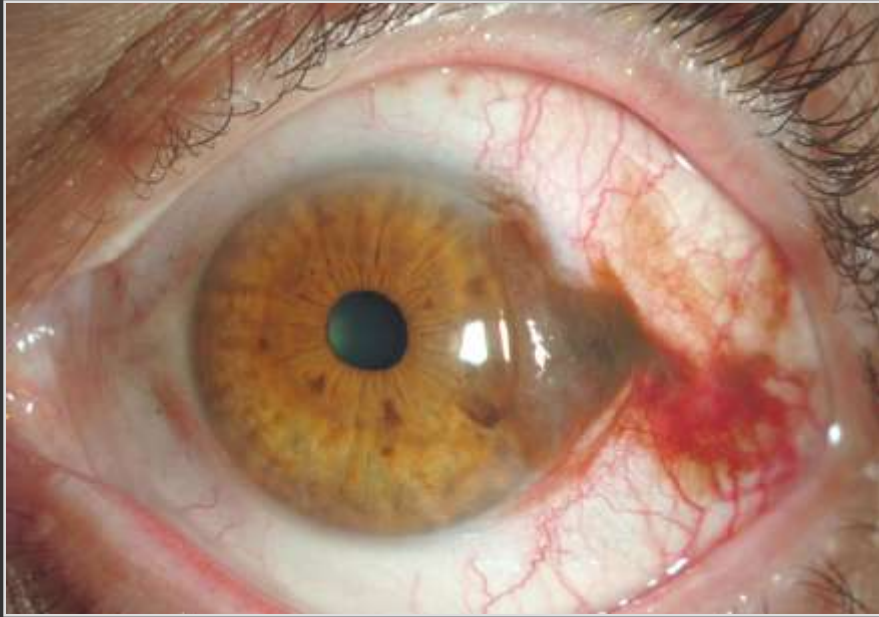
Invasion of the limbus and episclera

Surgical excision

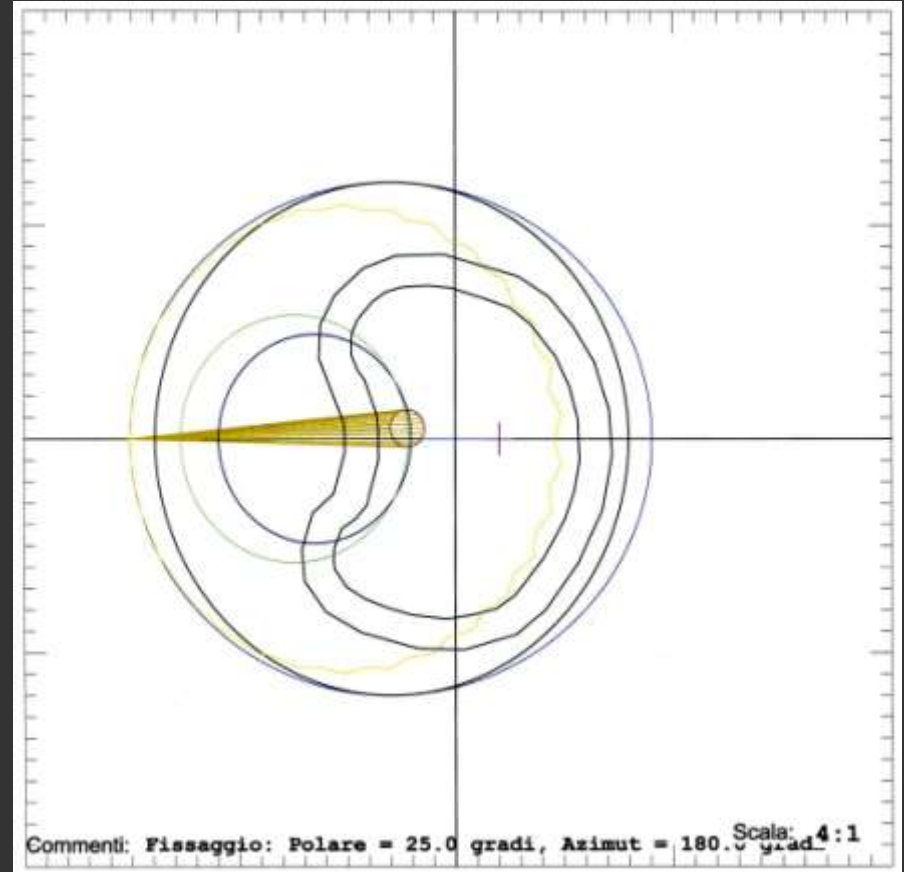


Beta Brachytherapy $^{106}\text{Ru}/^{106}\text{Rh}$



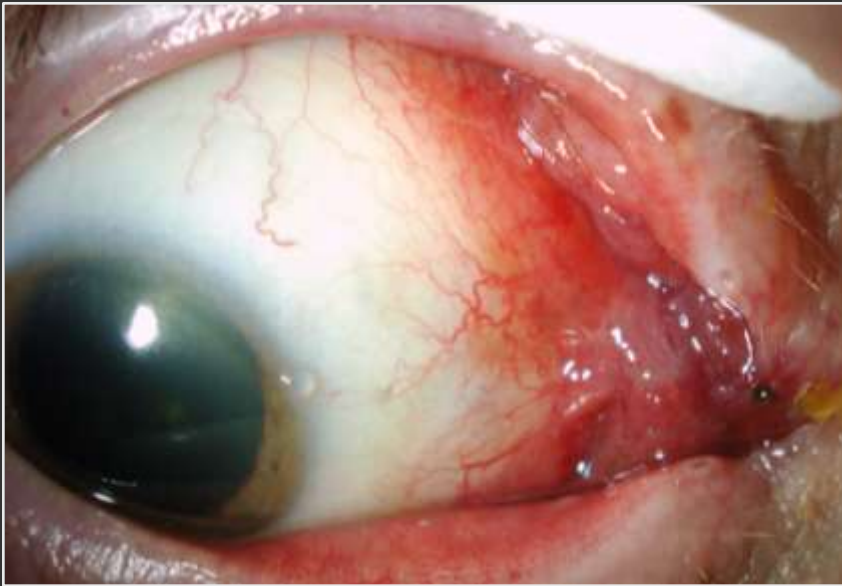


Invasion of the limbus and episclera



Surgical excision

Proton beam radiotherapy

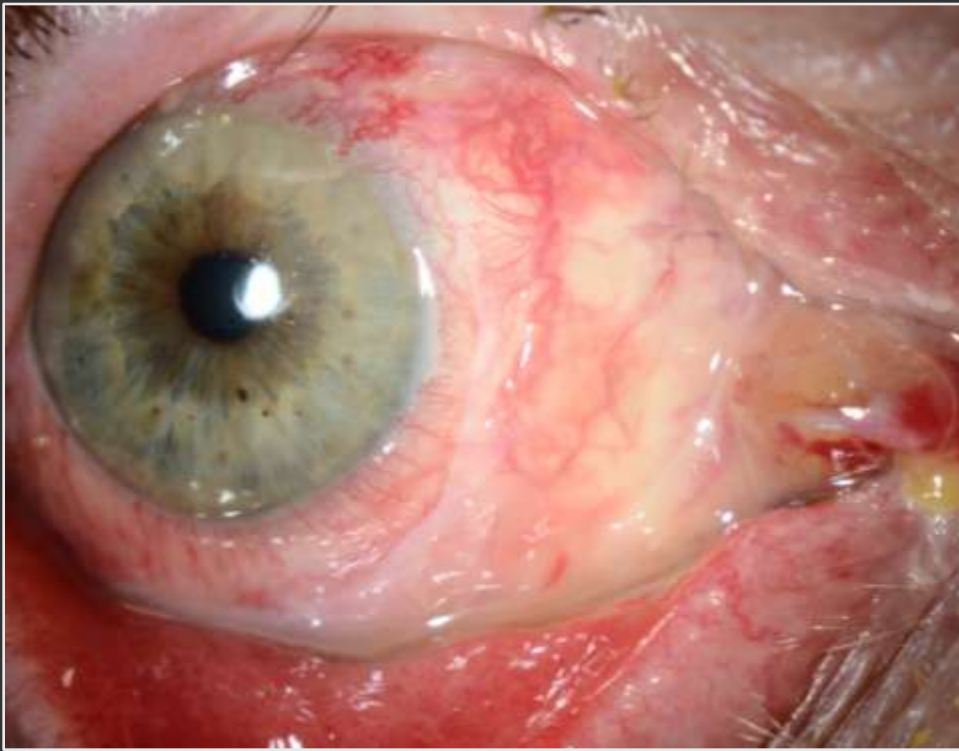


Melanoma of the conjunctiva

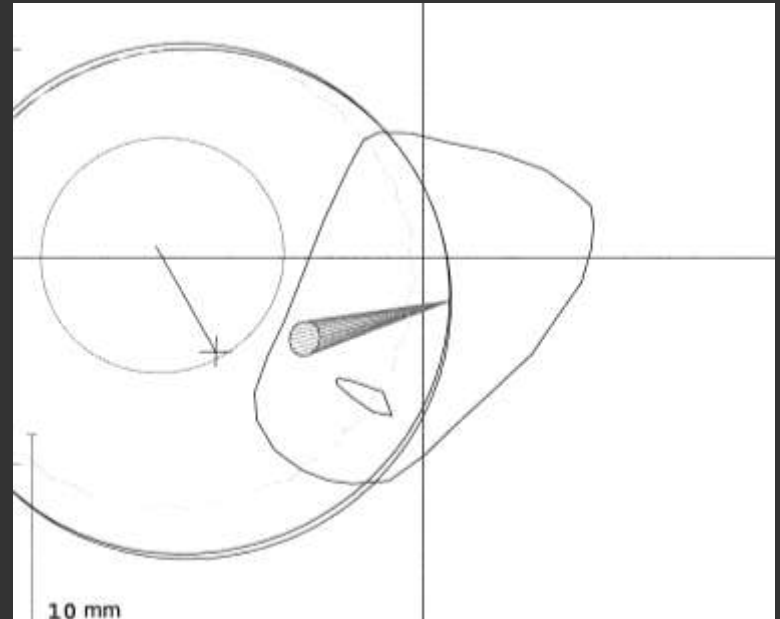


Invasion of the caruncle and lower fornix

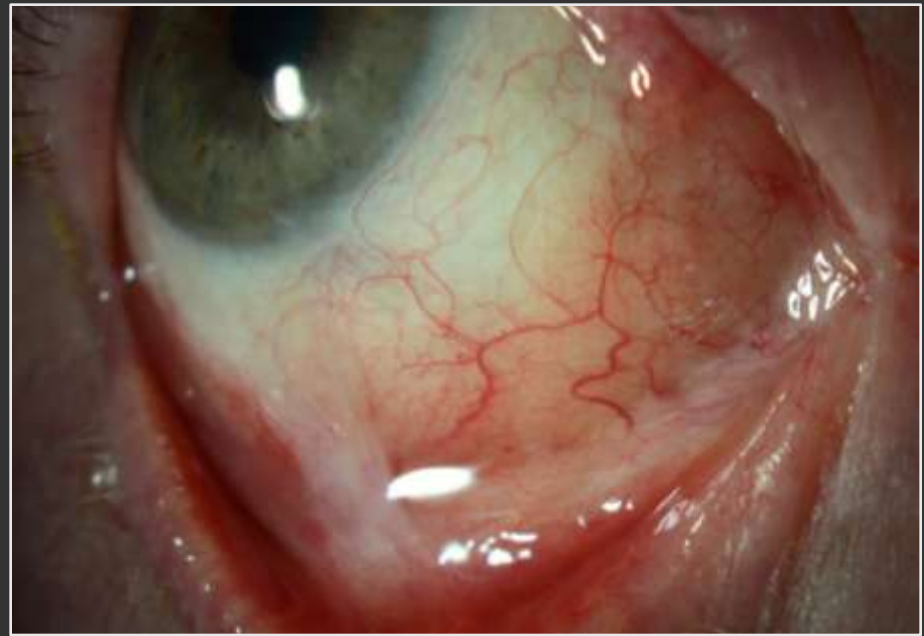
Proton beam radiotherapy



Dose 60 Gy in 4 fractions



Melanoma of the conjunctiva



Obs. period 2 years
Absence of recurrency

Conjunctival melanoma. Combined treatment

