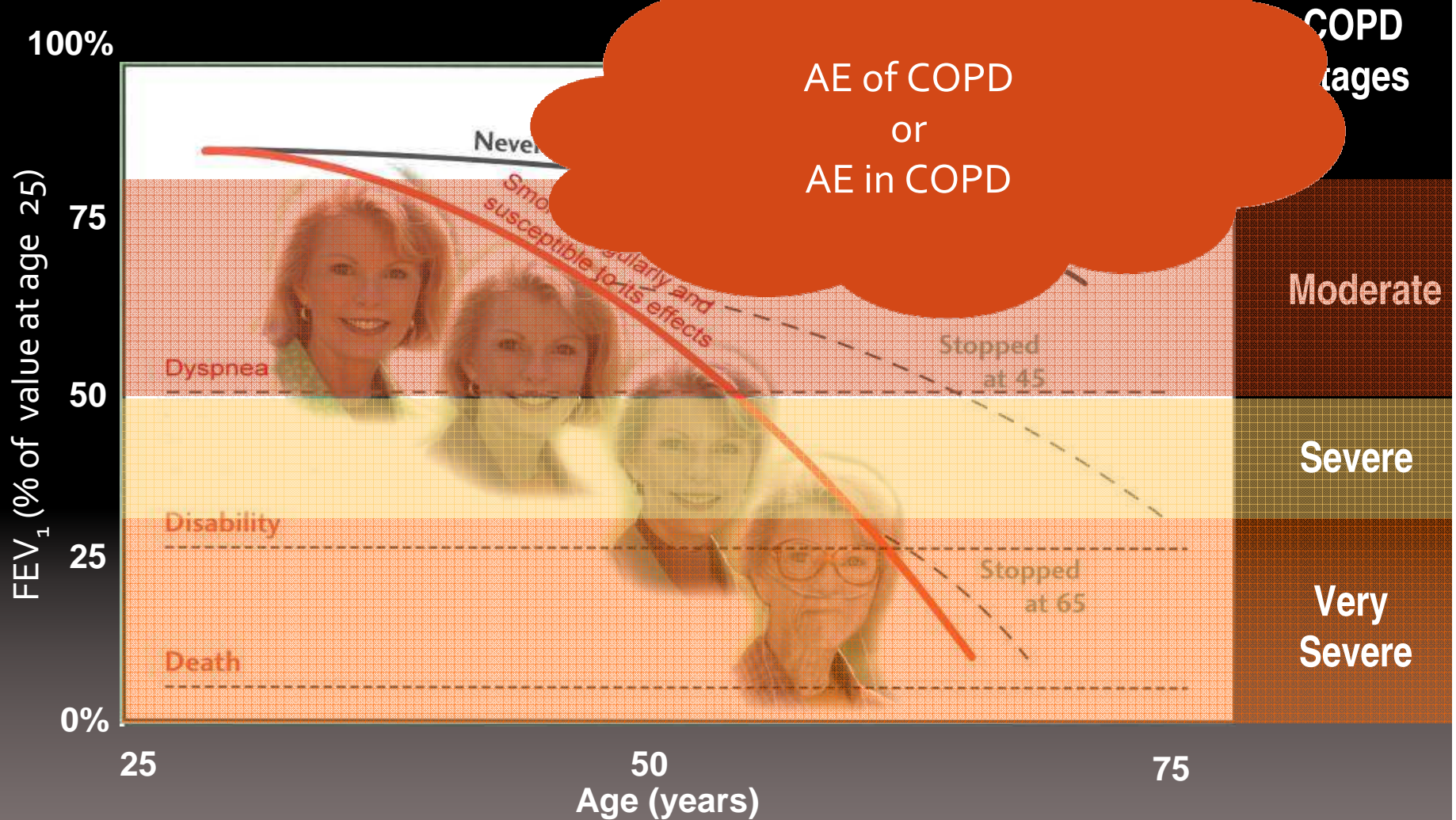




ΠΑΡΟΞΥΝΣΗ : ΤΟ "ΟΞΥ ΈΜΦΡΑΓΜΑ" ΤΟΥ ΧΡΟΝΙΟΥ ΑΠΟΦΡΑΚΤΙΚΟΥ

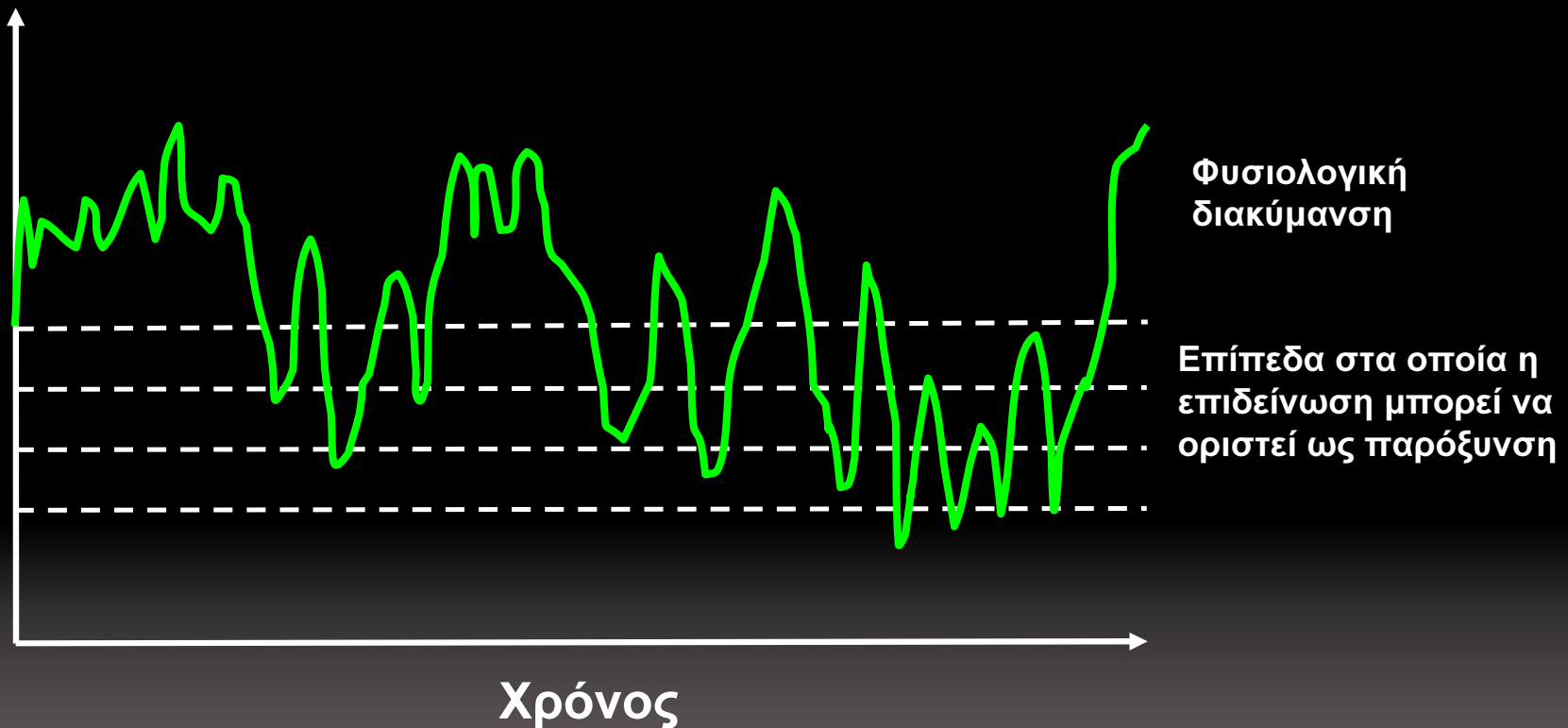
Νίκος Τζανάκης
Αναπληρωτής Καθηγητής
Ιατρική Σχολή, Πανεπιστήμιο Κρήτης

ΧΑΠ: Η φυσική της εξέλιξη



Adapted from Fletcher C and Peto R, BMJ 1977; 1:1645-1648. Imagery courtesy O'Donnell D

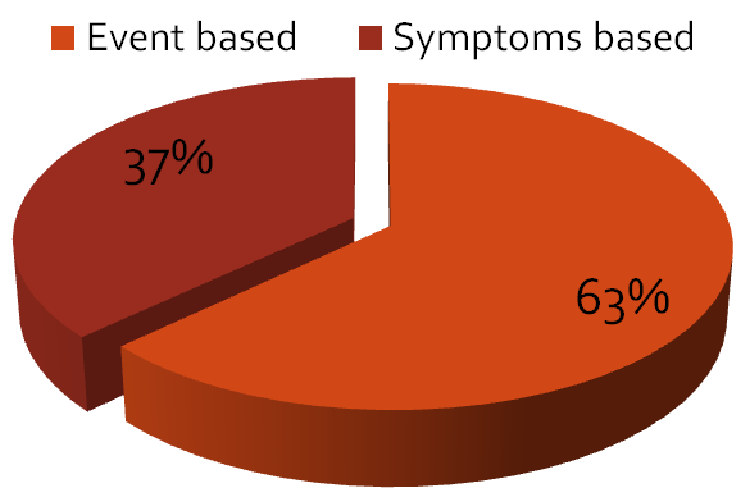
Ορισμός παρόξυνσης ΧΑΠ



Επιμένουσα επιδείνωση της κατάστασης τους ασθενούς από την σταθερή κατάσταση, που διαφοροποιείται από την συνήθη καθημερινή κατάσταση και που είναι οξεία απαιτώντας αλλαγή στην θεραπευτική αντιμετώπιση

Strengths and weaknesses of the definition of COPD exacerbation in the most common international and national guidelines

Guidelines	Symptom and/or event based	Cause	Severity stage	Limitations	Advantages
GOLD	Mainly symptom based	Event based	Symptoms based	Exacerbations are not well defined, clinical knowledge is not always known, underlying cause is not always clear	Easily used in clinical practice
CTS	Very similar to the GOLD definition			LD definition	Easily used in clinical practice
ATS/ERS	Very similar to the GOLD definition			LD definition	Provide a simple and clear definition of different degrees of severity of a COPD exacerbation
BTS	Very similar to the GOLD definition, but slightly more loose	-	-	Same as for the GOLD definition	Easily used in clinical practice



Clinical empiricism with very little scientific support

✓ Event based or Symptoms based

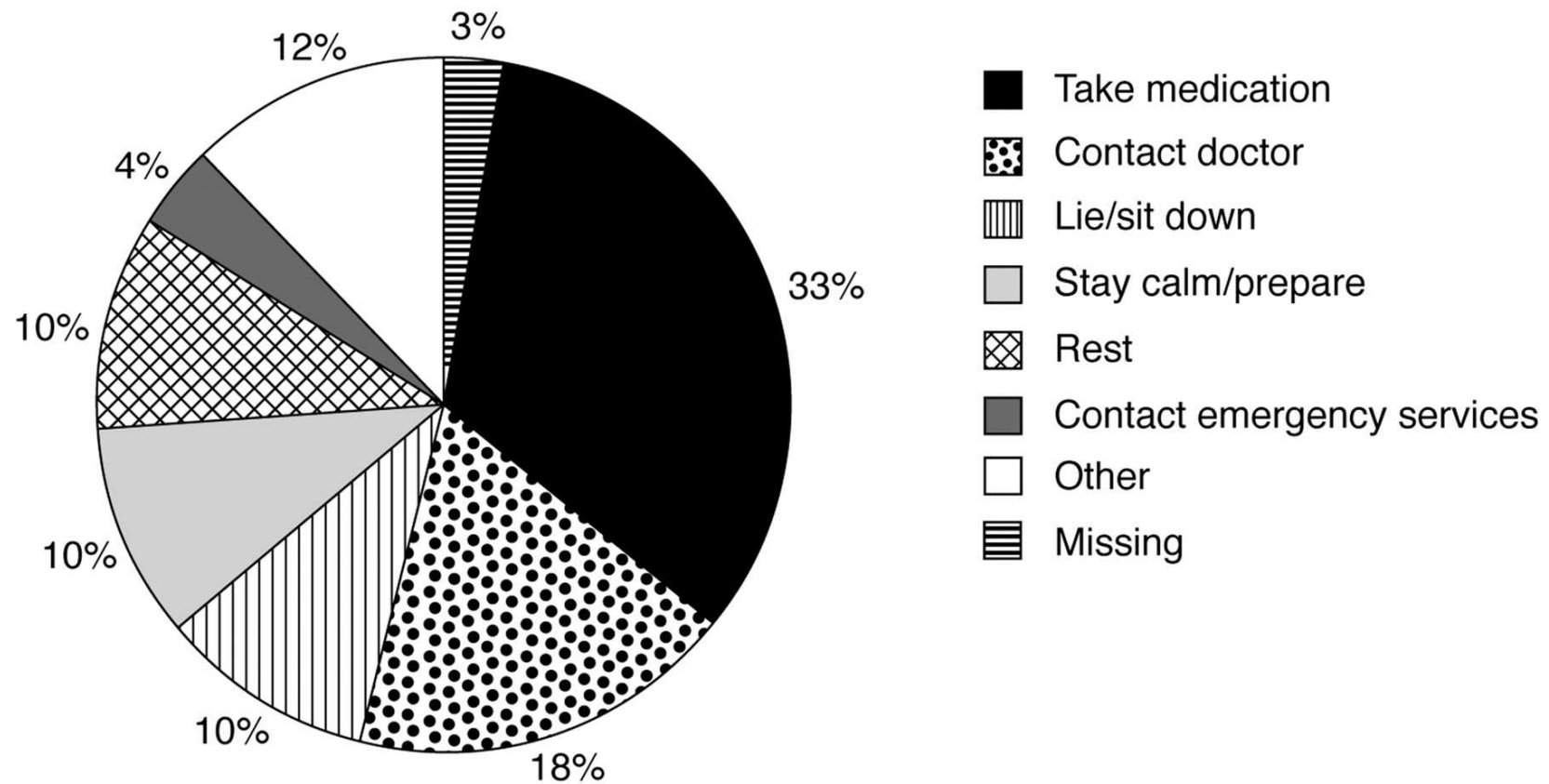
✓ AECOPD of COPD or AECOPD in COPD

✓ Different definitions produce different numbers



Το μοναδικό παράδειγμα
οξείας κατάστασης ασθένειας
που ο ορισμός του οδηγεί σε
τόση σύγχυση

Patients' reported reactions at the onset of an exacerbation of COPD (n = 125).



Kessler R et al. Chest 2006;130:133-142

ΑΕCOPD

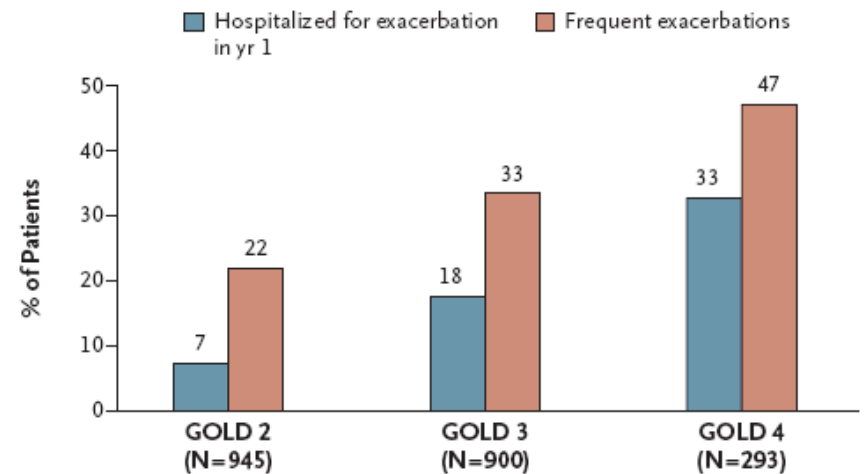
- Η σημαντικότερη αιτία θανάτου
 - Επιταχύνει την εξέλιξη της νόσου
 - Μειώνει δραματικά την ποιότητα ζωής
 - Αυξάνει την χρήση των υπηρεσιών υγείας
 - Αυξάνει σημαντικά το κόστος της νόσου
-
- *Πρόληψη: Πρωταρχικός σκοπός της θεραπείας*
 - *Πρωτεύον ερευνητικό σημείο έκβασης στις RCTs*

Why AE is the COPD stroke

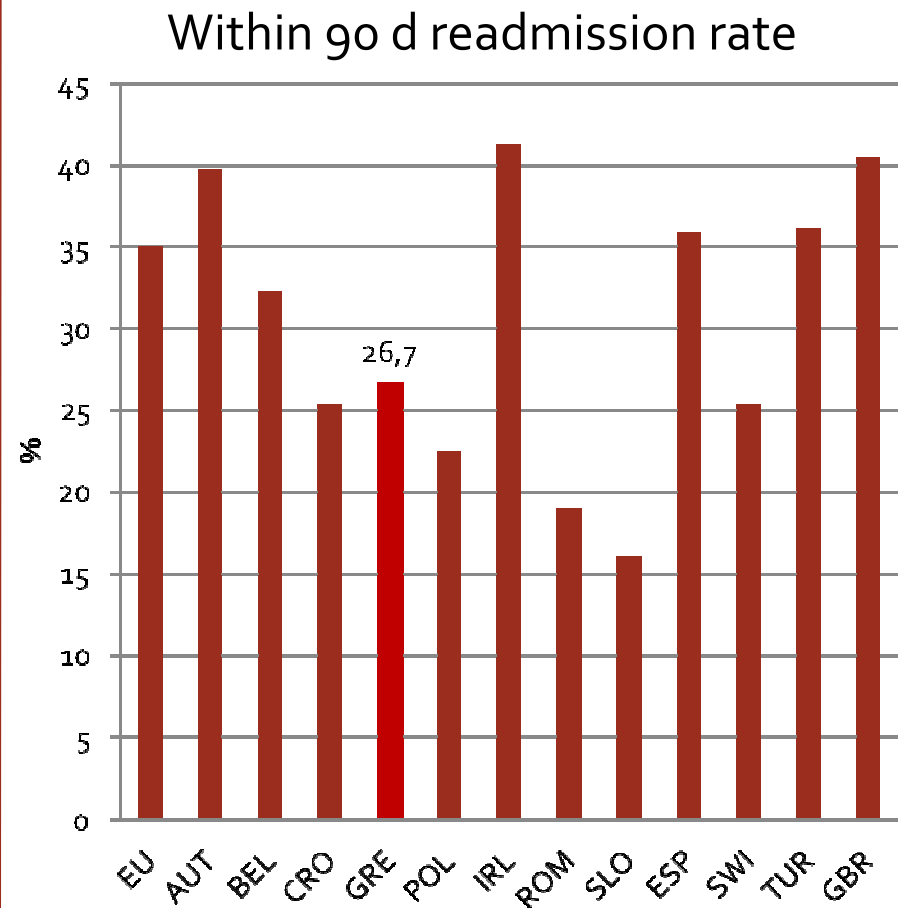
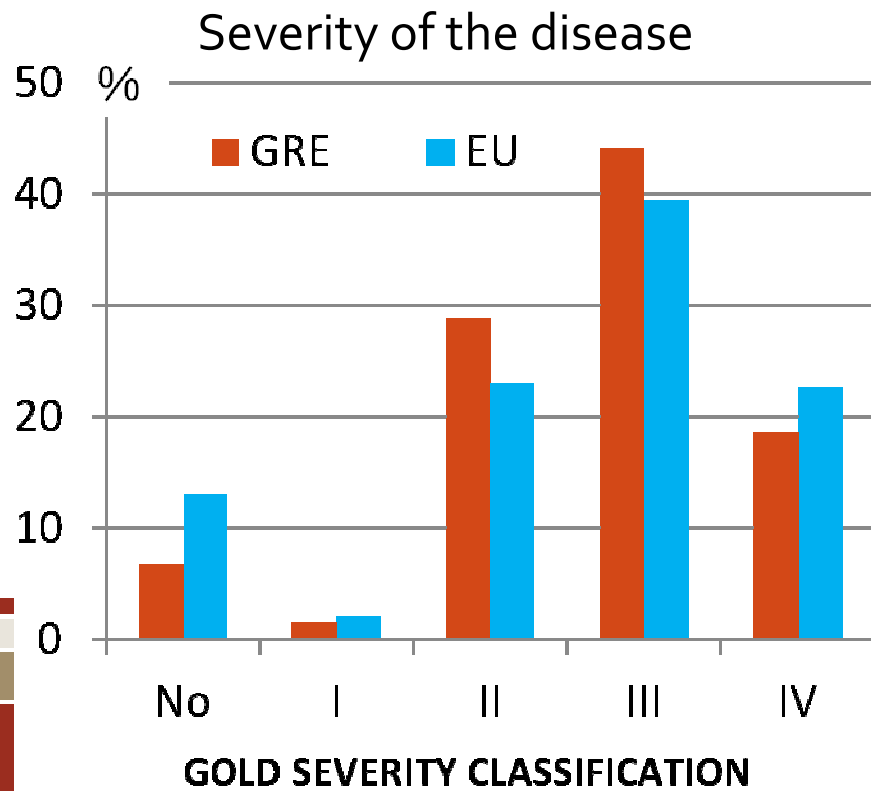
- Semicolon or disease's full-stop period
- Triggering a catastrophic cascade
- Relapsing event
- Overwhelming
- Killer
- Emergency

Severity associated but even in stage

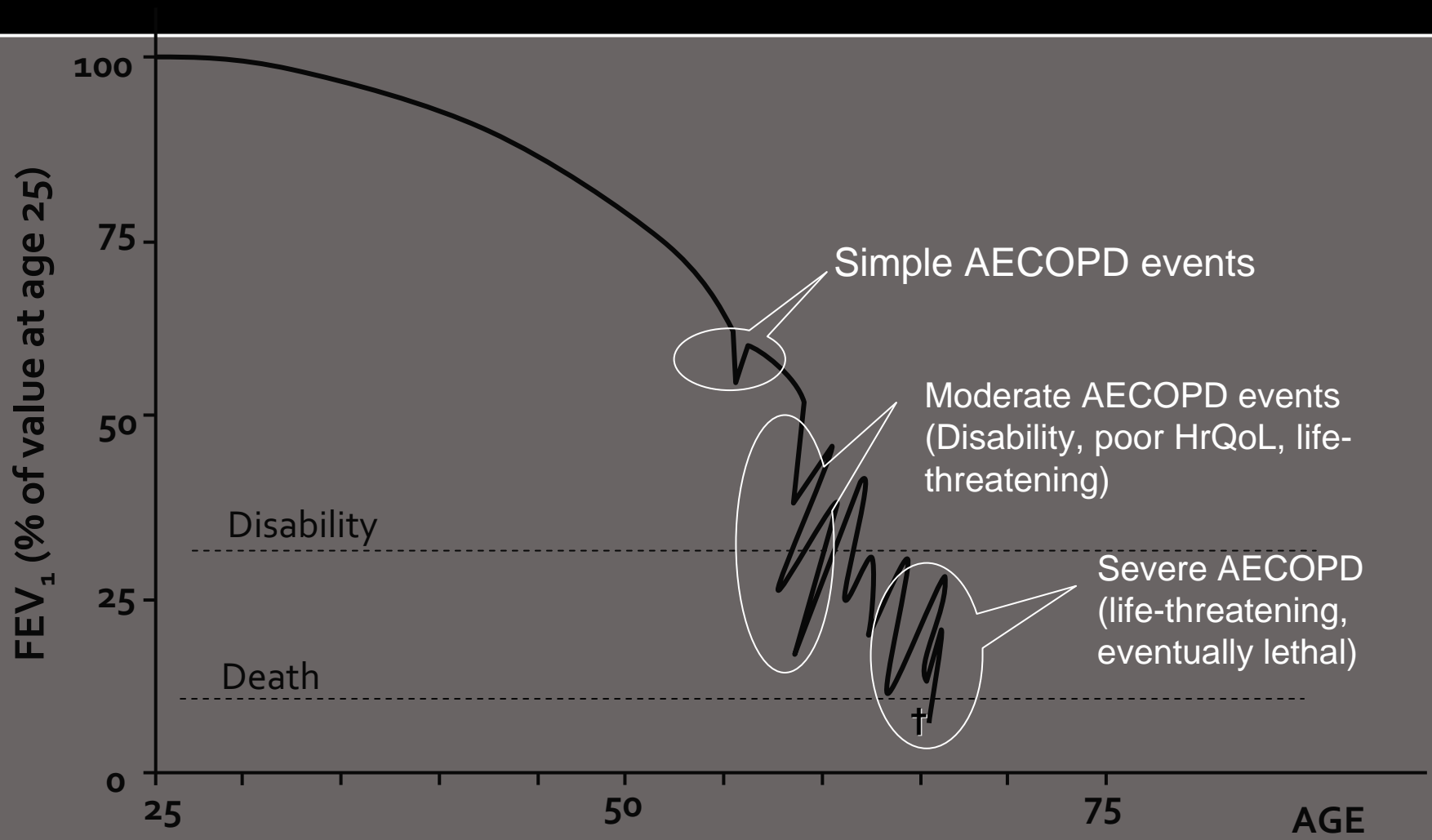
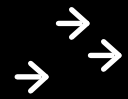
Association of Disease Severity with the Frequency and Severity of Exacerbations during the First Year of Follow-up in Patients with Chronic Obstructive Pulmonary Disease.



OUTCOME: ERSCOPDaudit 2011



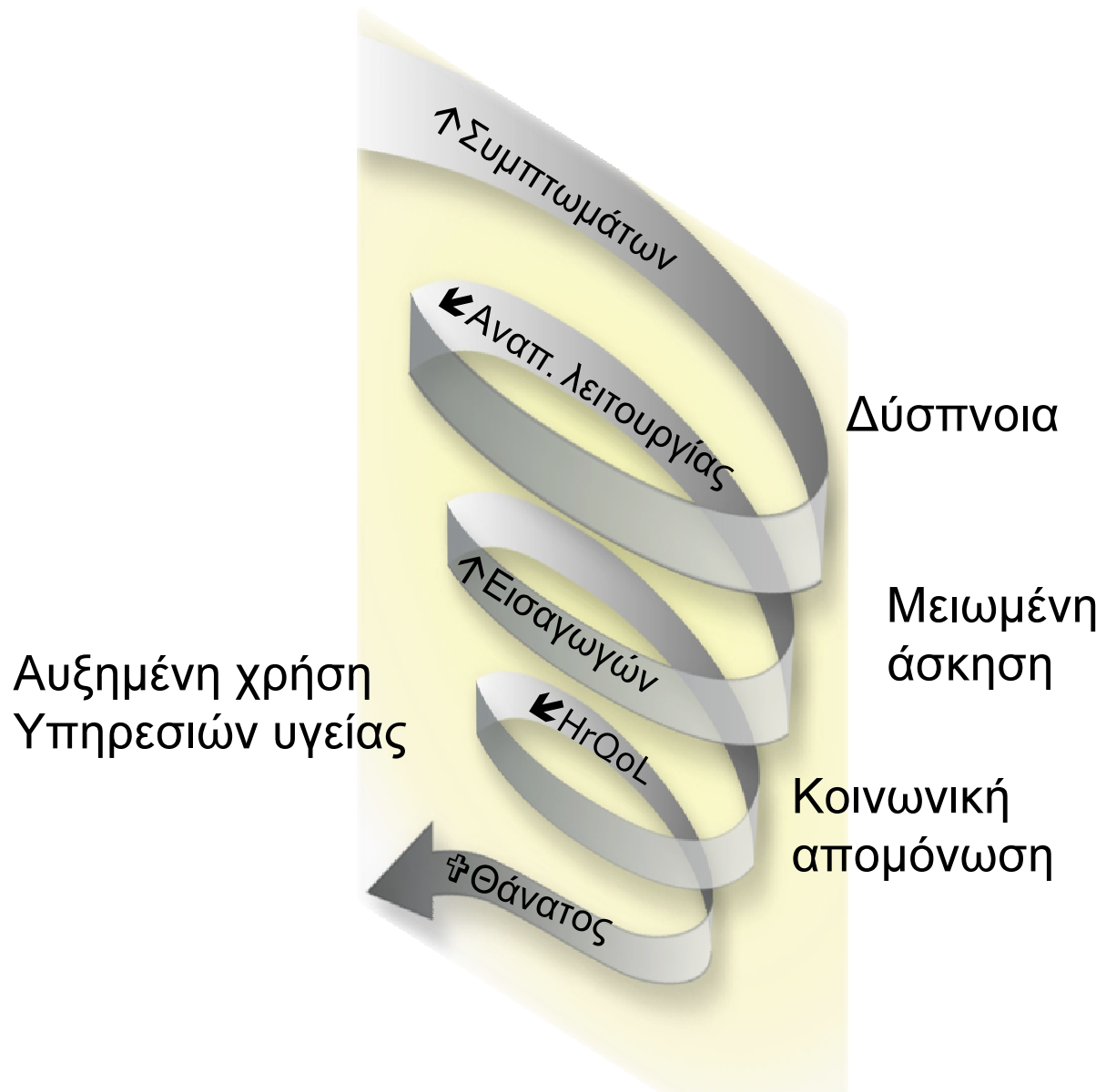
Fletcher & Peto diagram modified



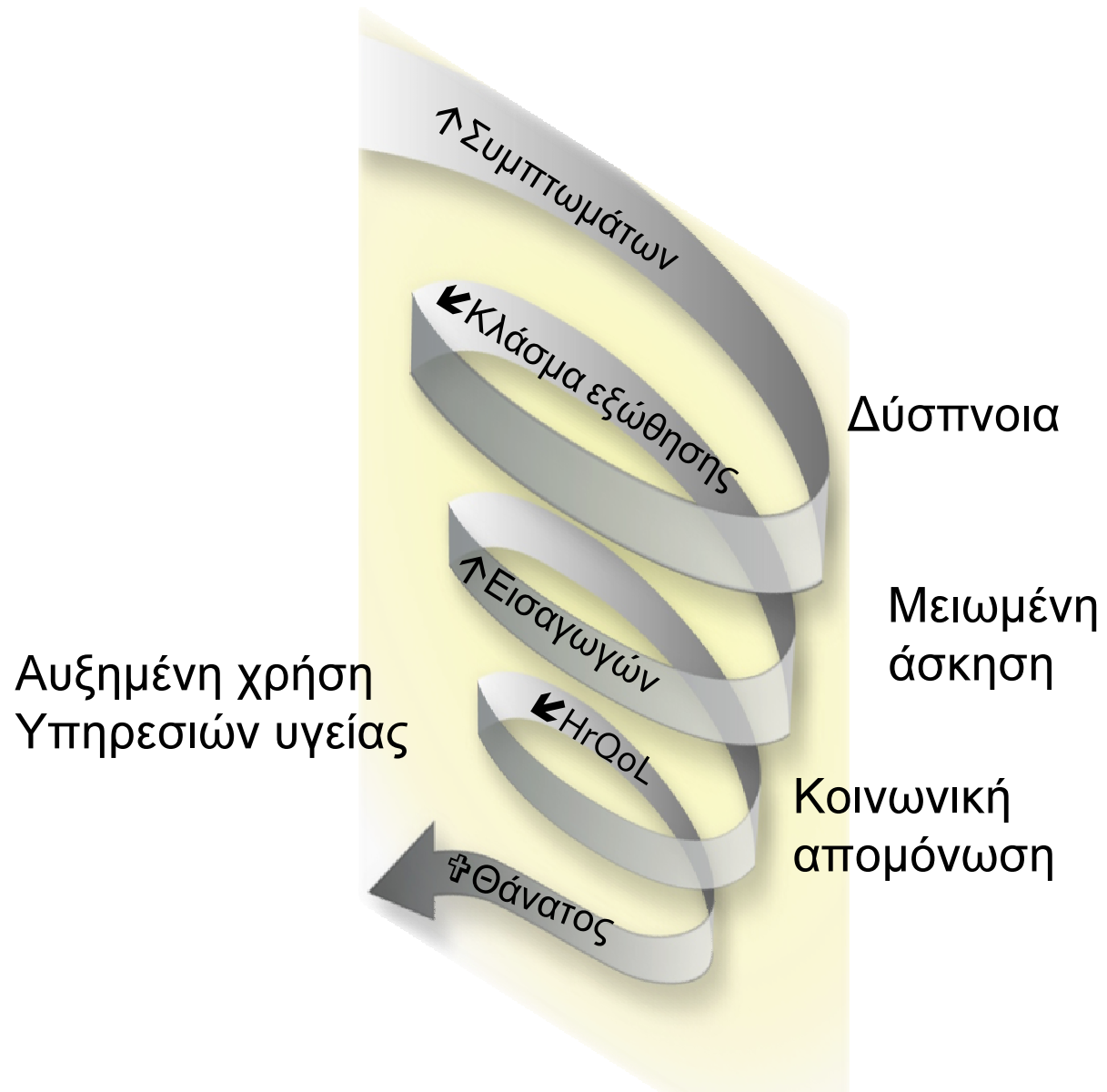
Why AE is the COPD stroke

- Semicolon or disease's full-stop period
- Triggering a catastrophic cascade
- Relapsing event
- Overwhelming
- Killer
- Emergency

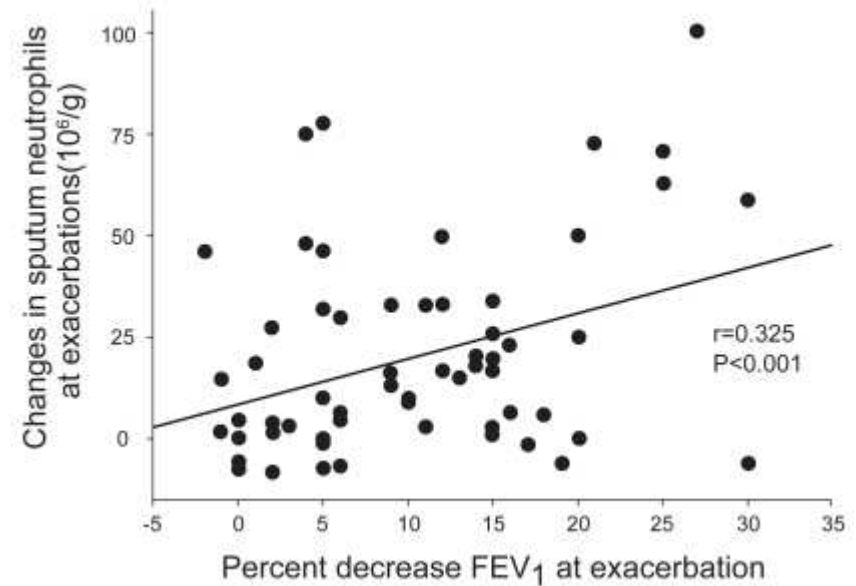
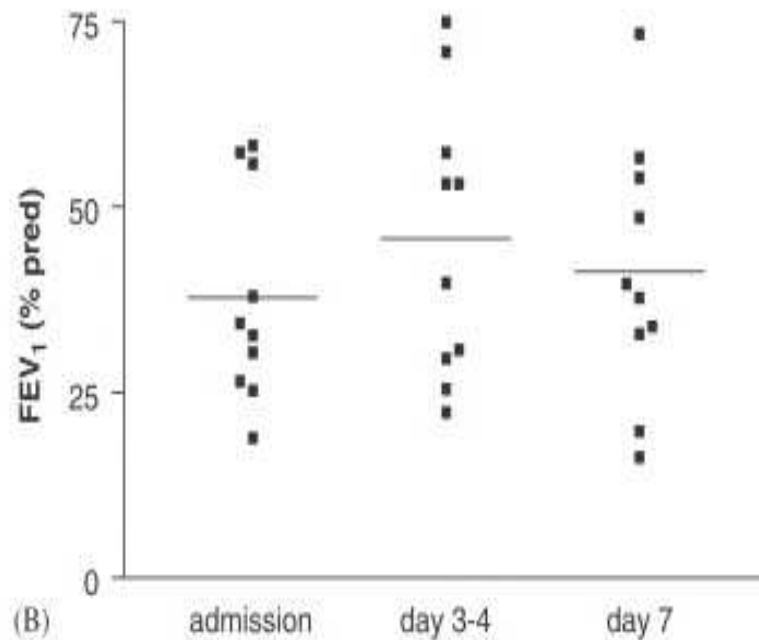
Παρόξυνση ΧΑΠ



|| Οξύ Έμφραγμα:



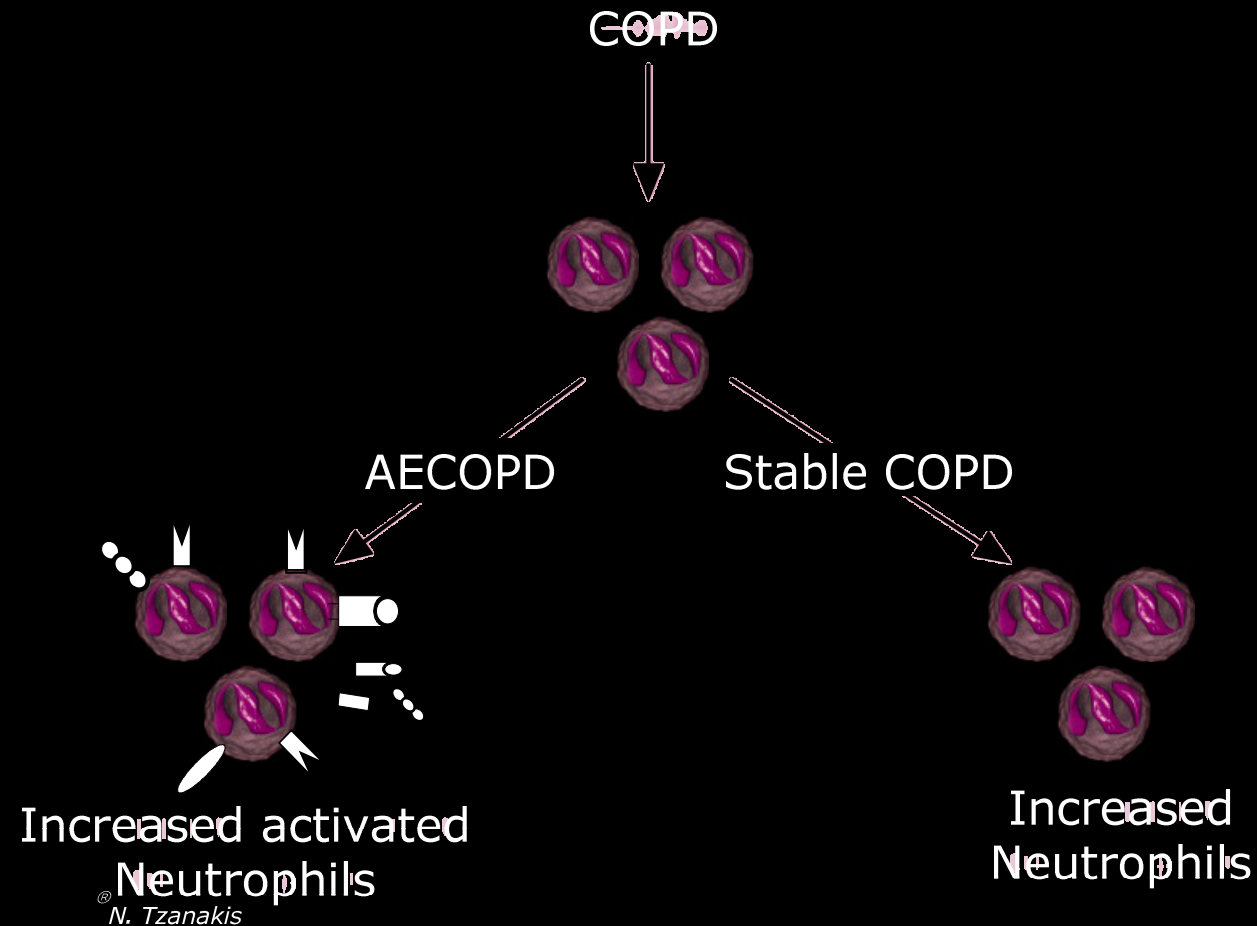
AECOPD related acceleration of inflammation



Oudijk et al Respiratory Medicine 2006

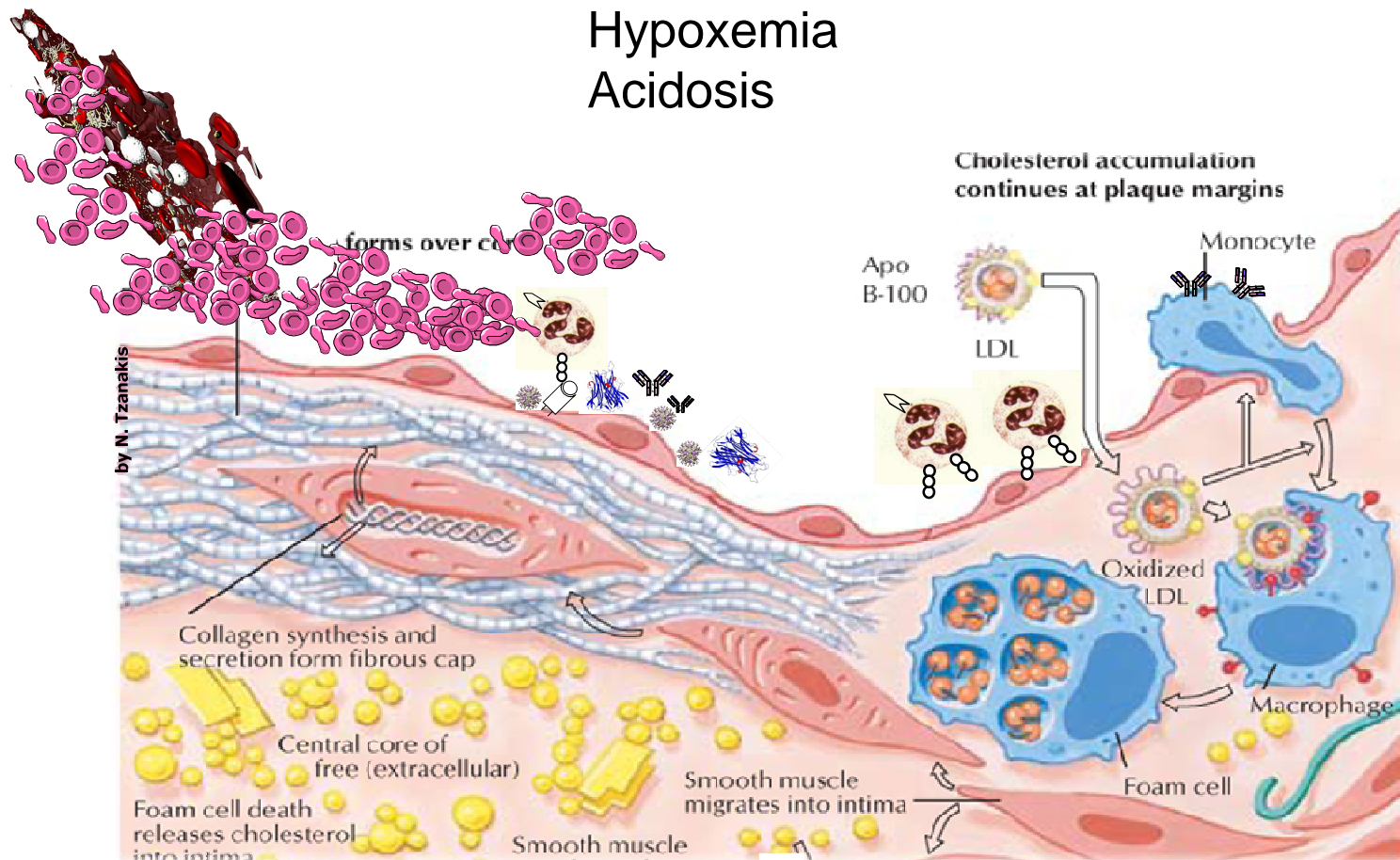
Papi et al AJCCM 2006

Systemic inflammation in unstable COPD



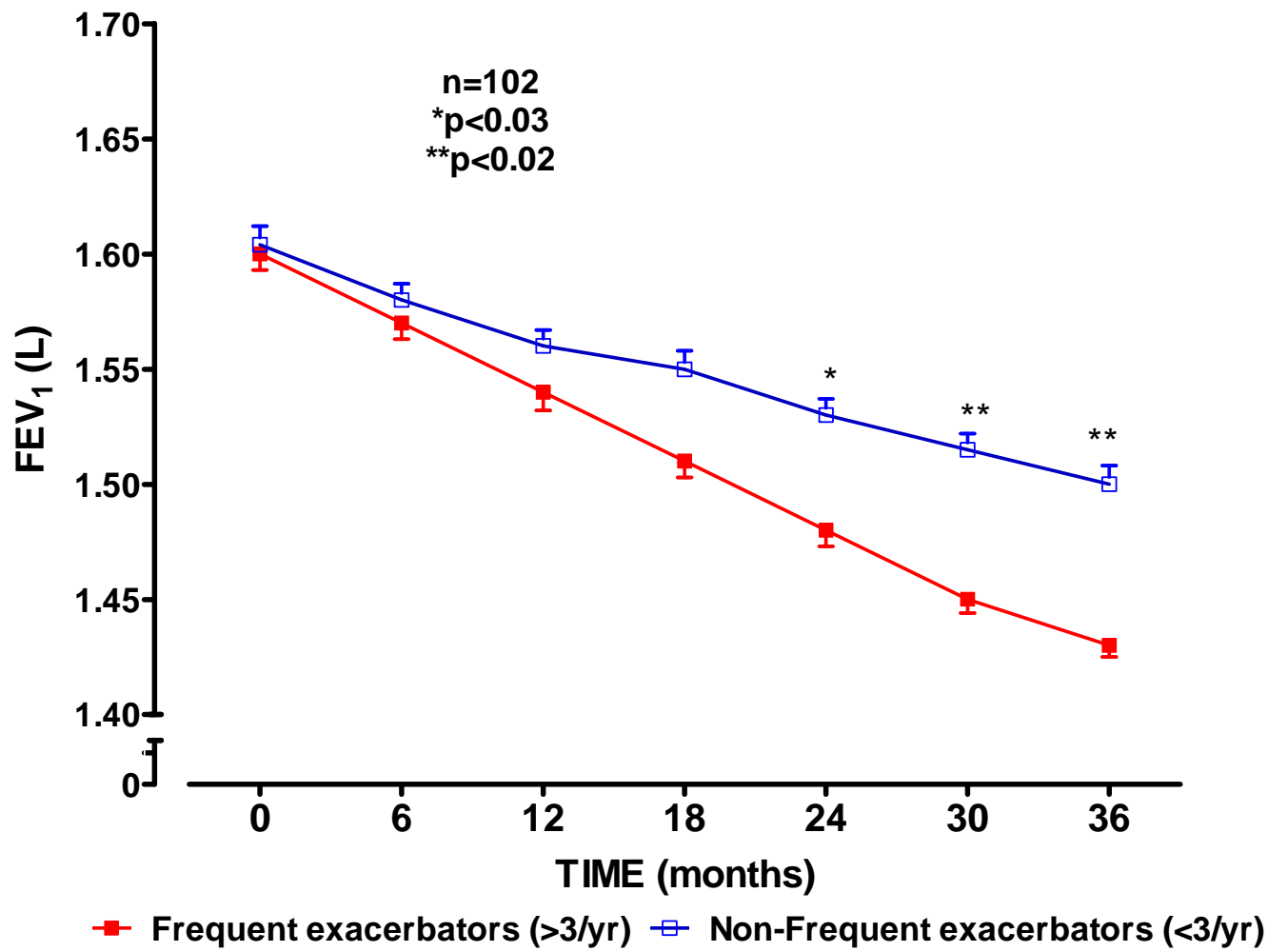
Unstable COPD-induced priming of peripheral neutrophils

AECOPD: Triggering endothelium damage





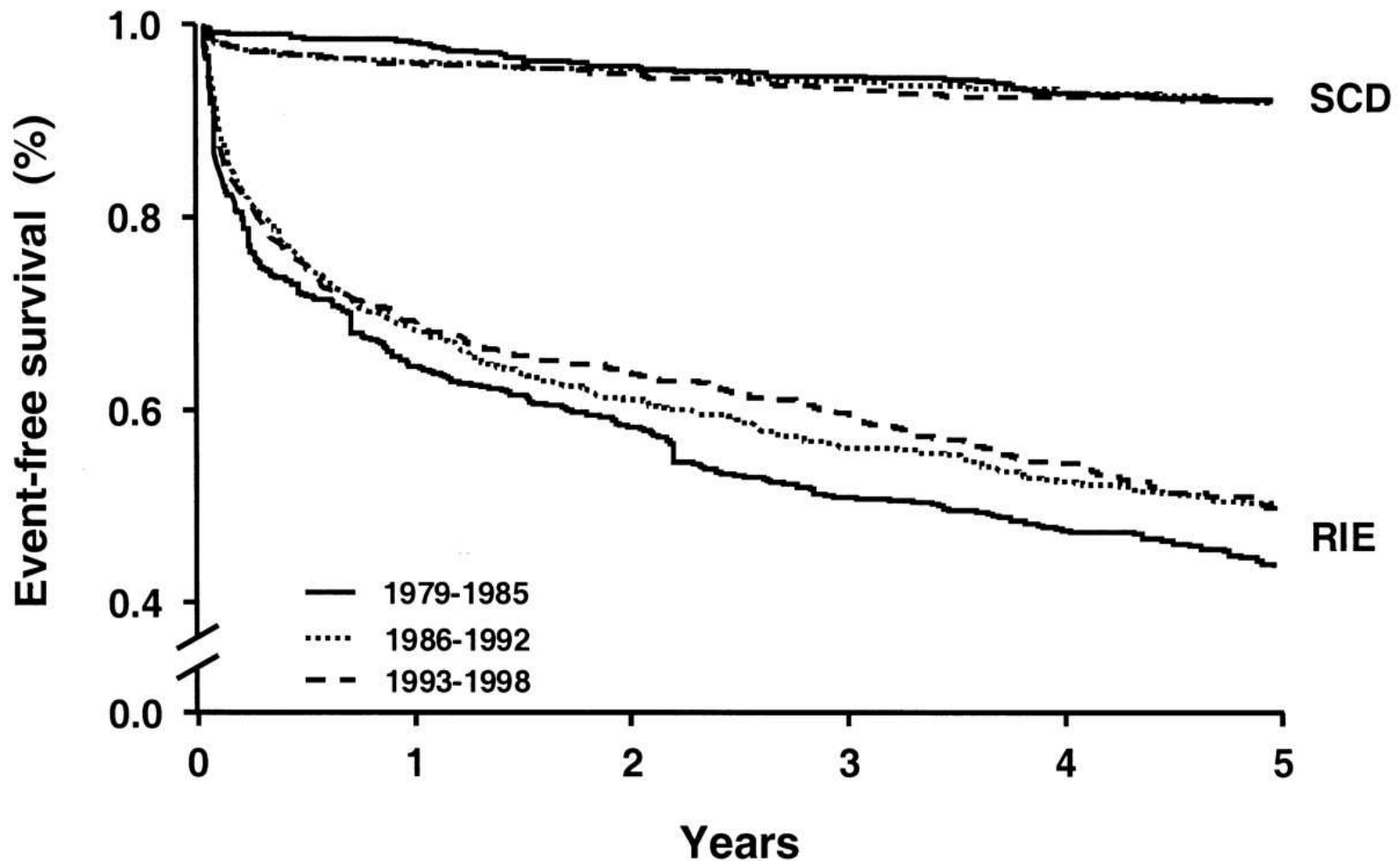
ΧΑΠ: Συχνοί παροξυσμοί (Makris et al *Respiratory Medicine 2006*)



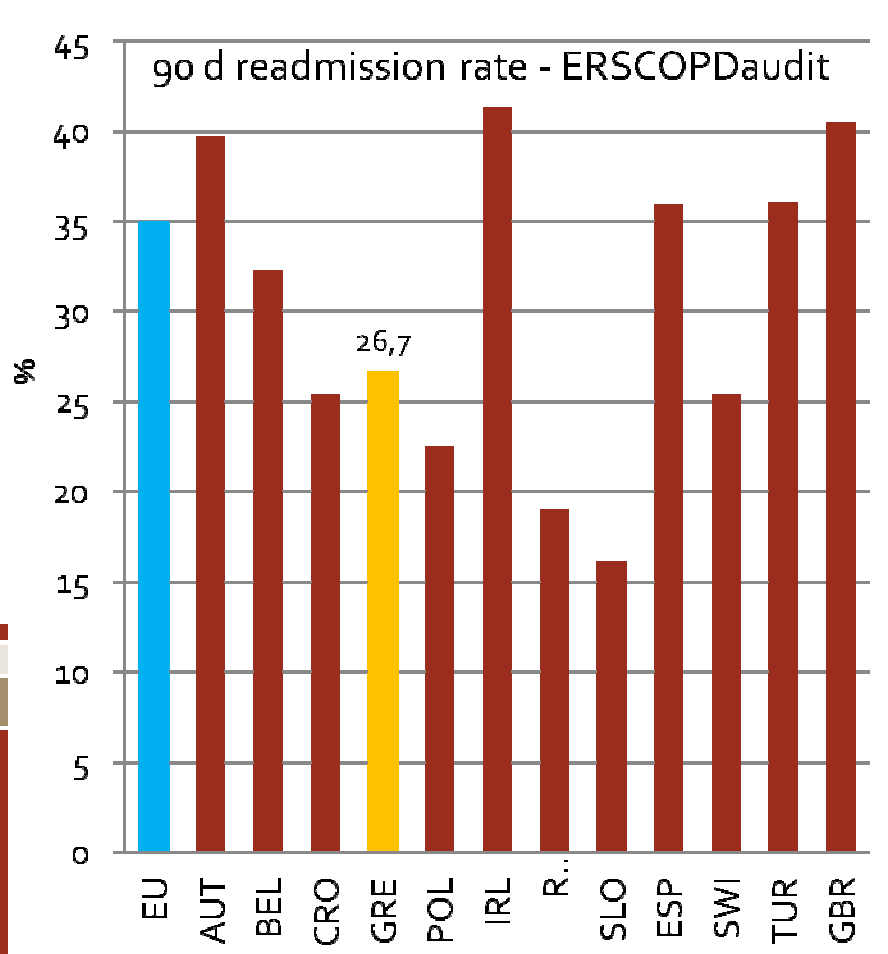
Why AE is the COPD stroke

- Semicolon or disease's full-stop period
- Triggering a catastrophic cascade
- Relapsing event
- Overwhelming
- Killer
- Emergency

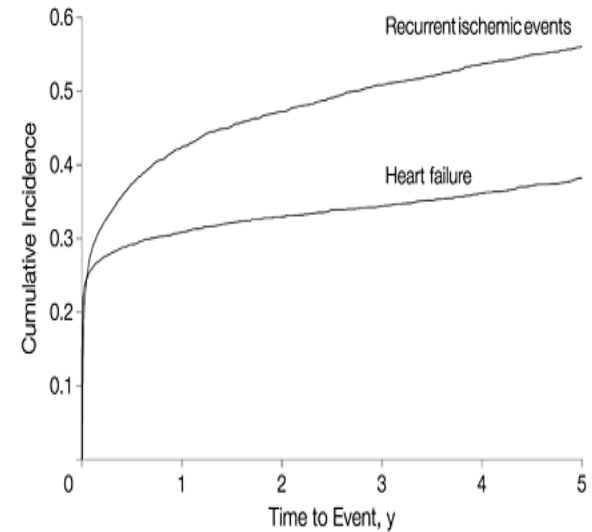
Survival-free rate of sudden cardiac death (SCD) and recurrent ischemic events (RIE) after myocardial infarction, by time, Olmsted County, Minnesota. p for SCD = 0.75. p for RIE = 0.012.



Recurrent rate is not just symptomatic

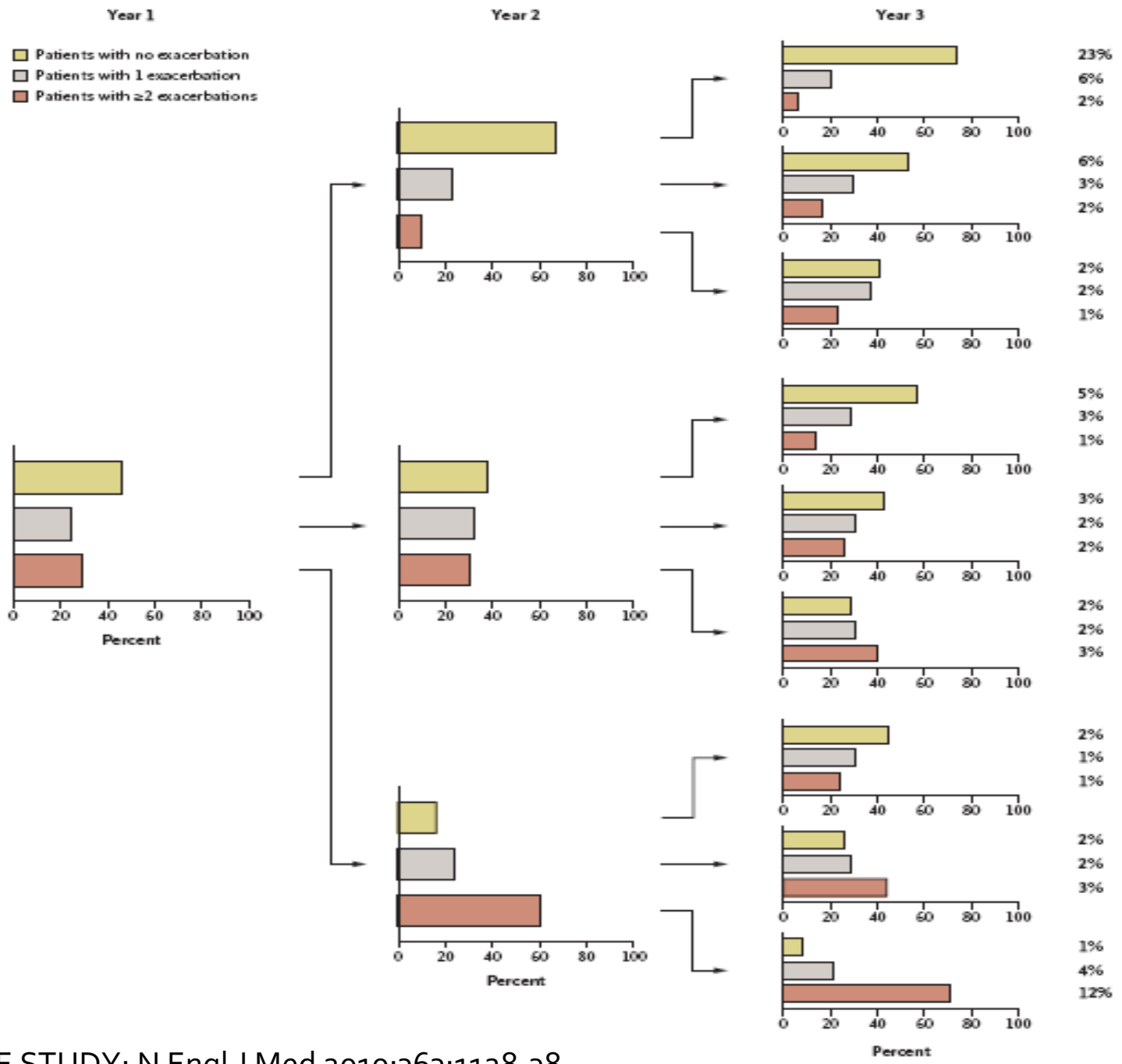


Recurrent Rate after first STEMI

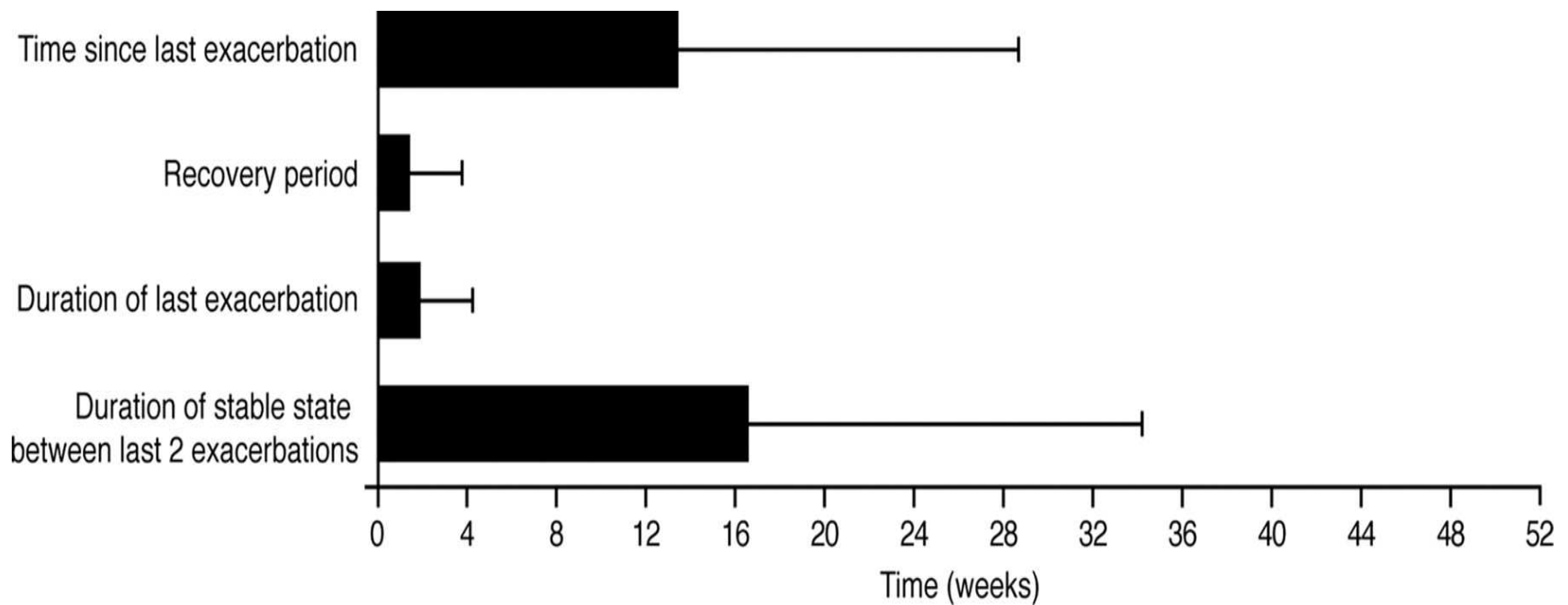


No. at risk	0	1	2	3	4	5
Recurrent ischemic events	2997	1468	1117	932	773	613
Heart failure	2997	1836	1535	1407	1245	1029

Adabag et al JAMA 2008



Εξοντωτική επανάληψη



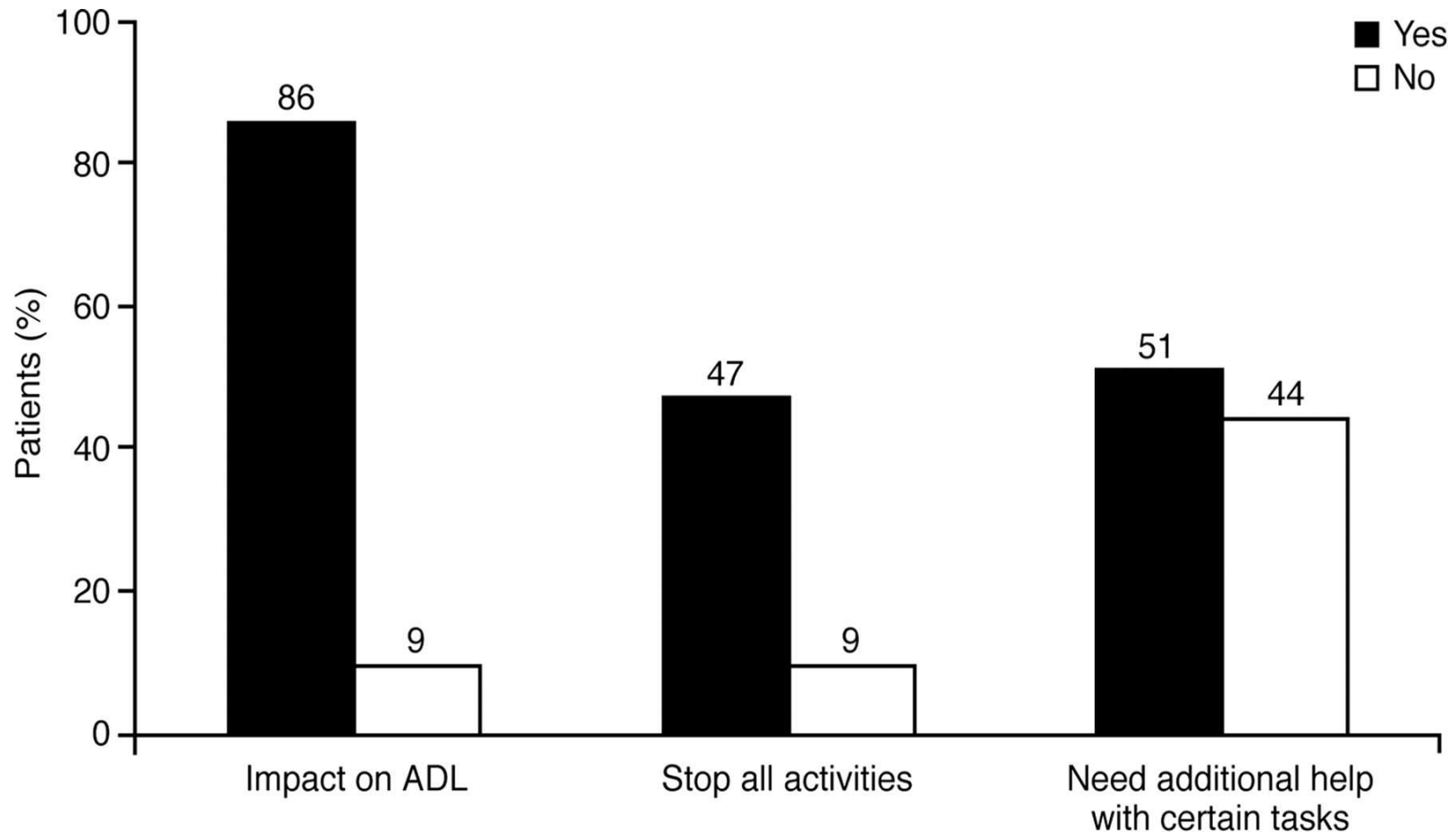
Moderate-to-very severe COPD with 2 or more ECOPD

Kessler R et al. Chest 2006;130:133-142

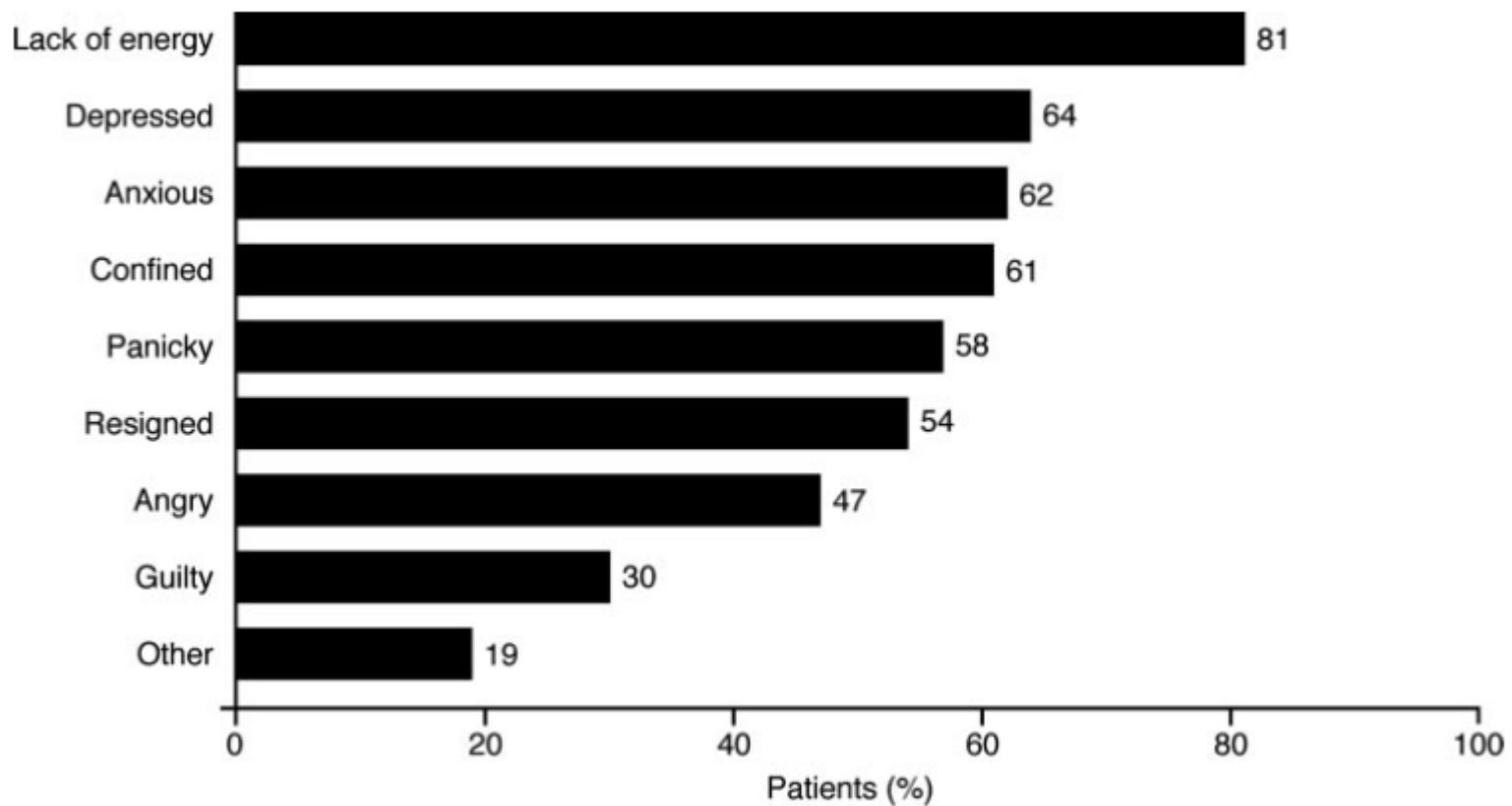
Why AE is the COPD stroke

- Semicolon or disease's full-stop period
- Triggering a catastrophic cascade
- Relapsing event
- Overwhelming
- Killer
- Emergency

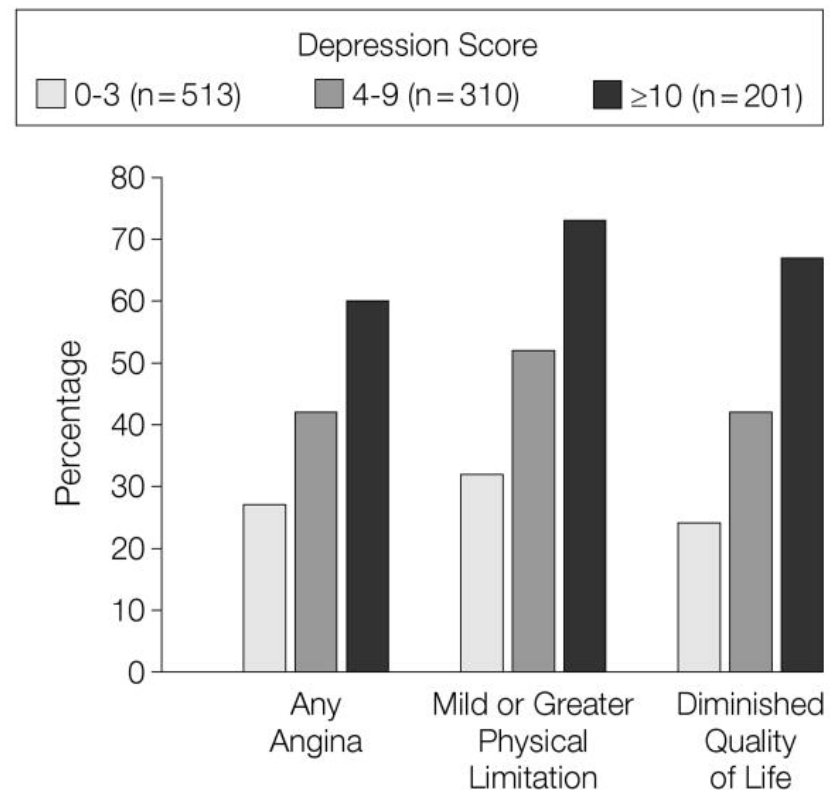
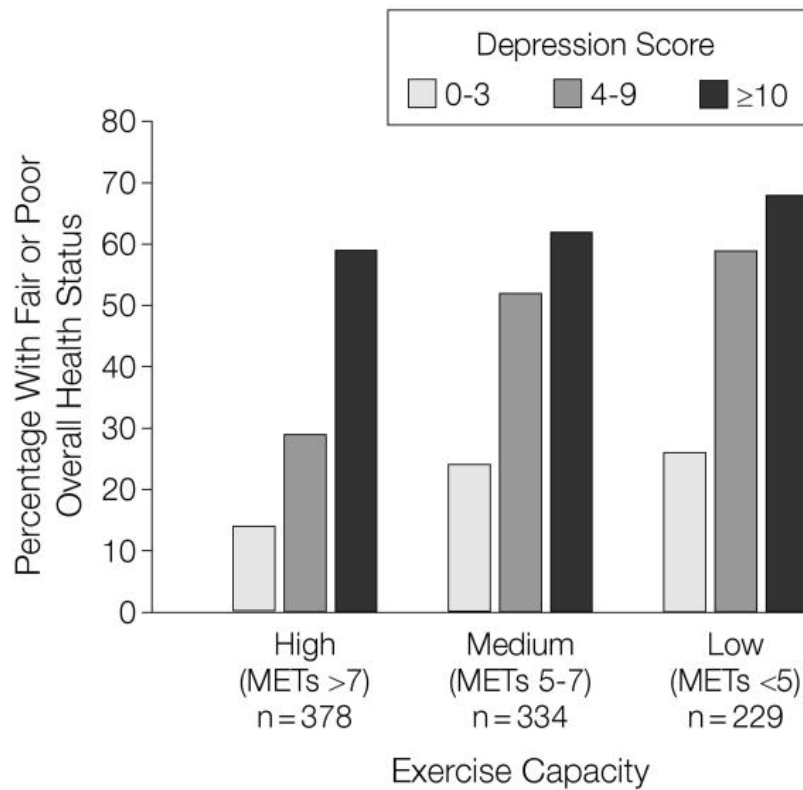
Impact of exacerbations of COPD on ADL. Data are expressed as a percentage of the whole patient



Feelings associated with ECOPD



After a heart attack, depressive symptoms are strongly associated with patient-reported health status

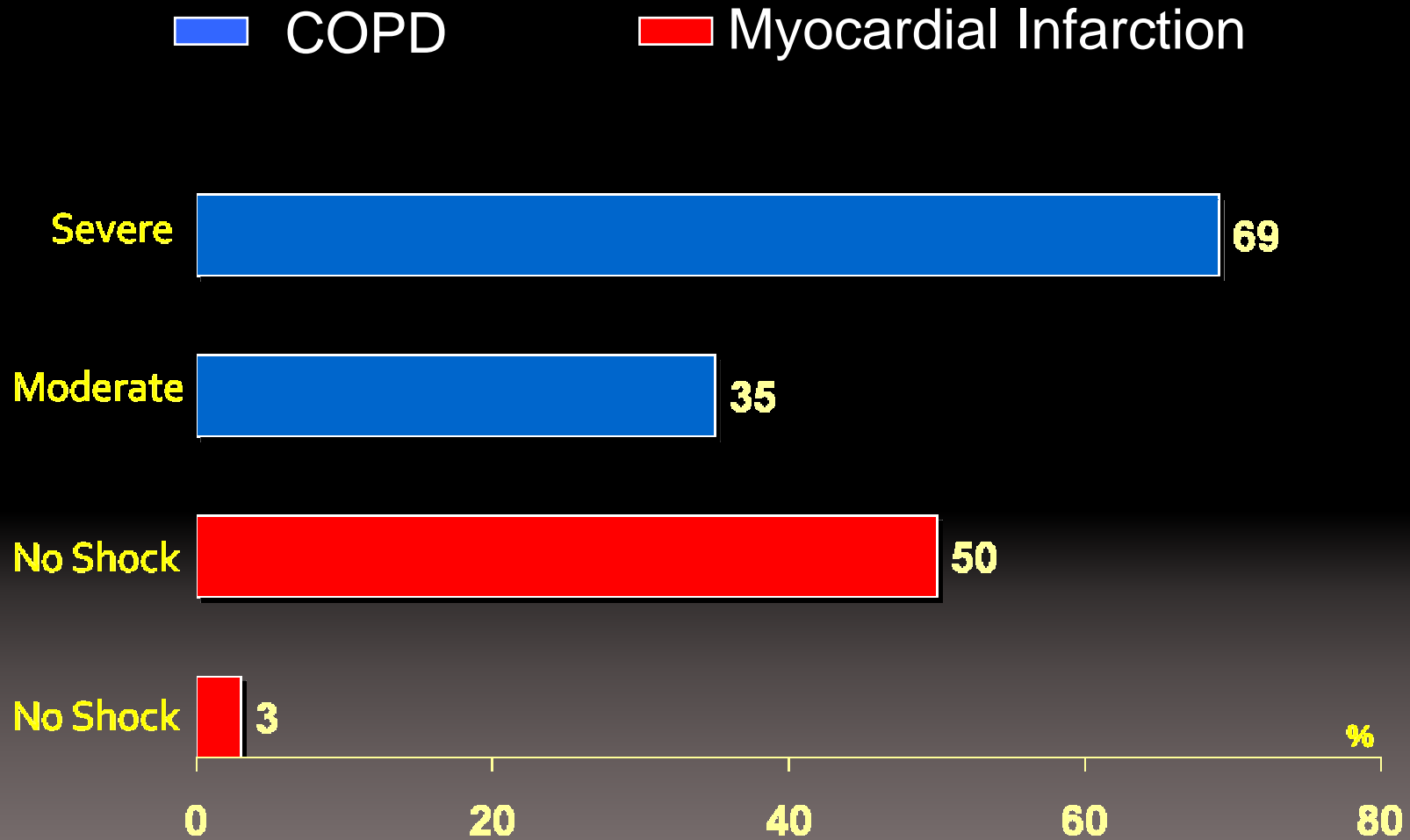


Ruo et al., Depressive Symptoms and Health-Related Quality of Life: The Heart and Soul Study. JAMA 2003

Why AE is the COPD stroke

- Semicolon or disease's full-stop period
- Triggering a catastrophic cascade
- Relapsing event
- Overwhelming
- Killer
- Emergency

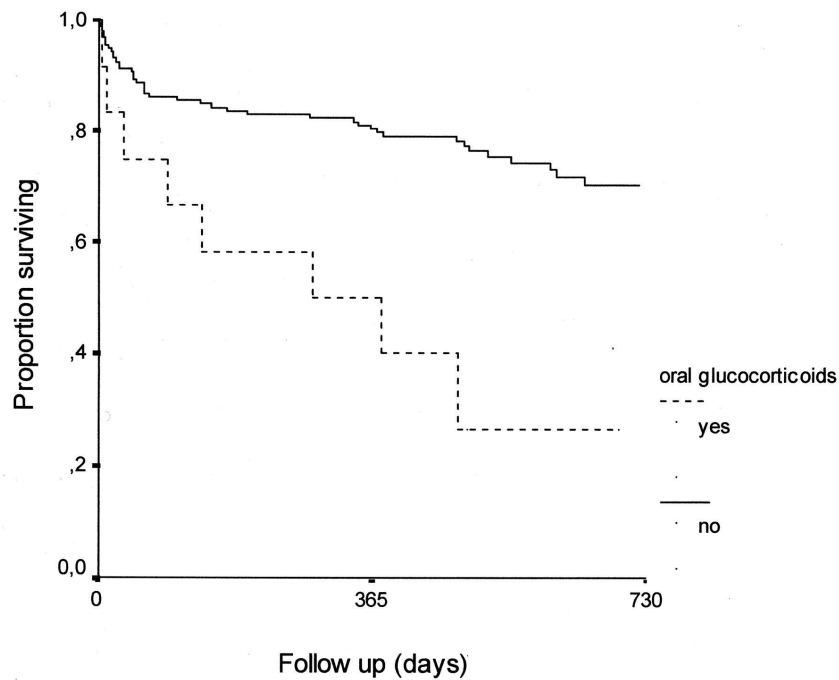
Mortality comparisons across diseases



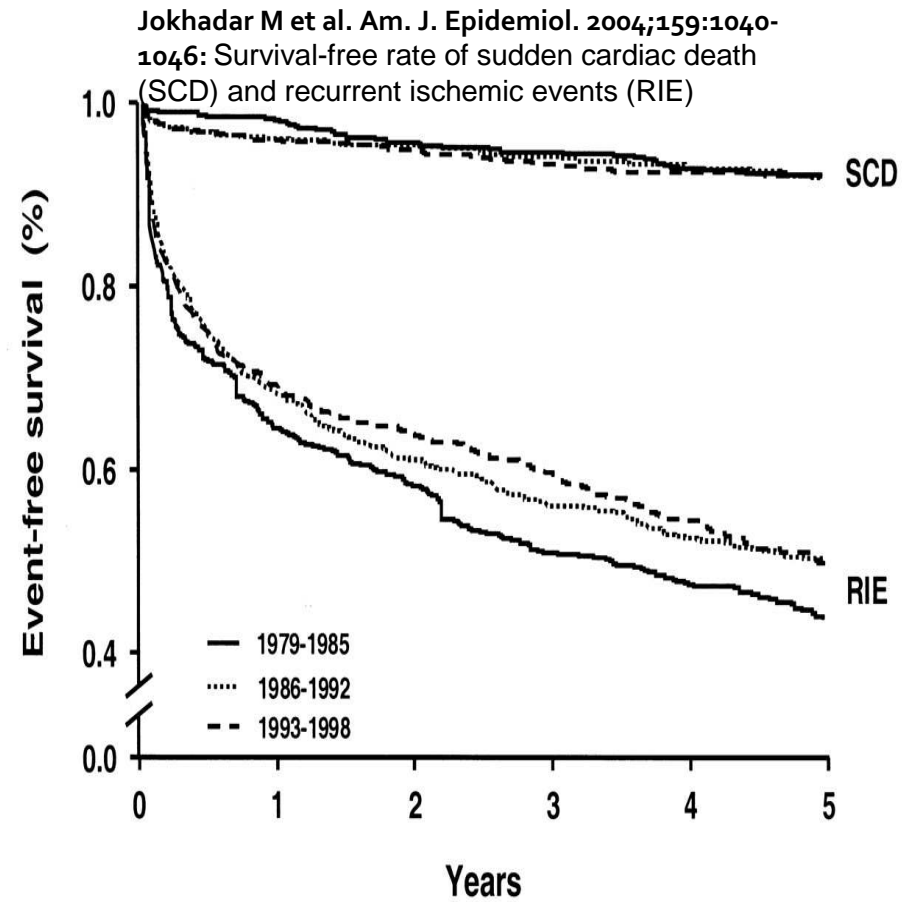
Swedish Registry 2008, GUSTO-1 Trial 2007

Survival curves after AECOPD

ECOPD with Acidosis

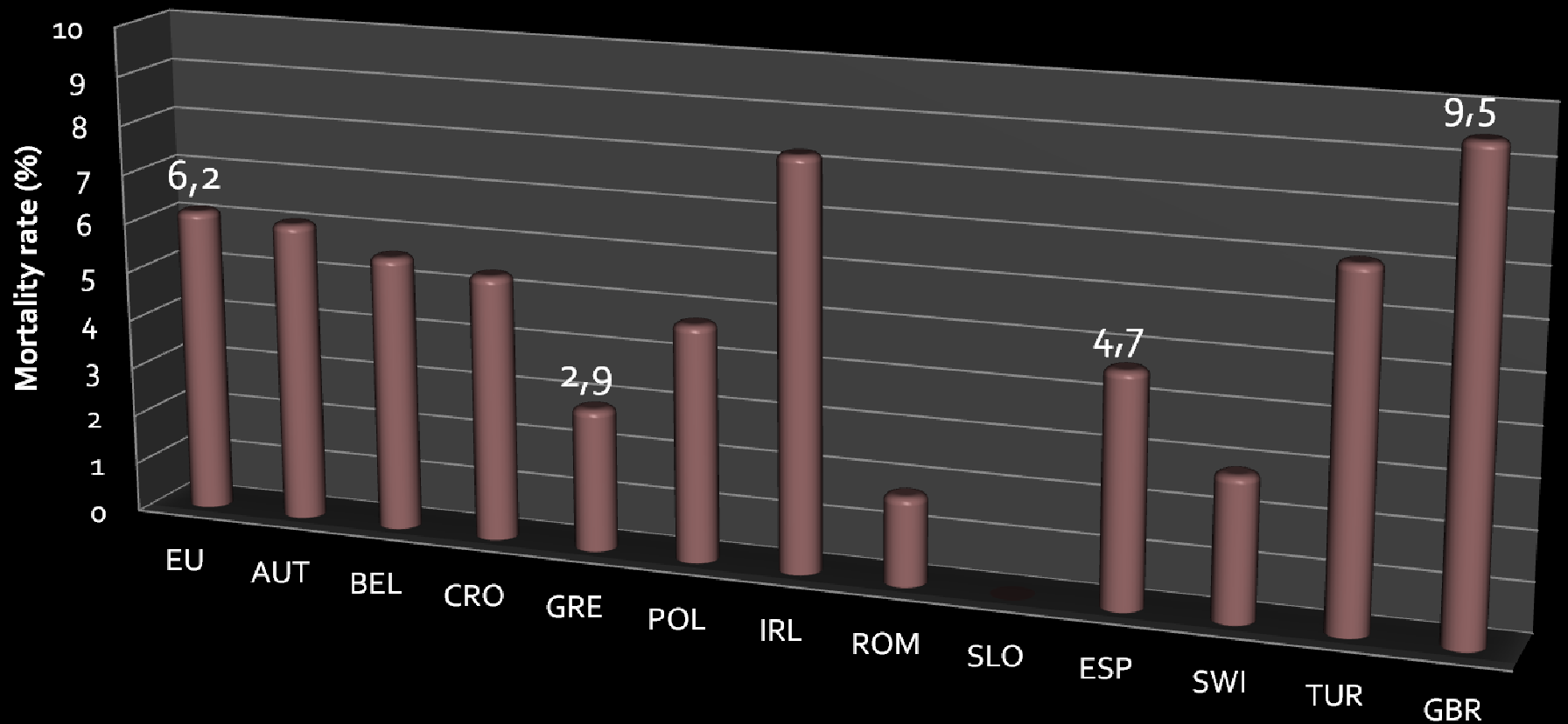


Groenewegen K H et al. Chest 2003;124:459-467



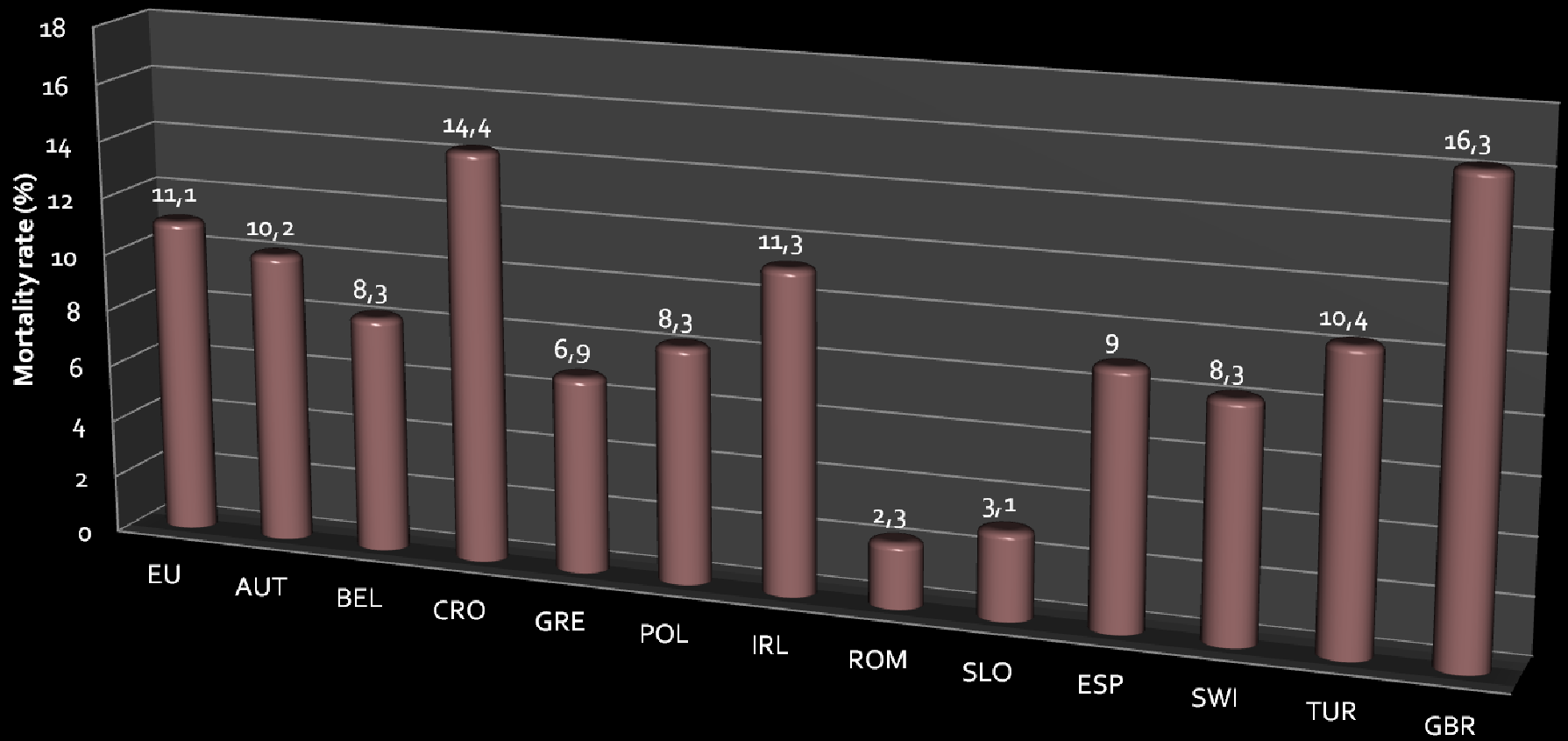
In Hospital mortality

GRE: 22% acidosis

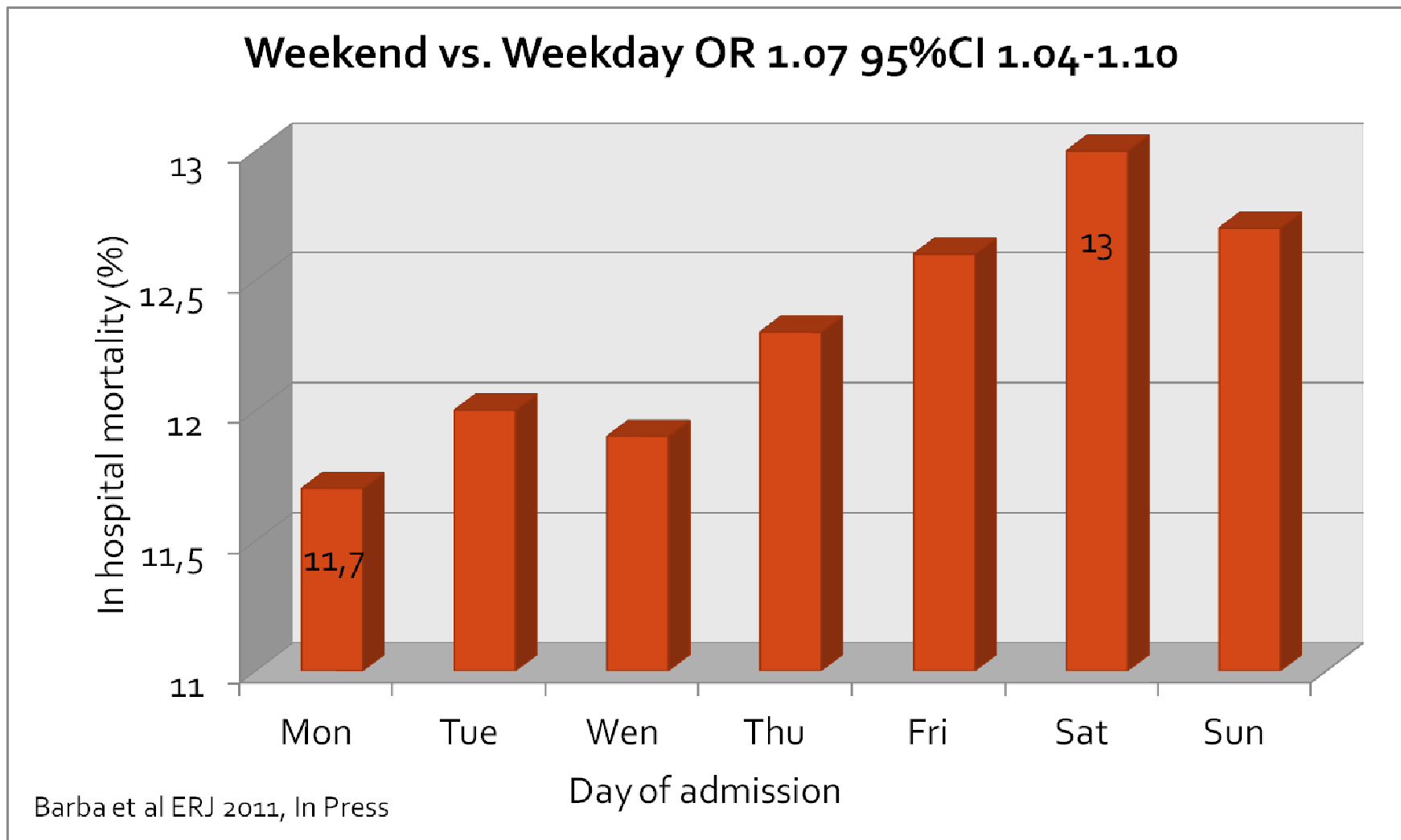


Composite mortality rate

(in-hospital plus god follow-up period)



|| Aware for the day.....



Why AE is the COPD stroke

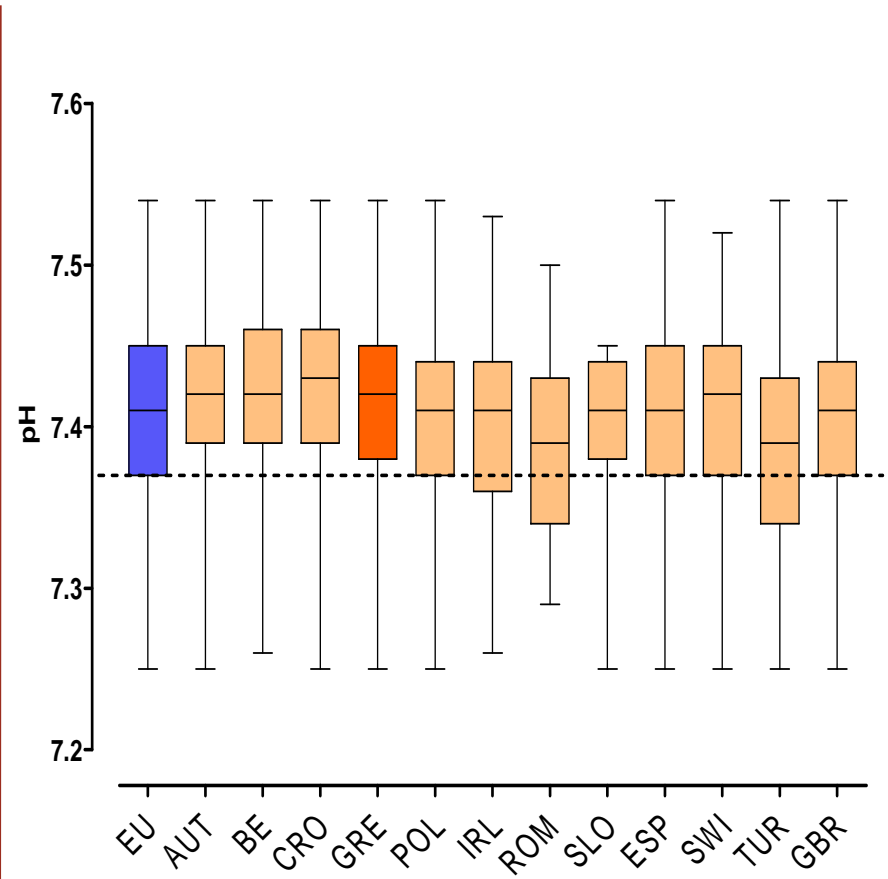
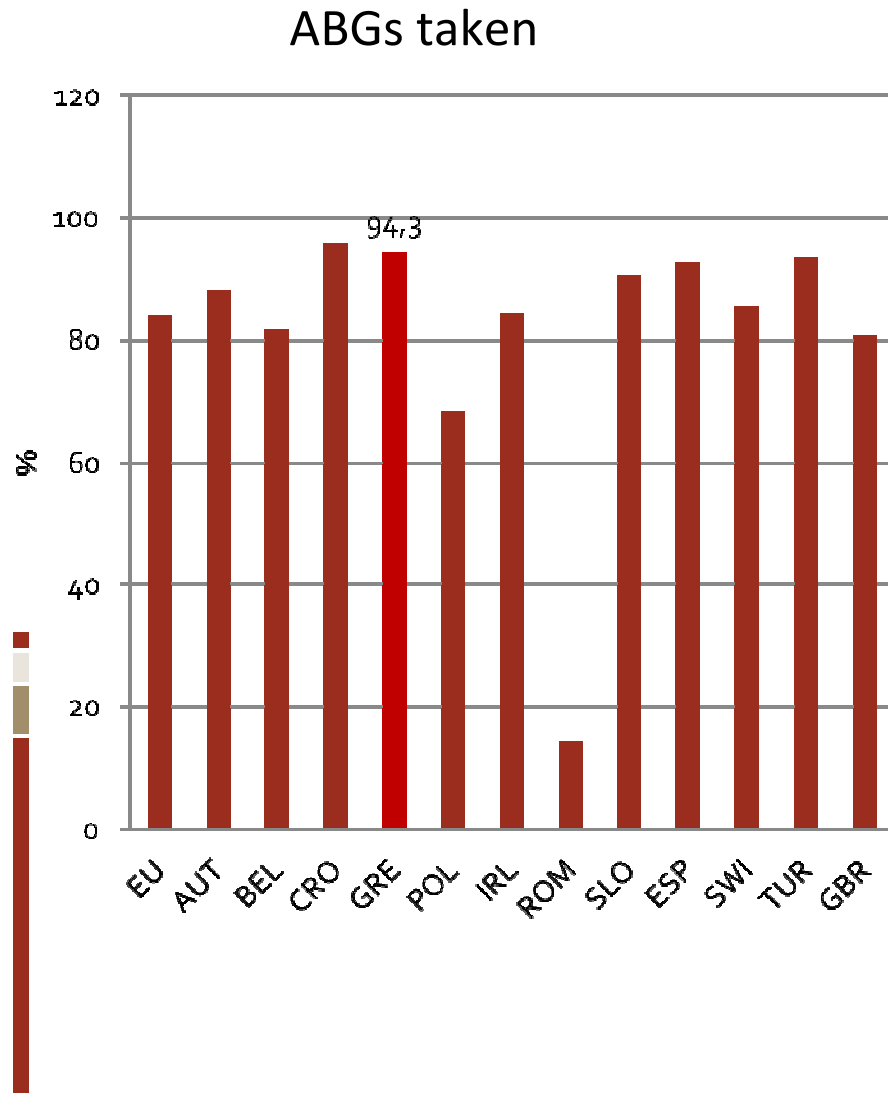
- Semicolon or disease's full-stop period
- Triggering a catastrophic cascade
- Relapsing event
- Overwhelming
- Killer
- Emergency

■ Θανάσιμο κλινικό κοκτέιλ.....

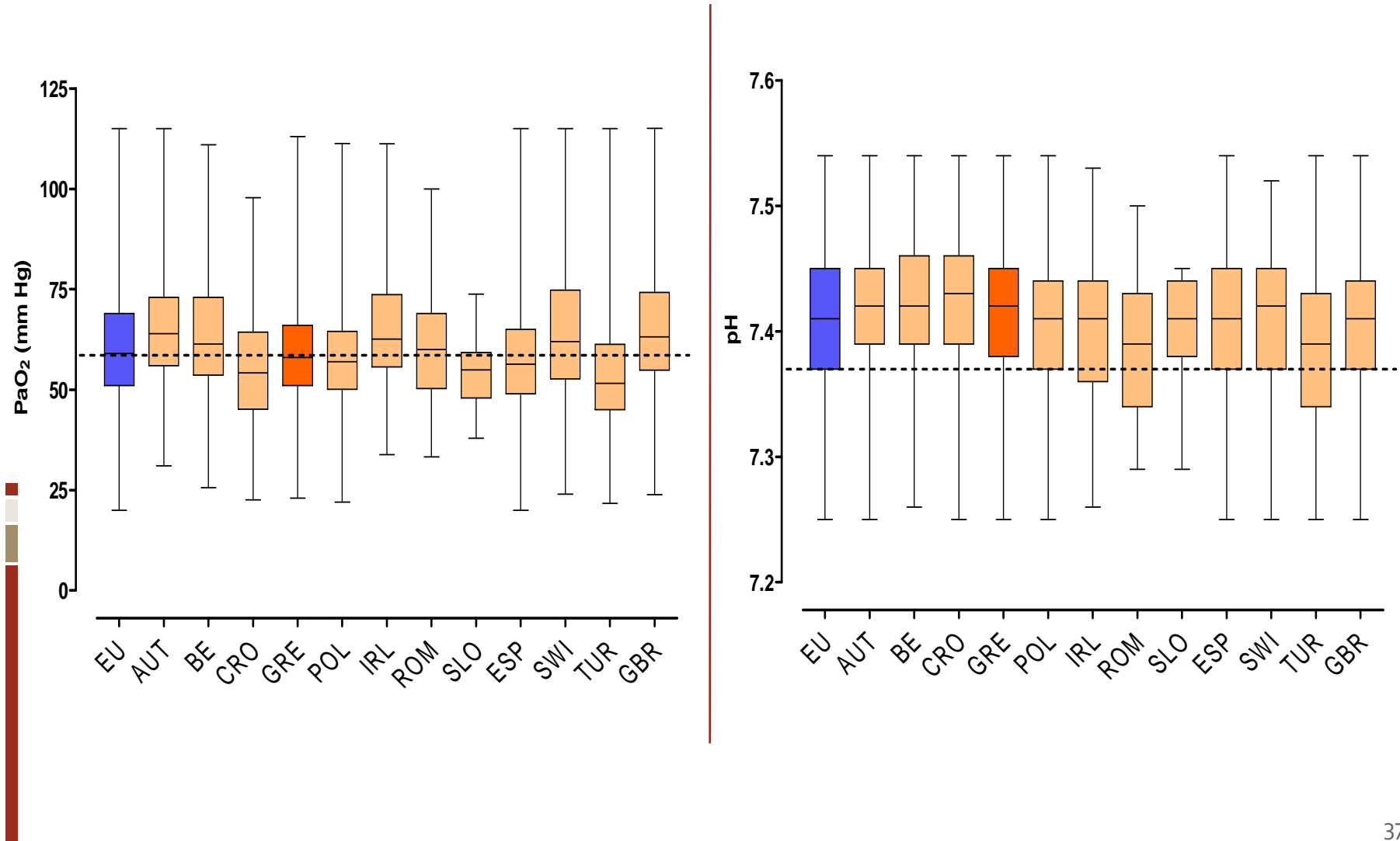
- Αναπνευστική ανεπάρκεια
- Αναπνευστική οξέωση
- Καρδιακή ανεπάρκεια
- Νεφρική ανεπάρκεια
- Ηπατική δυσλειτουργία
- Διαταραχές ΚΝΣ



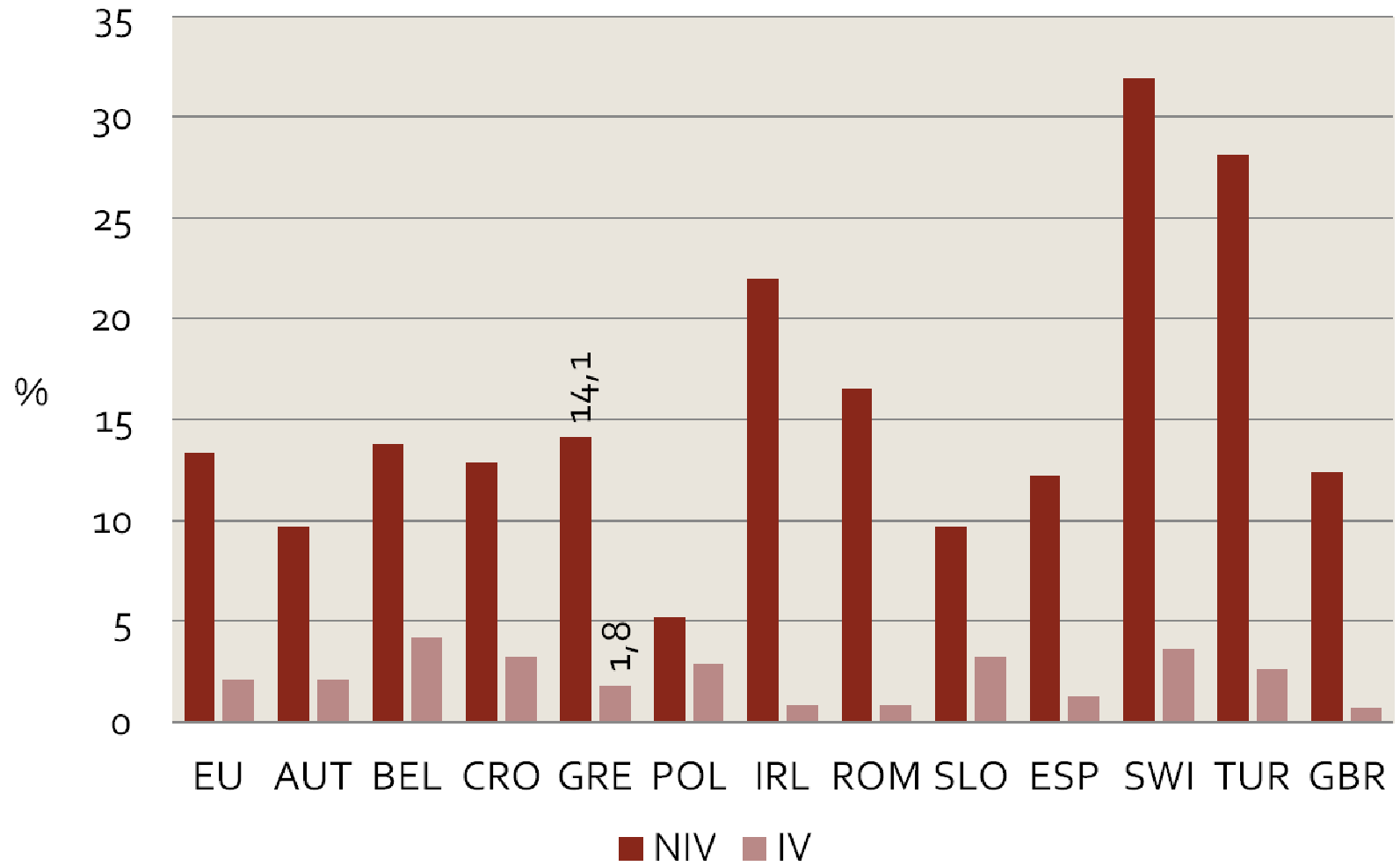
ERS COPD audit - ABGs on admission



ERS COPDaudit - ABGs on admission



NIV vs. IV



Why AE is the COPD stroke

- Semicolon or disease's full-stop period
- Triggering a catastrophic cascade
- Relapsing event
- Overwhelming
- Killer
- Emergency

Why AE is the COPD stroke

- Semicolon or disease's full-stop period
- Triggering a catastrophic cascade
- Relapsing event
- Overwhelming
- Killer
- Emergency
 - **STROKE**