

Cutting Edge Advanced Cardiovascular Imaging:

Current Applications
& Future Expectations...
Are There Any Limits?

.....
May 10th, 2025
Monasty Hotel
Thessaloniki
.....



Under the auspice of:
**Radiological Society
of Northern Greece**

PCO: INVENTICS A.E. - Medevents.gr
www.medevents.gr | Info@medevents.gr
T. +30 2310 474400
GNT0 LICENSE 0933E60000074600



WELCOME

Dear Colleagues,

It is a well-established fact that in the field of Medicine, we live in a time of technological revolution.

Regarding Radiology & Cardiovascular Imaging in particular, the use of the latest generation CT and MRI scanners, aided and enhanced by AI where necessary, has greatly expanded the range of clinical applications.

Using innovative and constantly evolving techniques, we are now able to (a) acquire state-of-the-art images of cardiovascular anatomy, with extreme diagnostic accuracy, and (b) get valuable hemodynamic data, which allows us to comprehensively assess the pathophysiology of various heart diseases.

St. Luke's Hospital and the Advanced Cardiovascular Imaging Unit, continuing their educational activities on cutting-edge topics, are organizing the Scientific Event with the title: "**Cutting Edge Advanced Cardiovascular Imaging: Current applications & Future expectations... Are there any limits?**"

The purpose of this event is to highlight the advantages of Cardiac CT and MRI, and their appropriate use in daily clinical practice, in accordance with international guidelines.

We also plan to interactively demonstrate interesting clinical cases, and discuss future prospects.

Distinguished speakers from Greece and abroad, with extensive clinical and research experience in the field of Advanced Cardiovascular Imaging, will participate in this event.

We would like to invite you to take part and look forward to having you with us!

Dr. Demosthenes Katsarkas

CEO, St. Luke's Hospital

Dr. Alexandros Kallifatidis

Head of Advanced Cardiovascular Imaging Unit

MD, PhD, EBCR, FEACVI

Department of Radiology, St. Luke's Hospital



SCIENTIFIC PROGRAM | Saturday 10 May 2025

09.00 - 09.30

Registrations

09.30 - 09.40

Welcome – Opening

Dimosthenis Katsarkas / CEO, St. Luke's Hospital
Alexandros Kallifatidis / Meeting Director

09.40 - 11.20

1st SESSION

Moderators: **A. Kallifatidis, K. Michailidis, J.-F. Paul**

09.40 - 10.00

Cardiac CT: Spectrum of Clinical Applications
K. Michailidis

10.00 - 10.20

Cardiac MRI: Spectrum of Clinical Applications
A. Kallifatidis

10.20 - 10.40

Coronary CTA protocols: how low can we go?
K. Michailidis

10.40 - 11.00

Artificial Intelligence in Cardiovascular Imaging
M. Francone

11.00 - 11.20

Discussion

11.20 - 11.50

Break

11.50 – 12.20

Satellite Lecture (p.8)

12.20 - 13.35

2nd SESSION

Moderators: **A. Kallifatidis, K. Michailidis, F. Pontana**

12.20 - 12.40

CT FFR: The Panacea in Coronary CTA?
J.-F. Paul

12.40 - 13.00

Stress perfusion Cardiac CT: Is it the “One stop-shop”
imaging modality for CAD?
A. Kallifatidis



SCIENTIFIC PROGRAM | Saturday 10 May 2025

13.00 - 13.20	Photon Counting CT: Exploring the unexplored F. Pontana
13.20 - 13.35	Discussion
13.35 - 14.25	Break
14.25 - 15.40	3rd SESSION Moderators: C. Gkizas, A. Kourtinos, K. Michailidis
14.25 - 14.45	Dual Energy and Cardiovascular Imaging: Principles and applications S.-I. Husain
14.45 - 15.05	Multimodality Imaging in Endocarditis C. Gkizas
15.05 - 15.25	Congenital Heart Disease: CT vs MR D. Logitsi
15.25 - 15.40	Discussion
15.40 - 16.10	Break
16.10 - 16.50	Lecture Moderators: P. Dardas, A. Kallifatidis, T. Karamitsos
16.10 - 16.35	Guidelines for the management of chronic coronary syndromes. The Role of CCTA and Plaque Analysis using a Case-Based Approach G. Korosoglou
16.35 - 16.50	Discussion



SCIENTIFIC PROGRAM | Saturday 10 May 2025

16.50 - 18.20

Case presentations

Moderators: **Gr. Giamouzis, A. Kallifatidis**

**P. Dardas, D. Dimitriadis, C. Gkizas, T. Karamitsos,
D. Lysitsas, N. Mezilis, K. Michailidis, K. Pagonidis,
D. Zioutas**

18.20 - 18.30

Closing remarks



FACULTY

Petros Dardas / MD, FESC, Interventional Cardiologist, Director, Cardiovascular Laboratory, St. Luke's Hospital, Thessaloniki, Greece

Dimokritos Dimitriadis / MD, Interventional Cardiologist, St. Luke's Hospital, Thessaloniki, Greece

Marco Francone / Professor of Medicine and Radiology, Humanitas University, Pieve Emanuele Milan, Italy

Grigorios Giamouzis / Associate Professor of Cardiology, University of Thessaly, Cardiology Clinic, University General Hospital of Larisa, Past President of the Heart Failure Working Group of the Hellenic Society of Cardiology

Christos Gkizas / Consultant Radiologist, PhD, EDiR, EBCR, Department of Cardiovascular & Thoracic Radiology, Heart and Lung Institute, CHU Lille, France

David Hall / Lead Cardiac Clinical Specialist

Syed Idris Husain / Senior Global Clinical Education professional in Computed Tomography, Bavaria, Germany

Alexandros Kallifatidis / MD, PhD, EBCR, FEACVI, Consultant Radiologist, MD, Head of Advanced Cardiovascular Imaging Unit, Radiology Department, St. Luke's Hospital, Thessaloniki, Greece

Theodore Karamitsos / Professor of Cardiology, Medical Department of AUTH, 1st Cardiology Department, AHEPA University General Hospital, Thessaloniki

Grigorios Korosoglou / Professor of Cardiology, GRN Hospitals Weinheim & Eberbach, Departments of Cardiology and Vascular Medicine, Weinheim, Germany

Alexandros Kourtinos / Adult and Paediatric Cardiologist, with European Diploma in Cardiology (EEGC - ESC), Specialized in France in the Latest Techniques of Cardiac Ultrasound, European EACVI certification in Transthoracic (TTE+stress ECHO) and Transesophageal (TOE) ultrasound, f. Director of the University Hospital of Lille (CHU Lille)

Dimitra Logitsi / MD, MSc, PhD, EBCR, Consultant Radiologist, Deputy Director CT/MRI Dept, Hygeia- Mitera Hospital, Athens, Greece

Dimitrios Lysitsas / MD, PhD, MRCP, Electrophysiologist - Interventional Cardiologist, St Lukes Hospital, Thessaloniki, Greece

Nikolaos Mezilis / Interventional Cardiologist, St. Luke's Hospital, Thessaloniki, Greece

Konstantinos Michailidis / Consultant Radiologist, Cardia Center - Cardiac Intelligence, Cardia Kozani, Greece



FACULTY

Konstantinos Pagonidis / Radiologist at Diagnostic Radiology Network, Heraklion Crete, Greece

Jean-Francois Paul / Consultant Radiologist, Head of Cardiac Imaging (CT and MR) Institut Mutualiste Montsouris, Paris - CEO and FOUNDER Spimed-AI

François Pontana / Professor of Cardiothoracic Imaging, Head of the Department of Cardiovascular & Thoracic Radiology, Heart and Lung Institute, CHU Lille, France

Dimitrios Zioutas / Interventional Cardiologist, St. Luke's Hospital, Thessaloniki, Greece



SATELLITE LECTURE

11.50 – 12.20

Satellite Lecture sponsored by **BAYER**

Moderator: **A. Kallifatidis**

Coronary CTA Protocol Personalisation

D. Hall



ACKNOWLEDGEMENTS

SIEMENS
Healthineers

Medtronic

 **BIAN** A.E.
ΕΤΑΙΡΕΙΑ ΤΟΥ ΟΜΙΛΟΥ ΓΙΑΝΝΑΚΟΠΟΥΛΟΥ

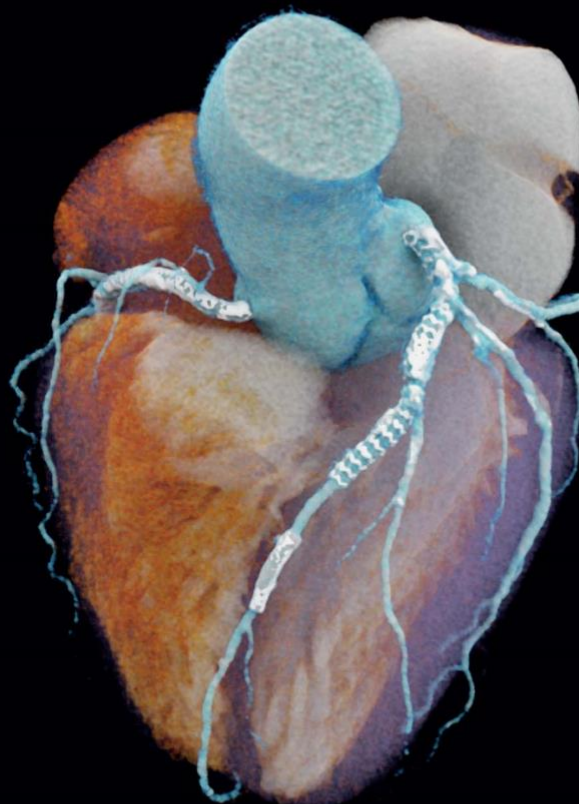
 **Bayer**


PharmaZac

 **GE HealthCare**

Redefine what is possible in cardiology

The world's first photon-counting CT



Courtesy of Universitätsspital Zürich, Zürich, Switzerland



NAEOTOM Alpha® with Quantum Technology

NAEOTOM Alpha is nothing less than the reinvention of computed tomography. Explore more.

siemens-healthineers.com/NAEOTOM-Alpha

SIEMENS
Healthineers

Medtronic

It's not TAVI, it's Evolut™



Durable clinical outcomes in low-risk patients at five years.^{†1}

5-year all-cause mortality or disabling stroke in Evolut™ Low Risk Trial¹



In low-risk patients at five years vs. surgery, only Evolut™ TAVI delivers

16% lower mean gradients¹

10.7 mmHg Evolut™ TAVI vs. 12.8 mmHg SAVR; p < 0.001

11% larger EOAs¹

2.1 cm² Evolut™ TAVI vs. 1.9 cm² SAVR

† Devices: Evolut™ R 73%/Evolut™ PRO 23.4%/CoreValve™ 3.6%.

1. Reardon M, et al. Transcatheter Versus Surgical Aortic Valve Replacement in Aortic Stenosis Patients at Low Surgical Risk: 5-Year Outcomes from the Evolut Low Risk Trial. Presented at ACC; March 2025.

This material should not be considered the exclusive source of information, it does not replace or supersede information contained in the device manual(s). Please note that the intended use of a product may vary depending on geographical approvals. See the device manual(s) for detailed information regarding the intended use, the implant procedure, indications, contraindications, warnings, precautions, and potential adverse events. For an MRI compatible device(s), consult the MRI information in the device manual(s) before performing an MRI. If a device is eligible for eFU usage, instructions for use can be found at Medtronic's website manuals.medtronic.com.

Manuals can be viewed using a current version of any major internet browser. For best results, use Adobe Acrobat® Reader with the browser. Medtronic products placed on European markets bear the CE mark and the UKCA mark (if applicable).

For any further information, contact your local Medtronic representative and/or consult Medtronic's websites.

Medtronic

Europe
Medtronic International Trading Sarl.
Route du Molliiau 31
Case postale
CH-1131 Tolochenaz
Tel: +41 (0)21 802 70 00
Fax: +41 (0)21 802 79 00
medtronic.eu

©2025 Medtronic. Medtronic, Medtronic logo, and Engineering the extraordinary are trademarks of Medtronic. All other brands are trademarks of a Medtronic company.

2025-low-risk-5yr-one-pager-emea-16764036
03/2025