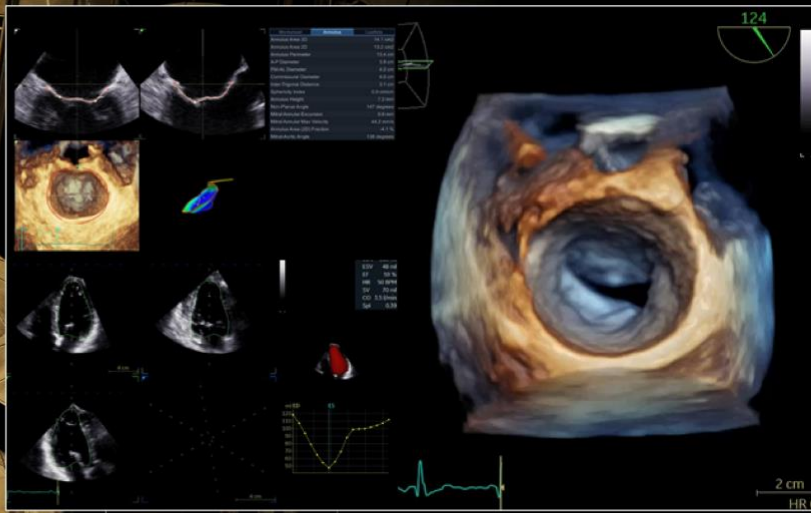


# UP-TO-DATE 4D ECHOCARDIOGRAPHY INTENSIVE HANDS-ON 4D TTE & TOE ECHO COURSE

24-25 OCTOBER 2026

EUROPEAN INTERBALKAN MEDICAL CENTER

THESSALONIKI / GREECE



PCO  
INVENTICS A.E. / Medevents.gr  
T. 2310 474 400 / E. info@medevents.gr / W. www.medevents.gr  
GNTD License: 0933E60000074600

COURSE DIRECTORS



PROF. LUIGI P. BADANO



DR. K. PAPADOPOULOS



Scan for more info



## Up-To-Date 4D Echocardiography: Intensive hands-on 4D TTE and TOE echo course October 24<sup>th</sup> – 25<sup>th</sup> 2026

**Venue:** European Interbalkan Medical Center, Thessaloniki, Greece

**Course Directors:** Prof Luigi Badano, Dr Konstantinos Papadopoulos

**Aim of the course:** This course addresses to all 4D echo users and aims at fully understand the best way to acquire and analyze patients using the 4D echocardiography.

**Registration fee:**

**-Physical attendance & 1 week participation at the echocardiography department of Interbalkan center (19-23/10/2026), restricted to 2 persons:** includes education on EchoPAC workstation and live scanning on vivid Pioneer machines with 4Vc probe, coffee breaks, 2 lunches, 1 dinner and 2 certificates, one from the course with ECMECs and one from the hospital as fellowship program **(1,000.00)**

**-Physical attendance & 1 week participation at the echocardiography department of Interbalkan center (26-30/10/2026), restricted to 2 persons:** includes education on EchoPAC workstation and live scanning on vivid Pioneer machines with 4Vc probe, coffee breaks, 2 lunches, 1 dinner and 2 certificates, one from the course with ECMECs and one from the hospital as fellowship program **(1,000.00) BOOKED**

# UP-TO-DATE 4D ECHOCARDIOGRAPHY

## INTENSIVE HANDS-ON 4D TTE & TOE ECHO COURSE

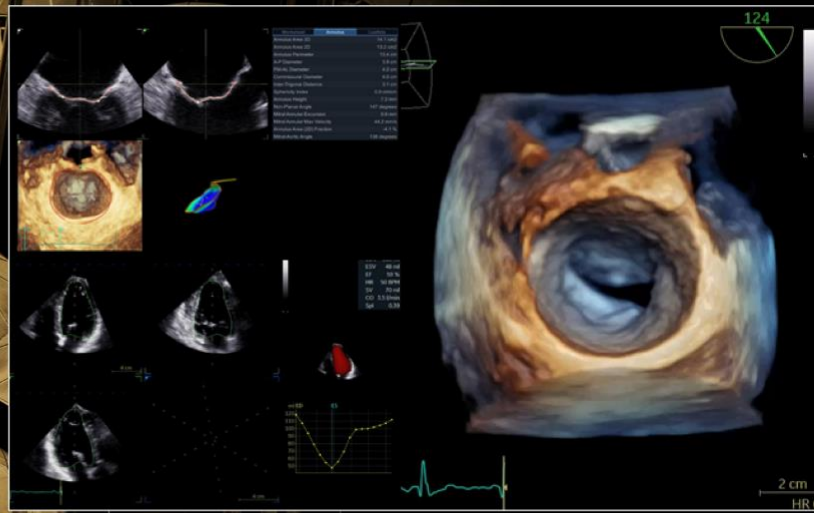
24-25 OCTOBER 2026

EUROPEAN INTERBALKAN MEDICAL CENTER

THESSALONIKI / GREECE



PCD  
INVENTICS A.E. / Medevents.gr  
T. 2310 474 400 / E. info@medevents.gr / W. www.medevents.gr  
GNTD License: 0933E6000074600



COURSE DIRECTORS



PROF. LUIGI P. BADANO



DR. K. PAPAPOPOULOS



Scan for more info

**-On-site hands-on registration (physical attendance):** includes education on EchoPAC workstation and live scanning on vivid Pioneer machines with 4Vc probe, coffee breaks, 2 lunches, 1 dinner and advanced certificate of education with ECMECs **(500.00)**

**-Virtual hands-on registration:** includes education on virtual EchoPAC workstation platforms (remotely from your PC) and advanced certificate of education with ECMECs **(350.00)**

**-Join online registration:** includes online attendance of the course with the ability to interact but not hands-on training and basic certificate of attendance with ECMECs **(150.00)**

\* Registration does not include transfer from and to airport and accommodation

\* Cancellation received after September 1st, no refund

For **company/group registrations** or in case of invoice, please contact us at [info@medevents.gr](mailto:info@medevents.gr) and do not fill in the online form. The company registration service enables you to register your delegates and get an invoice.

### Certificate of Attendance

The certificate will be marked with credits of Continuing Medical Education/Continuing Professional Development (ECMECs). The certificates will be send via email.

**Organized by** University of Milano in collaboration with Inventics S.A.  
<http://www.inventics.net>

**Correspondence:** Konstantinos Papadopoulos, MD, PhD, FESC, FEACVI  
Mob: +306937435062 | Email: [papadocardio@gmail.com](mailto:papadocardio@gmail.com)

# UP-TO-DATE 4D ECHOCARDIOGRAPHY

## INTENSIVE HANDS-ON 4D TTE & TOE ECHO COURSE

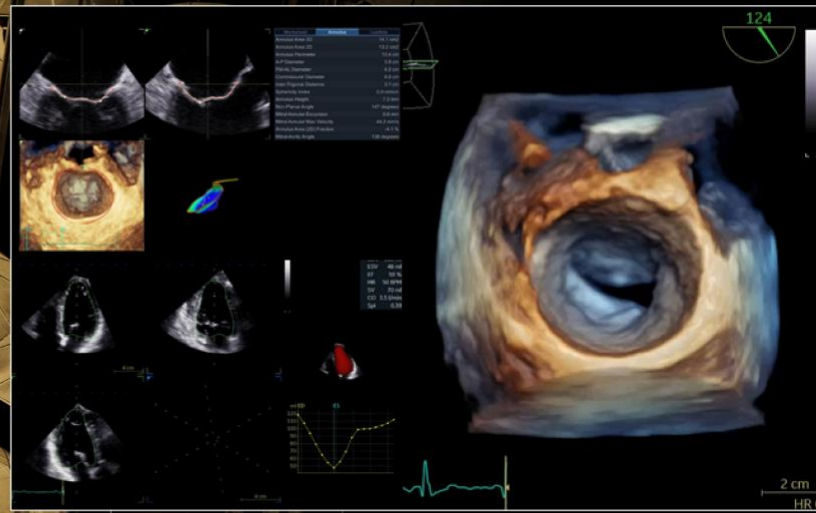
24-25 OCTOBER 2026

EUROPEAN INTERBALKAN MEDICAL CENTER

THESSALONIKI / GREECE



PCD  
INVENTICS A.E. / Medevents.gr  
T. 2310 474 400 / E. info@medevents.gr / W. www.medevents.gr  
GNTD License: 0933E6000074600



COURSE DIRECTORS



PROF. LUIGI P. BADANO



DR. K. PAPAPOULOS



Scan for more info

### Course program

#### 1<sup>st</sup> Day: Chambers evaluation

- |             |   |
|-------------|---|
| 08:30-09:00 | Welcome: Connection of participants to EchoPAC  |
| 09:00-09:30 | Basics of 4D echocardiography. How to apply the method in routine practice (lecture)<br><b>K. Papadopoulos</b>  |
| 09:30-10:30 | Workstation session I: Learn how to optimize my 4D images in EchoPAC<br><b>K. Benekos</b>   |
| 10:30-11:00 | How to assess left ventricle and left atrium with 4D (lecture)<br><b>L. Badano</b>  |
| 11:00-11:15 | <b>Coffee Break</b>   |
| 11:15-13:00 | Workstation session II: LV/LA assessment (Multislice, Triplane, 4D AutoLVQ, 4D AutoLAQ, AFI LA)<br>LV assessment: <b>K. Papadopoulos</b><br>LA assessment: <b>L. Badano</b> |

# UP-TO-DATE 4D ECHOCARDIOGRAPHY

## INTENSIVE HANDS-ON 4D TTE & TOE ECHO COURSE

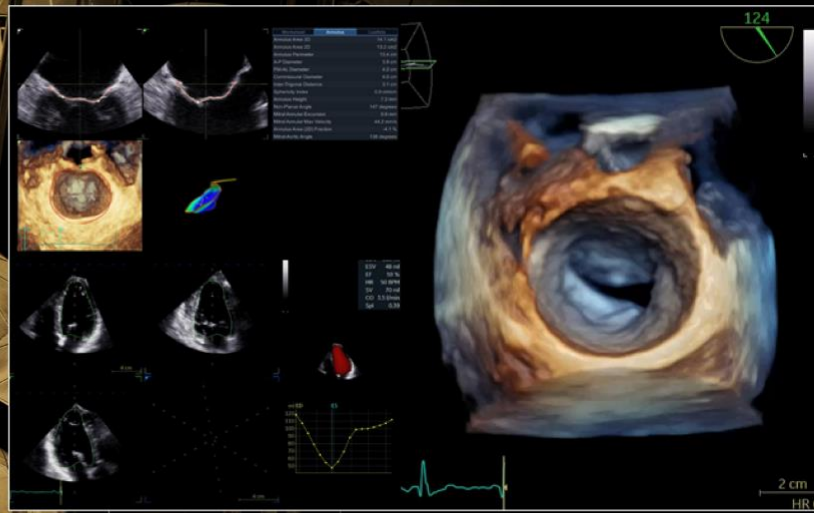
24-25 OCTOBER 2026

EUROPEAN INTERBALKAN MEDICAL CENTER

THESSALONIKI / GREECE



PCD  
INVENTICS A.E. / Medevents.gr  
T. 2310 474 400 / E. info@medevents.gr / W. www.medevents.gr  
GNTD License: 0933E60000074600



COURSE DIRECTORS



PROF. LUIGI P. BADANO



DR. K. PAPAPOPOULOS



Scan for more info

- 13:00-13:15 How to assess left ventricle with 2D AFI, triplane AFI  
Myocardial work, 4D strain (lecture)  
**K. Papadopoulos**
- 13:15-14:00 Lunch Break**
- 14:00-15:00 Workstation session III: LV assessment  
(triplane AFI-Myocardial work, 4D strain)  
**K. Papadopoulos**
- 15:00-15:30 Evaluation of right ventricle by 4D echocardiography (lecture)  
**L. Badano**
- 15:30-15:45 Coffee Break**
- 15:45-16:15 Advanced assessment of right ventricular function:  
coupling, RV strain, myocardial work, AI derived contractile  
function  
**L. Badano**
- 16:15-17:15 **Live scanning on Vivid Pioneer and E95 (all participants)**
- 17:15-19:00 *Workstation session IV: RV assessment (4D and strain)*  
**L. Badano**
- 20:00 Dinner**

# UP-TO-DATE 4D ECHOCARDIOGRAPHY

## INTENSIVE HANDS-ON 4D TTE & TOE ECHO COURSE

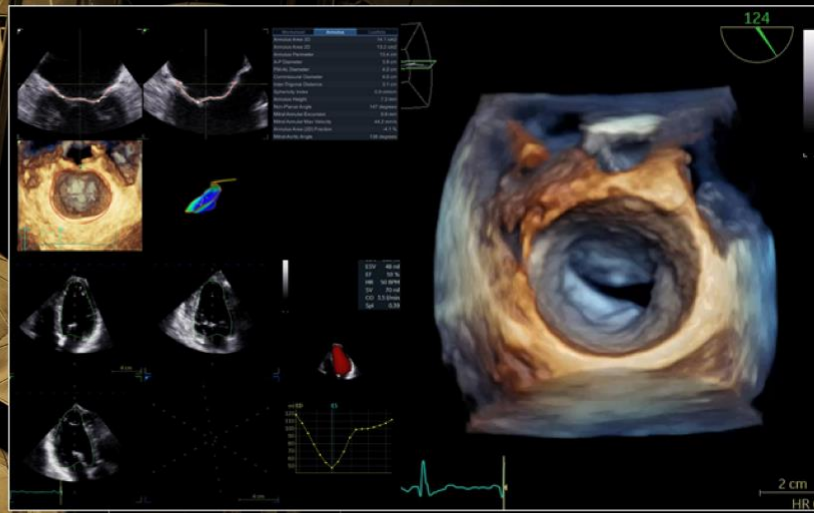
24-25 OCTOBER 2026

EUROPEAN INTERBALKAN MEDICAL CENTER

THESSALONIKI / GREECE



PCD  
INVENTICS A.E. / Medevents.gr  
T. 2310 474 400 / E. info@medevents.gr / W. www.medevents.gr  
GNTD License: 0933E6000074600



COURSE DIRECTORS



PROF. LUIGI P. BADANO



DR. K. PAPAPOPOULOS



Scan for more info

### 2nd Day: Valvular assessment/Transcatheter interventions

- 09:00-09:30 4D aortic valve and annulus assessment – TAVI preparation (lecture)  
**L. Badano**
- 09:30-10:15 *Workstation session V: AoV analysis*  
**K. Papadopoulos**
- 10:15-10:45 Mitral valve assessment (lecture)  
**K. Papadopoulos**
- 10:45-11:00 Coffee break**
- 11:00-12:30 *Workstation session VI: MV analysis (4D zoom-full volume TTE and TOE, 4D AutoMVQ, Flexislice for VCA and MVA in mitral stenosis, Understanding DMR and FMR cases)*  
**K. Papadopoulos**
- 12:30-13:00 4D Tricuspid valve assessment (lecture)  
**L. Badano**

# UP-TO-DATE 4D ECHOCARDIOGRAPHY

## INTENSIVE HANDS-ON 4D TTE & TOE ECHO COURSE

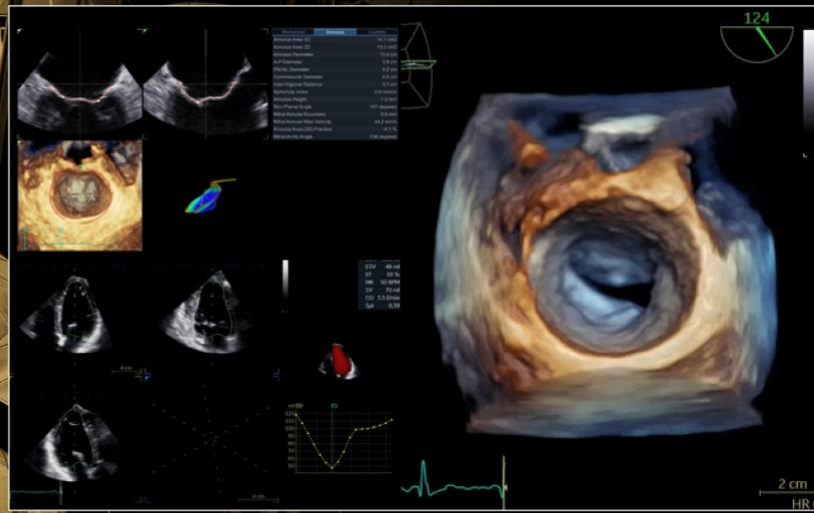
24-25 OCTOBER 2026

EUROPEAN INTERBALKAN MEDICAL CENTER

THESSALONIKI / GREECE



PCO  
INVENTICS A.E. / Medevents.gr  
T. 2310 474 400 / E. info@medevents.gr / W. www.medevents.gr  
GNTD License: 0933E6000074600



COURSE DIRECTORS



PROF. LUIGI P. BADANO



DR. K. PAPAPOPOULOS



Scan for more info

**13:00-13:45**

**Lunch Break**

13:45-15:00

*Workstation session VII: TV analysis (4D zoom, Full volume, 4D AutoTVQ)*

**L. Badano**

15:00-16:00

**Live scanning on Vivid Pioneer and E95 (all participants)**

### How to plan and guide Transcatheter Interventions:

16:00-16:45

*Workstation session VIII: How to screen and guide patients for ASD closure (lecture and EchoPAC analysis)*

**K. Papadopoulos**

**16:45-17:00**

**Coffee Break**

17:00-17:30

Tricuspid regurgitation: which patient should be treated and what are our transcatheter treatment options?  
(lecture)

**L. Badano**

17:30-18:30

*Workstation IX: How to screen and guide patients suitable for: Mitral-TEER (lecture and EchoPAC analysis)*

**K. Papadopoulos**

**End of course**