



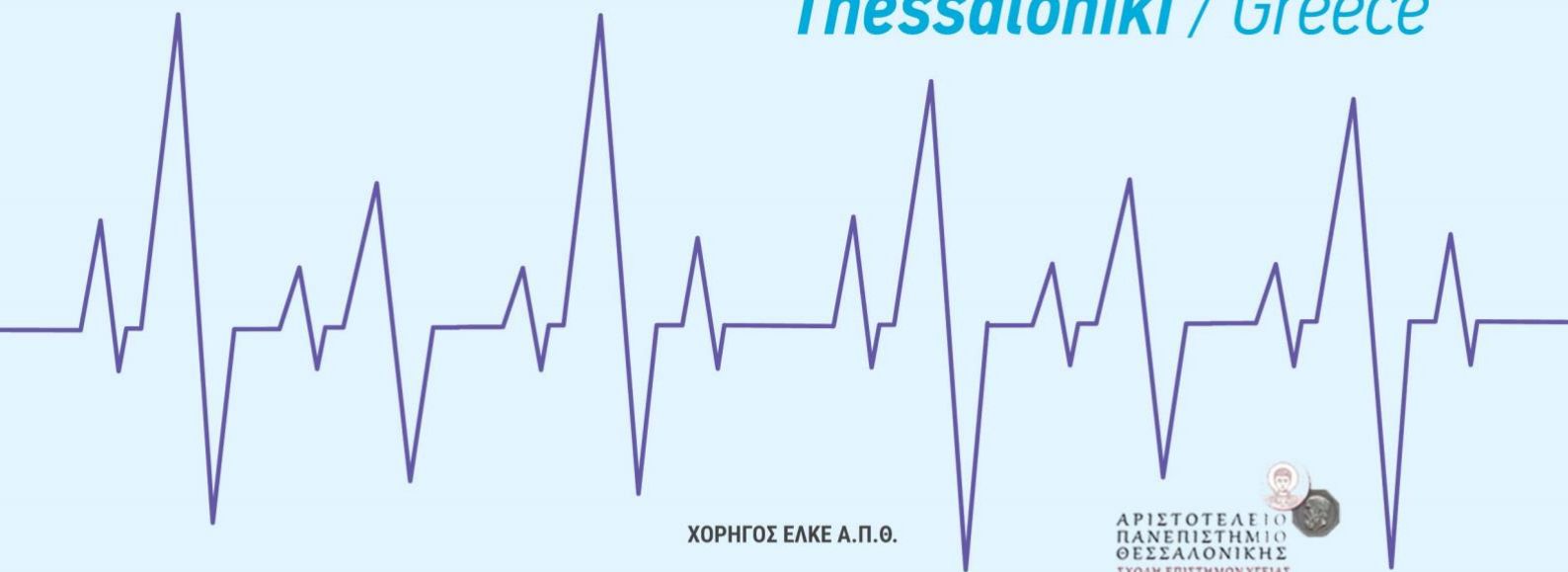
ΚΑΡΔΙΟΛΟΓΙΚΗ ΕΤΑΙΡΕΙΑ
ΒΟΡΕΙΟΥ ΕΛΛΑΔΟΣ

Α' ΠΑΝΕΠΙΣΤΗΜΙΑΚΗ
ΚΑΡΔΙΟΛΟΓΙΚΗ ΚΛΙΝΙΚΗ
Π.Γ.Ν. ΑΧΕΠΑ



**Σύγχρονες Εξελίξεις
στις Μυοκαρδιοπάθειες
5-6 Δεκεμβρίου 2025
Ξενοδοχείο MonAsty**

**Updates in
Cardiomyopathies
December 5-6, 2025
MonAsty Hotel
Thessaloniki / Greece**



ΧΟΡΗΓΟΣ ΕΛΚΕ Α.Π.Θ.



ΑΡΙΣΤΟΤΕΛΕΙΟ
ΠΑΝΕΠΙΣΤΗΜΙΟ
ΘΕΣΣΑΛΟΝΙΚΗΣ
ΣΧΟΛΗ ΕΠΙΣΤΗΜΩΝ ΥΓΕΙΑΣ
ΤΜΗΜΑ ΙΑΤΡΙΚΗΣ

ΥΠΟ ΤΗΝ ΑΙΓΙΔΑ
ΤΟΥ ΤΜΗΜΑΤΟΣ ΙΑΤΡΙΚΗΣ Α.Π.Θ.
της Σχολής Επιστημών Υγείας

PCO / Γραμματεία: Inventics A.E. / Medevents.gr
E. Info@medevents.gr / W. www.medevents.gr
Αρ. Ειδ. Σημ. Λειτ. Εοτ: Mhte 0933E60000074600



SCIENTIFIC PROGRAM | Friday 5 December 2025

09:30–10:15

Table 1

From Genetic Analysis to Patient Management

Moderators: **A. Chatzidimitriou, I. Papoulidis, Th. Gossios**

From Sample to Report: The Genetic Testing Pathway

St. Laidou

Genetic Results in Practice: Clinical Decision-Making

-Negative Result: What's Next?

-VUS: Navigating the Uncertainty

-P/LP Variants not Relevant to the Phenotype

Ath. Ververi

“Silent” Carriers in Familial Cardiomyopathy: The common practice and our way to manage

Clinical Follow-up (Exam, ECG, Echo): Is It Enough?

CMR & Holter: Must, Maybe, or Miss?

Sports: Free or Restricted?

Th. Zegkos

10:15–11:15

Table 2

Channelopathies

What Should the Clinical Cardiologist Know Before Referring a Patient to the Electrophysiologist?

Moderators: **V. Vassilikos, N. Fragakis, K. Gatzoulis**

Long and Short QT Syndromes

G. Giannopoulos

Brugada Syndrome

K. Gatzoulis

Catecholaminergic Polymorphic VT

G. Stavropoulos

Early Repolarization Syndrome

A. Antoniadis

Discussion: **St. Paraskevoidis, A. Kontogeorgis,**

St. Charitos, N. Gkouzoumas



SCIENTIFIC PROGRAM | Friday 5 December 2025

11.15-11.45

Coffee break

11:45-12:30

Table 3

Hypertrophic Cardiomyopathy

Moderators: **G. Bompotis, A. Rigopoulos, I. Styliadis**

HCM Pathophysiology: A Window for Therapy

D. Parcharidou

Pharmacological Therapy in Obstructive HCM: Clinical Challenges

A. Kasiakogias

Burn out HCM: From Genotype to Phenotype and Prognosis

S. Papatheodorou

12:30-13:00

Satellite Lecture (p. 12)

13:00-13:30

Table 4

Greek National Precision Medicine Network in Cardiology (GR iCardiacNet)

AHEPA Registry: Clinical and Genetic Data

Moderators: **A. Ziakas, G. Efthimiadis**

Prevalent HCM Variants in Northern Greece: Phenotype Correlations

Th. Gossios

High-Risk Genes in DCM, NDLVC, ARVC: Phenotype Correlations

D. Parcharidou

13.30-14.00

Satellite Lecture (p. 12)



ΚΑΡΔΙΟΛΟΓΙΚΗ ΕΤΑΙΡΕΙΑ
ΒΟΡΕΙΟΥ ΕΛΛΑΔΟΣ



Α' ΠΑΝΕΠΙΣΤΗΜΙΑΚΗ
ΚΑΡΔΙΟΛΟΓΙΚΗ ΚΛΙΝΙΚΗ
Π.Γ.Ν. ΑΧΕΡΑ

**Σύγχρονες Εξελίξεις
στις Μυοκαρδιοπάθειες
5-6 Δεκεμβρίου 2025**
Ξενοδοχείο MonAsty

**Updates in
Cardiomyopathies
December 5-6, 2025**
MonAsty Hotel
Thessaloniki / Greece



SCIENTIFIC PROGRAM | Friday 5 December 2025

14.00-15.30

Table 5

Special Cardiomyopathies: An Open View

Moderators: **Th. Karamitsos, A.Doumas, V. Kamperidis**

Fabry Disease: From Pre-detectable Stage to Diagnosis

E. Prappa

RASopathies

O. Boleti

Imaging in TTR Amyloidosis

G. Tziomalos

Neuromuscular Disorders in Children and Adults

S. Katranas

Discussion

15:30-18:00

Light Lunch

18:00-19:30

Table 6

Greek National Precision Medicine Network in Cardiology (GR iCardiacNet)

Panel: **A. Anastasakis, Ch. Vlachopoulos, V. Vassilikos, G. Efthimiadis**

19:30-20:15

Table 7

Opening Ceremony



SCIENTIFIC PROGRAM | Saturday 6 December 2025

09:30–10:30

Table 1

Medley Session

Moderators: **K. Naka, D. Tziakas, I. Zarifis**

Cardiomyopathies: Imaging Challenges

D. Klettas

Hereditary TTR Amyloidosis: The Genetic Cluster of Crete

M. Foukarakis

Cardiac involvement and risk assessment in mitochondrial diseases

K. Savvatis

A Clinical Case from Ioannina

I. Gartzonikas

10:30–11:20

Table 2

Special Topics in Cardiomyopathies

Moderators: **G. Filippatos, D. Farmakis**

High-Risk Pregnancy in Cardiomyopathy (HCM/DCM)

A. Briasoulis

End-Stage Heart Failure in Cardiomyopathy: The Patient's Journey Before and After Transplantation

A. Gkouziouta

Emerging Concepts in Cardio oncology

D. Farmakis

11:20–11:45

Coffee Break

11:45–12:30

Table 3 Interactive Session

A Dedication to Nikos Protonotarios — History through Stories. Free Discussion with his Loved Ones

Coordinators: **G. Efthimiadis, A. Anastasakis**

Experts: **A. Tsatsopoulou, W. McKenna, A. Protonotarios**



ΚΑΡΔΙΟΛΟΓΙΚΗ ΕΤΑΙΡΕΙΑ
ΒΟΡΕΙΟΥ ΕΛΛΑΔΟΣ



Α' ΠΑΝΕΠΙΣΤΗΜΙΑΚΗ
ΚΑΡΔΙΟΛΟΓΙΚΗ ΚΛΙΝΙΚΗ
Π.Γ.Ν. ΑΣΚΛΗΠΕΙΟΝ

*Σύγχρονες Εξελίξεις
στις Μυοκαρδιοπάθειες
5-6 Δεκεμβρίου 2025
Ξενοδοχείο MonAsty*

*Updates in
Cardiomyopathies
December 5-6, 2025
MonAsty Hotel
Thessaloniki / Greece*



SCIENTIFIC PROGRAM | Saturday 6 December 2025

12:30–13:00

Satellite Lecture (p. 13)

13.00:14:00

Table 4

Sudden Cardiac Death

Moderators: **A. Rigopoulos, D. Parcharidou**

Risk Scores in Cardiomyopathies: Behind the Decision-Making for SCD Prevention

A. Antonopoulos

One Size Doesn't Fit All: The Impact of Specific Mutations

Th. Gossios

Life with an ICD

G. Katranitsa

Supporting the Family

E. Tziaka

14.00 -14.30

Table 5

Moderator: **P. Nihoyiannopoulos**

Cardiomyopathies: Clinical Application of Big Genetic Data

W. McKenna

14:30–15:00

Satellite Lecture (p. 13)

15.00–17:30

Light Lunch

17:30–18:00

Satellite Lecture (p. 13)



ΚΑΡΔΙΟΛΟΓΙΚΗ ΕΤΑΙΡΕΙΑ
ΒΟΡΕΙΟΥ ΕΛΛΑΔΟΣ



Α' ΠΑΝΕΠΙΣΤΗΜΙΑΚΗ
ΚΑΡΔΙΟΛΟΓΙΚΗ ΚΛΙΝΙΚΗ
Π.Γ.Ν. ΑΛΕΞΙΑ

Σύγχρονες Εξελίξεις
στις Μυοκαρδιοπάθειες
5-6 Δεκεμβρίου 2025
Ξενοδοχείο MonAsty

Updates in
Cardiomyopathies
December 5-6, 2025
MonAsty Hotel
Thessaloniki / Greece



SCIENTIFIC PROGRAM | Saturday 6 December 2025

18.00-19.00

Table 6

Novel Therapies and Emerging Concepts

Moderators: **L. Michalis, E. Koudi**

Myosin inhibitors

F. Cecchi

Emerging concepts of fibrosis in NICM

Em. Androulakis

Cardiomyopathy: High Risk Genes and Sports

M. Papadakis

19:00-19:45

Table 7

Myocarditis Management According to the New Guidelines

Moderators: **G. Lazaros, G. Giannakoulas**

Inflammatory Myopericardial Syndrome

P. Rouskas

Therapeutic Approach to Myocarditis

D. Ntelios

Episodes of “Myocarditis” in Genotype-Positive Patients: Management & Prognosis

E. Pagourelis

19:45-20.15

Table 8

Closing of Conference

Moderator: **Ch, Vlachopoulos, G. Efthimiadis**

Honoring a Legend: Franco Cecchi

“Hypertrophic Cardiomyopathy. A Personal Story”



FACULTY LIST

A. Anastasakis / MD, PhD, Consultant Cardiologist, Scientific Director, Unit of Inherited and Rare Cardiovascular Diseases, Onassis Cardiac Surgery Center

E. Androulakis / City St George's University, King's College Hospital, London, Denmark Hill London, King's College London, School of Cardiovascular and Metabolic Medicine & Science

A. Antoniadis / Associate Professor of Cardiology, 2nd Cardiology Department A.U.Th., "Hippokration" General Hospital of Thessaloniki, Greece

A. Antonopoulos / Assistant Professor of Cardiology, Cardiogenetics Unit, 1st Cardiology Department, National Kapodistrian University of Athens

O. Boleti / MD, MRCPCH (UK), PhD Candidate at University College London, Institute of Cardiovascular Science, London, United Kingdom

G. Bompotis / Interventional Cardiologist, General Clinic of Thessaloniki

A. Briasoulis / Assistant Professor of Cardiology, University Of Athens, Therapeutic Clinic, Specialization in Heart Failure and Cardio-Oncology, Athens, Visiting Assistant Professor, University of Iowa, IA, USA

F. Cecchi / Professor of Cardiology, University of Firenze, Italy

St. Charitos / Consultant Cardiologist and Electrophysiologist, AHEPA University General Hospital of Thessaloniki

A. Chatzidimitriou / Director, Institute of Applied Biosciences (INAB), Centre for Research and Technology Hellas (CERTH)

A. Doulas / Professor in Nuclear Medicine at Aristotle University of Thessaloniki.

G. Efthimiadis / Professor of Cardiology, Aristotle University of Thessaloniki, 1st Cardiology Clinic, AHEPA University General Hospital, Thessaloniki

D. Farmakis / Assistant Professor, University of Athens Medical School, Athens University Hospital "Attikon"

G. Filippatos / Professor of Cardiology, National and Kapodistrian University of Athens, Chair, Department of Cardiology, Athens University Hospital Attikon

E. Foukarakis / Cardiologist, Head of Dept., Cardiology Clinic, Venizeleion Gen. Hospital of Heraklion-Crete

N. Fragakis / Professor of Cardiology, Aristotle University of Thessaloniki, Director of the 2nd Cardiology University Department, Hippokration General Hospital, Thessaloniki

I. Gartzonikas / MD, MSc, PhDc, 2nd Department of Cardiology, Faculty of Medicine, School of Health Sciences, University of Ioannina & University Hospital of Ioannina, Ioannina, Greece

K. Gatzoulis / Professor of Cardiology, Athens University, Hippokration General Hospital, Athens, Greece

G. Giannakoulas / Professor in Cardiology, Aristotle University of Thessaloniki, AHEPA General University Hospital, Thessaloniki



FACULTY LIST

- G. Giannopoulos** / Professor of Cardiology, AUTH, Thessaloniki, GR
- A. Gkouziouta** / Heart Failure and Transplant Cardiologist, Onassis Hospital, Athens
- N. Gkouzoumas** / PhD, Cardiologist, Coordinator Director of Cardiology Clinic, General Hospital "G. Gennimatas", Thessaloniki
- Th. Gossios** / Assistant Professor in Cardiology, Aristotle University of Thessaloniki, AHEPA University Hospital, Thessaloniki
- V. Kamperidis** / Assistant Professor of Cardiology and Cardiac Imaging AUTH, 1st Cardiology Dept, AHEPA University General Hospital, Thessaloniki, Greece
- Th. Karamitsos** / Professor of Cardiology, Medical Department of AUTH, 1st Cardiology Department, AHEPA University General Hospital, Thessaloniki
- A. Kasiakogias** / Cardiologist, Adjunct Lecturer (Cardiomyopathies, Sports Cardiology), Specialist in Cardiac Magnetic Resonance Imaging (EACVI/SCMR Level III), Cardiogenetics Unit, 1st University Cardiology Department, General Hospital of Athens "Hippocraton", Athens
- S. Katranas** / Consultant Cardiologist, Clinical Fellow in Cardiomyopathies, Cardiology Department & Muscular Dystrophy Association Unit, AHEPA University Hospital.
- G. Katranitsa**
- D. Klettas** / MD, MSc, PHD, Consultant Cardiologist, Cardiac Imaging Specialist, Hippokraton GH, Athens, NHS Cardiology Consultant
- A. Kontogeorgis** / MBBCh, MRCPUK, PhD Imperial College London, Cardiologist, Electrophysiologist, Interbalkan Medical Centre. Reader in Cardiology Aristotle University School of Medicine
- E. Kouidi** / Cardiologist, Professor of Sports Medicine, Laboratory of Sports Medicine, AUTH
- S. Laidou** / Institute of Applied Biosciences | Centre for Research and Technology Hellas (INAB|CERTH)
- G. Lazaros** / Cardiologist, Director, 1st University Cardiology Clinic, Hippokraton UGH, Athens, Greece
- W. McKenna** / Emeritus Professor of Cardiology - UCL, London, UK
Emeritus British Heart Foundation Chair of Molecular Cardiovascular Sciences
- L. Michalis** / Professor of Cardiology, University of Ioannina, Director, 2nd Cardiology Department, University General Hospital of Ioannina, President Union European Medical Specialists (UEMS) Cardiology Section, Chair Grouping 1 UEMS, President Elect HCS
- K. Naka** / Professor of Cardiology, Faculty of Medicine, School of Health Sciences, University of Ioannina, 2nd Department of Cardiology, University Hospital of Ioannina, Ioannina. Head of the Heart Failure Unit. President-Elect of the Heart Failure Working Group of the Hellenic Cardiac Society.



FACULTY LIST

P. Nihoyannopoulos / MD, FRCP, FACC, FESC, FACC, FAHA, Professor of Cardiology, Imperial College London, NHLI, Hammersmith Hospital, London, UK, Emeritus Professor of Cardiology, National and Kapodistrian University of Athens, Greece

D. Ntelios / Cardiologist, General Hospital Ippokrateio, Thessaloniki

E. Pagourelis / MD, MSc, PhD, FESC, FEACVI, Assistant Professor in Cardiology-Echocardiography, Third Cardiology Department, Hippokrateion General Hospital, Aristotle University of Thessaloniki, Greece

M. Papadakis / Professor of Cardiology, St George's, University of London, Honorary Consultant Cardiologist, St George's University Hospitals NHS Foundation Trust

S. Papatheodorou / Cardiologist, Inherited Heart Diseases Unit, Onasseio Cardiac Surgeon Centre, Athens

I. Papoulidis / 3rd Department of Obstetrics and Gynecology, School of Medicine, Aristotle University of Thessaloniki
Access To Genome, P.C.

St. Paraskevaïdis / Cardiologist-Electrophysiologist, MD, PhD
GENERAL CLINIC, EUROMEDICA

D. Parcharidou / Cardiologist, 1st Dept of Cardiology, UGH AHEPA, Thessaloniki, Greece

E. Prappa / Cardiologist, Cardiomyopathy Clinic, Evangelismos GH, Athens

A. Protonotarios / Senior Research Associate, Centre for Heart muscle disease UCL Institute of Cardiovascular Science, London, UK

A. Rigopoulos / Associate Director, Adult Cardiology, Mitera General Hospital, Athens, Chairman WG on Cardiomyopathies, Basic Research and Inherited Diseases of the Hellenic Society of Cardiology

P. Rouskas / Cardiologist, Academic Fellow

K. Savvatis / Consultant Cardiologist, Inherited Cardiovascular Diseases Unit, Barts Heart Centre, London, Honorary Associate Professor in University College London and Queen Mary University London

G. Stavropoulos / Cardiologist, Electrophysiologist, Consultant of Cardiology Department, Hippokration GH of Thessaloniki

I. Styliadis / Cardiologist, Deputy Coordinator Director, 2nd Cardiology Clinic, "Papageorgiou" General Hospital, Thessaloniki

A. Tsatsopoulou / MD, Paediatrician, Paediatric Clinic, Naxos, Scientific fellow of the National Network for Rare and Inherited Cardiovascular Disorders, Member of the Working Group on Cardiopathies and Basic Research, Hellenic Cardiological Society, Member of the Working Group on Cardiovascular Diseases and Pericardial Diseases, European Society of Cardiology, ESC

E. Tziaka / Psychologist, PhDc. MPhil Criminological Research, University of Cambridge



FACULTY LIST

D. Tziakas / FESC,FACC,FSCAI, Professor in Cardiology Democritus University Of Thrace, Head of Cardiology Dept. and Cardiac Catheterization Lab, UGH of Alexanroupolis, Greece

G. Tziomalos / Resident in Cardiology - AHEPA University Hospital Thessaloniki

V. Vassilikos / MD, FACC, FESC, Professor of Cardiology, Aristotle University of Thessaloniki, Director of 3rd Cardiology Department, Hippokration General Hospital, Thessaloniki

A. Ververi / Clinical Geneticist-Paediatrician, Department of Genetics for Rare Diseases, Papageorgiou General Hospital, Thessaloniki, Greece

Ch. Vlachopoulos / Professor of Cardiology, Medical School, University of Athens

I. Zarifis / Interventional Cardiologist, Coordinator Director of Cardiology Dept, "G. Papanikolaou" GH, Thessaloniki, Greece

Th. Zegkos / Cardiologist, AHEPA UGH, Thessaloniki, Greece

A. Ziakas / Professor of Cardiology, Aristotle University of Thessaloniki, 1st Cardiology Department, AHEPA General University Hospital, Thessaloniki



ΚΑΡΔΙΟΛΟΓΙΚΗ ΕΤΑΙΡΕΙΑ
ΒΟΡΕΙΟΥ ΕΛΛΑΔΟΣ



Α' ΠΑΝΕΠΙΣΤΗΜΙΑΚΗ
ΚΑΡΔΙΟΛΟΓΙΚΗ ΚΛΙΝΙΚΗ
Π.Γ.Ν. ΑΧΕΡΑ

Σύγχρονες Εξελίξεις
στις Μυοκαρδιοπάθειες
5-6 Δεκεμβρίου 2025
Ξενοδοχείο MonAsty

Updates in
Cardiomyopathies
December 5-6, 2025
MonAsty Hotel
Thessaloniki / Greece



SATELLITE LECTURES

Friday 5 December 2025

12:30–13:00

Satellite Lecture sponsored by **Astra Zeneca**

Applying Precision Medicine and holistic treatment in the treatment of patients with Hereditary Amyloidosis from Transthyretin (hATTR)

Moderator: **G. Efthimiadis**

Characteristics of patients with Hereditary Amyloidosis from Transthyretin (hATTR)

D. Parcharidou

New approaches in the treatment of patients with Hereditary Amyloidosis from Transthyretin (hATTR)

Th. Gossios

13.30–14.00

Satellite Lecture sponsored by **Bayer**

Moderator: **G. Efthimiadis**

From Cardiomyopathies to ATTR-CM: a diagnostic & therapeutic journey

Th. Zegkos



ΚΑΡΔΙΟΛΟΓΙΚΗ ΕΤΑΙΡΕΙΑ
ΒΟΡΕΙΟΥ ΕΛΛΑΔΟΣ



Α' ΠΑΝΕΠΙΣΤΗΜΙΑΚΗ
ΚΑΡΔΙΟΛΟΓΙΚΗ ΚΛΙΝΙΚΗ
Π.Γ.Ν. ΑΣΚΛΗΠΙΟΥ

Σύγχρονες Εξελίξεις
στις Μυοκαρδιοπάθειες
5-6 Δεκεμβρίου 2025
Ξενοδοχείο MonAsty

Updates in
Cardiomyopathies
December 5-6, 2025
MonAsty Hotel
Thessaloniki / Greece



SATELLITE LECTURES

Saturday 6 December 2025

12:30–13:00

Satellite Session sponsored by **Pfizer**

Moderators: **G. Efthymiadis, Ch. Vlachopoulos**

Where evidence meets action: the role of data in ATTR cardiomyopathy clinical decision-making

D. Parcharidou

14:30–15:00

Satellite Lecture sponsored by **Pharma Genesis**

Moderator: **L. Michalis**

Novel agents to treat cardiac amyloidosis: Clinical data & future perspectives

M. Gospodinova

17:30–18:00

Satellite Lecture sponsored by **Bristol**

Moderator: **A. Ziakas**

Targeting the Pathophysiology of oHCM: New Therapeutic Horizons

K. Naka



ΚΑΡΔΙΟΛΟΓΙΚΗ ΕΤΑΙΡΕΙΑ
ΒΟΡΕΙΟΥ ΕΛΛΑΔΟΣ

Σύγχρονες Εξελίξεις
στις Μυοκαρδιοπάθειες
5-6 Δεκεμβρίου 2025
Ξενοδοχείο MonAsty



Α' ΠΑΝΕΠΙΣΤΗΜΙΑΚΗ
ΚΑΡΔΙΟΛΟΓΙΚΗ ΚΛΙΝΙΚΗ
Π.Γ.Ν. ΑΣΕΡΑ

Updates in
Cardiomyopathies
December 5-6, 2025
MonAsty Hotel
Thessaloniki / Greece



ACKNOWLEDGEMENTS



Consider how Galafold® may help

Keep Your Fabry Patients **MOVING FORWARD**

Ένδειξη

Το Galafold® ενδείκνυται για τη μακροχρόνια θεραπεία ενηλίκων και εφήβων ηλικίας 12 ετών και άνω με επιβεβαιωμένη διάγνωση της νόσου Fabry (ανεπάρκεια α-γαλακτοσιδάσης Α) με μετάλλαξη επιδεκτική θεραπειάς¹

Για την ΠΧΠ σκανάρετε τον κωδικό QR:



ΤΙΜΗ Ενδεικτική (Ν.Τ.):

GALAFOLD CAPS 123MG/CAP ΒΤx14: 12.434,65€

ΤΡΟΠΟΣ ΔΙΑΘΕΣΗΣ: Περιορισμένη ιατρική συνταγή από ειδικό ιατρό και παρακολούθηση κατά τη διάρκεια της αγωγής.

Περαιτέρω πληροφορίες διατίθενται από τη Γένεσις Φάρμα Α.Ε.

 **Galafold®**
(migalastat)

Από του στόματος χορήγηση, πολυσυστηματική επίδραση¹⁻⁵

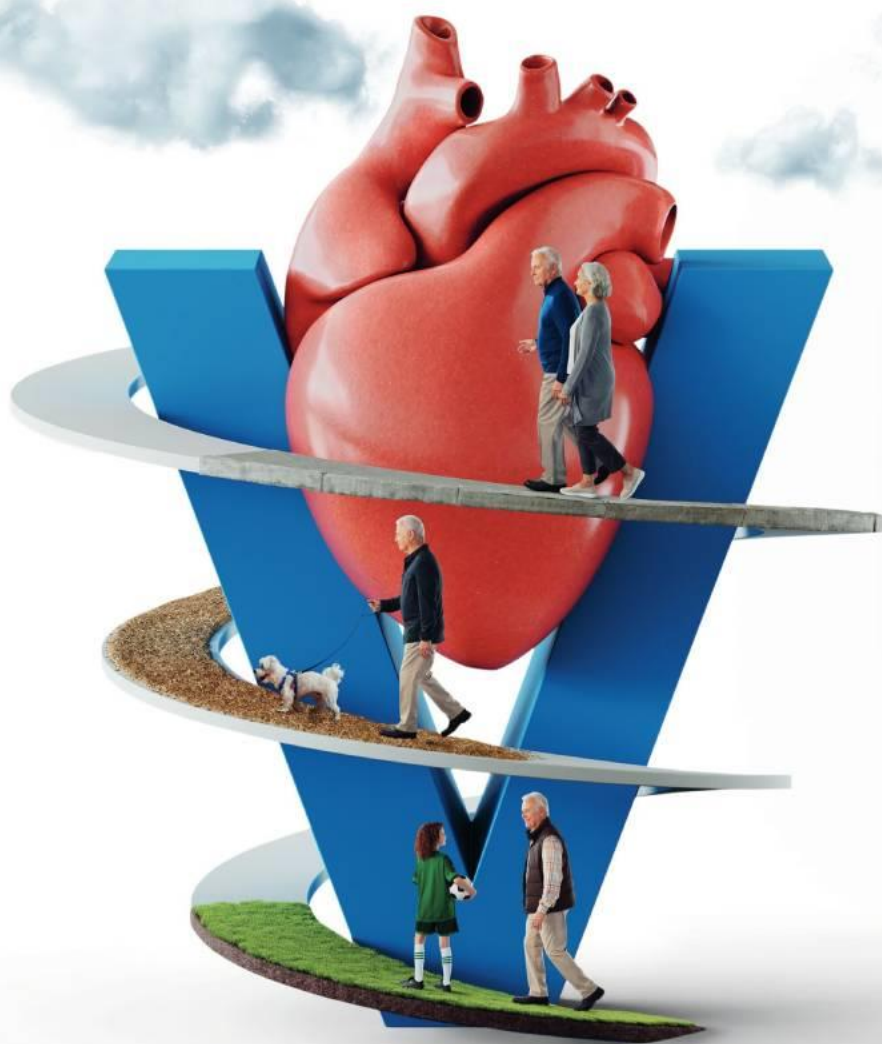
Βοηθήστε να γίνουν τα φάρμακα πιο ασφαλή και
Αναφέρετε ΟΛΕΣ τις ανεπιθύμητες ενέργειες
για ΟΛΑ τα φάρμακα
Συμπληρώνοντας την "ΚΙΤΡΙΝΗ ΚΑΡΤΑ"

1. Περίληψη Χαρακτηριστικών Προϊόντος Galafold® 2. Hughes DA, et al. *J Med Genet.* 2017;54(4):288-296 3. Feldt-Rasmussen U, et al. *Molecular Genetics and Metabolism*, 2020;131:219-228 4. Germain DP, et al. *N Engl J Med.* 2016;375(6):545- 555, 5. Riccio E, et al. *Eur J Hum Genet* 2020;28 (12):1662-1668.

 **Vyndaqel**[®]
(*tafamidis*)



Μάθετε περισσότερα στο
www.pfizerpro.gr/medicine/vyndaqel



Πριν τη συνταγογράφηση συμβουλευτείτε την Περίληψη Χαρακτηριστικών του Προϊόντος που διατίθεται από την εταιρεία.

▼ Το φάρμακο αυτό τελεί υπό συμπληρωματική παρακολούθηση. Αυτό θα επιτρέψει το γρήγορο προσδιορισμό νέων πληροφοριών ασφάλειας. Ζητείται από τους επαγγελματίες υγείας να αναφέρουν οποιεσδήποτε πιθανολογούμενες ανεπιθύμητες ενέργειες. Βλ. παράγραφο 4.8 της Περίληψης Χαρακτηριστικών του Προϊόντος για τον τρόπο αναφοράς ανεπιθύμητων ενεργειών

Βοηθήστε να γίνουν τα φάρμακα πιο ασφαλή και
Αναφέρετε
ΟΛΕΣ τις ανεπιθύμητες ενέργειες για
ΟΛΑ τα φάρμακα
Συμπληρώνοντας την «ΚΙΤΡΙΝΗ ΚΑΡΤΑ»





www.atg-labs.gr • www.biopathologiki.gr

Υψηλή Εξειδίκευση Άμεση Επιστημονική Υποστήριξη Μέγιστη Αξιοπιστία

- Μη Επεμβατικός Προγεννητικός Έλεγχος
- Προγεννητικός Γενετικός Έλεγχος
- Προεμφυτευτικός Γενετικός Έλεγχος
- Γενετικός Έλεγχος Υπογονιμότητας & Καθ'Εξιν Αποβολών
- Έλεγχος Γενετικών Νοσημάτων/Συνδρόμων
- Γενετικός Έλεγχος Κληρονομικού Καρκίνου & Συμπαγών Όγκων
- Εξειδικευμένες Εξετάσεις Βιοπαθολογίας
- Κυτταρολογικός Έλεγχος
- Κλινική Γενετική & Γενετική Συμβουλευτική



Access To Genome
CLINICAL LABORATORY GENETICS

Σκεφτείτε το Fabrazyme® Πρώτα¹



σε κάθε στάδιο
της νόσου.¹

Τρόπος διάθεσης: Με περιορισμένη ιατρική συνταγή: Μόνο για Νοσοκομειακή χρήση απο γιατρό με κατάλληλη ειδικευση και εμπειρία **Fabrazyme 35 mg κόνις** για πυκνό διάλυμα για παρασκευή διαλύματος προς έγχυση. Ν.Τ.: 2.178,34. **Fabrazyme 5 mg κόνις** για πυκνό διάλυμα για παρασκευή διαλύματος προς έγχυση. Ν.Τ.:336,43.

Βιβλιογραφία: 1. Περίληψη Χαρακτηριστικών του Προϊόντος.

Βοηθήστε να γίνουν τα φάρμακα πιο ασφαλή και
Αναφέρετε
ΟΛΕΣ τις ανεπιθύμητες ενέργειες για
ΟΛΑ τα φάρμακα
Συμπληρώνοντας την «ΚΙΤΡΙΝΗ ΚΑΡΤΑ»

sanofi

Sanofi-Aventis Μονοπρόσωπη ΑΕΒΕ
Λεωφ. Συγγρού 348, Κτίριο Α, 176 74, Καλλιθέα,
Τηλ.: 210 90 01 600, Fax: 210 92 49 129, www.sanofi.gr



Πριν τη συνταγογράφηση, συμβουλευτείτε
την Περίληψη Χαρακτηριστικών του
Προϊόντος, σκανάροντας το QR code
ή μπορείτε να τη ζητήσετε από την
εταιρία στο τηλ.: 210 9001600 ή στο
medicalinformation.greece@sanofi.com