



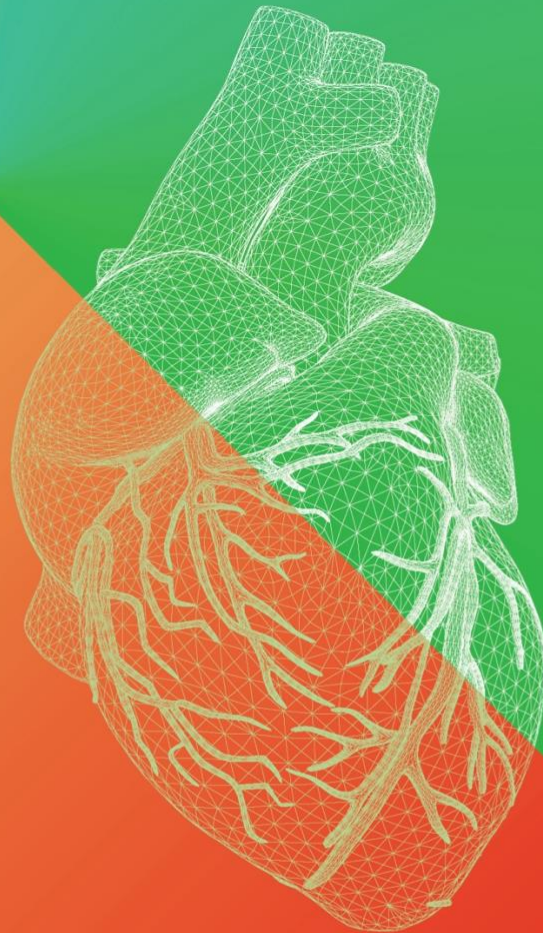
**ONASSIS  
HOSPITAL**

# **ADVANCED CORONARY THERAPIES 2026**

**FRIDAY, APRIL 17, 2026**

**ONASSIS HOSPITAL**

**ATHENS / GREECE**



**ΟΡΓΑΝΩΣΗ / ΓΡΑΜΜΑΤΕΙΑ / ΠΛΗΡΟΦΟΡΙΕΣ**

**INVENTICS A.E. / Medevents.gr / T. 2310 474 400 / E. info@medevents.gr / W. www.medevents.gr**

Αρ. Ειδ. Σημ. Λειτουργίας: ΕΟΤ: ΜΗΤΕ 0933Ε60000074600



FRIDAY, APRIL 17, 2026

ONASSIS HOSPITAL

ATHENS / GREECE

SCIENTIFIC PROGRAM | FRIDAY, APRIL 17, 2026

---

**09.00 – 09.15**

### **Welcome and Introduction**

Moderators: **V. Voudris, D.-V. Cokkinos, G. Athanassopoulos,  
F. Antoniou, Ch. Panagiotou**

Welcome Address

**I. Iakovou**

Welcome by the President of the Onassis Hospital

**J. Boletis**

### *Morning | Decision Making*

**09.15 – 10.30**

### **Live Decision Room I: Multivessel & Left Main Disease**

Moderators: **G. Dangas, I. Kanakakis, M. Balanika**

CASE PRESENTATIONS 1: **LIVE in a box** Full clinical & angiographic presentation

Operators: **I. Iakovou, P. Georgiadou, I. Kosmas, P. Perlepe, D. Tsoukalas**

Audience voting: PCI vs CABG vs Medical Therapy

Faculty debate before intervention

Interventional Cardiologist's view

**A. Zacharoulis**

Surgeon's view

**K. Perreas**

CASE PRESENTATIONS 2: **LIVE in a box** Full clinical & angiographic presentation

Operators: **I. Iakovou, P. Georgiadou, I. Kosmas, P. Perlepe, E. Girginoudi**

Panel of experts: **G. Samanidis, K. Kontrafouris, D. Avgerinos,**

**I. Nenekidis, St. Kyrzopoulos, V. Leontiadis**

**10.30 – 10.45**

### **Keynote Lecture**

Moderators: **D. Alexopoulos, G. Filippatos**

Optimizing Antiplatelet and Antithrombotic Therapies in 2026

**G. Dangas**



FRIDAY, APRIL 17, 2026

ONASSIS HOSPITAL

ATHENS / GREECE

SCIENTIFIC PROGRAM | FRIDAY, APRIL 17, 2026

---

**10.45 – 12.00**

## **Contemporary treatment of Left Main and Bifurcations**

Moderators: **N. Kafkas, Th. Vrachliotis**

Provisional vs upfront 2-stent

**A. Synetos**

DK-crush: default or selective?

**K. Triantafyllou**

Imaging-mandated or imaging-guided?

**A. Tsagkaris**

**CASE PRESENTATIONS 3: LIVE Left Main, Bifurcation Lesions**

Operators: **I. Iakovou, P. Georgiadou, I. Kosmas, P. Perlepe, D.Tsoukalas**

The current state and future technologies on coronary imaging

**G. Guagliumi**

LIVE Round Table / Panel Discussion

**G. Katsimagklis, I. Mamarelis, K. Aznaouridis,**

**P. Georgiadou, V. Leontiadis**

**12.00 – 12.15**

**Break**

*Midday | Execution*

**12.15 – 13.50**

## **Calcium: Identify, Modify, Respect**

Moderators: **M. Hamilos, K. Toutouzas**

Is FFR post PCI more important?

**G. Karamasis**

Atherectomy vs IVL: Decision algorithms

**K. Lampropoulos**

Imaging pitfalls in calcified lesions

**Ch. Bourantas**

Step-by-step case demonstration

**N. Spilias**



FRIDAY, APRIL 17, 2026

ONASSIS HOSPITAL

ATHENS / GREECE

## SCIENTIFIC PROGRAM | FRIDAY, APRIL 17, 2026

---

Antegrade-first vs early retrograde

**I. Tsiafoutis**

Radial-only vs femoral-ready

**G. Tsigkas**

Imaging in CTO: necessity or luxury?

**E. Sanidas**

LIVE Round Table / Panel Discussion

**K. Lampropoulos, G. Tsigkas, G. Gavrielatos, G. Latsios, A. Taleb**

13.50 – 14.00

Break

**14.30-17.30**

**Parallel Workshop (p. 8-9)**

**Cath Lab Excellence: Practical Training in Modern PCI Technologies**

### *Afternoon | Rescue*

**14.00 – 15.00**

**When Things Go Wrong: Complication Management**

Moderators: **G. Triantis, G. Pavlidis**

Left main dissection

**P. Dardas**

Coronary perforation

**G. Zarogiannis**

No-reflow

**C. Pappas**

Stent loss

**K. Triantafyllou**

\*Interactive bailout decision-making

Senior operators present one failure and one lesson that changed practice



FRIDAY, APRIL 17, 2026

ONASSIS HOSPITAL

ATHENS / GREECE

SCIENTIFIC PROGRAM | FRIDAY, APRIL 17, 2026

---

**15.00 – 15.45**

**CASE PRESENTATIONS 4: LIVE IN A BOX**

PCI in diffuse disease (Onassis Hospital)

Moderators: **G. Dangas, D. Benedetto, V. Voudris, G. Guagliumi**

Operators: **I. Iakovou, P. Georgiadou (TBC), I. Kosmas**

LIVE Round Table / Panel Discussion

**G. Tsiafoutis, A. Dimopoulos, A. Dagne, V. Leontiadis, I. Malakos (TBC)**

**15.45 – 16.00**

**Keynote Lecture**

Moderators: **G. Dangas, E. Vavuranakis**

Practical Rules for Complex PCI in 2026

**M. Brilakis**

**16.00 – 17.00**

**My Worst Case: Senior operators present one failure and one lesson that changed practice**

Moderators: **G. Gavrielatos, A. Manginas, G. Katsimaglis**

Cases Presented by **G. Latsios, N. Mezilis, K. Aznaouridis, A. Mastrokostopoulos, A. Taleb**

LIVE Round Table / Panel Discussion

**A. Chalapas, V. Psathas, G. Zarogiannis, S. Marinakis, E. Leontiadis, A. Marinakis**

**17.00 – 17.15**

**Keynote Lecture**

Moderators: **G. Tsigkas, I. Iakovou**

DEB/DCB in CAD – State of the Art: 2026

**D. Benedetto**

**17.15 – 17.30**

**Break**



FRIDAY, APRIL 17, 2026

ONASSIS HOSPITAL

ATHENS / GREECE

SCIENTIFIC PROGRAM | FRIDAY, APRIL 17, 2026

---

**17.30 – 20.30**

## **Challenging Cases & “Ask the Experts”**

Moderators: **G. Dangas, I. Iakovou**

Case Presentation 1 Onassis Hospital

**P. Perlepe**

Case Presentation 2 Tzaneio Hospital of Piraeus

**E. Bousoula**

Case Presentation 3 424 General Military Training Hospital

**F. Oikonomou**

Case Presentation 4 Sotiria Thoracic Diseases Hospital of Athens

**K. Kalogeras**

Case Presentation 5 General Hospital of Attica Sismanoglio

**S. Tzortzis**

Case Presentation 6 Tzaneion General Hospital of Piraeus

**A. Dimopoulos**

Case Presentation 7 Medditeraneo Hospital

**TBA**

Case Presentation 8 Thriasio General Hospital of Elefsina

**P. Bounas**

Case presentation 9 Ippokrateio General Hospital of Athens

**A. Papanikolaou**

Case Presentation 10 Henry Dunant Hospital Center

**V. Tzifos**

Case Presentation 11 Athens Naval Hospital

**A. Milkas**

Case presentation 12 Athens Medical Center

**A. Kalogeropoulos**

Case presentation 13 Onassis Hospital

**G. Zarogiannis**



FRIDAY, APRIL 17, 2026

ONASSIS HOSPITAL

ATHENS / GREECE

## SCIENTIFIC PROGRAM | FRIDAY, APRIL 17, 2026

---

Case presentation 14 Onassis Hospital

**D. Tsoukalas**

LIVE Round Table / Panel Discussion

**K. Triantafyllou, G. Malakos (TBC), A. Synetos, M. Chatzitofi**

Q & A. CONCLUDING REMARKS of the day

**20.45– 21.00**

**Consensus**

**I. Iakovou**



FRIDAY, APRIL 17, 2026

ONASSIS HOSPITAL

ATHENS / GREECE

## Parallel Track ACT 2026

### Cath Lab Excellence: Practical Training in Modern PCI Technologies

#### Devices, Skills & Team Performance

#### Στόχος

Πρακτική εκπαίδευση νοσηλευτών & τεχνολόγων

Standardization διαδικασιών

Βελτίωση teamwork σε complex PCI

Ανάδειξη του αιμοδυναμικού ως **high-performance unit**

---

#### Format

#### 2.5 – 3 ώρες | Rotating Stations (hands-on feel)

Μικρές ομάδες (5–8 άτομα)

Rotation κάθε 25–30'

---

#### Αναλυτικό Πρόγραμμα

14:30 – 15:00

#### Welcome & Objectives

Σύντομη εισαγωγή:

“Role of the Cath Lab Team in Complex PCI”

**Sp. Linardos**

#### Live Demonstration (Plenary) “Setup of a Complex PCI Case”

Room preparation & Device table organization

**I. Bouzala**

Radiation setup

**St. Papageorgiou**

Complications during CTO interventions: Nursing Role

**S. Chatzi**

Microcatheters

**M. Alexiou**



**15:00 – 17:00 ROTATING STATIONS** (4–5 stations × 25 min rotation)

## **STATION 1 Intravascular Imaging (OCT / IVUS)**

### **Focus:**

- Setup & calibration
- Catheter handling
- Contrast protocols
- Image acquisition pitfalls

### **Take-home:**

👉 “Good imaging = better PCI outcomes”

---

## **STATION 2 Intravascular Lithotripsy (IVL)**

### **Focus:**

- Device preparation
  - Balloon sizing
  - Energy delivery basics
  - Safety points
- 

## **STATION 3 Rotablation / Atherectomy**

### **Focus:**

- Console setup
  - Burr selection
  - Flush preparation
  - Team communication during run
- 

## **STATION 4 Orbital Atherectomy**

### **Focus:**

- Differences vs rotablation
- Device handling
- Indications



## FACULTY LIST

- D. Alexopoulos** / Professor Emeritus of Cardiology, National and Kapodistrian University of Athens
- F. Antoniou** / Advisor of medical education, Onassis Hospital
- G. Athanassopoulos** / MD, FESC, f. Director Cardiology Section, Onassis Hospital, Adjunct Professor European University Cyprus, Visiting Professor Cardiology Belgrade University
- D. Avgerinos** / Cardiac and Aortic Surgeon, Onassis Hospital
- K. Aznaouridis** / Interventional Cardiologist, Assistant Professor of Cardiology, Hippokraton Hospital, Athens Medical School, Greece
- M. Balanika** / Director Anesthesiologist, Department of Anesthesia, Onassis Hospital
- D. Benedetto** / MD, PhD
- J. Boletis** / Emeritus Professor of Internal Medicine-Nephrology, Kapodistrian University of Athens, President, Board of Directors, Onassis Hospital
- P. Bounas** / Consultant interventional Cardiologist, General hospital of Elefsina Thriassio, Athens, Greece
- C. Bourantas** / Interventional Cardiologist Barts Heart Centre NHS Trust, London UK, Professor, Queen Mary University of London
- E. Bousoula** / Interventional Cardiologist, Cardiology Department, Tzaneio Hospital of Piraeus, Athens Greece
- E. Brilakis** / Director, Center for Complex Coronary Interventions at Minneapolis Heart Institute
- A. Chalapas** / Interventional Cardiologist, Interventional Cardiology and THV Department, Athens Medical Center, Greece
- M. Chatzitofi** / Cardiologist, Onassis Hospital
- D.-V. Cokkinos** / Emeritus Professor of Cardiology, University of Athens, Scientific Associate Biomedical Research Foundation Academy of Athens
- A. Dagne** / MD, PhD, FESC, FSCAI, Interventional Cardiologist, Director of the Cardiology Department, "Thriassio" General Hospital of Elefsina, Athens
- G. Dangas** / MACC, MSCAI, FESC, FAHA, Professor of Cardiology & Vascular Surgery, Icahn School of Medicine at Mount Sinai, New York, USA, Professor of Cardiology, Athens Medical School, Athens University, Greece
- P. Dardas** / MD, FESC, Interventional Cardiologist, Director, Cardiovascular Laboratory, St. Luke's Hospital, Thessaloniki, Greece
- A. Dimopoulos** / Consultant Interventional Cardiologist, Cardiology Department, Tzaneio Hospital of Piraeus, Athens, Greece
- F. Economou** / MD, PhD, FEAPCI, Medical Colonel - Consultant Interventional Cardiologist - Cath Lab Director 424 Army General Hospital of Thessaloniki
- G. Filippatos** / Professor of Cardiology, National and Kapodistrian University of Athens, Chair, Department of Cardiology, Athens University Hospital Attikon
- G. Gavrielatos** / Consultant Interventional Cardiologist, Head of Complex & Structural Heart Interventions Unit, Cardiology Department, Tzaneio Hospital of Piraeus, Greece



- P. Georgiadou** / Consultant Cardiologist, Cardiology Department, Onassis Hospital, Athens, Greece
- E. Girginoudi** / Resident of Cardiology, Onassis Hospital
- G. Guagliumi** / Interventional Cardiologist, IRCCS Galeazzi Sant'Ambrogio Hospital - Milan, Italy
- M. Hamilos** / Associate Professor of Cardiology University General Hospital of Heraklion, Crete, Greece
- I. Iakovou** / Interventional Cardiologist, Director, Hemodynamic Studies & Interventional Cardiology Department, Onassis Hospital, Athens, Greece
- N. Kafkas** / Interventional Cardiologist, Coordinator Director of Cardiology Department, General Hospital KAT, Athens, Greece, Associate, Z Cardiology Department, Hygeia Hospital
- K. Kalogeras** / Assistant Professor of Cardiology, 3rd Department of Cardiology, 'Sotiria' Hospital, Athens, Greece
- A. Kalogeropoulos** / MD, PhD, FRCP, FESC, Interventional Cardiologist, Deputy Director 8th Cardiology Dept, Hygeia Hospital, Athens, Greece
- I. Kanakakis** / Cardiologist MD, PhD, Director of 3rd Cardiology Clinic Henry Dynan Hospital Center, Fmr. President of Hellenic Society of Cardiology
- G. Karamasis** / Interventional Cardiologist, Assistant Professor of Cardiology, Athens Medical School, 2nd Cardiology Department NKUA, University Hospital ATTIKON
- G. Katsimagklis** / Interventional Cardiologist, Director of 1st Cardiology Department & Cardiovascular Laboratory, Naval Hospital of Athens, Greece
- K. Kontrafouris** / Cardiac Surgeon MD, Msc, PhD, Consultant, Onassis Hospital
- I. Kosmas** / Specialist Cardiologist, Research Coordinator, Cath Lab, Onassis Hospital, Athens, Greece
- S. Kyrzopoulos** / Cardiologist, Cardiology Department, Onassis CSC, Athens, Greece
- K. Lampropoulos** / Ass. Professor of Cardiology, School of Medicine Democritus University of Thrace, Interventional Cardiologist, Athens, Greece
- G. Latsios** / MD, Senior Consultant, Interventional Cardiologist, 1st University Cardiology Department NKUA, Hippokration General Hospital of Athens
- E. Leontiadis** / Deputy Director, Department of Hemodynamic Studies & Invasive Cardiology, Heart Failure and Heart Transplantation Unit, Onassis Hospital, Athens, Greece
- Sp. Linardos** / RN, MSc, Head Nurse of Cath Lab, Onassis Hospital, Athens
- I. Malakos** / Consultant Cardiologist, Cardiology Department, Onassis Hospital
- I. Mamarelis** / Interventional Cardiologist, 401 General Military Hospital, Athens
- A. Manginas** / MD, FESC, FACC, Cardiologist, Director, Dept of Cardiology and Interventional Cardiology, Mediterraneo GH, Athens
- A. Marinakis** / Interventional Cardiologist, Athens
- S. Marinakis** / Cardiac Surgeon, Professor of Surgery ULB Brussels, CHU Charleroi Hôpital Marie Curie, Belgium, Director of Department of Minimally Invasive Cardiac Surgery, Athens Medical Center



FRIDAY, APRIL 17, 2026

ONASSIS HOSPITAL

ATHENS / GREECE

- A. Mastrokostopoulos** / Interventional Cardiologist, Deputy Director Cath Lab, Athens Naval Hospital, Greece
- N. Mezilis** / Interventional Cardiologist, St. Luke's Hospital, Thessaloniki, Greece
- A. Milkas** / M.D., MSc, MEAPCI, Interventional Cardiologist, Head of Infrared Unit, Athens Naval Hospital, OLV Hospital Aalst, Brussels
- I. Nenekidis** / Consultant Cardiac Surgeon, Cardiac Surgery Department and Heart and Lung Transplant Unit, Onassis Cardiac Surgery Center, Athens
- Ch. Panagiotou** / MSc, PhD, FESC, FHFA, Director of Nursing Services, Onassis Hospital, Athens
- St. Papageorgiou** / Technician, Onassis Hospital
- A. Papanikolaou** / Cardiologist, 1st Cardiology University Dept, Hippokration GH, Athens
- C. Pappas** / Cardiologist, Director SC, 2nd University Dept of Cardiology, GH "Attikon", Athens
- G. Pavlides** / MD, PhD, FACC, FESC, Professor Emeritus of Cardiovascular Medicine, Miscia Chair of Interventional Cardiology, University of Nebraska Medical Center, Omaha, NE, USA, Director, Fourth Cardiology Division, Henry Dunant Hospital, Athens, Greece.
- K. Perlepe** / MD, PhD, Interventional Cardiology Fellow, Onassis Hospital, Athens
- K. Perreas** / MD, PhD, FRCS C/Th, Cardiac Surgery, Director, 1st Dept of Cardiac Surgery, Onassis Hospital, Athens, Greece
- C. Psathas** / Interventional Cardiologist, MEDITERRANEO HOSPITAL, Athens
- G. Samanidis** / First Department of Cardiac Surgery, Onassis Hospital, Athens, Greece
- E. Sanidas** / Staff Attending Interventional Cardiologist, Department of Cardiology, LAIKO General Hospital, Athens
- N. Spiliias** / Assistant Professor, Interventional Cardiology, Program Director, Structural Heart Disease Fellowship, University of Miami Miller School of Medicine, USA
- A. Synetos** / MD, PhD, FESC, FACC, Interventional Cardiologist, Ass Professor of Cardiology EUC. 1st Department of Cardiology, University of Athens, Medical School, Greece
- A. Taleb** / Interventional Cardiologist, Athens Medical Center
- K. Toutouzas** / Professor of Cardiology, Athens University, 1st University Cardiology Department, Hippokration General Hospital, Athens, Greece, Director of Structural Heart Disease and Valve Disease Unit, HCS President
- K. Triantafyllou** / Consultant Interventional Cardiologist, G.H. "Evangelismos", Athens, Greece
- G. Triantis** / Interventional Cardiologist, Director, Sismanoglio – Amalia Fleming GH, Athens
- A. Tsangaris** / General Hospital of Athens Korgialeneio - Benakeio Hellenic Red Cross
- I. Tsiafoutis** / Interventional Cardiologist, Head of Dept of Cardiology, Red Cross Hospital, Athens, Greece
- G. Tsigkas** / Associate Professor, Interventional cardiologist, Patras University Hospital, Greece, Vice President Association of Interventional Cardiology, Hellenic Society of Cardiology
- D. Tsoukalas** / Cardiologist, Onassis Hospital, Athens, Greece
- V. Tzifos** / MD, PhD, Interventional Cardiologist, Director, Interventional Cardiology Department, Head of Cath Lab, Henry Dunant Hospital Center, Athens
- S. Tzortzis** / Consultant Interventional Cardiologist at Sismanoglion General Hospital of Attika



**M. Vavuranakis** / FESC, FACC, FSCAI, Professor of Cardiology, Athens University, Cardiology Dept, General Hospital "SOTIRIA" Athens, Adjunct Professor, Ohio State University, USA

**V. Voudris** / Consultant Interventional Cardiologist, Cardiology Department, Onassis Hospital, Athens

**Th. Vrachliotis** / Radiologist, Director of Medical Imaging, Onassis Cardiac Hospital, Athens, Greece

**A. Zacharoulis** / Interventional Cardiologist, "EVANGELISMOS" General Hospital, Athens

**G. Zarogiannis** / MD PhD - Interventional Cardiologist, Onassis Hospital



### SPONSORS ACKNOWLEDGEMENTS

---



# Medtronic



## M.S. Jacovides Hellas



## BIANEE A.E.

ΒΙΟΜΗΧΑΝΙΑ ΦΑΡΜΑΚΩΝ  
ΕΤΑΙΡΕΙΑ ΤΟΥ ΟΜΙΛΟΥ ΓΙΑΝΝΑΚΟΠΟΥΛΟΥ

BETTER INSIGHTS.  
BETTER OUTCOMES.

# IMAGING MATTERS

Routine use of intravascular imaging has shown to **improve patient outcomes**<sup>1</sup>

**25%** Reduction all cause mortality<sup>1</sup>

Follow up at 24.7 months (mean)

**53%** Reduction ST<sup>1</sup>



FEWER MAJOR  
DISSECTIONS<sup>2</sup>



FEWER MAJOR  
MALAPPOSITION<sup>2</sup>

**17%** Reduction MI<sup>1</sup>



FEWER MAJOR  
TISSUE PROTRUSION<sup>2</sup>



FEWER UNTREATED FOCAL  
REFERENCE DISEASE<sup>2</sup>

In OCTOBER, OCT guidance showed **superior clinical outcomes** in bifurcation lesions compared to angiography alone<sup>3</sup>



**28%** LOWER MACE<sup>3</sup>

In ILUMIEN IV, OCT guidance showed procedural and safety benefits compared to angiography alone<sup>2</sup>



**7%**  
LARGER MSA<sup>2</sup>



**64%**  
LOWER ST<sup>2</sup>

1. Stone, et al., Intravascular Imaging-guided coronary drug-eluting stent implantation: an updated network meta-analysis, The Lancet, doi.org/10.1016/ S0140-6736(23)02454-6

2. Z Ali et al., Optical Coherence Tomography-Guided versus Angiography-Guided PCI, NEJM, DOI: 10.1056/NEJMoa230586.

3. N.R. Holm et al., OCT or Angiography Guidance for PCI in Complex Bifurcation Lesions, NEJM, DOI: 10.1056/NEJMoa2307770.

CAUTION: This product is intended for use by or under the direction of a physician. Prior to use, reference the Instructions for Use, inside the product carton (when available) or at [vascular.eifu.abbott](https://vascular.eifu.abbott) or at [medical.abbott/manuals](https://medical.abbott/manuals) for more detailed information on Indications, Contraindications, Warnings, Precautions and Adverse Events. This material is intended for use with healthcare professionals only.

**Information contained herein for DISTRIBUTION outside of the U.S. ONLY. Check the regulatory status of the device in areas where CE marking is not the regulation in force.**

**Abbott International BVBA**

Park Lane, Culliganlaan 2B, 1831 Diegem, Belgium, Tel: 32.2.714.14.11

[www.cardiovascular.abbott](https://www.cardiovascular.abbott)

©2024 Abbott. All rights reserved. MAT-2403277 v1.0

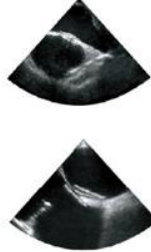


# Patent Foramen Ovale Closure Device

*ultrasept* PFO device has been developed for the transvenous closure for Patent Foramen Ovale.

The double round discs allow for easy deployment of the device as well as a super low profile.

The patented technology of the *ultrasept* allows for optimal positioning and repositioning of the device within the defect.



- Dual Circular Design
- Super Low Profile
- Conforms Naturally to any Septum
- Septal-Puncture Friendly
- Repositionable with the Defect
- Fully Retrievable



## *ultrasept* PFO Device

Order Number	LA-RA Diameter	Delivery Sheath
SO-02-0020	20mm	9F
SO-02-0025	25mm	9F
SO-02-0030	30mm	10F
SO-02-0035	35mm	11F

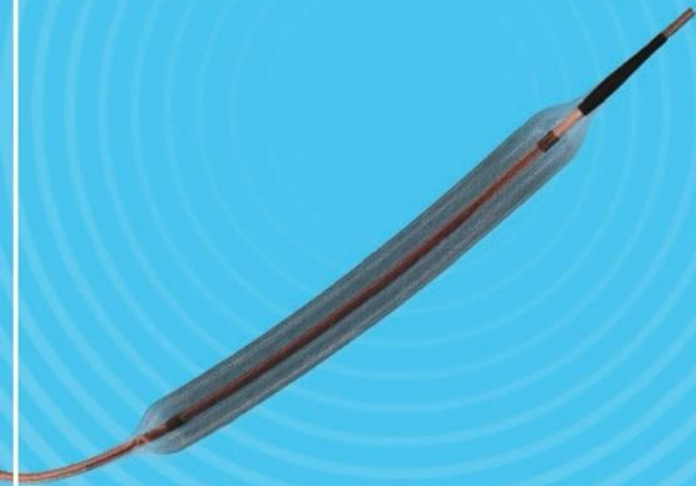
## *cardia* Delivery System

Product Code	Description	Sheath
AC-09-0801	9F Standard Kit	80 cm length with ASD curve
AC-10-0801	10F Standard Kit	80 cm length with ASD curve
AC-11-0801	11F Standard Kit	80 cm length with ASD curve



## MagicTouch SCB

SIROLIMUS COATED BALLOON CATHETER

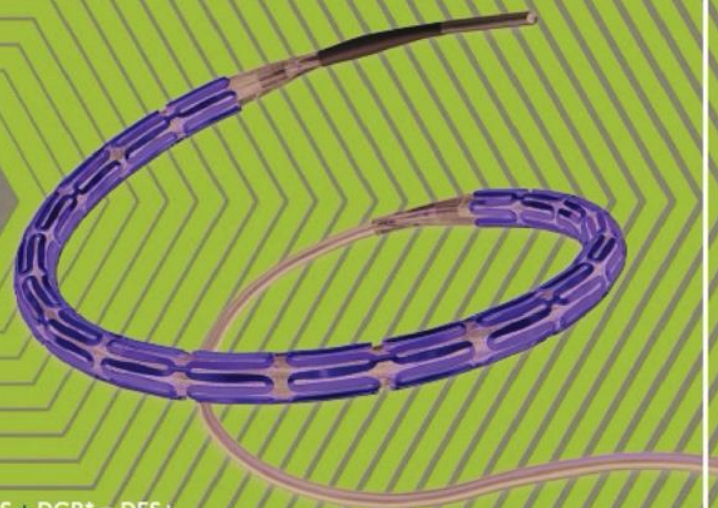


**SIROLIMUS**  
CORONARY ARTERY DISEASE



## ABLUMINUS DES+

SIROLIMUS ELUTING CORONARY STENT SYSTEM



DES + DCB\* = DES+



# Plavix

clopidogrel

**Η κλοπιδογρέλη σε συνδυασμό με ΑΣΟ ενδείκνυται σε ενήλικες ασθενείς με μετρίου έως υψηλού κινδύνου Παροδικό Ισχαιμικό Επεισόδιο (βαθμολογία ABCD2  $\geq 4$ ) ή έλασσον Ισχαιμικό Αγγειακό Εγκεφαλικό Επεισόδιο (NIHSS  $\leq 3$ )**

**Η θεραπεία με κλοπιδογρέλη και ΑΣΟ θα πρέπει να ξεκινά εντός 24 ωρών από το επεισόδιο και να συνεχίζεται για 21 ημέρες ακολουθούμενη από μονή αντιαιμοπεταλιακή θεραπεία.<sup>1</sup>**

#### ΣΥΝΤΟΜΟΓΡΑΦΙΕΣ:

ΑΣΟ = Ακετυλοσαλικυλικό Οξύ (acetyl salicylic acid)

ABCD2 = Ηλικία (Age), Αρτηριακή Πίεση (Blood pressure), Κλινικά Χαρακτηριστικά (Clinical features), Διάρκεια (Duration), και Διάγνωση Σακχαρώδη Διαβήτη τ2 (Diabetes mellitus diagnosis)

NIHSS = Κλίμακα Αγγειακού Εγκεφαλικού Επεισοδίου Εθνικών Ιδρυμάτων Υγείας (National Institutes of Health Stroke Scale)

**Τρόπος διάθεσης:** Φαρμακευτικό προϊόν για το οποίο απαιτείται ιατρική συνταγή

**PLAVIX F.CTAB 75MG/TAB ΒΤx28 σε BLISTERS Λ.Τ 12,77 €**

Το φάρμακο αυτό προορίζεται για χορήγηση σε ενήλικες ασθενείς

**Βιβλιογραφικές Παραπομπές:1.** Plavix SMPC με ημερομηνία αναθεώρησης 16/12/2022

PLAVIX



Πριν τη συνταγογράφηση συμβουλευτείτε την ΠΧΠ που θα βρείτε στο QR code. Η ΠΧΠ διατίθεται σε έντυπη μορφή μετά από αίτημα σας στην εταιρεία.

Προώθηση και διανομή



BIANEX A.E. - Έδρα : Οδός Βαρυμύμης 8, 14671 Ν. Ερυθραία, Κηφισιά, Ταχ. Θυρίδα 52894, 146 10 Ν. Ερυθραία  
Τηλ. : 210 8009111 • Fax: 210 8071573 • E-mail: mailbox@vianex.gr • WEBSITE: www.vianex.gr  
ΘΕΣΣΑΛΟΝΙΚΗ: Ακαδημίου 113, 562 24 Εύσσομος Θεσσαλονίκης, Τηλ.: 2310 861683

ΑΡ. Γ.Ε.ΜΗ. 000274201000

Βοηθήστε να γίνουν τα φάρμακα πιο ασφαλή και Αναφέρετε ΟΛΕΣ τις ανεπιθύμητες ενέργειες για ΟΛΑ τα φάρμακα Συμπληρώνοντας την «ΚΙΤΡΙΝΗ ΚΑΡΤΑ»

Κάτοχος Άδειας Κυκλοφορίας / Τοπικός Αντιπρόσωπος

sanofi

Sanofi-Aventis Μονοπρόσωπη ΑΕΒΕ,  
Λεωφ. Συγγρού 348, Κτήριο Α, 17674 Καλλιθέα,  
Τηλ. 210 90 01 600, www.sanofi.gr  
MedicalInformation.Greece@sanofi.com