



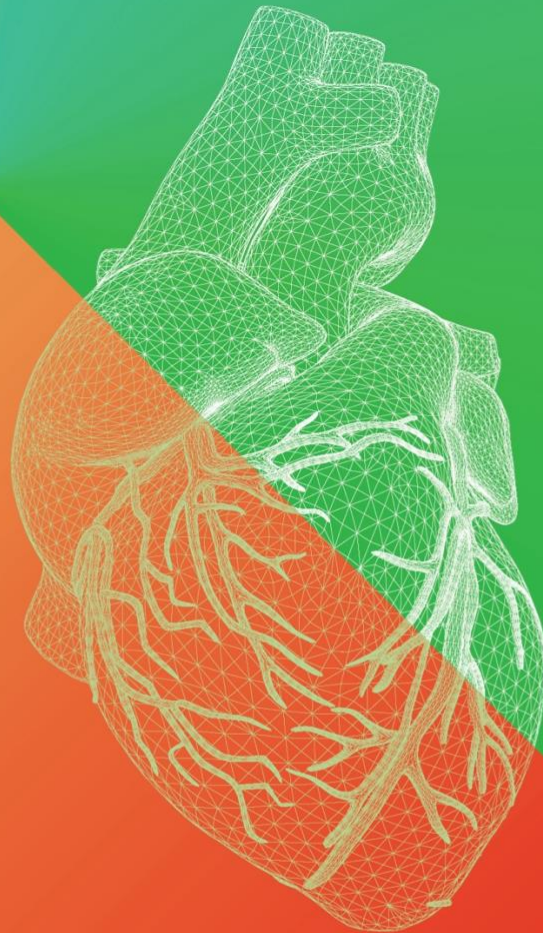
**ONASSIS
HOSPITAL**

ADVANCED CORONARY THERAPIES 2026

FRIDAY, APRIL 17, 2026

ONASSIS HOSPITAL

ATHENS / GREECE



ΟΡΓΑΝΩΣΗ / ΓΡΑΜΜΑΤΕΙΑ / ΠΛΗΡΟΦΟΡΙΕΣ

INVENTICS A.E. / Medevents.gr / T. 2310 474 400 / E. info@medevents.gr / W. www.medevents.gr

Αρ. Ειδ. Σημ. Λειτουργίας: ΕΟΤ: ΜΗΤΕ 0933Ε60000074600



FRIDAY, APRIL 17, 2026

ONASSIS HOSPITAL

ATHENS / GREECE

SCIENTIFIC PROGRAM | FRIDAY, APRIL 17, 2026

09.00 – 09.15

Welcome and Introduction

Moderators: **V. Voudris, D.-V. Cokkinos, G. Athanassopoulos,
F. Antoniou, Ch. Panagiotou**

Welcome Address

I. Iakovou

Welcome by the President of the Onassis Hospital

J. Boletis

Morning | Decision Making

09.15 – 10.30

Live Decision Room I: Multivessel & Left Main Disease

Moderators: **G. Dangas, I. Kanakakis, M. Balanika**

CASE PRESENTATIONS 1: **LIVE in a box** Full clinical & angiographic presentation

Operators: **I. Iakovou, P. Georgiadou, I. Kosmas, P. Perlepe, D. Tsoukalas**

Audience voting: PCI vs CABG vs Medical Therapy

Faculty debate before intervention

Interventional Cardiologist's view

A. Zacharoulis

Surgeon's view

K. Perreas

CASE PRESENTATIONS 2: **LIVE in a box** Full clinical & angiographic presentation

Operators: **I. Iakovou, P. Georgiadou, I. Kosmas, P. Perlepe, E. Girginoudi**

Panel of experts: **G. Samanidis, K. Kontrafouris, D. Avgerinos,**

I. Nenekidis, St. Kyrzopoulos, V. Leontiadis

10.30 – 10.45

Keynote Lecture

Moderators: **D. Alexopoulos, G. Filippatos**

Optimizing Antiplatelet and Antithrombotic Therapies in 2026

G. Dangas



FRIDAY, APRIL 17, 2026

ONASSIS HOSPITAL

ATHENS / GREECE

SCIENTIFIC PROGRAM | FRIDAY, APRIL 17, 2026

10.45 – 12.00

Contemporary treatment of Left Main and Bifurcations

Moderators: **G. Dangas, G. Guagliumi**

Provisional vs upfront 2-stent

A. Synetos

DK-crush: default or selective?

K. Triantafyllou

Imaging-mandated or imaging-guided?

A. Tsagkaris

CASE PRESENTATIONS 3: LIVE Left Main, Bifurcation Lesions

Operators: **I. Iakovou, P. Georgiadou, I. Kosmas, P. Perlepe, D.Tsoukalas**

The current state and future technologies on coronary imaging

G. Guagliumi

LIVE Round Table / Panel Discussion

G. Katsimagklis, I. Mamarelis, K. Aznaouridis,

P. Georgiadou, V. Leontiadis

12.00 – 12.15

Break

Midday | Execution

12.15 – 13.50

Calcium: Identify, Modify, Respect

Moderators: **M. Hamilos, K. Toutouzas**

Is FFR post PCI more important?

G. Karamasis

Atherectomy vs IVL: Decision algorithms

K. Lampropoulos

Imaging pitfalls in calcified lesions

Ch. Bourantas

Step-by-step case demonstration

N. Spilias



FRIDAY, APRIL 17, 2026

ONASSIS HOSPITAL

ATHENS / GREECE

SCIENTIFIC PROGRAM | FRIDAY, APRIL 17, 2026

Antegrade-first vs early retrograde

I. Tsiafoutis

Radial-only vs femoral-ready

G. Tsigkas

Imaging in CTO: necessity or luxury?

E. Sanidas

LIVE Round Table / Panel Discussion

K. Lampropoulos, G. Tsigkas, G. Gavrielatos, G. Latsios, A. Taleb

13.50 – 14.00

Break

14.30-17.30

Parallel Workshop (p. 8-9)

Cath lab performance lab:

Advancing Nursing and alliant professional performance in complex PCI

Afternoon | Rescue

14.00 – 15.00

When Things Go Wrong: Complication Management

Moderators: **G. Triantis, G. Pavlidis**

Left main dissection

P. Dardas

Coronary perforation

G. Zarogiannis

No-reflow

C. Pappas

Stent loss

K. Triantafyllou

*Interactive bailout decision-making

Senior operators present one failure and one lesson that changed practice



FRIDAY, APRIL 17, 2026

ONASSIS HOSPITAL

ATHENS / GREECE

SCIENTIFIC PROGRAM | FRIDAY, APRIL 17, 2026

15.00 – 15.45

CASE PRESENTATIONS 4: LIVE IN A BOX

PCI in diffuse disease (Onassis Hospital)

Moderators: **G. Dangas, D. Benedetto, V. Voudris, G. Guagliumi**

Operators: **I. Iakovou, P. Georgiadou (TBC), I. Kosmas**

LIVE Round Table / Panel Discussion

G. Tsiafoutis, A. Dimopoulos, A. Dagne, V. Leontiadis, I. Malakos (TBC)

15.45 – 16.00

Keynote Lecture

Moderators: **G. Dangas, E. Vavuranakis**

Practical Rules for Complex PCI in 2026

M. Brilakis

16.00 – 17.00

My Worst Case: Senior operators present one failure and one lesson that changed practice

Moderators: **G. Gavrielatos, A. Manginas, G. Katsimaglis**

Cases Presented by **G. Latsios, N. Mezilis, K. Aznaouridis, A. Mastrokostopoulos, A. Taleb**

LIVE Round Table / Panel Discussion

A. Chalapas, V. Psathas, G. Zarogiannis, S. Marinakis, E. Leontiadis, A. Marinakis

17.00 – 17.15

Keynote Lecture

Moderators: **G. Tsigkas, I. Iakovou**

DEB/DCB in CAD – State of the Art: 2026

D. Benedetto

17.15 – 17.30

Break



FRIDAY, APRIL 17, 2026

ONASSIS HOSPITAL

ATHENS / GREECE

SCIENTIFIC PROGRAM | FRIDAY, APRIL 17, 2026

17.30 – 20.30

Challenging Cases & “Ask the Experts”

Moderators: **G. Dangas, I. Iakovou**

Case Presentation 1 Onassis Hospital

P. Perlepe

Case Presentation 2 Tzaneio Hospital of Piraeus

E. Bousoula

Case Presentation 3 424 General Military Training Hospital

F. Oikonomou

Case Presentation 4 Sotiria Thoracic Diseases Hospital of Athens

K. Kalogeras

Case Presentation 5 General Hospital of Attica Sismanoglio

S. Tzortzis

Case Presentation 6 Tzaneion General Hospital of Piraeus

A. Dimopoulos

Case Presentation 7 Medditeraneo Hospital

TBA

Case Presentation 8 Thriasio General Hospital of Elefsina

P. Bounas

Case presentation 9 Ippokrateio General Hospital of Athens

A. Papanikolaou

Case Presentation 10 Henry Dunant Hospital Center

V. Tzifos

Case Presentation 11 Athens Naval Hospital

A. Milkas

Case presentation 12 Athens Medical Center

A. Kalogeropoulos

Case presentation 13 Onassis Hospital

G. Zarogiannis



FRIDAY, APRIL 17, 2026

ONASSIS HOSPITAL

ATHENS / GREECE

SCIENTIFIC PROGRAM | FRIDAY, APRIL 17, 2026

Case presentation 14 Onassis Hospital

D. Tsoukalas

LIVE Round Table / Panel Discussion

K. Triantafyllou, G. Malakos (TBC), A. Synetos, M. Chatzitofi

Q & A. CONCLUDING REMARKS of the day

20.45– 21.00

Consensus

I. Iakovou



Parallel Track ACT 2026

Cath lab performance lab:

Advancing Nursing and alliant professional performance in complex PCI

14:30 – 15:30

Welcome Address

Ch. Panagiotou

Welcome & Objectives

“Role of the Cath Lab Team in Complex PCI”

Sp. Linardos

Live Demonstration (Plenary) “Setup of a Complex PCI Case”

Room preparation & Device table organization

I. Bouzala

Radiation setup

St. Papageorgiou

Complications during CTO interventions: Nursing Role

S. Chatzi

15:30 – 17:30 ROTATING STATIONS (4–5 stations × 25 min rotation)

Microcatheters

M. Alexiou

STATION 1 Intravascular Imaging (OCT / IVUS)

Focus:

- Setup & calibration
- Catheter handling
- Contrast protocols
- Image acquisition pitfalls



Parallel Track ACT 2026

Cath lab performance lab:

Advancing Nursing and alliant professional performance in complex PCI

STATION 2 Intravascular Lithotripsy (IVL)

Focus:

- Device preparation
 - Balloon sizing
 - Energy delivery basics
 - Safety points
-

STATION 3 Rotablation / Atherectomy

Focus:

- Console setup
 - Burr selection
 - Flush preparation
 - Team communication during run
-

STATION 4 Orbital Atherectomy

Focus:

- Differences vs rotablation
- Device handling
- Indications



FACULTY LIST

- D. Alexopoulos** / Professor Emeritus of Cardiology, National and Kapodistrian University of Athens
- F. Antoniou** / Advisor of medical education, Onassis Hospital
- G. Athanassopoulos** / MD, FESC, f. Director Cardiology Section, Onassis Hospital, Adjunct Professor European University Cyprus, Visiting Professor Cardiology Belgrade University
- D. Avgerinos** / Cardiac and Aortic Surgeon, Onassis Hospital
- K. Aznaouridis** / Interventional Cardiologist, Assistant Professor of Cardiology, Hippokraton Hospital, Athens Medical School, Greece
- M. Balanika** / Director Anesthesiologist, Department of Anesthesia, Onassis Hospital
- D. Benedetto** / MD, PhD
- J. Boletis** / Emeritus Professor of Internal Medicine-Nephrology, Kapodistrian University of Athens, President, Board of Directors, Onassis Hospital
- P. Bounas** / Consultant interventional Cardiologist, General hospital of Elefsina Thriassio, Athens, Greece
- C. Bourantas** / Interventional Cardiologist Barts Heart Centre NHS Trust, London UK, Professor, Queen Mary University of London
- E. Bousoula** / Interventional Cardiologist, Cardiology Department, Tzaneio Hospital of Piraeus, Athens Greece
- I. Bouzala** / Rn, Cath Lab, Onassis Hospital, Athens
- E. Brilakis** / Director, Center for Complex Coronary Interventions at Minneapolis Heart Institute
- A. Chalapas** / Interventional Cardiologist, Interventional Cardiology and THV Department, Athens Medical Center, Greece
- S. Chatzi** / Rn, Msc, Cath Lab, Onassis Hospital, Athens
- M. Chatzitofi** / Cardiologist, Onassis Hospital
- D.-V. Cokkinos** / Emeritus Professor of Cardiology, University of Athens, Scientific Associate Biomedical Research Foundation Academy of Athens
- A. Dagne** / MD, PhD, FESC, FSCAI, Interventional Cardiologist, Director of the Cardiology Department, "Thriassio" General Hospital of Elefsina, Athens
- G. Dangas** / MACC, MSCAI, FESC, FAHA, Professor of Cardiology & Vascular Surgery, Icahn School of Medicine at Mount Sinai, New York, USA, Professor of Cardiology, Athens Medical School, Athens University, Greece
- P. Dardas** / MD, FESC, Interventional Cardiologist, Director, Cardiovascular Laboratory, St. Luke's Hospital, Thessaloniki, Greece
- A. Dimopoulos** / Consultant Interventional Cardiologist, Cardiology Department, Tzaneio Hospital of Piraeus, Athens, Greece
- F. Economou** / MD, PhD, FEAPCI, Medical Colonel - Consultant Interventional Cardiologist - Cath Lab Director 424 Army General Hospital of Thessaloniki
- G. Filippatos** / Professor of Cardiology, National and Kapodistrian University of Athens, Chair, Department of Cardiology, Athens University Hospital Attikon
- G. Gavrielatos** / Consultant Interventional Cardiologist, Head of Complex & Structural Heart Interventions Unit, Cardiology Department, Tzaneio Hospital of Piraeus, Greece



FRIDAY, APRIL 17, 2026

ONASSIS HOSPITAL

ATHENS / GREECE

- P. Georgiadou** / Consultant Cardiologist, Cardiology Department, Onassis Hospital, Athens, Greece
- E. Girginoudi** / Resident of Cardiology, Onassis Hospital
- G. Guagliumi** / Interventional Cardiologist, IRCCS Galeazzi Sant'Ambrogio Hospital - Milan, Italy
- M. Hamilos** / Associate Professor of Cardiology University General Hospital of Heraklion, Crete, Greece
- I. Iakovou** / Interventional Cardiologist, Director, Hemodynamic Studies & Interventional Cardiology Department, Onassis Hospital, Athens, Greece
- K. Kalogeras** / Assistant Professor of Cardiology, 3rd Department of Cardiology, 'Sotiria' Hospital, Athens, Greece
- A. Kalogeropoulos** / MD, PhD, FRCP, FESC, Interventional Cardiologist, Deputy Director 8th Cardiology Dept, Hygeia Hospital, Athens, Greece
- I. Kanakakis** / Cardiologist MD, PhD, Director of 3rd Cardiology Clinic Henry Dynan Hospital Center, Fmr. President of Hellenic Society of Cardiology
- G. Karamasis** / Interventional Cardiologist, Assistant Professor of Cardiology, Athens Medical School, 2nd Cardiology Department NKUA, University Hospital ATTIKON
- G. Katsimagklis** / Interventional Cardiologist, Director of 1st Cardiology Department & Cardiovascular Laboratory, Naval Hospital of Athens, Greece
- K. Kontrafouris** / Cardiac Surgeon MD, Msc, PhD, Consultant, Onassis Hospital
- I. Kosmas** / Specialist Cardiologist, Research Coordinator, Cath Lab, Onassis Hospital, Athens, Greece
- S. Kyrzopoulos** / Cardiologist, Cardiology Department, Onassis CSC, Athens, Greece
- K. Lampropoulos** / Ass. Professor of Cardiology, School of Medicine Democritus University of Thrace, Interventional Cardiologist, Athens, Greece
- G. Latsios** / MD, Senior Consultant, Interventional Cardiologist, 1st University Cardiology Department NKUA, Hippokration General Hospital of Athens
- E. Leontiadis** / Deputy Director, Department of Hemodynamic Studies & Invasive Cardiology, Heart Failure and Heart Transplantation Unit, Onassis Hospital, Athens, Greece
- Sp. Linardos** / RN, MSc, Head Nurse of Cath Lab, Onassis Hospital, Athens
- I. Malakos** / Consultant Cardiologist, Cardiology Department, Onassis Hospital
- I. Mamarelis** / Interventional Cardiologist, 401 General Military Hospital, Athens
- A. Manginas** / MD, FESC, FACC, Cardiologist, Director, Dept of Cardiology and Interventional Cardiology, Mediterraneo GH, Athens
- A. Marinakis** / Interventional Cardiologist, Athens
- S. Marinakis** / Cardiac Surgeon, Professor of Surgery ULB Brussels, CHU Charleroi Hôpital Marie Curie, Belgium, Director of Department of Minimally Invasive Cardiac Surgery, Athens Medical Center



FRIDAY, APRIL 17, 2026

ONASSIS HOSPITAL

ATHENS / GREECE

- A. Mastrokostopoulos** / Interventional Cardiologist, Deputy Director Cath Lab, Athens Naval Hospital, Greece
- N. Mezilis** / Interventional Cardiologist, St. Luke's Hospital, Thessaloniki, Greece
- A. Milkas** / M.D., MSc, MEAPCI, Interventional Cardiologist, Head of Infrared Unit, Athens Naval Hospital, OLV Hospital Aalst, Brussels
- I. Nenekidis** / Consultant Cardiac Surgeon, Cardiac Surgery Department and Heart and Lung Transplant Unit, Onassis Cardiac Surgery Center, Athens
- Ch. Panagiotou** / MSc, PhD, FESC, FHFA, Director of Nursing Services, Onassis Hospital, Athens
- St. Papageorgiou** / Technician, Onassis Hospital
- A. Papanikolaou** / Cardiologist, 1st Cardiology University Dept, Hippokration GH, Athens
- C. Pappas** / Cardiologist, Director SC, 2nd University Dept of Cardiology, GH "Attikon", Athens
- G. Pavlides** / MD, PhD, FACC, FESC, Professor Emeritus of Cardiovascular Medicine, Miscia Chair of Interventional Cardiology, University of Nebraska Medical Center, Omaha, NE, USA, Director, Fourth Cardiology Division, Henry Dunant Hospital, Athens, Greece.
- K. Perlepe** / MD, PhD, Interventional Cardiology Fellow, Onassis Hospital, Athens
- K. Perreas** / MD, PhD, FRCS C/Th, Cardiac Surgery, Director, 1st Dept of Cardiac Surgery, Onassis Hospital, Athens, Greece
- C. Psathas** / Interventional Cardiologist, MEDITERRANEO HOSPITAL, Athens
- G. Samanidis** / First Department of Cardiac Surgery, Onassis Hospital, Athens, Greece
- E. Sanidas** / Staff Attending Interventional Cardiologist, Department of Cardiology, LAIKO General Hospital, Athens
- N. Spilias** / Assistant Professor, Interventional Cardiology, Program Director, Structural Heart Disease Fellowship, University of Miami Miller School of Medicine, USA
- A. Synetos** / MD, PhD, FESC, FACC, Interventional Cardiologist, Ass Professor of Cardiology EUC. 1st Department of Cardiology, University of Athens, Medical School, Greece
- A. Taleb** / Interventional Cardiologist, Athens Medical Center
- K. Toutouzas** / Professor of Cardiology, Athens University, 1st University Cardiology Department, Hippokration General Hospital, Athens, Greece, Director of Structural Heart Disease and Valve Disease Unit, HCS President
- K. Triantafyllou** / Consultant Interventional Cardiologist, G.H. "Evangelismos", Athens, Greece
- G. Triantis** / Interventional Cardiologist, Director, Sismanoglio – Amalia Fleming GH, Athens
- A. Tsangaris** / General Hospital of Athens Korgialeneio - Benakeio Hellenic Red Cross
- I. Tsiafoutis** / Interventional Cardiologist, Head of Dept of Cardiology, Red Cross Hospital, Athens, Greece
- G. Tsigkas** / Associate Professor, Interventional cardiologist, Patras University Hospital, Greece, Vice President Association of Interventional Cardiology, Hellenic Society of Cardiology
- D. Tsoukalas** / Cardiologist, Onassis Hospital, Athens, Greece
- V. Tzifos** / MD, PhD, Interventional Cardiologist, Director, Interventional Cardiology Department, Head of Cath Lab, Henry Dunant Hospital Center, Athens
- S. Tzortzis** / Consultant Interventional Cardiologist at Sismanoglion General Hospital of Attika



M. Vavuranakis / FESC, FACC, FSCAI, Professor of Cardiology, Athens University, Cardiology Dept, General Hospital "SOTIRIA" Athens, Adjunct Professor, Ohio State University, USA

V. Voudris / Consultant Interventional Cardiologist, Cardiology Department, Onassis Hospital, Athens

A. Zacharoulis / Interventional Cardiologist, "EVANGELISMOS" General Hospital, Athens

G. Zarogiannis / MD PhD - Interventional Cardiologist, Onassis Hospital



SPONSORS ACKNOWLEDGEMENTS



Medtronic



M.S. Jacovides Hellas



BIANEE A.E.

ΒΙΟΜΗΧΑΝΙΑ ΦΑΡΜΑΚΩΝ
ΕΤΑΙΡΕΙΑ ΤΟΥ ΟΜΙΛΟΥ ΓΙΑΝΝΑΚΟΠΟΥΛΟΥ

BETTER INSIGHTS.
BETTER OUTCOMES.

IMAGING MATTERS

Routine use of intravascular imaging has shown to **improve patient outcomes**¹

25% Reduction all cause mortality¹

Follow up at 24.7 months (mean)

53% Reduction ST¹



FEWER MAJOR
DISSECTIONS²



FEWER MAJOR
MALAPPOSITION²

17% Reduction MI¹



FEWER MAJOR
TISSUE PROTRUSION²



FEWER UNTREATED FOCAL
REFERENCE DISEASE²

In OCTOBER, OCT guidance showed **superior clinical outcomes** in bifurcation lesions compared to angiography alone³



28% LOWER MACE³

In ILUMIEN IV, OCT guidance showed procedural and safety benefits compared to angiography alone²



7%
LARGER MSA²



64%
LOWER ST²

1. Stone, et al., Intravascular Imaging-guided coronary drug-eluting stent implantation: an updated network meta-analysis, The Lancet, doi.org/10.1016/ S0140-6736(23)02454-6

2. Z Ali et al., Optical Coherence Tomography-Guided versus Angiography-Guided PCI, NEJM, DOI: 10.1056/NEJMoa230586.

3. N.R. Holm et al., OCT or Angiography Guidance for PCI in Complex Bifurcation Lesions, NEJM, DOI: 10.1056/NEJMoa2307770.

CAUTION: This product is intended for use by or under the direction of a physician. Prior to use, reference the Instructions for Use, inside the product carton (when available) or at vascular.eifu.abbott or at medical.abbott/manuals for more detailed information on Indications, Contraindications, Warnings, Precautions and Adverse Events. This material is intended for use with healthcare professionals only.

Information contained herein for DISTRIBUTION outside of the U.S. ONLY. Check the regulatory status of the device in areas where CE marking is not the regulation in force.

Abbott International BVBA
Park Lane, Culliganlaan 2B, 1831 Diegem, Belgium, Tel: 32.2.714.14.11

www.cardiovascular.abbott

©2024 Abbott. All rights reserved. MAT-2403277 v1.0

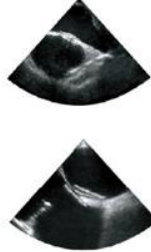


Patent Foramen Ovale Closure Device

ultrasept PFO device has been developed for the transvenous closure for Patent Foramen Ovale.

The double round discs allow for easy deployment of the device as well as a super low profile.

The patented technology of the *ultrasept* allows for optimal positioning and repositioning of the device within the defect.



- Dual Circular Design
- Super Low Profile
- Conforms Naturally to any Septum
- Septal-Puncture Friendly
- Repositionable with the Defect
- Fully Retrievable



ultrasept PFO Device

Order Number	LA-RA Diameter	Delivery Sheath
SO-02-0020	20mm	9F
SO-02-0025	25mm	9F
SO-02-0030	30mm	10F
SO-02-0035	35mm	11F

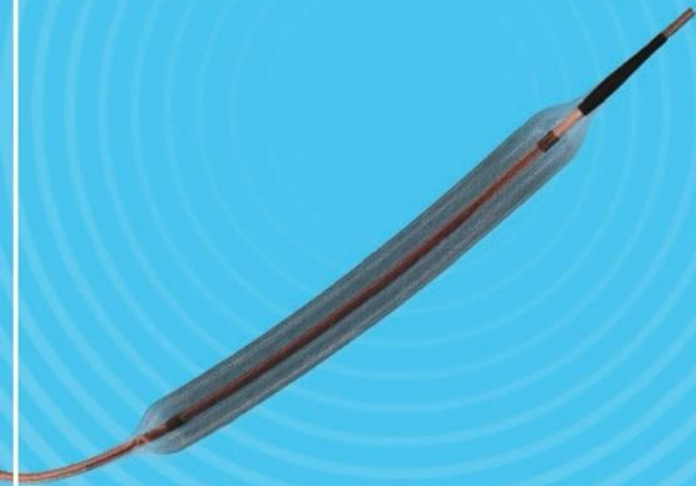
cardia Delivery System

Product Code	Description	Sheath
AC-09-0801	9F Standard Kit	80 cm length with ASD curve
AC-10-0801	10F Standard Kit	80 cm length with ASD curve
AC-11-0801	11F Standard Kit	80 cm length with ASD curve



MagicTouch SCB

SIROLIMUS COATED BALLOON CATHETER

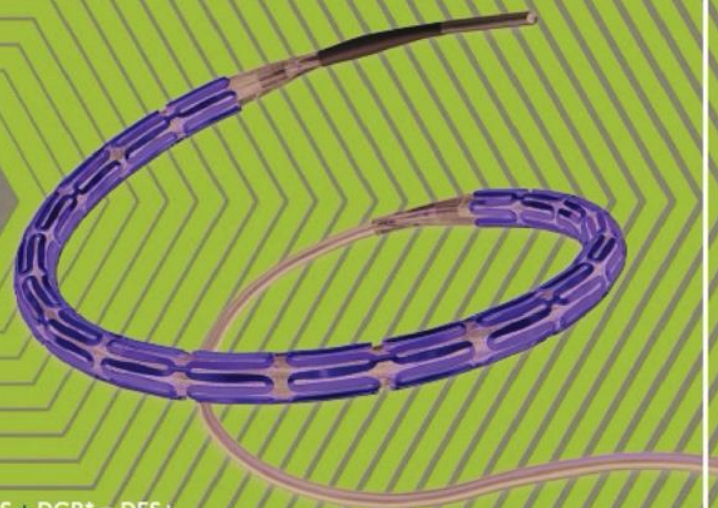


SIROLIMUS
CORONARY ARTERY DISEASE



ABLUMINUS DES+

SIROLIMUS ELUTING CORONARY STENT SYSTEM



DES + DCB* = DES+



Plavix

clopidogrel

Η κλοπιδογρέλη σε συνδυασμό με ΑΣΟ ενδείκνυται σε ενήλικες ασθενείς με μετρίου έως υψηλού κινδύνου Παροδικό Ισχαιμικό Επεισόδιο (βαθμολογία ABCD2 \geq 4) ή έλασσον Ισχαιμικό Αγγειακό Εγκεφαλικό Επεισόδιο (NIHSS \leq 3)

Η θεραπεία με κλοπιδογρέλη και ΑΣΟ θα πρέπει να ξεκινά εντός 24 ωρών από το επεισόδιο και να συνεχίζεται για 21 ημέρες ακολουθούμενη από μονή αντιαιμοπεταλιακή θεραπεία.¹

ΣΥΝΤΟΜΟΓΡΑΦΙΕΣ:

ΑΣΟ = Ακετυλοσαλικυλικό Οξύ (acetyl salicylic acid)

ABCD2 = Ηλικία (Age), Αρτηριακή Πίεση (Blood pressure), Κλινικά Χαρακτηριστικά (Clinical features), Διάρκεια (Duration), και Διάγνωση Σακχαρώδη Διαβήτη τ2 (Diabetes mellitus diagnosis)

NIHSS = Κλίμακα Αγγειακού Εγκεφαλικού Επεισοδίου Εθνικών Ιδρυμάτων Υγείας (National Institutes of Health Stroke Scale)

Τρόπος διάθεσης: Φαρμακευτικό προϊόν για το οποίο απαιτείται ιατρική συνταγή

PLAVIX F.CTAB 75MG/TAB ΒΤx28 σε BLISTERS Λ.Τ 12,77 €

Το φάρμακο αυτό προορίζεται για χορήγηση σε ενήλικες ασθενείς

Βιβλιογραφικές Παραπομπές:1. Plavix SMPC με ημερομηνία αναθεώρησης 16/12/2022

PLAVIX



Πριν τη συνταγογράφηση συμβουλευτείτε την ΠΧΠ που θα βρείτε στο QR code. Η ΠΧΠ διατίθεται σε έντυπη μορφή μετά από αίτημα σας στην εταιρεία.

Προώθηση και διανομή



BIANEX A.E. - Έδρα : Οδός Βαρυμύμης 8, 14671 Ν. Ερυθραία, Κηφισιά, Ταχ. Θυρίδα 52894, 146 10 Ν. Ερυθραία
Τηλ. : 210 8009111 • Fax: 210 8071573 • E-mail: mailbox@vianex.gr • WEBSITE: www.vianex.gr
ΘΕΣΣΑΛΟΝΙΚΗ: Ακαδημίου 113, 562 24 Εύσσμος Θεσσαλονίκης, Τηλ.: 2310 861683

ΑΡ. Γ.Ε.ΜΗ. 000274201000

Βοηθήστε να γίνουν τα φάρμακα πιο ασφαλή και Αναφέρετε ΟΛΕΣ τις ανεπιθύμητες ενέργειες για ΟΛΑ τα φάρμακα Συμπληρώνοντας την «ΚΙΤΡΙΝΗ ΚΑΡΤΑ»

Κάτοχος Άδειας Κυκλοφορίας / Τοπικός Αντιπρόσωπος

sanofi

Sanofi-Aventis Μονοπρόσωπη ΑΕΒΕ,
Λεωφ. Συγγρού 348, Κτήριο Α, 17674 Καλλιθέα,
Τηλ. 210 90 01 600, www.sanofi.gr
MedicalInformation.Greece@sanofi.com