

ADVANCED VALVE THERAPIES 2026

19-20 JUNE, 2026

EUGENIDES FOUNDATION

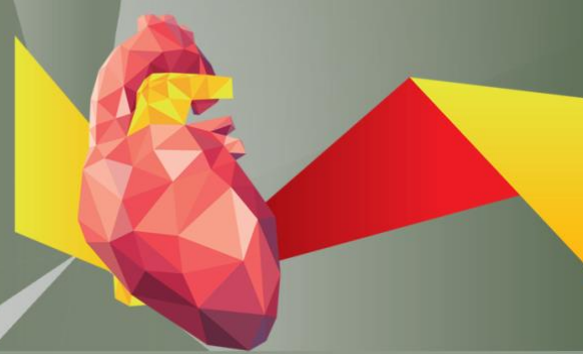
ATHENS / GREECE



ΟΡΓΑΝΩΣΗ / ΓΡΑΜΜΑΤΕΙΑ / ΠΛΗΡΟΦΟΡΙΕΣ

INVENTICS A.E. / [Medevents.gr](https://www.medevents.gr) / T. 2310 474 400 / E. info@medevents.gr / W. www.medevents.gr

Αρ. Ειδ. Σημ. Λειτουργίας ΕΟΤ: ΜΗΤΕ 0933Ε60000074600



SCIENTIFIC PROGRAM | FRIDAY 19 JUNE 2026

08.30-09.00 Registration - Welcome coffee

09.00-09.15 Welcome and Introduction

I. Iakovou, V. Voudris, F. Antoniou, G. Athanassopoulos

Opening Remarks

J. Boletis

09.15-09.45 Keynote Lectures in Valve Therapies

Moderators: **K. Tsioufis, I. Iakovou, D. Dvir**

Transcatheter Treatment of Structural Heart Disease - Year in Review

E. Mariano

Special Lecture: The Structural Odyssey continues:

The development of new technologies and methods

Ch. Lotan

09.45-10.30 SESSION I: HOT TOPICS IN TAVR: Younger Patients

Moderators: **D. Dvir, A. Finkelstein, K. Toutouzas**

Sponsored Live in-a-box case 1 (p. 22)

TAVR in younger patients-Lifetime considerations into spotlight,

Onassis Hospital

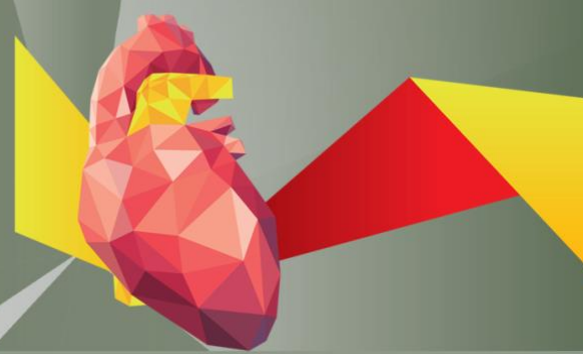
TAVR in younger patients

P. Patsalis

Should we slow down? We do have complications

A. Finkelstein

Panel: **A. Zacharoulis, K. Perreas, G. Samanidis**



SCIENTIFIC PROGRAM | FRIDAY 19 JUNE 2026

**10.30-11.10 Special Session: Making new therapies more accessible to patients.
Medical and Economic Considerations**

Moderators: **G. Filippatos, M. Efremidis, M. Balanika**

Introduction

I. Iakovou

Patients

N. Dedes

Industry

D. Nikas

Government

TBA

Panel: **G. Athanassopoulos, A. Massali**

11.10-11.15 Break

11.15-11.45 GENETICS IN HEART VALVE DISEASES: AMYLOIDOSIS AND BEYOND

Moderators: **A. Trikas, G. Filippatos**

Amyloidosis in heart valve patients: How to identify and how to treat

Ch. Vlachopoulos

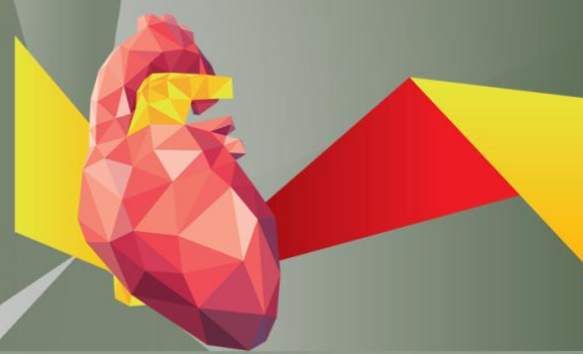
Case Presentation and Discussion

E. Girginoudi

Genetics In Heart Valve Diseases: What an interventionalist needs to know

A. Anastasakis

Panel: **D. Antonakaki, V. Vartela, G. Chatzigeorgiou**



SCIENTIFIC PROGRAM | FRIDAY 19 JUNE 2026

11.45-12.15 SESSION II: HOT TOPICS IN TAVR

Moderators: **A. Finkelstein, P. Dardas**

Sponsored Case 2 Live (p. 22)

Minimalistic TAVR, Onassis Hospital

Panel: **N. Mezilis, F. Kolokathis, St. Georgopoulos**

12.00-15.00 Parallel Sponsored Workshops (p.24)

12.15-13.00 SESSION III: HOT TOPICS IN TAVR - Challenging Anatomies

Moderators: **D. Dvir, K. Toutouzas**

Case 3 Live-in-a-box:

**TAVR in patient with anatomical challenges, Athens Naval Hospital
G. Katsimagklis**

TAVR in bicuspid Anatomy

K. Toutouzas

Live in-a-box case 4:

TAVR in a patient with Aortic regurgitation, Alexandroupoli University General Hospital

D. Tziakas, K. Lampropoulos

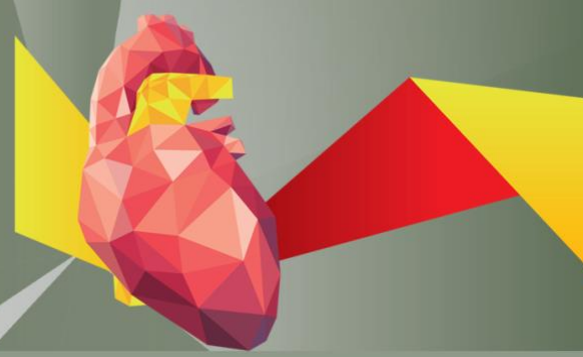
Panel: **K. Perreas, K. Lampropoulos,**

G. Pattakos, I. Ntarladimas

13.00-14.00 Satellite Symposium (p. 22)

14.00-14.15 Break

15.00-18.30 Parallel Training Session / Room B (p. 13-16)



SCIENTIFIC PROGRAM | FRIDAY 19 JUNE 2026

14.15-16.00 SESSION IV: HOT TOPICS IN TAVR

Moderators: **A. Finkelstein, V. Voudris, P. Patsalis, L. Michalis**

Alternative access TAVR

G. Georgiou

Live in-a-box case 5:

TAVR - Alternative access, University of Miami

N. Spiliadis

Case 6 Live:

TAVR - Alternative access, Onassis Hospital

Operators: **V. Voudris, E. Sbarouni, I. Kosmas, A. Falara, M. Balanika,**

S. Papageorgiou

SPECIAL LECTURE:

Leaflet modification techniques: State of the art

D. Dvir

Live in-a-box case 7:

TAVR in challenging bicuspid valve optimized by specialized software, Onassis Hospital

Presenter: **K. Perlepe, A. Makris**

Operators: **I. Iakovou, P. Georgiadou, I. Kosmas, K. Perlepe,**

F. Matsouka, St. Papageorgiou

TAVR optimization with AI

N. Spiliadis

Panel: **G. Katsimagklis, N. Spiliadis, P. Dardas, K. Stathogiannis**

16.00-17.00 Special Session: Things cardiologists need to know and cardiac surgeons to remember

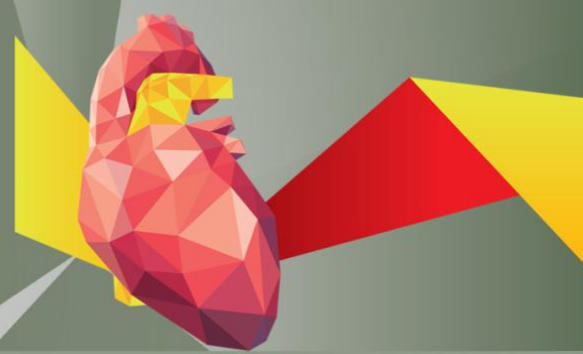
Moderators: **M. Argyriou, I. Iakovou**

How to deal (surgically) with failed TAVR

D. Avgerinos

Minimal invasive mitral valve repair

K. Perreas



SCIENTIFIC PROGRAM | FRIDAY 19 JUNE 2026

What if the mitral valve pathology is too extensive for minimally approach

G. Pattakos

Percutaneous procedures are not for all. Innovations in minimally invasive procedures provide durable and efficient treatment in the majority of patients!

A. Pitsis

Aortic valve repair. Indications and techniques.

G. Stavridis

Panel: **K. Kontrafouris, N. Kogerakis, S. Fragkoulis, F. Kolokathis,**

A. Chalapas, G. Zarogiannis

17.00-17.30 Sponsored Live-in-a-box case 8 (p. 22)

A new kid on the block

17.30-18.00 Keynote Lecture from the President of the ACC

Moderators: **I. Iakovou, K. Tsioufis, L. Michalis**

Structural Heart Disease in Greece: Current Status and Future Directions

L. Michalis

Optimal Current and Future Pharmacological Interventions in
Valvular Heart Disease

R. Mehran

18.00-18.15 Break

18.15-20.30 Friday's patient vignettes -The TAVR patient: Various hospitals

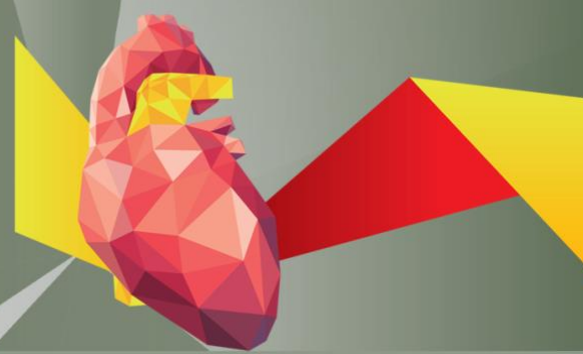
Moderators: **A. Manginas, P. Dardas**

Case Presentation 1 Onassis Hospital

K. Perlepe / A. Makris

Case Presentation 3 Hygeia Hospital

K. Katsianos



SCIENTIFIC PROGRAM | FRIDAY 19 JUNE 2026

Case Presentation 4 St. Luke's Hospital

N. Mezilis

Case Presentation 5 Onassis Hospital

D. Tsoukalas / I. Kosmas

Case Presentation 6 Mediterraneo Hospital

I. Kosmas

Case Presentation 7 Evangelismos Hospital

St. Georgopoulos

Case presentation 8 Henry Dunant Hospital Center

V. Tzifos

Case Presentation 9 Henry Dunant Hospital Center

N. Pilatis

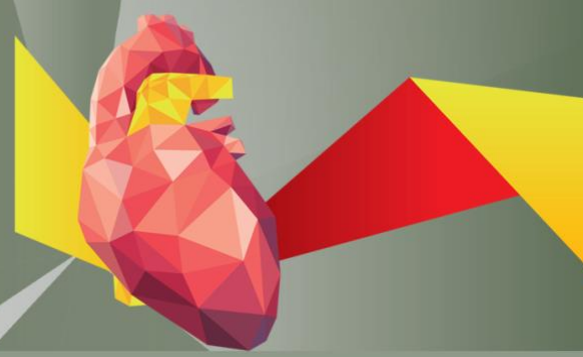
Case Presentation 10 Hygeia Hospital

I. Ntarladimas

Panel: **V. Tzifos, N. Kogerakis, A. Roussakis, K. Triantafyllou,**

I. Malakos, E. Bousoula, D. Antoniadis

20.30-21.00 Concluding Remarks of the day



SCIENTIFIC PROGRAM | SATURDAY 20 JUNE 2026

08.45-09.00 Welcome & Introduction

Moderators: **G. Dangas, I. Iakovou**

09.00-10.45 SESSION V: HOT TOPICS IN TRICUSPID VALVE INTERVENTIONS

Moderators: **G. Athanassopoulos, M. Shuvy, G. Dangas**

TR primer. Tricuspid valve how to quantify and when to treat

I. Ninios

Imaging for tricuspid interventions, guiding primer

M. Chrissoheris

TR TEER is here to stay: Tips and tricks for successful treatments

P. Patsalis

TTTVR, patient selection and future directions

K. Spargias

Keynote lecture 2

TAVI and severe CAD

G. Dangas

Live in-a-box case 9:

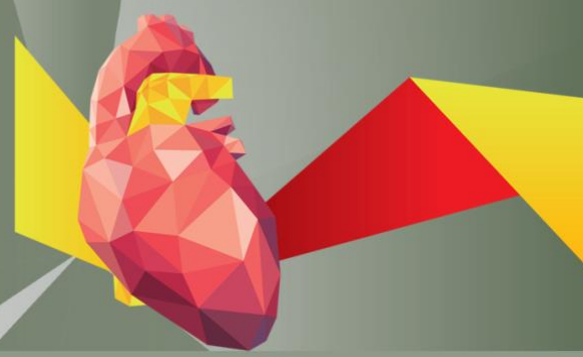
TEER in Tricuspid, European Interbalkan Medical Center

Operators: **V. Ninios**

Panel: **V. Ninios, I. Ninios, N. Koutsogiannis**

10.45-11.00 Break

12.00-15.00 **Parallel Sponsored Hands-on Workshops (p.24)**



SCIENTIFIC PROGRAM | SATURDAY 20 JUNE 2026

11.00-12.30 SESSION VI: HOT TOPICS IN MITRAL VALVE INTERVENTIONS II

Moderators: **P. Patsalis, M. Shuvy**

Patient selection for mitral valve interventions

V. Ninios

Tips and tricks for mitral transcatheter edge-to-edge repair: Anatomy and imaging

J. Grapsa

Live in-a-box case 10:

TEER in Mitral with anatomical challenges, Onassis Hospital

Presenter: **G. Zarogiannis**

Operators: **I. Iakovou, G. Zarogiannis, I. Kosmas, K. Perlepe, P. Ftikos**

MR TEER tips and tricks for yellow and red zone patients

M. Shuvy

Live in-a-box case 11:

TMVR in Mitral Ring, Onassis Hospital

Presenter: **M. Chatzitofi**

Operators: **I. Iakovou, G. Zarogiannis, I. Kosmas, K. Perlepe, P. Ftikos**

Panel: **V. Ninios, N. Koutsogiannis**

12.30-13.30 SESSION VII

Moderators: **G. Dangas, I. Iakovou, A. Mastrokostopoulos**

Sponsored Live in-a-box case 12 (p. 23)

TAVR and concomitant PCI in a patient with coronary considerations

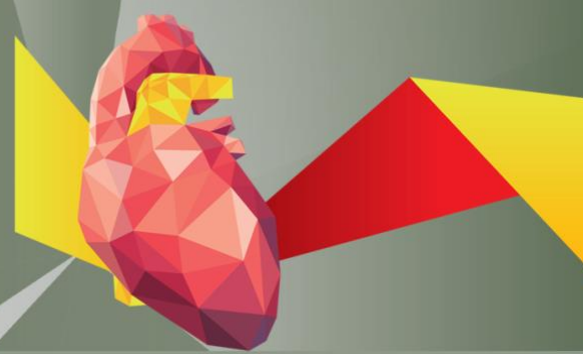
Sponsored Live in-a-box case 13 (p.23)

TAVR in a severely stenotic bioprosthetic valve

Satellite Lecture (p.23)

Panel: **G. Zarogiannis**

13.30-14.00 Break



SCIENTIFIC PROGRAM | SATURDAY 20 JUNE 2026

14.00-15.15 SESSION VIII: HOT TOPICS IN MITRAL VALVE INTERVENTIONS III

Moderators: **G. Dangas, Th. Kofidis**

Keynote lecture: How to better select optimal treatments for Mitral Valve Disease patients

F. Maisano

TMVR interventions primer. Tips and tricks

V. Ninios

Do we need to change the current guidelines for the echocardiographic assessment of secondary tricuspid regurgitation?

L. Badano

Live in-a-box case 14:

TMVR, Hygeia Hospital

K. Spargias

Panel: **I. Ninios, Z. Dimitriadis, G. Zarogiannis, M. Chatzitofi**

15.15-15.45 Live in-a-box case 15:

The truly forgotten valve. Percutaneous valve in pulmonary position, Onassis Hospital

Presenters: **M. Kantzis, P. Perlepe**

Operators: **M. Kantzis, G. Vagenakis, S. Apostolopoulou, P. Perlepe**

15.45-16.00 Break

16.00-17.45 SESSION IV: HOT TOPICS BEYOND VALVES

LAAO and Paravalvular leaks

Moderators: **D. Tsiapras, A. Tzikas**

Why do we need LAAO? Patient selection for LAAO

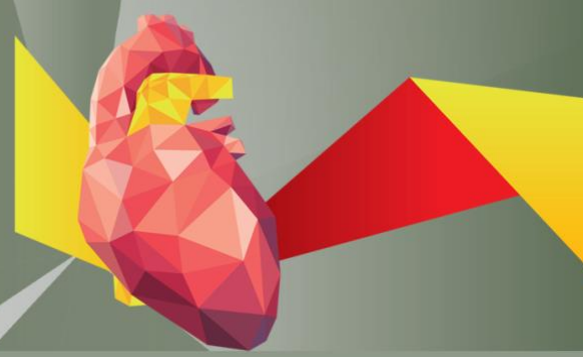
A. Tzikas

Live in-a-box case 16:

LAAO, Onassis Hospital

Operators: **I. Iakovou, G. Zarogiannis, K. Perlepe, M. Chatzitofi,**

D. Tsoukalas, I. Kosmas, I. Koziakas, A. Tzikas, S. Papageorgiou



SCIENTIFIC PROGRAM | SATURDAY 20 JUNE 2026

CT Imaging and anatomy in Structural Procedures. The role of Radiologist
Th. Vrachliotis

Paravalvular leaks: Patient selection and tips and tricks for optimal treatment
T. Kilic

Live in-a-box case 17:
Paravalvular leak closure
Operator: **T. Kilic**

Sponsored Live in-a-box case 18 (p. 23)
REDUCER, Onassis Hospital

Panel: **G. Vagenakis, G. Zarogiannis**

17.45-18.00 Break

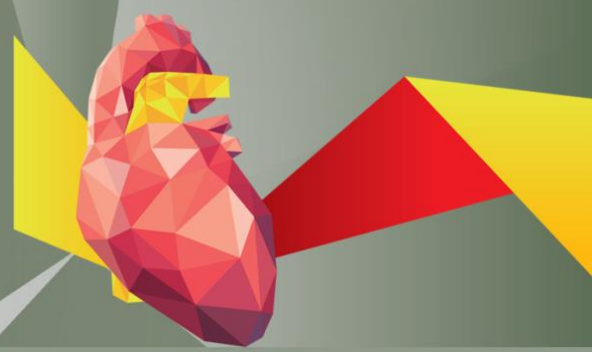
**18.00-20.00 Saturday's patient vignettes - The mitral and tricuspid patient,
LAO and paravalvular leaks**
Moderators: **I. Iakovou, G. Dangas**

Case Presentation 1 Sotiria Thoracic Diseases Hospital of Athens
K. Kalogeras

Case Presentation 2 Onassis Hospital
G. Zarogiannis

Case Presentation 3 St. Luke's Hospital
N. Mezilis

Case Presentation 4 European Interbalkan Medical Center
A. Tzikas



SCIENTIFIC PROGRAM | SATURDAY 20 JUNE 2026

Case Presentation 4 Athens Naval Hospital

A. Mastrokostopoulos

Case Presentation 5 General Hospital of Athens Korgialeneio - Benakeio Hellenic Red Cross

A. Tsangaris

Case Presentation 6 Onassis Hospital

M. Chatzitofi

Panel: **A. Chalapas, K. Triantafyllou, N. Spilias**

20.00-20.30 Closing remarks



Structural Heart Disease — Parallel Workshop Program

Cath Lab Nursing Focus

TITLE

The Nursing Team at the Centre

Parallel Workshop

15:00- 15:10 Welcome and Introduction

Chr. Panagiotou

15:10- 16:00 **LECTURES**

Moderator: **Chr. Panagiotou**

LECTURES

- 1 Current Evidence in Structural Heart Disease: From Guidelines to Emerging Therapies and New Technologies
Evang. Papadopoulou

- 2 Transcatheter Mitral and Tricuspid Valve Repair: Nursing Considerations in Clinical Practice
Sp. Linardos

- 3 ***When Intervention Becomes Surgery: Nursing Readiness and Decision-Making in the Hybrid Cardiac Catheterisation Laboratory***

- Conversion from intervention to emergency surgical management
- Crisis resource management
- Nursing preparedness and escalation pathways
- Time and role management in the hybrid operating suite
- **Simulation-based training Sp. Linardos, Ch. Krithari**

Discussion & Case-Based Session

Open discussion following lecture 3 · Audience-participation case scenarios



HANDS-ON WORKSHOPS

16:00- 16:15 Workshop 1 *Optimising the Access Route for Transcatheter Valve Delivery*

Shockwave Intravascular Lithotripsy for Vascular Access in Structural Heart Interventions

Clinical focus: management of calcified access vessels (femoral, iliac, subclavian arteries) to enable safe passage of large-bore delivery systems for transcatheter valve implantation (TAVI / TMVR).

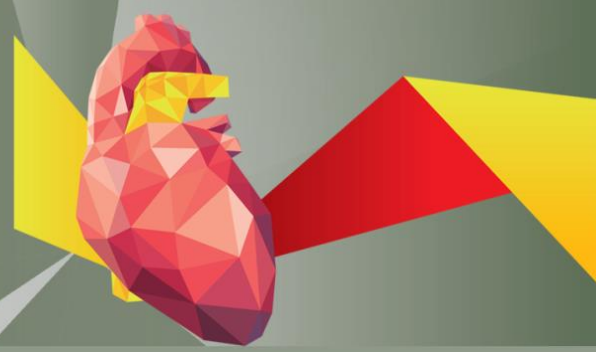
Key Learning Points

- Why vascular access matters in structural interventions: anatomical and procedural considerations
- Calcified access vessels: femoral, iliac, and subclavian artery challenges
- Basic principles of Shockwave IVL in peripheral / access vessels
- Patient selection and pre-procedural imaging assessment (CT angiography review)
- Equipment setup and delivery system preparation
- Procedural workflow: sequencing IVL within the structural intervention
- Nursing role: setup, monitoring, and communication with the operator
- Safety considerations and potential complications

Session Format

- Brief didactic introduction — the role of access preparation in TAVI / structural procedures
- Device demonstration — equipment and hands-on preparation
- Case-based discussion — real-world access challenges and IVL decision-making
- Q&A with faculty

Note: this workshop addresses Shockwave IVL specifically in the context of access vessel preparation for valve delivery — distinct from its use in coronary calcification management.



16:15 - 17:30 Workshop 2 *Impella & IABP: From Theory to Bedside* **A. Spyrou**
Mechanical Circulatory Support in Clinical Practice

Part A — Theoretical Introduction

- Indications
- Basic principles of operation
- Device selection
- Complications and troubleshooting

Part B — Hands-On Station

- System setup and priming
- Alarm management
- Nursing monitoring
- Case scenarios

2 simultaneous stations · Small participant groups recommended

17:30- 18:00 Workshop 3 *Valve Preparation & Deployment Simulation*

Loading the Valve

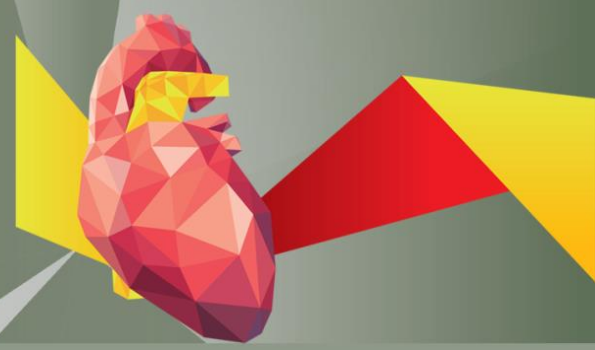
Training in valve preparation and understanding differences between balloon-expandable and self-expanding valves.

Station 1 — Balloon-expandable valve simulation

Station 2 — Self-expanding valve simulation

Key Learning Points

- Valve loading technique
- Sterility and preparation protocol
- Communication with the operator
- Technical pitfalls and how to avoid them
- Procedural workflow



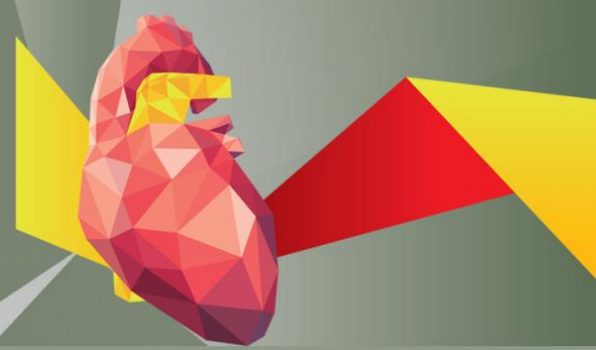
18:00 – 18:30 CLOSING SESSION

Moderator: **Ch. Panagiotou**

Panel Discussion: The Future of Structural Interventions and the Evolving Role of the Nursing Team

- How is the nursing team's role changing in hybrid operating suites?
- What competencies will be required in the years ahead?
- How can a structural heart programme be effectively organised?
- Is simulation-based training sufficient in the Greek healthcare setting?

Panel: **N. Koufakis, S. Nikolaidou, E. Stamatopoulou, M. Kalabaliki, S. Linardos, I. Chiotelis**



FACULTY LIST

A. Anastasakis / MD, PhD, Consultant Cardiologist, Scientific Director, Unit of Inherited and Rare Cardiovascular Diseases, Onassis Cardiac Surgery Center

D. Antonakaki / MD, MSc, Consultant Cardiologist in Inherited Cardiac Conditions, Sports Cardiology and CMR, Onassis Hospital, Senior Clinical Lecturer, St George's University of London, Comm Coordinator ESC Council of Cardiovascular Genomics
Nucleus member Sports Cardiology Section EAPC, Education Committee EAPC

D. Antoniadis / Director Cardiac Clinic, 401 General Army Hospital, Athens, Greece

F. Antoniou / Advisor of medical education, Onassis Hospital

S. Apostolopoulou / Pediatric Cardiologist, Director, Department of Pediatric Cardiology & Adult Congenital Heart Disease, Onassis Hospital, Athens, Greece

M. Argiriou / Cardiac Surgeon, Cardiothoracic Department, Evangelismos Hospital, Athens

G. Athanassopoulos / MD, FESC, f. Director Cardiology Section, Onassis Hospital, Adjunct Professor European University Cyprus, Visiting Professor Cardiology Belgrade University

D. Avgerinos / Cardiac and Aortic Surgeon, Onassis Hospital, Athens, Greece

L. Badano / MD, PhD, FESC, FACC Honorary Fellow ASE, BSE and EACVI, Professor of Cardiovascular Medicine, University of Milano-Bicocca, Director of the Integrated Cardiovascular Diagnosis Unit, Department of Cardiology, Istituto Auxologico Italiano, IRCCS, Milan, Italy

M. Balanika / Director Anesthesiologist, Department of Anesthesia, Onassis Hospital

J. Boletis / Emeritus Professor of Internal Medicine-Nephrology, Kapodistrian University of Athens, President, Board of Directors, Onassis Hospital

E. Bousoula / Interventional Cardiologist, Cardiology Department, Tzaneio Hospital of Piraeus, Athens Greece

K. Briedis / MSc, PhD, MHEM, Head of structural Heart Disease, Hospital of Lithuanian University of Health Sciences, Kaunas Clinic, Lithuania

A. Chalapas / Interventional Cardiologist, Interventional Cardiology and THV Department, Athens Medical Center, Greece

G. Chatzigeorgiou / Cardiologist, Onassis Hospital, Athens

M. Chatzitofi / Cardiologist, Onassis Hospital

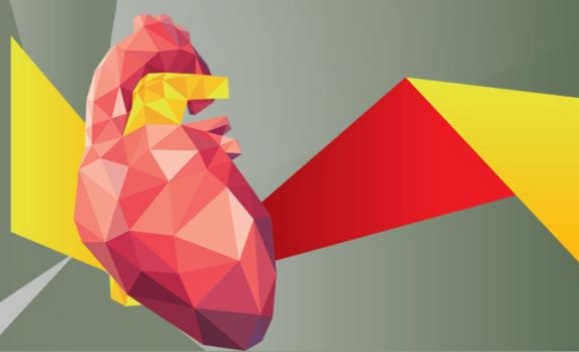
I. Chiotelis / RN, MSc, Head Nurse of Cath Lab, Asklipion Boulas Hospital

M. Chrissoheris / Cardiologist, Associate Director, Transcatheter Heart Valves Department, HYGEIA Hospital, Athens, Greece

G. Dangas / MACC, MSCAI, FESC, FAHA, Professor of Cardiology & Vascular Surgery, Icahn School of Medicine at Mount Sinai, New York, USA, Professor of Cardiology, Athens Medical School, Athens University, Greece

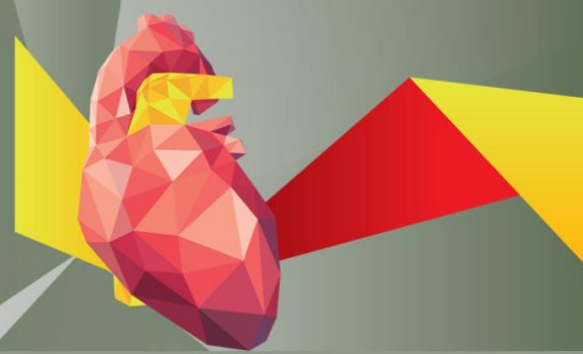
P. Dardas / MD, FESC, Interventional Cardiologist, Director, Cardiovascular Laboratory, St. Luke's Hospital, Thessaloniki, Greece

N. Dedes / General Secretary of the Greek Patients' Association, President of the Association of people living with HIV/AIDS "Positive Voice"



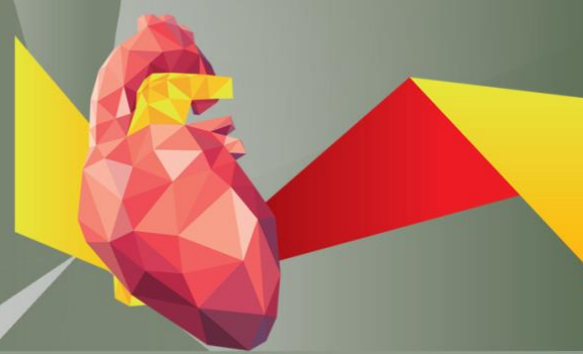
FACULTY LIST

- Z. Dimitriadis** / Interventional Cardiologist, Mediterranean Hospital of Cyprus
- D. Dvir** / M.D., Director of Interventional Cardiology and Cath Labs at Shaare Zedek Medical Center, Jerusalem, Israel
- M. Efremidis** / Cardiologist, Director, Dept of Electrophysiology and Pacemaking, Onassis Hospital, Athens, Greece
- A. Falara** / Cardiac Anesthesiologist, Onassis Hospital, Athens, Greece
- G. Filippatos** / Professor of Cardiology, National and Kapodistrian University of Athens, Chair, Department of Cardiology, Athens University Hospital Attikon, Greece
- A. Finkelstein** / MD, Tel Aviv Medical Center, Tel Aviv University Israel
- S. Fragoulis** / Cardiac Surgeon, Deputy Director, Onassis Hospital, Athens, Greece
- P. Ftikos** / Anesthesiologist, Onassis Hospital, Athens, Greece
- P. Georgiadou** / Consultant Cardiologist, Cardiology Department, Onassis Hospital, Athens, Greece
- G. Georgiou** / FESC, FACC, FSCAI, Interventional Cardiologist, Director of the cardiology department, Apollonio Hospital, Nicosia, Cyprus
- St. Georgopoulos** / Consultant Interventional Cardiologist, Cardiology Department, "Evangelismos" G.H., Athens, Greece
- E. Girginoudi** / Onassis Cardiac Surgery Center, Athens, Greece
- J. Grapsa** / Director for education in echocardiography, Brigham and Women's Hospital, Harvard Medical School
- I. Iakovou** / Interventional Cardiologist, Director, Hemodynamic Studies & Interventional Cardiology Department, Onassis Hospital, Athens, Greece
- M. Kalabaliki** / RN, MSc, Cath Lab, Attikon University Hospital
- K. Kalogeras** / Assistant Professor of Cardiology, 3rd Department of Cardiology, 'Sotiria' Hospital, Athens, Greece
- M. Kantzis** / Associate Director, Department of Congenital Heart Disease, Onassis Cardiac Surgery Center, Greece; Locum Consultant, East Midlands Congenital Heart Centre (EMCHC), University Hospitals of Leicester (UHL), United Kingdom
- V. Karagiorgos** / Anaesthesiologist, Onassis Cardiac Surgery Center, Athens, Greece
- K. Katsianos** / Dr. med. Interventional Cardiologist, Associate Director, Transcatheter Heart Valves Department, HYGEIA Hospital, Athens
- G. Katsimagklis** / Interventional Cardiologist, Director of 1st Cardiology Department & Cardiovascular Laboratory, Naval Hospital of Athens, Greece
- T. Kilic** / MD, FESC, Professor, Director Structural Heart Interventions, Kocaeli University School of Medicine, Dept of Cardiology, Turkey. Past president Turkish Working Group of Interventional Cardiology, Treasurer/Main Board member of Turkish Society of Cardiology.
- Th. Kofidis** / MD, PD(Ger), FRCS, FAHA, FAMS, FAATS, Director, International Heart Surgery Center Greece / HYGEIA, and 1st (A) Heart Surgery Department, HYGEIA Hospital, Athens, Greece, Professor, Dept of Surgery, SoM, National University of Singapore Professor, Dept of Surgery, SoM, National University of Singapore



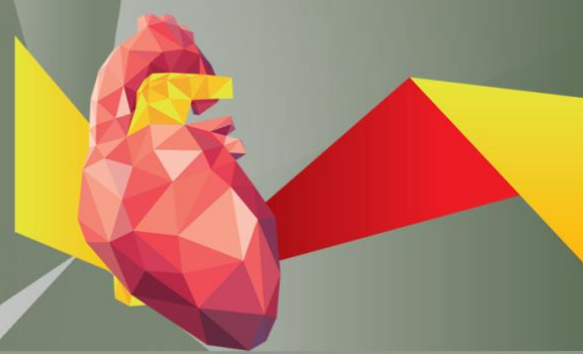
FACULTY LIST

- N. Kogerakis** / Deputy Director Cardiac Surgeon, 3rd Adult Cardiac Surgery Dept, Transplantation Mechanical Circulatory Support Service, Onassis Hospital, Athens, Greece
- F. Kolokathis** / Interventional Cardiologist Attikon University Hospital Athens, Greece
- K. Kontrafouris** / Cardiac Surgeon MD, Msc, PhD, Consultant, Onassis Hospital
- I. Kosmas** / Specialist Cardiologist, Research Coordinator, Cath Lab, Onassis Hospital, Athens, Greece
- N. Koufakis** / Director of Nursing Services, Lefkos Stavros
- N. Koutsogiannis** / Director Cardiological Clinic, University Hospital Rio, Patra, Greece
- I. Koziakas** / Anaesthesiologist, Onassis Hospital, Athens, Greece
- Ch. Krithari** / RN, MSc, Operating Room Nurse, Onassis Hospital
- K. Lampropoulos** / Ass. Professor of Cardiology, School of Medicine Democritus University of Thrace, Interventional Cardiologist, Athens, Greece
- Sp. Linardos** / RN, MSc, Head Nurse of Cath Lab, Onassis Hospital
- C. Lotan** / Chief Innovation Officer, Hadassah Medical Organization, Jerusalem Israel
- F. Maisano** / Professor in Cardiovascular Surgery, Director of Valve Center, San Raffaele Hospital, Milan, Italy
- A. Makris** / MD, Msc, PhD, Cardiology Resident, Onassis Hospital
- I. Malakos** / Consultant Cardiologist, Cardiology Department, Onassis Hospital
- A. Manginas** / MD, FESC, FACC, Cardiologist, Director, Dept of Cardiology and Interventional Cardiology, Mediterraneo GH, Athens, Greece
- E. Mariano** / Interventional Cardiologist, Fondazione Policlinico Tor Vergata, Rome, Italy
- A. Massali** / CAE at ASOFIN Management SA (Onassis Group)
- A. Mastrokostopoulos** / Interventional Cardiologist, Deputy Director Cath Lab, Athens Naval Hospital, Greece
- R. Mehran** / Professor of Cardiology and Population Health and Policy, Director of Interventional Cardiovascular Research and Clinical Trials, Icahn School of Medicine at The Mount Sinai Hospital, New York, USA
- N. Mezilis** / Interventional Cardiologist, St. Luke's Hospital, Thessaloniki, Greece
- L. Michalis** / Professor of Cardiology, University of Ioannina, Director, 2nd Cardiology Department, University General Hospital of Ioannina, President Union European Medical Specialists (UEMS) Cardiology Section, Chair Grouping 1 UEMS, President Elect HCS
- D. Nikas** / Managing Director, Medtronic Hellas
- St. Nikolaidou** / RN, MSc, Head Nurse of Cath Lab, Sismanoglio Hospital
- E. Nikoli** / Anesthesiologist, Onassis Hospital, Athens, Greece
- I. Ninios** / Interventional Cardiologist, Doctor of Cardiology of A.U.Th, European Interbalkan Medical Center, Thessaloniki, Greece
- V. Ninios** / Interventional Cardiologist, Director of Cardiology Department, European Interbalkan Medical Center, Thessaloniki, Greece
- I. Ntarladimas** / Interventional Cardiologist, HYGEIA Hospital, Athens, Greece
- Chr. Panagiotou** / MSc, PhD, FESC, FHFA, Director of Nursing Services, Onassis Hospital



FACULTY LIST

- E. Papadopoulou** / RN, MSc, PhD, Assistant Director 2nd Nursing Department, Onassis Hospital
- S. Papageorgiou** / Technician, Onassis Hospital
- P. Patsalis** / Assoc. Prof. Dr., Head of Cardiology, Angiology and Internal Emergency Medicine, Knappschaft Kliniken University Hospital, Ruhr University Bochum, Germany
International Instructor/Proctor in Structural Heart Disease, Valvular Interventions, and High-Risk PCI
- G. Pattakos** / Cardiac Surgeon, Director, 2nd Dept of Cardiac Surgery, Assistant Director, Transcatheter Heart Valves Department, HYGEIA Hospital, Athens, Greece, Associate Professor, University of Nicosia Medical School, Cyprus
- K. Perlepe** / MD, PhD, Interventional Cardiology Fellow, Onassis Hospital, Athens
- K. Perreas** / MD, PhD, FRCS C/Th, Cardiac Surgery, Director, 1st Dept of Cardiac Surgery, Onassis Hospital, Athens, Greece
- N. Pilatis** / Interventional Cardiologist, Henry Dunant Hospital Center, Athens, Greece
- A. Pitsis** / MD, PhD, FETCS, FESC, Cardiac Surgeon, Director of the 1st Department of Cardiac Surgery, European Interbalkan Medical Center, Thessaloniki, Greece
- A. Roussakis** / MD, MSc, PhD, Consultant Cardiac Surgeon, Onassis Hospital
- G. Samanidis** / Consultant Cardiac Surgeon, 1st Department of Cardiac Surgery, Onassis
- E. Sbarouni** / Interventional Cardiologist, Onassis Hospital, Athens, Greece
- M. Shuvy** / The Soroka Medical center, Beer-Sheva, Israel
- A. Smyrli** / Consultant Anesthesiologist, Heart Lung Transplantation Unit, Onassis Hospital, Athens, Greece
- K. Spargias** / MD, PhD, FESC, Interventional Cardiologist, Director, Transcatheter Heart Valves Department, HYGEIA Hospital, Athens, Greece
- N. Spilias** / Assistant Professor, Interventional Cardiology, Program Director, Structural Heart Disease Fellowship, University of Miami Miller School of Medicine, USA
- A. Spirou** / RN, MSc, PhD, ICU, Onassis Hospital
- E. Stamatopoulou** / RN, MSc, Deputy Head Nurse of Cath Lab, Attikon University Hospital
- K. Stathogiannis** / Interventional Cardiologist, Transcatheter Heart Valves Department, HYGEIA Hospital, Athens, Greece
- G. Stavridis** / Cardiac Surgeon, Chief of 3d Cardiac Surgery Dept, Onassis Hospital, Athens, Greece
- K. Toutouzas** / Professor of Cardiology, Athens University, 1st University Cardiology Department, Hippokration General Hospital, Athens, Greece, Director of Structural Heart Disease and Valve Disease Unit, HCS President
- K. Triantafyllou** / Consultant Interventional Cardiologist, G.H. "Evangelismos", Athens, Greece
- A. Trikas** / Cardiologist, PhD, Coordinator Director, Cardiology Clinic, "Evangelismos" GH, Athens, Associate Professor of Medical School University of Athens, Greece
- A. Tsangaris** / General Hospital of Athens Korgialeneio - Benakeio Hellenic Red Cross
- D. Tsiapras** / Consultant Cardiologist, Non-Invasive Cardiology Specialist, Cardiology Department, Onassis Hospital, Athens



FACULTY LIST

K. Tsioufis / MD, FESC, FACC, Professor of Cardiology, Director of 1st Cardiology Dept, University of Athens, Hippokration General Hospital, Athens, Vice Dean of the School of Medicine, University of Athens, Greece

D. Tsoukalas / Cardiologist, Onassis Hospital, Athens, Greece

D. Tziakas / FESC, FACC, FSCAI, Professor in Cardiology Democritus University Of Thrace, Head of Cardiology Dept. and Cardiac Catheterization Lab, UGH of Alexanroupolis, Greece

V. Tzifos / MD, PhD, Interventional Cardiologist, Director, Interventional Cardiology Department, Head of Cath Lab, Henry Dunant Hospital Center, Athens

A. Tzikas / MD, PhD, FESC, Interventional Cardiologist, Structural & Congenital Heart Disease, Hippokratio University Hospital of Thessaloniki & European Interbalkan Medical Center, Thessaloniki, Greece

G. Vagenakis / Cardiologist, Department of Congenital Heart Diseases, Onassis Hospital, Athens

V. Vartela / Cardiologist, Curator A, Cardiac Intensive Care Unit, "Onassis" Hospital, Athens, Greece

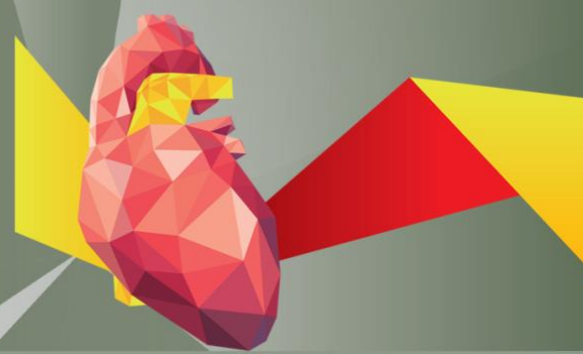
Ch. Vlachopoulos / Professor of Cardiology, Medical School, University of Athens

V. Voudris / Consultant Interventional Cardiologist, Cardiology Department, Onassis Hospital, Athens, Greece

Th. Vrachliotis / Radiologist, Director of Medical Imaging, Onassis Cardiac Hospital, Athens, Greece

A. Zacharoulis / Interventional Cardiologist, "EVANGELISMOS " General Hospital, Athens, Greece

G. Zarogiannis / MD PhD - Interventional Cardiologist, Onassis Hospital



SPONSORED LIVE IN-A-BOX CASES & LECTURES

Friday, June 19, 2026

09.45-10.30 Live in-a-box case 1 sponsored by **Edwards**

TAVR in younger patients-Lifetime considerations into spotlight,
Onassis Hospital

Presenter: **K. Perlepe**

Operators: **I. Iakovou, P. Georgiadou, I. Kosmas, K. Perlepe,
A. Smyrli, E. Nikoli, S. Papageorgiou**

11.45-12.15 SESSION II: HOT TOPICS IN TAVR

Case 2 Live sponsored by **Medtronic**

Minimalistic TAVR, Onassis Hospital

Presenter: **I. Kosmas**

Operators: **I. Iakovou, P. Georgiadou, I. Kosmas, K. Perlepe,
A. Smyrli, V. Karagiorgos, S. Papageorgiou**

13.00-14.00 Satellite Symposium sponsored by **Medtronic**

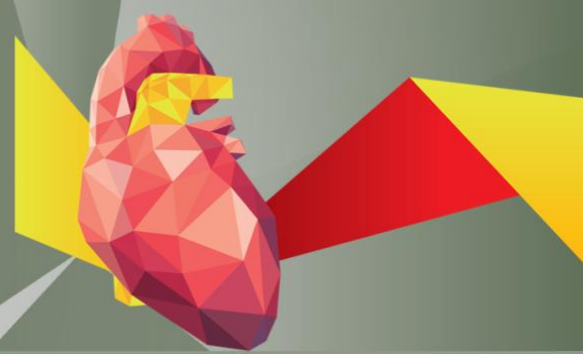
Moderator: **I. Iakovou**

The Future of TAVI: Contemporary Practice and Evolut Platform Data
D. Dvir

17.00-17.30 Live-in-a-box case 8 sponsored by **Zerono**

A new kid on the block

D. Antoniadis



SPONSORED LIVE IN-A-BOX CASES & LECTURES

Saturday, June 20, 2026

12.30-13.30 SESSION VII

Live in-a-box case 12 sponsored by **Meril Life Sciences**

TAVR and concomitant PCI in a patient with coronary considerations,
Onassis Hospital

Presenter: **K. Perlepe, P. Georgiadou**

Operators: **I. Iakovou, P. Georgiadou, I. Kosmas, K. Perlepe,
A. Smyrli, E. Nikoli, S. Papageorgiou**

Live in-a-box case 13 sponsored by **Cardio Innovation**

TAVR in a severely stenotic bioprosthetic valve, Onassis Hospital

Presenter: **K. Perlepe**

Operators: **I. Iakovou, P. Georgiadou, I. Kosmas, K. Perlepe,
A. Smyrli, E. Nikoli, S. Papageorgiou**

Satellite Lecture sponsored by **Cardio Innovation**

Allegra- From 1st case to clinical excellence

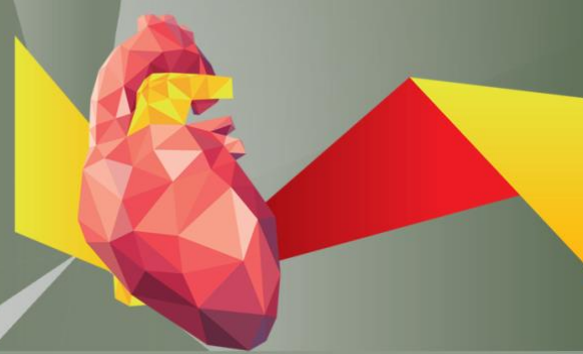
K. Briedis

17.05-17.20 Live in-a-box case 18 sponsored by **Sofmedica**

REDUCER, Onassis Hospital

Presenter: **K. Perlepe**

Operators: **I. Iakovou, G. Zarogiannis, K. Perlepe, M. Chatzitofi,
D. Tsoukalas, I. Kosmas, I. Koziakas, S. Papageorgiou**



SPONSORED WORKSHOPS

@1st- floor peristyle

12.00-15.00 Parallel Hands-on workshops sponsored by **Medtronic**

Friday 19 & Saturday 20 June, 2026

TAVI Symbionix simulator workshop

Evolut transcatheter aortic valve system hands-on station

@1st- floor peristyle

12.00-15.00 Parallel Hands-on workshops by **Edwards & Abbott**

Saturday 20 June, 2026

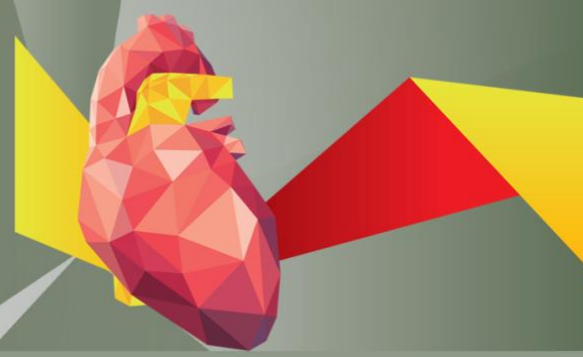
How to optimize Guiding during structural interventions

Theoretical Introduction

- Basic TOE Views
- What is important to know pre- Interventional
- Case-based Training/Examples of Guiding

Hands- On Station

- Introducing the TEER Systems (Clip, Pascal)



ACKNOWLEDGEMENTS

GOLD SPONSOR

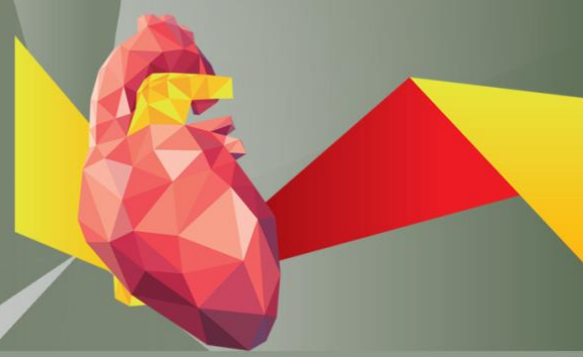
Medtronic

SILVER SPONSOR

Meril

BRONZE SPONSOR

ABBOTT



ACKNOWLEDGEMENTS

SPONSORS



Edwards™



Proven to perform

SMART Trial

3-year results

Evolut™ TAVI maintains superior valve performance[†] vs. SAPIEN™* TAVI in small annulus patients.^{‡,1}



[†] Valve performance as defined as freedom from bioprosthetic valve dysfunction (BVD) through 36 months. BVD is defined as a composite including any of the following: hemodynamic structural valve dysfunction (mean gradient ≥ 20 mmHg), non-structural valve dysfunction (severe prosthesis-patient mismatch or \geq moderate aortic regurgitation), clinical thrombosis, endocarditis, and aortic valve reintervention.

[‡] In patients with small annuli (area ≤ 430 mm²) in all-comers trial, consisting of majority low surgical risk participants (52.1%).

1. Herrmann H. Three-Year Outcomes of the SMART Trial. Presented at EuroPCR; Paris, France, May 20, 2026.

This material should not be considered the exclusive source of information, it does not replace or supersede information contained in the device manual(s). Please note that the intended use of a product may vary depending on geographical approvals. See the device manual(s) for detailed information regarding the intended use, the (implant) procedure, indications, contraindications, warnings, precautions, and potential adverse events. For aMRI compatible device(s), consult the MRI information in the device manual(s) before performing aMRI. If a device is eligible for eFU usage, instructions for use can be found at Medtronic's website manuals.medtronic.com. Manuals can be viewed using a current version of any major internet browser. For best results, use Adobe Acrobat® Reader with the browser. Medtronic products placed on European markets comply with EU and UK legislation (if applicable) on medical devices. For any further information, contact your local Medtronic representative and/or consult Medtronic's websites. Medtronic medical devices in compliance with the Spanish legislation in force.

Presented at EuroPCR 2025

LANDMARK

Randomised Controlled Trial

768
PATIENTS

31
CLINICAL SITES

16
COUNTRIES

1 year results

Myval THV series at **one year** was **non-inferior** to the contemporary THVs (Sapien and Evolut THV series) with respect to the clinical efficacy endpoint.

13.0 %

**Myval
THV series**

vs.

13.1 %

**Sapien and Evolut
THV series**

(Difference: -0.1%, one-sided 95% CI: 3.9%, $P_{\text{non-inferiority}} < 0.0001$)

Key findings

For the treatment of patients with symptomatic severe native aortic stenosis, the **Myval THV series** at **one year** was **non-inferior** to the contemporary THVs (Sapien and Evolut) with respect to the clinical efficacy endpoint. (Difference: -0.1%, one-sided 95% CI: 3.9%, $P_{\text{non-inferiority}} < 0.0001$).

LANDMARK is the the **first randomized TAVI head-to-head trial** to report the **VARC-3** recommended composite endpoint of clinical efficacy combined with QOL at one year. (19.5% vs. 22.7%, difference: -3.2%, 95% CI: -9.2 to 2.9, $P = 0.33$).

The hemodynamic results (93% echo assessment) provide robust conclusions on the **stable hemodynamic performance** of the two arms over a year. (EOA, mean PG and presence of \geq moderate aortic regurgitation were comparable).

Myval THV series demonstrates comparable survival (92.8% vs. 92.9%) to contemporary THV series, underscoring its overall safety.

As presented by Prof. Serruys at the Hotline TAVI 1 session, EuroPCR 2025



CONTROL MEETS EFFICIENCY

MitraClip™
Transcatheter Edge-to-Edge Repair



TriClip™
Transcatheter Edge-to-Edge Repair

G5 THE NEXT GENERATION OF TRANSCATHETER EDGE-TO-EDGE REPAIR SYSTEMS

CAUTION: Product(s) intended for use by or under the direction of a physician. Prior to use, reference the Instructions for Use, inside the product carton (when available) or at <https://www.eifu.abbott/> for more detailed information on Indications, Contraindications, Warnings, Precautions and Adverse Events. Information contained herein for DISTRIBUTION in Greece and Cyprus ONLY. Always check the regulatory status of the device in your region. Illustrations are artist's representations only and should not be considered as engineering drawings or photographs.

MitraClip™ G5 System and TriClip™ G5 System. CE marked medical devices. CE 2797.
Legal manufacturer: Abbott Medical, 177 County Road B East, St. Paul, Minnesota 55117, USA.

ABBOTT MEDICAL HELLAS LTD, Iroos Matsi & Archaeou Theatrou 17456, Alimos

™ Indicates a trademark of the Abbott group of companies. www.my-connect.com
©2025 Abbott. All rights reserved. 9-GR-2-16736-01 10-2025

Vyndaqel[®]

(*tafamidis*)



Πριν τη συνταγογράφηση συμβουλευθείτε την Περίληψη Χαρακτηριστικών του Προϊόντος που διατίθεται από την εταιρεία.

▼ Το φάρμακο αυτό τελεί υπό συμπληρωματική παρακολούθηση. Αυτό θα επιτρέψει το γρήγορο προσδιορισμό νέων πληροφοριών ασφάλειας. Ζητείται από τους επαγγελματίες υγείας να αναφέρουν οποιοσδήποτε πιθανολογούμενες ανεπιθύμητες ενέργειες. Βλ. παράγραφο 4.8 της Περιλήψης Χαρακτηριστικών του Προϊόντος για τον τρόπο αναφοράς ανεπιθύμητων ενεργειών.

Βοηθήστε να γίνουν τα φάρμακα πιο ασφαλή και
Αναφέρετε
ΟΛΕΣ τις ανεπιθύμητες ενέργειες για
ΟΛΑ τα φάρμακα
Συμπληρώνοντας την «ΚΙΤΡΙΝΗ ΚΑΡΤΑ»

