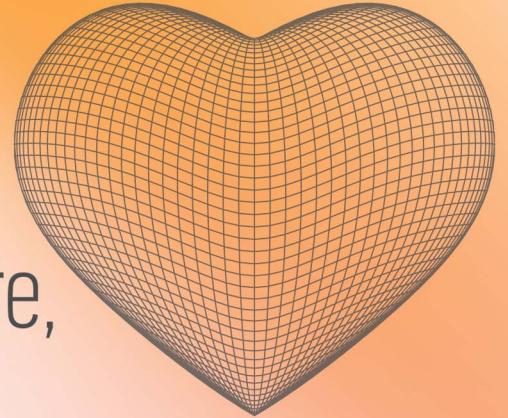
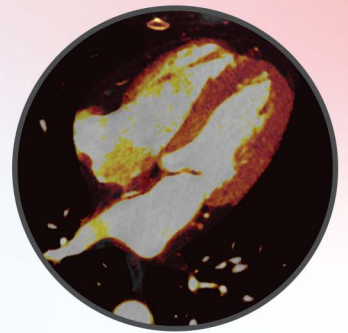
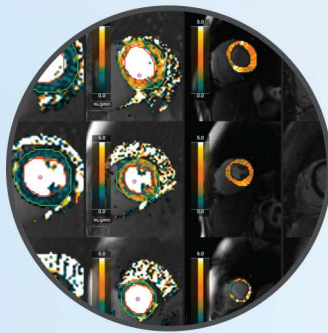
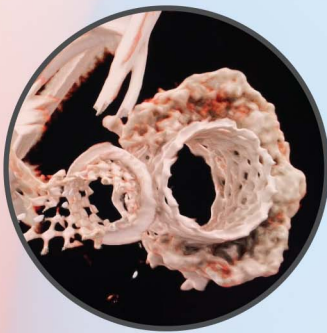
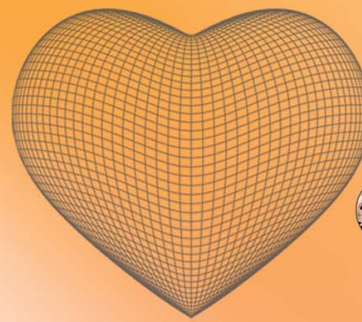


Cutting Edge Advanced Cardiovascular Imaging: The Heart Unveiled - Structure, Function & Beyond...



25-26 September, 2026
Monasty Hotel / **Thessaloniki**





Friday 25 September 2026

08.30 - 09.00 Registrations

09.00 - 09.30 Welcome – Opening

09.30 - 12.00 1st SESSION

Imaging in Structural Heart disease: Understanding the Guidelines - Key Insights

Cardiac CT for TAVI planning: optimal protocols and measurements

Cardiac CT for TAVI in Valve and TAVI in TAVI procedures

CT planning for TMVR

Cardiac MRI: All in one?

Role of Cardiac CT and Cardiac MRI in tricuspid regurgitation

Discussion

12.00 - 12.15 Break

12.15 - 14.00 2nd SESSION

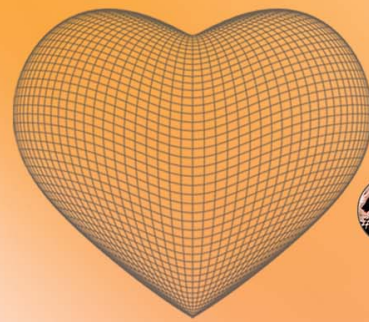
Photon Counting CT prior to structural interventions: Precision is in the details

Use of 4D Flow among Congenital Heart Disease patients

Cardiac CT and MRI for repaired complex Congenital Heart Disease

Interventional procedures in repaired Congenital Heart Disease

Discussion



Friday 25 September 2026

14.00 - 14.30 Break

14.30 - 16.30 3rd SESSION

Revisiting Aortic regurgitation in 2026: Time for Guideline change!

Scanning Pacemaker/ICD (CIED) patients from cardiac and non-cardiac MR aspects

Nightmares and Solutions: Managing challenging cases in Structural Heart

Dual Energy & Photon Counting CT Cardiovascular Imaging: Principles and applications

Discussion

16.30 - 17.00 Break

17.00 – 19.30 4th SESSION

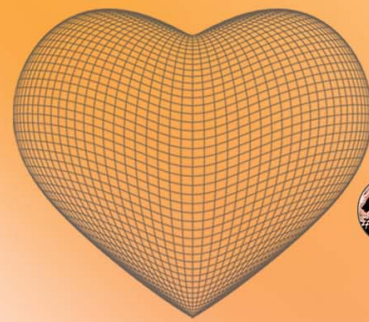
Stress CT perfusion and Stress CMR perfusion beyond CAD

Case presentations

Seeing beyond the Visible: AI, Medical Imaging and the next Era of Intelligence

Discussion

19.30 - 20.00 1st day Closing remarks



Saturday 26 September 2026

09.30 - 11.30 5th SESSION

Double trouble: Evaluating Cardiac Amyloidosis in the TAVI Era

Multimodality Imaging assessment in Multi Valvular Disease

Endocarditis Multimodality Imaging

Structural Heart Complications: When CT and MRI Clear the Fog

Discussion

11.30 – 12.00 Break

12.00 – 13.30 6th SESSION

Quantitative Stress perfusion CMR

Stress Cardiac CT perfusion: The One Stop-Shop?

Coronary CTA Integration for Strategy Improvement and Optimization of PCI
in Chronic Coronary Syndrome - "PRECISION – CT" Study

Discussion

13.30 - 16.30 Case presentations

16.30 – 17.00 Closing remarks